

---

91276

---

Client:

LumCAT: /

Luminaire: /

Report No:

Test No:

LampCAT: 91276

Lamp flux(lm): -1.0

Number of Lamps: 2

Length(mm): 1200

Phm Type: C

Voltage(V):

Current(A):

Power (W): 24.0000

PF:

Ballast type:

Width(mm): 270

Height(mm): 100

---

### Photometric Results

---

Lumens(lm): 2912.59

Efficiency(%): 0.00%

Lumens(lm)/Power(W): 121.36

Central intensity(cd): 871.129

Maximum intensity(cd): 871.129

Angle of maximum intensity: C=0.0  $\gamma$ =0.0

Beam Angle(50%Imax): [C0/180]Total=133.0

[C90/270]Total=111.4

Field angle(10%Imax): [C0/180]Total=170.8

[C90/270]Total=166.8

Maximum s/h(1/2): C0\_180=1.32 C90\_270=1.25

Maximum s/h(1/4): C0\_180=1.51 C90\_270=1.38

Up flux rate of lamp(%): 0.00%

Down flux rate of lamp(%): 0.00%

Up flux rate of LUM(%): 1.77%

Down flux rate of LUM(%): 98.23%

CIE Type : Direct lighting

Output flux ratio in  $\pi$  solid angle : 71.195%

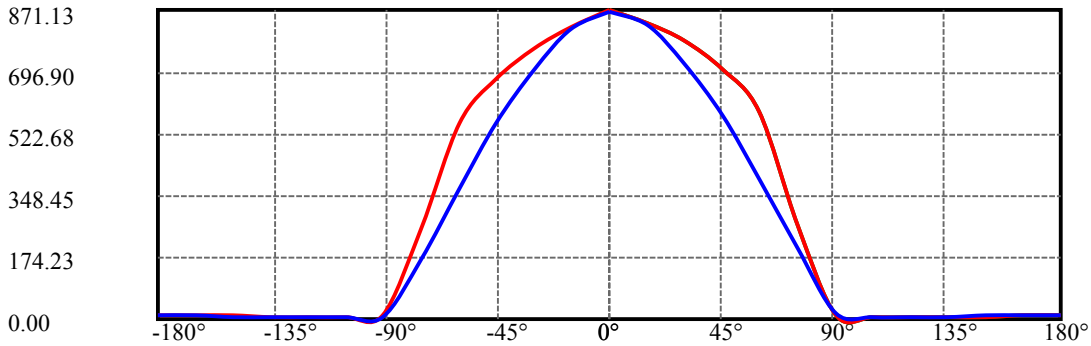
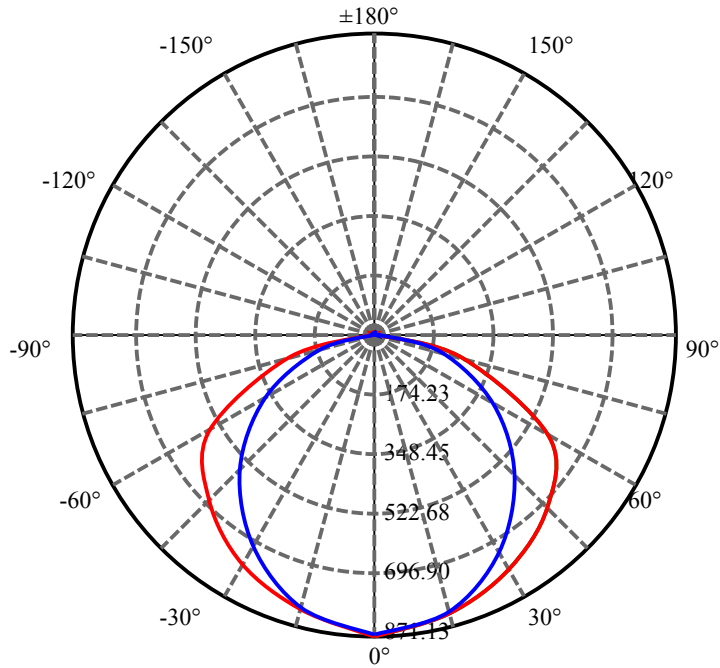
$\gamma(^{\circ})$	Average I(cd)	Zonal F(lm)	Sum F(lm)	Eff Flux(%)	Eff Sum(%)
0.0	869.021	0.000	0	.000%	.000%
15.0	824.743	181.313	181.313	.000%	6.225%
30.0	737.115	490.184	671.496	.000%	23.055%
45.0	626.767	680.928	1352.425	.000%	46.434%
60.0	481.681	721.206	2073.631	.000%	71.195%
75.0	261.960	563.451	2637.082	.000%	90.541%
90.0	13.327	223.838	2860.92	.000%	98.226%
105.0	7.176	16.672	2877.591	.000%	98.798%
120.0	6.923	10.683	2888.274	.000%	99.165%
135.0	7.434	9.341	2897.616	.000%	99.486%
150.0	8.150	7.780	2905.396	.000%	99.753%
165.0	8.740	5.301	2910.696	.000%	99.935%
180.0	8.952	1.894	2912.59	.000%	100.000%

## ZONAL LUMEN SUMMARY

Zone	Lumens	%Lamp	%Fixt
0-30	671.50	N.A.	23.05%
0-40	671.50	N.A.	23.05%
0-60	2073.63	N.A.	71.20%
0-90	2860.92	N.A.	98.23%
0-120	2888.27	N.A.	99.17%
0-180	2912.59	N.A.	100.00%
60-90	1508.50	N.A.	51.79%
90-120	251.19	N.A.	8.62%
90-130	251.19	N.A.	8.62%
90-150	268.31	N.A.	9.21%
90-180	273.61	N.A.	9.39%
0-66.83	2330.07	N.A.	80.00%

## ZONAL LUMEN SUMMARY

0-10	0.00
10-20	181.31
20-30	490.18
30-40	0.00
40-50	680.93
50-60	721.21
60-70	0.00
70-80	563.45
80-90	223.84
90-100	0.00
100-110	16.67
110-120	10.68
120-130	0.00
130-140	9.34
140-150	7.78
150-160	0.00
160-170	5.30
170-180	0.00



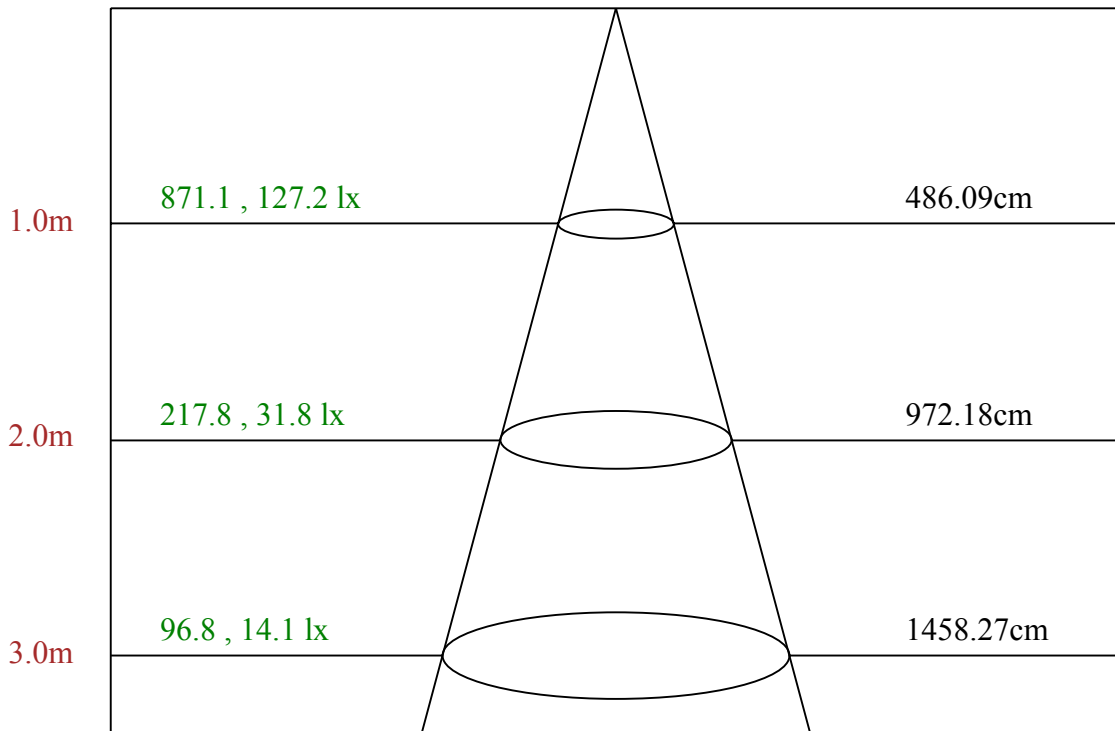
C0(Max): ———

C0/C180: ———

C90/C270: ———

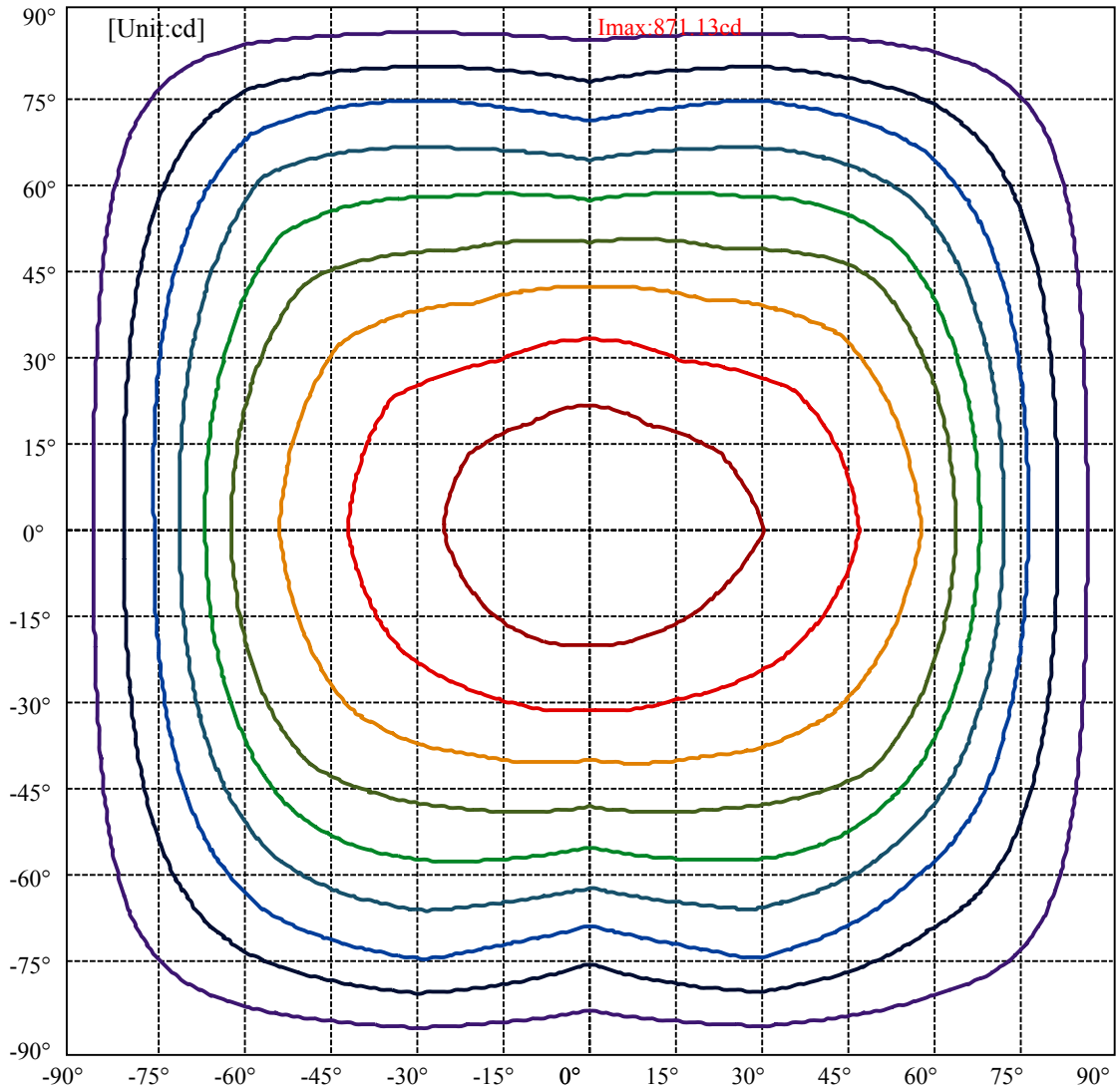
Field angle(10%Imax):C0/180Left:85.3 Right:85.5  
:C90/270Left:82.6 Right:84.2

Beam Angle(50%Imax):C0/180Left:66.0 Right:67.0  
:C90/270Left:54.6 Right:56.8

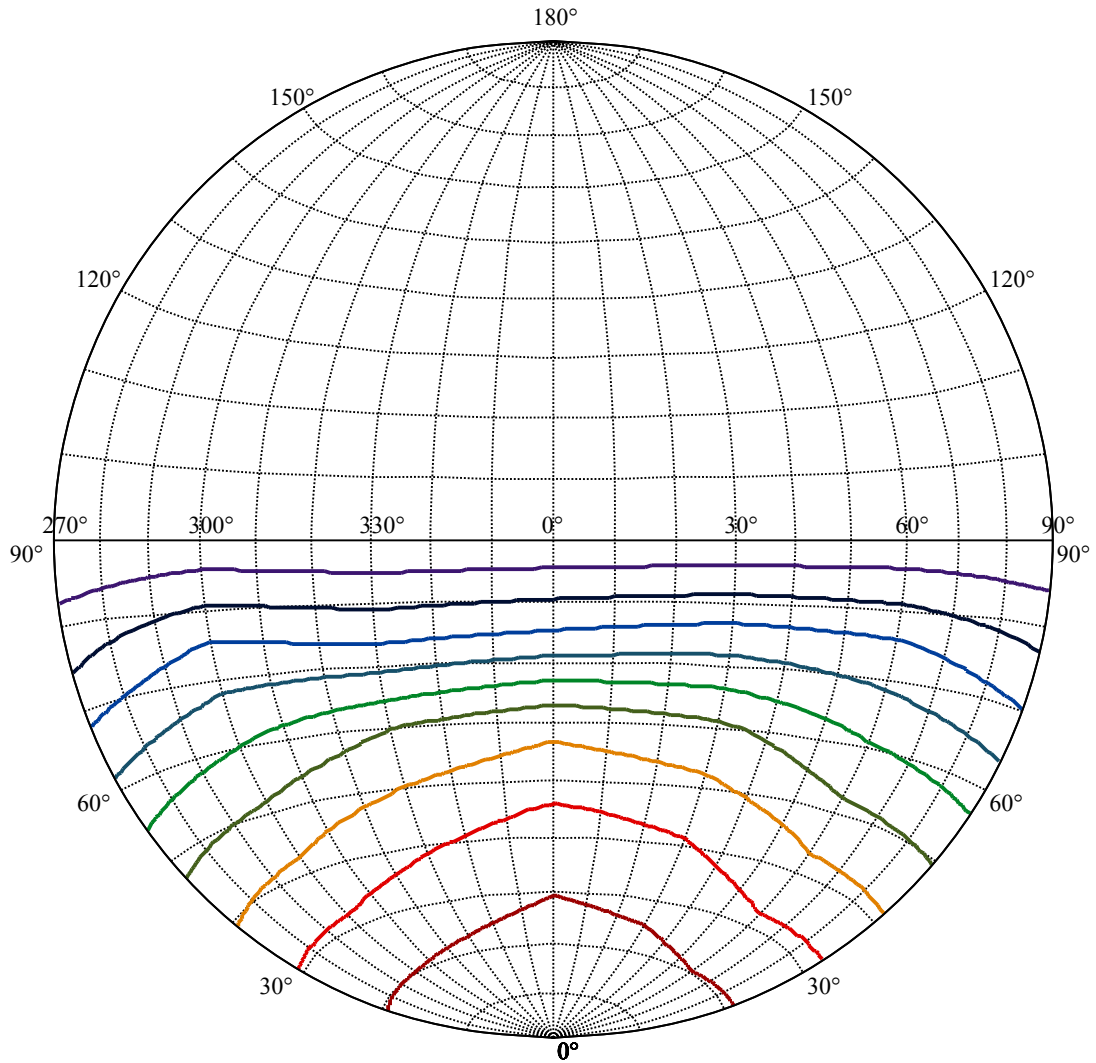


Max , Ave

Beam angle of C0 plane 135.27



(10%I <sub>max</sub> ) 86.8691	—
(20%I <sub>max</sub> ) 173.738	—
(30%I <sub>max</sub> ) 260.607	—
(40%I <sub>max</sub> ) 347.476	—
(50%I <sub>max</sub> ) 434.345	—
(60%I <sub>max</sub> ) 521.214	—
(70%I <sub>max</sub> ) 608.083	—
(80%I <sub>max</sub> ) 694.953	—
(90%I <sub>max</sub> ) 781.822	—



House

[Unit:cd]

Road

I<sub>max</sub>:871.13

(10%I<sub>max</sub>) 87.1129

(20%I<sub>max</sub>) 174.226

(30%I<sub>max</sub>) 261.339

(40%I<sub>max</sub>) 348.452

(50%I<sub>max</sub>) 435.565

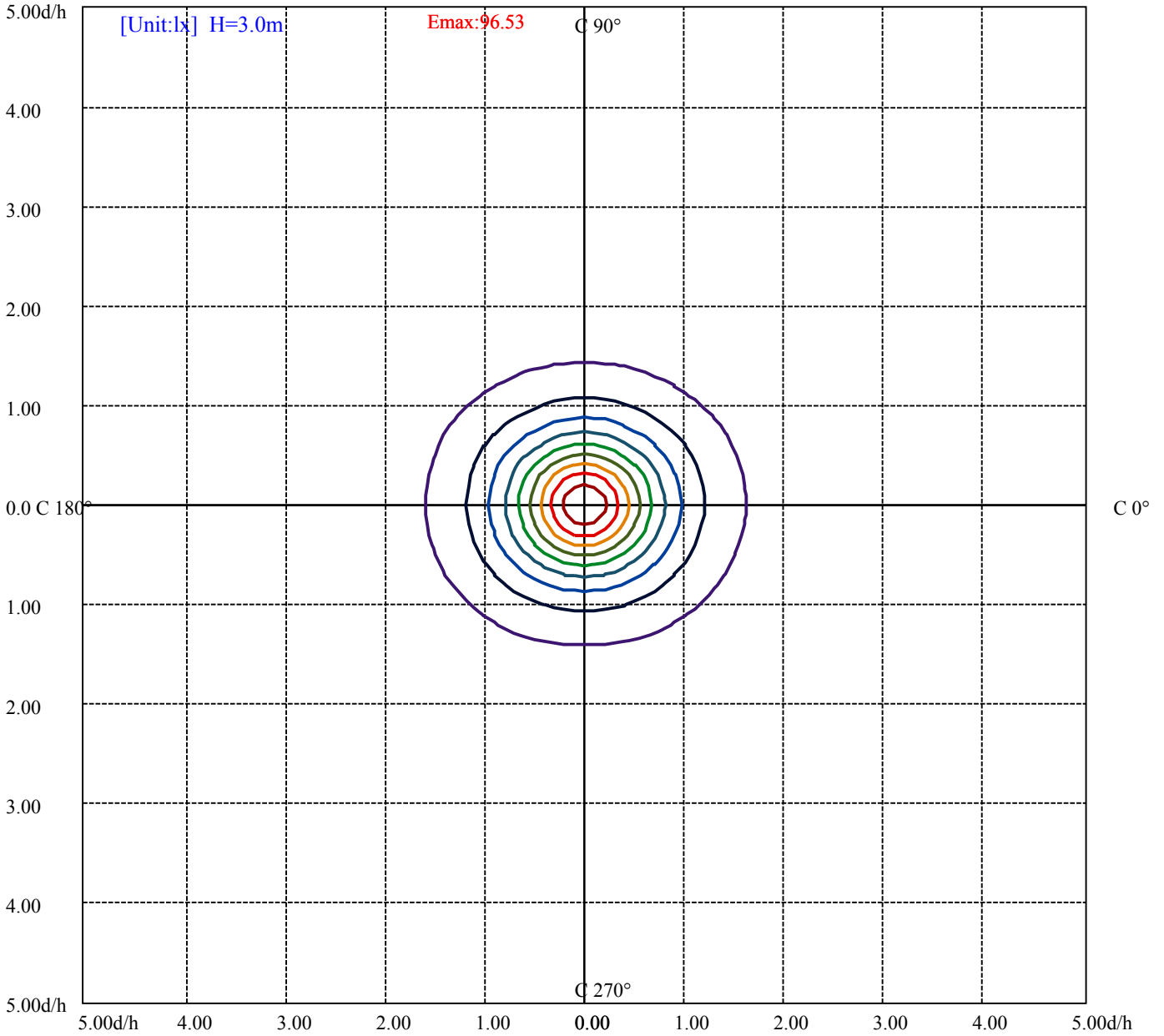
(60%I<sub>max</sub>) 522.677

(70%I<sub>max</sub>) 609.79

(80%I<sub>max</sub>) 696.903

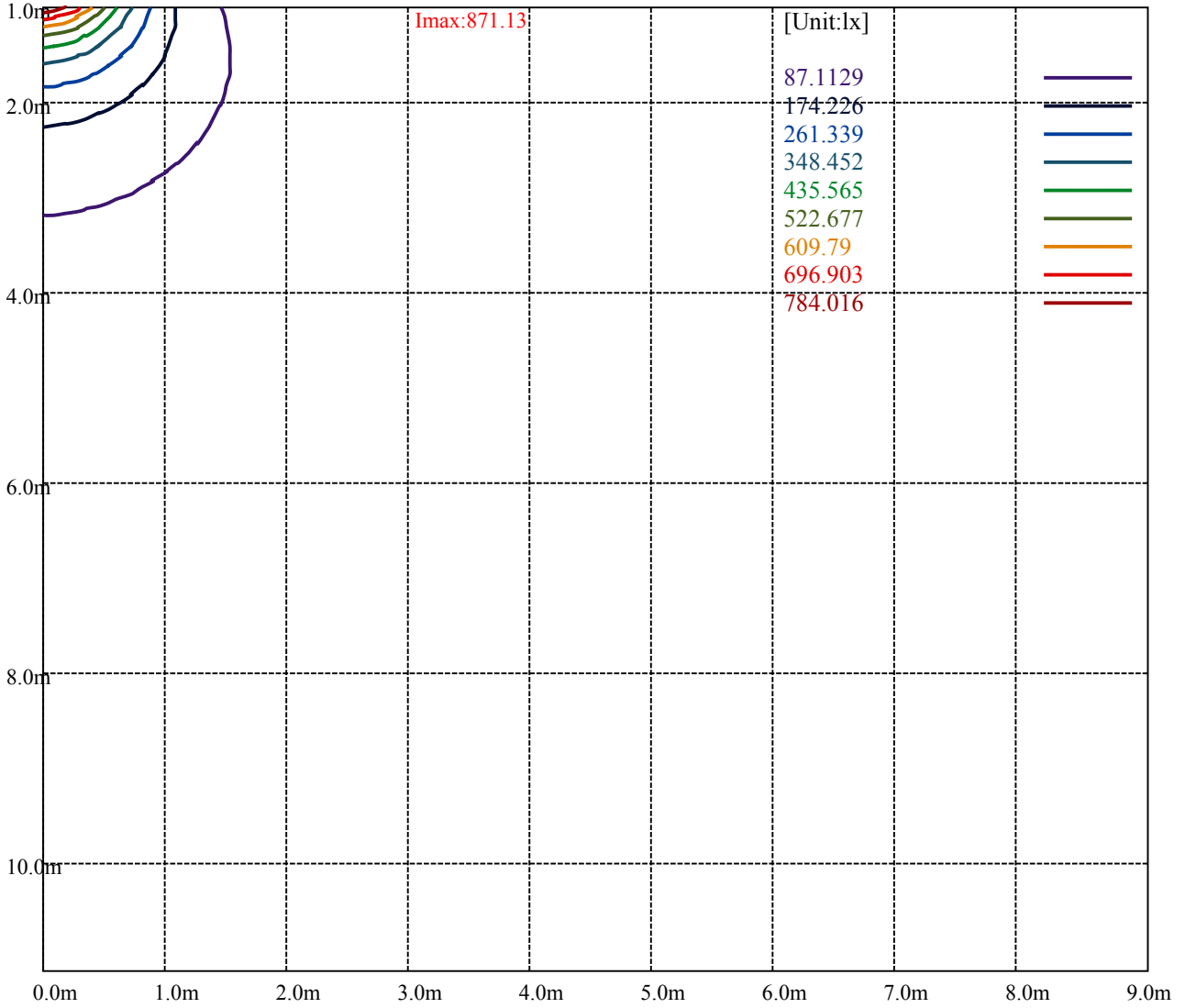
(90%I<sub>max</sub>) 784.016





(10%Emax) 9.652534	—
(20%Emax) 19.30511	—
(30%Emax) 28.95756	—
(40%Emax) 38.61011	—
(50%Emax) 48.26267	—
(60%Emax) 57.91522	—
(70%Emax) 67.56778	—
(80%Emax) 77.22022	—
(90%Emax) 86.87277	—





Luminance Table

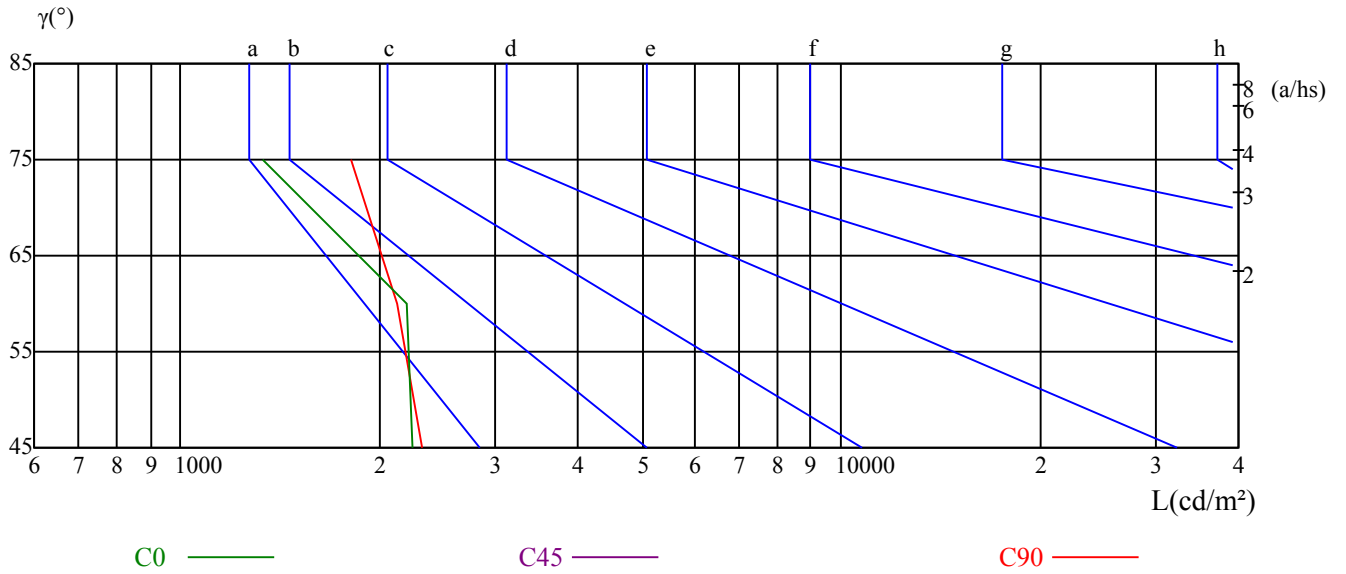
$\gamma$	45	50	55	60	65	70	75	80	85
C0	2247	0	0	2197	0	0	1333	0	0
C45	0	0	0	0	0	0	0	0	0
C90	2319	0	0	2132	0	0	1807	0	0

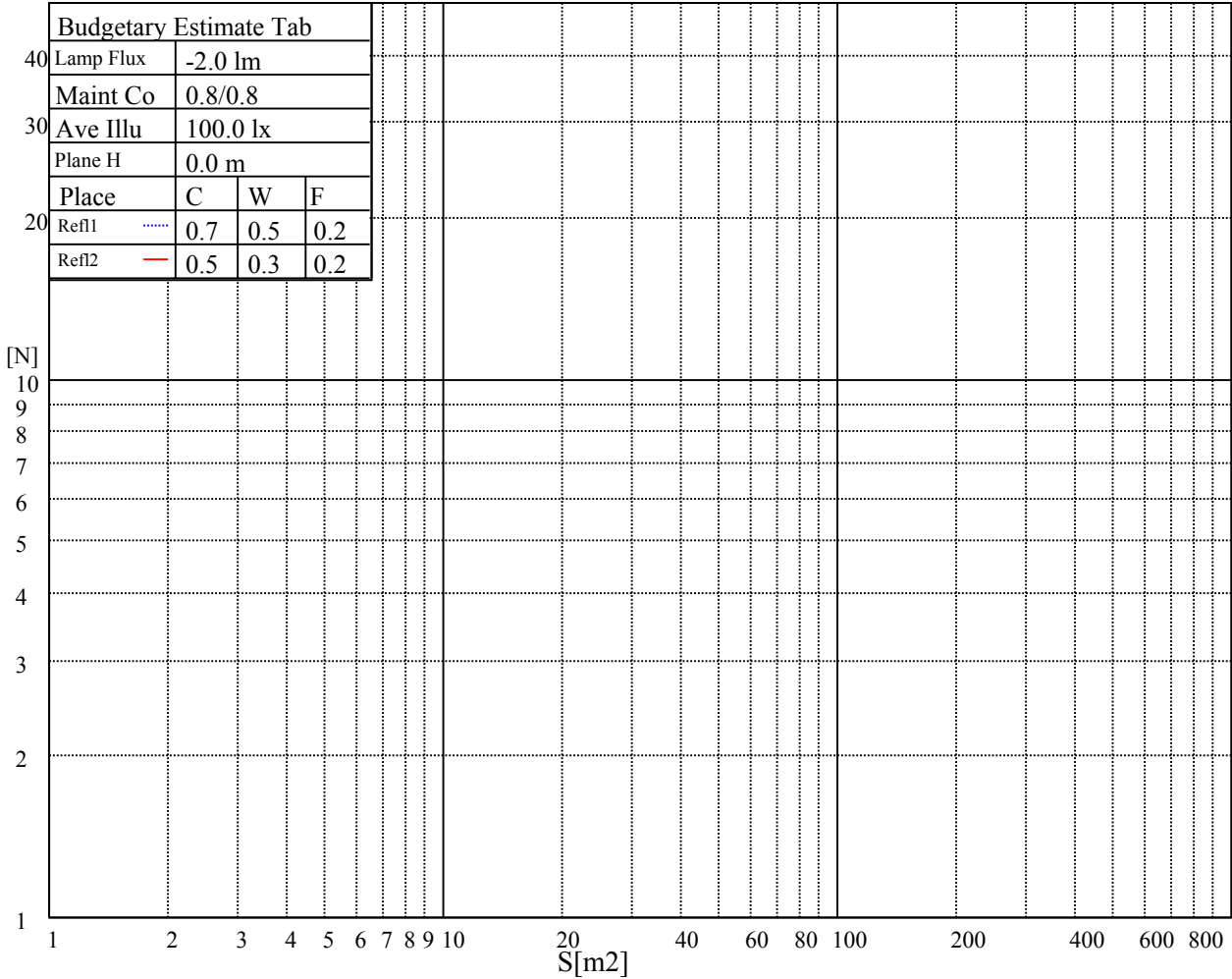
L(Hor)(65)	L(Ver)(65)	L45(65)	L(Hor)(75)	L(Ver)(75)	L45(75)	L(Hor)(85)	L(Ver)(85)	L45(85)
0	0	0	3116	2183	0	0	0	0

Glare Table

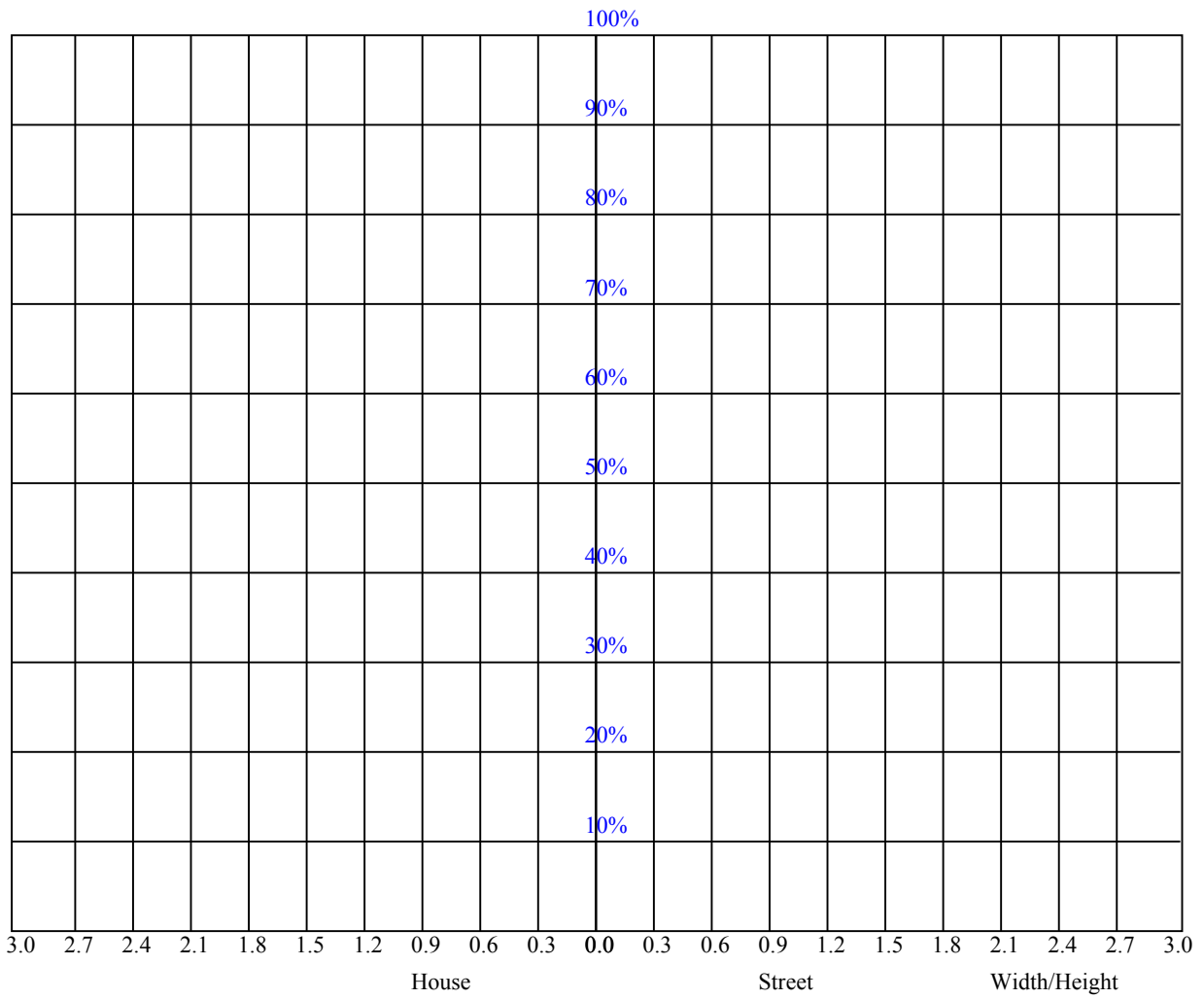
Glare	Quality	Service Values Illuminance(lx)							
1.15	A	2000	1000	500	<=300				
1.5	B		2000	1000	500	<=300			
1.85	C			2000	1000	500	<=300		
2.2	D				2000	1000	500	<=300	
2.55	E					2000	1000	500	<=300
		a	b	c	d	e	f	g	h

Luminance Limiting Curve





RHOCC	80			70			50			30			10			0
RHOW	50	30	10	50	30	10	50	30	10	50	30	10	50	30	10	0
RCR	COEFFICIENTS OF UTILIZATION RHOF=20 CU															
0	0.00	0.00	0.00	0.00	0.00	0.00	0.00	0.00	0.00	0.00	0.00	0.00	0.00	0.00	0.00	0.00
1	0.00	0.00	0.00	0.00	0.00	0.00	0.00	0.00	0.00	0.00	0.00	0.00	0.00	0.00	0.00	0.00
2	0.00	0.00	0.00	0.00	0.00	0.00	0.00	0.00	0.00	0.00	0.00	0.00	0.00	0.00	0.00	0.00
3	0.00	0.00	0.00	0.00	0.00	0.00	0.00	0.00	0.00	0.00	0.00	0.00	0.00	0.00	0.00	0.00
4	0.00	0.00	0.00	0.00	0.00	0.00	0.00	0.00	0.00	0.00	0.00	0.00	0.00	0.00	0.00	0.00
5	0.00	0.00	0.00	0.00	0.00	0.00	0.00	0.00	0.00	0.00	0.00	0.00	0.00	0.00	0.00	0.00
6	0.00	0.00	0.00	0.00	0.00	0.00	0.00	0.00	0.00	0.00	0.00	0.00	0.00	0.00	0.00	0.00
7	0.00	0.00	0.00	0.00	0.00	0.00	0.00	0.00	0.00	0.00	0.00	0.00	0.00	0.00	0.00	0.00
8	0.00	0.00	0.00	0.00	0.00	0.00	0.00	0.00	0.00	0.00	0.00	0.00	0.00	0.00	0.00	0.00
9	0.00	0.00	0.00	0.00	0.00	0.00	0.00	0.00	0.00	0.00	0.00	0.00	0.00	0.00	0.00	0.00
10	0.00	0.00	0.00	0.00	0.00	0.00	0.00	0.00	0.00	0.00	0.00	0.00	0.00	0.00	0.00	0.00



## Intensity data(cd)

Appendix Page: 14 Total:14

<b>C/γ(°)</b>	<b>0.0</b>	<b>15.0</b>	<b>30.0</b>	<b>45.0</b>	<b>60.0</b>	<b>75.0</b>	<b>90.0</b>	<b>105.0</b>	<b>120.0</b>
<b>0.0</b>	871.13	834.56	781.92	705.45	584.24	266.36	9.20	6.74	6.61
<b>30.0</b>	869.10	830.89	762.23	676.33	542.16	297.51	10.69	7.29	7.26
<b>60.0</b>	868.36	821.19	717.09	595.90	445.46	276.87	17.47	7.85	7.16
<b>90.0</b>	867.53	826.87	722.20	575.63	395.18	198.62	15.24	6.74	7.07
<b>120.0</b>	868.36	823.57	718.28	590.28	443.80	276.68	20.82	8.03	7.26
<b>150.0</b>	869.65	829.70	753.11	666.20	533.96	338.16	14.78	7.29	7.35
<b>180.0</b>	871.13	824.12	761.22	674.67	553.85	256.22	8.83	7.02	7.26
<b>210.0</b>	869.10	821.46	741.44	650.26	514.34	286.64	10.32	6.92	6.79
<b>240.0</b>	868.36	823.48	717.09	586.87	440.30	273.46	20.91	7.85	6.79
<b>270.0</b>	867.53	817.07	704.42	551.77	367.27	167.56	7.62	6.28	6.42
<b>300.0</b>	868.36	820.00	715.91	589.91	438.37	271.71	15.71	7.29	6.51
<b>330.0</b>	869.65	824.03	750.47	657.91	521.25	233.74	8.36	6.83	6.61
<b>360.0</b>	871.13	834.56	781.92	705.45	584.24	266.36	9.20	6.74	6.61
<b>C/γ(°)</b>	<b>135.0</b>	<b>150.0</b>	<b>165.0</b>	<b>180.0</b>					
<b>0.0</b>	7.05	7.86	8.62	9.06					
<b>30.0</b>	7.79	8.41	8.80	8.88					
<b>60.0</b>	7.79	8.41	8.80	8.88					
<b>90.0</b>	7.70	8.41	8.90	8.88					
<b>120.0</b>	7.79	8.41	8.90	8.97					
<b>150.0</b>	7.88	8.50	8.99	9.06					
<b>180.0</b>	7.88	8.60	8.99	9.06					
<b>210.0</b>	7.14	7.86	8.62	8.88					
<b>240.0</b>	7.14	7.86	8.52	8.88					
<b>270.0</b>	7.05	7.86	8.52	8.88					
<b>300.0</b>	6.96	7.76	8.62	8.97					
<b>330.0</b>	7.05	7.86	8.62	9.06					
<b>360.0</b>	7.05	7.86	8.62	9.06					