



Item#: **55027**  
**LED 48" STRIP FIXTURE**  
 LED READY FIXTURE

**FEATURES**

- Use 30% less energy than a traditional fluorescent fixture
- Die formed, and rigidly fabricated
- LED ready with non-shunted sockets
- Pre-wired at one end
- Designed for pendant or chain mounting, adjustable cable

**APPLICATION**

Ideal for larger warehouses, retail applications, commercial buildings and work areas.

**ELECTRICAL**

Lamp Type (not included)	T8
Number of Lamps	2
Voltage	120-277V

**ENVIRONMENT**

Operating Temperature	-4° ~ 122°F
Suitable Location	<b>DAMP</b>
Ingress Protection Rating	IP40

**LIFESPAN**

Warranty (Years)	<b>2</b>
------------------	----------

**CONSTRUCTION**

Housing	22 Gauge C.R.S
Base / Power Supply	Hard Wired
Finish	High Gloss Baked White Enamel

**QUALIFICATIONS**



*Operating temperature may vary depending on the lamps used. - Specifications are subject to change without notice.*

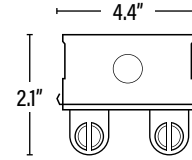
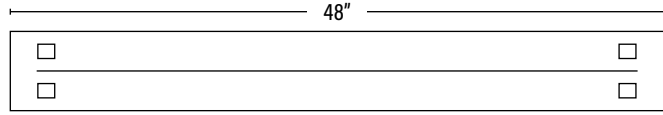
PERFORMANCE DATA

Item#: **55027**  
**LED 48" STRIP FIXTURE**



**DIMENSIONS** (Inches)

Length	48"
Width	4.4"
Height	2.1"
Weight (Lbs)	--



**SUPPORTING DOCUMENTS** (Grey = not available at this time.)

Product Sheet	VIEW
Install Instructions	VIEW

**PACKAGING**

		UPC	DIMENSIONS (LxWxH)	GROSS WEIGHT (Lbs)
Master Carton	1	811768025187	49.2" x 4.6" x 2.3"	5.5
Country of Origin	China			
HS Tariff	9405.10.6020			

**ORDERING**

ITEM#	DESCRIPTION	CASE
55027	LED 48" STRIP FIXTURE FOR 2/T8 - SUPERIOR LIFE®	1

**ACCESSORIES**

54896	360° LOW/HIGH BAY FIXTURE OCCUPANCY PIR SENSOR 30' DIA, 8-40' HEIGHT 800W/1200W • 120/277V - SUPERIOR LIFE®	50
54894	EXTENDER MOUNT FOR SENSOR 54896/54897/54898 - SUPERIOR LIFE®	100
45005	WIRE GUARD FOR 4' STRIP FIXTURE/WHITE	1
55004	WHITE REFLECTOR FOR 4' OR 8' STRIP FIXTURE	1
54710	PRE-WIRED NON-SHUNTED SOCKETS FOR A 4FT STRIP FIXTURE - SUPERIOR LIFE®	10

**ADDITIONAL INFORMATION:**

- Pairs with Superior Life® Direct Wire Single-End or Double-End UL Type B Lamps. Single-end pre-wired fixtures can also be wired double-end by the end-user if needed. Follow specific lamp installation wiring instructions for correct wiring.