



Item#: **55641**  
**LED 4' STRIP FIXTURE**  
LED READY FIXTURE

**FEATURES**

- Use 30% less energy than a traditional fluorescent fixture
- Die formed, and rigidly fabricated
- LED ready with non-shunted sockets
- Pre-wired at both ends
- Works with both Single-End and Double-End Direct Wire lamps
- Designed for surface or chain mounting

**APPLICATION**

Ideal for larger warehouses, retail applications, commercial buildings and work areas.

**ELECTRICAL**

Lamp Type (not included)	T8
Number of Lamps	2
Voltage	120-277V

**ENVIRONMENT**

Operating Temperature	-4° ~ 122°F
Suitable Location	<b>DAMP</b>
Ingress Protection Rating	IP40

**LIFESPAN**

Warranty (Years)	<b>2</b>
------------------	----------

**CONSTRUCTION**

Housing	22 Gauge C.R.S
Base / Power Supply	Hard Wired
Finish	High Gloss Baked White Enamel

**QUALIFICATIONS**



*Operating temperature may vary depending on the lamps used. • Specifications are subject to change without notice.*

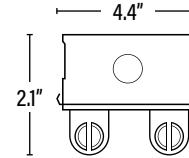
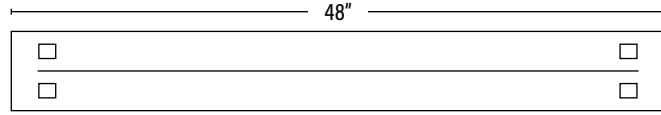
Item#: **55641**  
**LED 4' STRIP FIXTURE**



ITEM INFORMATION

**DIMENSIONS** (Inches)

Length	48"
Width	4.4"
Height	2.1"
Weight (Lbs)	--



**SUPPORTING DOCUMENTS** (Grey = not available at this time.)

Product Sheet	VIEW
Install Instructions	VIEW

**PACKAGING**

		UPC	DIMENSIONS (LxWxH)	GROSS WEIGHT (Lbs)
Master Carton	1	811768024968	49.2" x 4.6" x 2.3"	5.5
Country of Origin	China			
HS Tariff	9405.10.6020			

**ORDERING**

ITEM#	DESCRIPTION	CASE
55641	LED 4FT STRIP FIXTURE FOR 2 T8	1

**ACCESSORIES**

54896	LOW/HIGH BAY FIXTURE OCCUPANCY PIR SENSOR 30FT DIA, 8-40FT HEIGHT 800W/1200W - 120/277V	50
54894	EXTENDER MOUNT FOR SENSOR 54896/54897/54898	100
45005	WIRE GUARD FOR 4FT 2L STRIP FIXTURE/WHITE	1
55004	(1) WHITE REFLECTOR FOR 4FT OR 8FT STRIP FIXTURE	1

**REPLACEMENT PARTS**

556417	SOCKET AND WIRE SET ONLY FOR LED 4FT STRIP FIXTURE FOR 2 T8/DE	1
--------	--	---

**ADDITIONAL INFORMATION:**

- Pairs with Superior Life® Direct Wire Single-End or Double-End UL Type B Lamps. Follow specific lamp installation wiring instructions for correct wiring.