



Item#: **55642**
LED 4' STRIP FIXTURE
LED READY FIXTURE

FEATURES

- Use 30% less energy than a traditional fluorescent fixture
- Die formed, and rigidly fabricated
- LED ready with non-shunted sockets
- Pre-wired at both ends
- Works with both Single-End and Double-End Direct Wire lamps
- Designed for surface or chain mounting

APPLICATION

Ideal for larger warehouses, retail applications, commercial buildings and work areas.

ELECTRICAL

Lamp Type (not included)	T8
Number of Lamps	2
Voltage	120-277V

ENVIRONMENT

Operating Temperature	-4° ~ 122°F
Suitable Location	DAMP
Ingress Protection Rating	IP40

LIFESPAN

Warranty (Years)	2
------------------	----------

CONSTRUCTION

Housing	22 Gauge C.R.S
Base / Power Supply	Hard Wired
Finish	High Gloss Baked Black Enamel

QUALIFICATIONS



Operating temperature may vary depending on the lamps used. • Specifications are subject to change without notice.

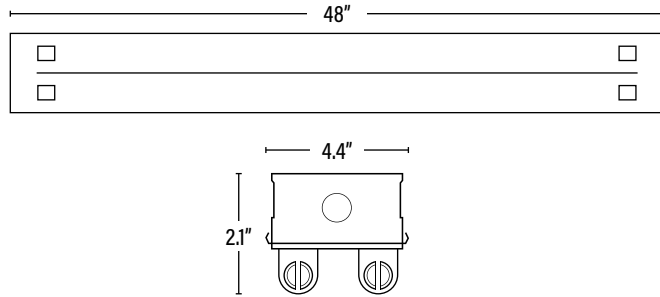
Item#: **55642**
LED 4' STRIP FIXTURE



ITEM INFORMATION

DIMENSIONS (Inches)

Length	48"
Width	4.4"
Height	2.1"
Weight (Lbs)	--



SUPPORTING DOCUMENTS (Grey = not available at this time.)

Product Sheet	VIEW
Install Instructions	VIEW

PACKAGING

		UPC	DIMENSIONS (LxWxH)	GROSS WEIGHT (Lbs)
Master Carton	1	--	49.2" x 4.6" x 2.3"	5.5
Country of Origin	China			
HS Tariff	9405.10.6020			

ORDERING

ITEM#	DESCRIPTION	CASE
55642	LED 4FT STRIP FIXTURE FOR 2 T8/BLK	1

ACCESSORIES

54896	LOW/HIGH BAY FIXTURE OCCUPANCY PIR SENSOR 30FT DIA, 8-40FT HEIGHT 800W/1200W • 120/277V	50
54894	EXTENDER MOUNT FOR SENSOR 54896/54897/54898	100
46005	WIRE GUARD FOR 4FT STRIP FIXTURE/BLACK	1

REPLACEMENT PARTS

556417	SOCKET AND WIRE SET ONLY FOR LED 4FT STRIP FIXTURE FOR 2 T8/DE	1
--------	--	---

ADDITIONAL INFORMATION:

- Pairs with Direct Wire Single-End or Double-End UL Type B Lamps. Follow specific lamp installation wiring instructions for correct wiring.