



TEST REPORT

For

P.Q.L., Inc.

2285 Ward Avenue / Simi Valley, CA 93065

Model Number:	55755	
Report Type:	Electrical, Photometric and ISTMT tests according to the following standards and show the compliance to DLC Program SSL Technical Requirements V5.1	
Standards:	IES LM-79-08: Approved Method: Electrical & Photometric Measurement of Solid-state Lighting Products ANSI C82.77-10-2014: Harmonic Emission Limits – Related Power Quality Requirements for Lighting ANSI/UL 1598-2008: Standard for Safety of Luminaires CIE 190:2010 Calculation and presentation of unified glare rating tables for indoor lighting luminaires IES TM-30-18: IES Method for Evaluating Light Source Color Rendition	
Project Engineer:	Bay Wang	
Report Number:	RKSB220926004-10	
Sample Size:	One sample was received on 2022-09-26 and used for testing.	
Test Date:	2022-10-28 to 2022-11-01	
Report Date:	2022-11-02	
Reviewed By:	Seven Xia/ EE Engineer	
Prepared By:	Bay Area Compliance Laboratories Corp. (Kunshan). No. 248 Chenghu Road, Kunshan, Jiangsu, People’s Republic of China Tel: +86-0512-86175000 Fax: +86-0512-88934268	

1. Product Information and Description

Product Primary Use:	2x2 Luminaires for Ambient Lighting of Interior Commercial Spaces
Voltage and Frequency:	120-277VAC, 50/60Hz
LED Source Manufacturer:	Bridgelux Inc.
LED Source Model:	BXEN-(A)E-13H-9RB
Driver Model:	SIF40-I1050 120-277 W D1-S1S2
Auxiliary Ballast Model:	NA
Auxiliary Housing Model:	NA
White Tunable:	Yes
Field-Adjustable Light Output:	Yes

2. Product Rated Values#

Test Model	CCT(K)	Light Output (lm)	Power(W)	Luminous Efficacy (lm/W)
55755-35K	3500	4400	40	110
		3570	30	119
		3100	25	124
55755-35K	4000	4800	40	120
		3870	30	129
		3350	25	134
55755-50K	5000	4480	40	112
		3630	30	121
		3150	25	126

3. Test List

Test Model	Power(W)	Test Item			
		Goniophotometer Test	Integrating Sphere Test	THDi and PF Test	In-Situ Temperature Measurement Test
55755-35K	40	Yes	Yes	Yes	Yes
	30	NA	Yes	Yes	NA
	25	NA	Yes	Yes	NA
55755-40W-40K	40	NA	Yes	Yes	NA
55755-40W-50K	40	Yes	Yes	Yes	NA

4. Product Photo



LED Driver Photo



5. Test Result

Test Model: 55755-35K

Control setting: 40W

Integrating Sphere Test; Orientation: Downward; Test Voltage: 120V 60Hz;

Test Item	Test Result	DLC Requirements	DLC Requirements(With tolerances only)	Conclusion
Light Output(lm)	4776.26	≥2000	≥1800	Pass
Power(W)	42.67	None.	None.	N/A
Total Efficacy(lm/W)	111.93	≥110	≥106.7	Pass
CCT(K)	3403	None ⁱ	None.	N/A
Duv	-0.00044	None ⁱ	None.	N/A
IES R _r	84	70	69	Pass
IES R _g	97	89	88	
IES Rcs,h1	-12%	-12%~23%	-13%~24%	
R _a	82.4	≥80	≥79	
R ₉	7	≥0	≥-1	

Note:

- i. White-tunable products are not required to meet the chromaticity requirements in DLC V5.1.

Goniophotometer Test; Orientation: Downward; Test Voltage: 120V 60Hz;

Test Item	Test Result	DLC Requirements	DLC Requirements(With tolerances only)	Conclusion
Light Output(lm)	4777.9	≥2000	≥1800	Pass
Power(W)	42.69	None.	None.	N/A
Total Efficacy(lm/W)	111.97	≥110	≥106.7	Pass
Zonal Lumen Distribution(0-60°)	78.53%	0-60°≥75%	0-60°≥72%	Pass
SC:0-180°	1.27	1.0≤SC≤2.0	0.9≤SC≤2.1	Pass
SC:90-270°	1.27	1.0≤SC≤2.0	0.9≤SC≤2.1	Pass

Goniophotometer THDi、PF Test; Orientation: Downward;

Test Voltage	Test Item	Test Result	DLC Requirements	DLC Requirements(With tolerances and/or allowances)	Conclusion
120	Power Factor	0.9955	≥0.9	≥0.87	Pass
120	THDi	7.03%	≤20%	≤25%	Pass
277	Power Factor	0.9647	≥0.9	≥0.87	Pass
277	THDi	10.89%	≤20%	≤25%	Pass

Integrating Sphere THDi、PF Test; Orientation: Downward;

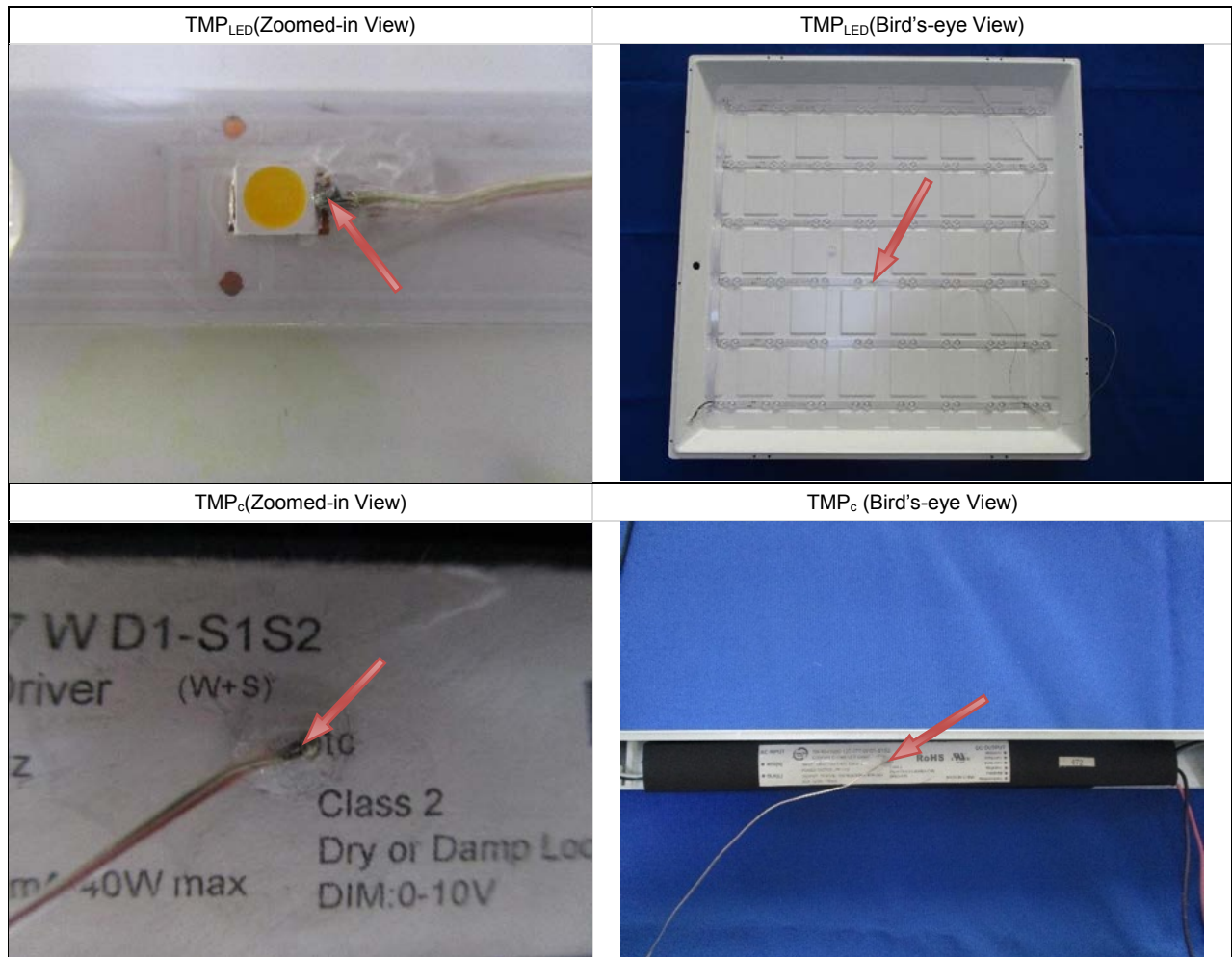
Test Voltage	Test Item	Test Result	DLC Requirements	DLC Requirements(With tolerances and/or allowances)	Conclusion
120	Power Factor	0.9923	≥0.9	≥0.87	Pass
120	THDi	7.23%	≤20%	≤25%	Pass
277	Power Factor	0.9571	≥0.9	≥0.87	Pass
277	THDi	10.84%	≤20%	≤25%	Pass

In-Situ Temperature Measurement Test: Test Voltage: 120V 60Hz;

Test Item	Test Result	DLC Requirements	DLC Requirements(With tolerances and/or allowances)	Conclusion
TMP _{LED} (°C)	40.8	≤105	With tolerance of ≤ 1.1°C or 0.4%, whichever is greater due to thermocouple tolerance	Pass
TMP _c (°C)	48.3	≤90	With tolerance of ≤ 1.1°C or 0.4%, whichever is greater due to thermocouple tolerance	Pass
Drive Current/Individual LED source(mA)	87.8	≤100	With +5% tolerance	Pass
L ₇₀ Lumen Maintenance Life (Hours)	> 54000	≥50000	None.	Pass
Color Maintenance	0.0014	≤0.004	≤0.0044	Pass

Note:

1. The test results were measured directly from the test equipment.
2. The DLC requirements were listed according to DLC Technical Requirements V5.1.
3. The conclusion is for reference only. Test report that indicate product performance meets DLC Technical Requirements do not represent official DLC product qualification. All decisions regarding product qualification are made by the DLC.



Test Data

[Integrating Sphere System]

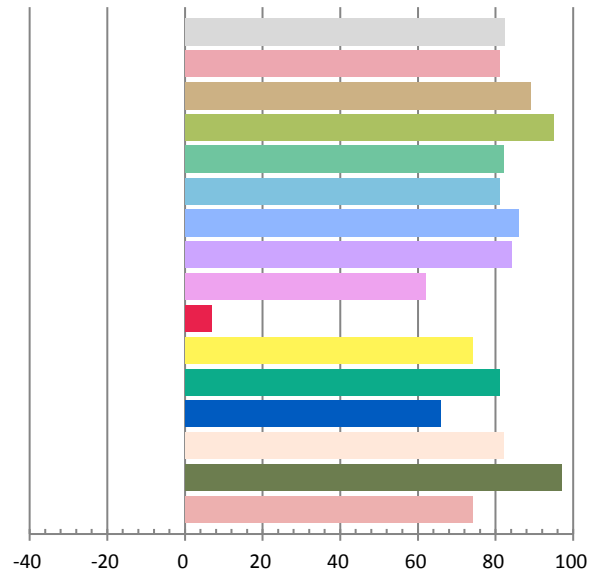
Photometric and Electrical Measurement Result

Voltage (V)	Frequency (Hz)	Current (A)	Power (W)	Power Factor	Luminous Flux(lm)	Efficacy (lm/W)
120.0	60	0.3583	42.67	0.9924	4776.26	111.93

Radiant Flux (W)	CCT (K)	Duv	x	y	u'	v'
14.281	3403	-0.00044	0.4104	0.3922	0.2384	0.5126

Color Rendering Index

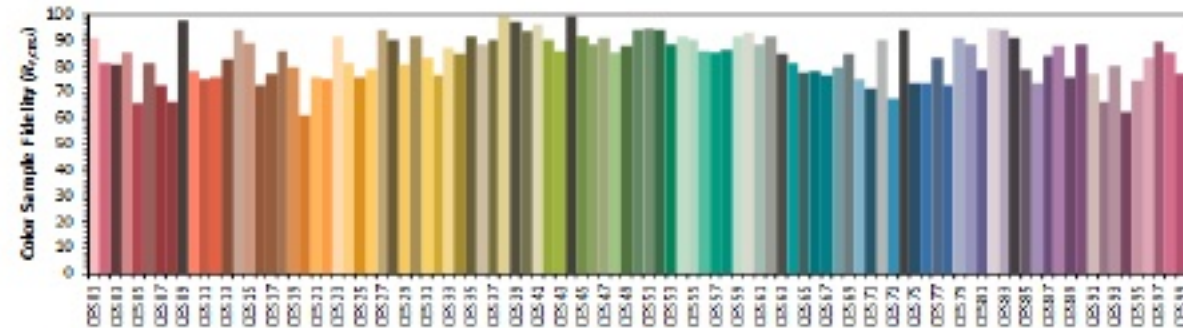
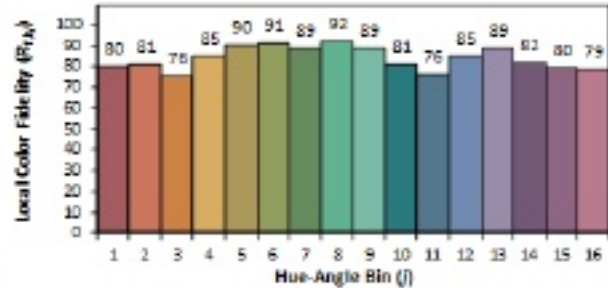
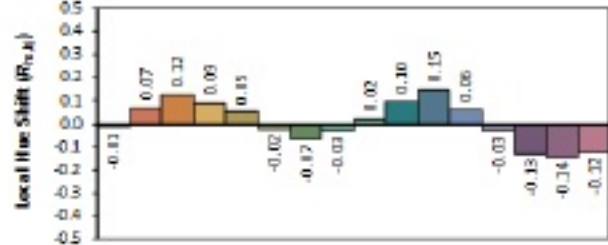
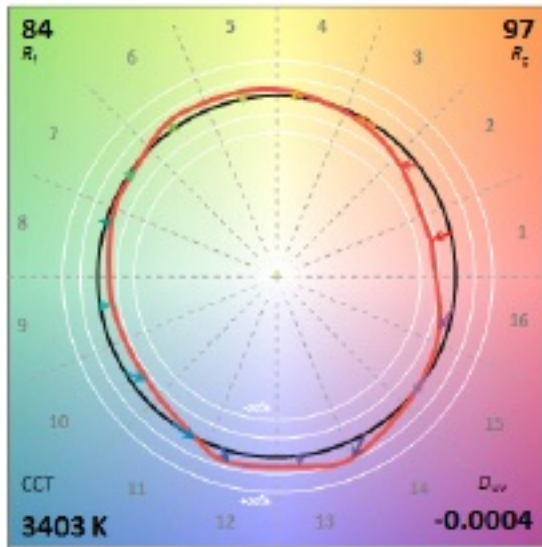
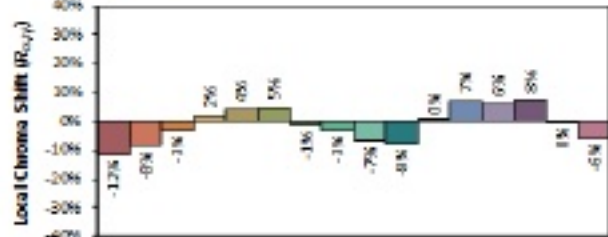
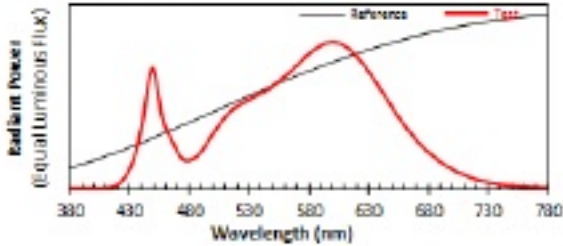
Ra			
82.4			
R1	R2	R3	R4
81	89	95	82
R5	R6	R7	R8
81	86	84	62
R9	R10	R11	R12
7	74	81	66
R13	R14	R15	
82	97	74	



ANSI/IES TM-30-18 Color Rendition Report

Source: User SPD
Date: 2022/10/29

Manufacturer: F.O.L., Inc.
Model: 55755-40w-18x



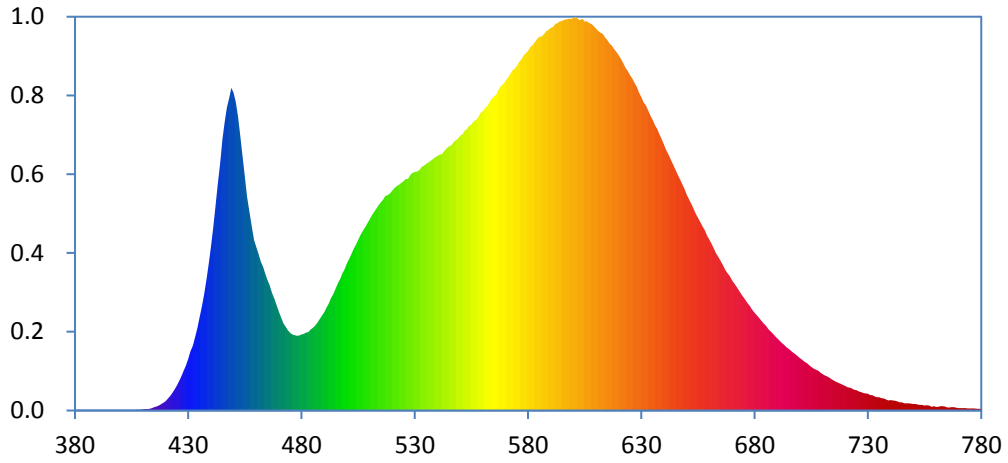
Notes: This is a recommended method for displaying ANSI/IES TM-30-18 information.

x 0.4104
y 0.3922
u' 0.2384
v' 0.5126

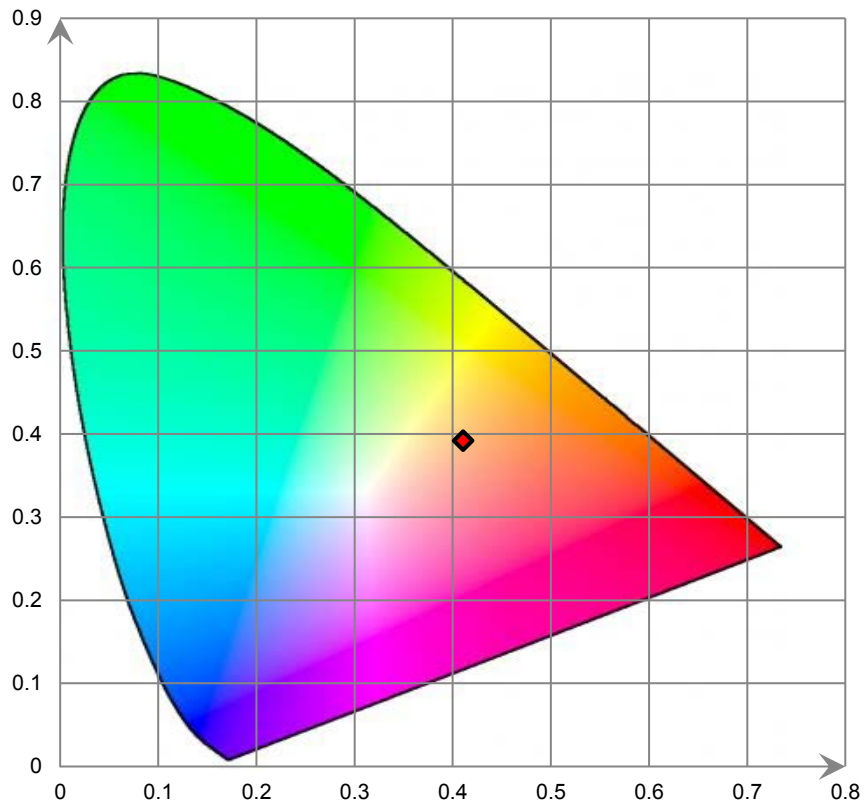
CIE 13.3-1995
(CRI)
R_a 83
R_s 8

Colors are for visual orientation purposes only. Created with the ANSI/IES TM-30-18 Calculator Version 2.00.

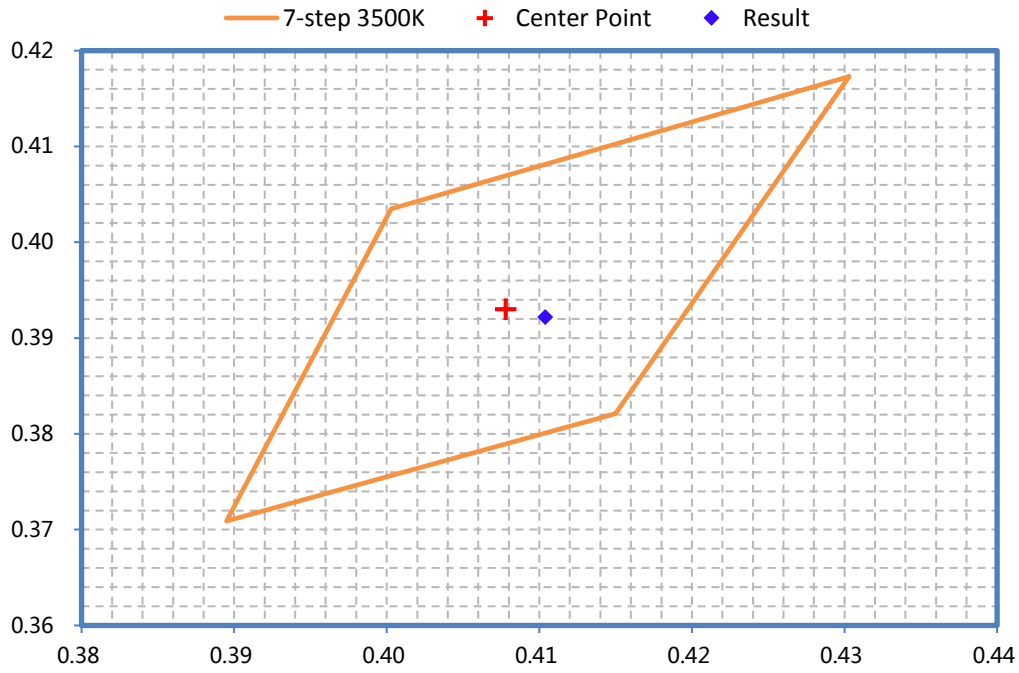
Relative Spectral Power Distribution



CIE 1931 x y Chromaticity Diagram



ANSI C78.377-2017 Chromaticity Quadrangles



[Goniophotometer System]

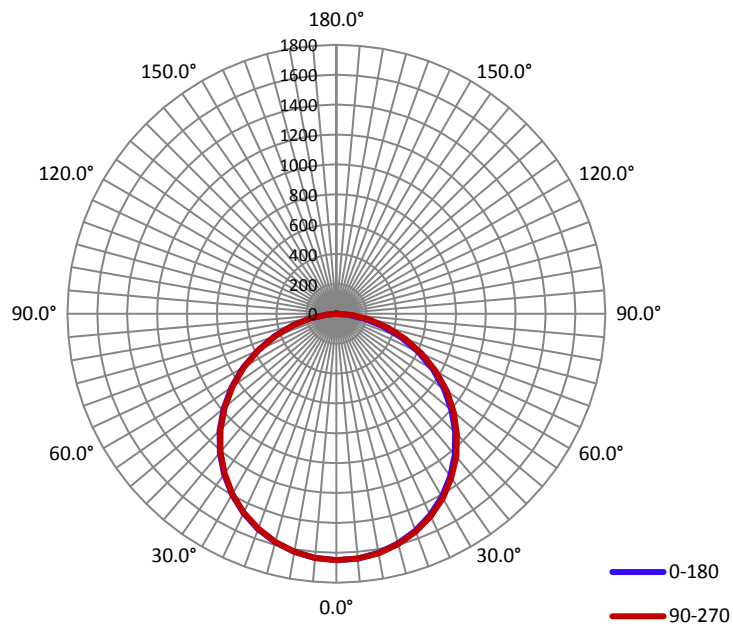
Electrical Measurement

Input Voltage (V)	Frequency (Hz)	Input Current (A)	Power (W)	Power Factor
120.0	60	0.357	42.69	0.995

Photometric Measurement

Luminous Flux (lm)	Efficacy (lm/W)	I _{max} (cd)	S/MH (C0/180)	S/MH (C90/270)
4777.9	111.97	1649.5	1.27	1.27

Luminous Intensity Distribution



	C0/180	C45/225	C90/270	C135/315	AVG.
Beam Angle (50% I _{max}):	113.4	113.6	113.9	113.6	113.6
Field Angle (10% I _{max}):	161.4	162.2	162.9	162.4	162.2

Luminous Intensity (cd) Distribution Data

C y								
	0°	22.5°	45°	67.5°	90°	112.5°	135°	157.5°
0.0°	1648.9	1648.9	1648.9	1648.9	1648.9	1648.9	1648.9	1648.9
5.0°	1643.5	1644.0	1644.4	1644.8	1645.0	1644.5	1644.1	1643.3
10.0°	1624.4	1625.8	1626.8	1627.1	1627.4	1626.1	1625.6	1623.7
15.0°	1591.4	1593.4	1596.3	1596.3	1596.9	1594.8	1593.7	1591.0
20.0°	1543.9	1547.5	1551.0	1551.6	1551.9	1550.4	1548.9	1545.1
25.0°	1486.0	1489.6	1494.0	1495.1	1494.6	1492.1	1490.3	1484.7
30.0°	1413.9	1417.3	1421.5	1423.3	1424.1	1420.5	1418.4	1412.8
35.0°	1328.2	1333.1	1339.4	1341.2	1340.8	1337.4	1334.6	1327.5
40.0°	1233.5	1238.5	1243.5	1246.1	1247.6	1243.6	1238.3	1231.0
45.0°	1124.5	1130.2	1137.6	1140.6	1140.7	1138.2	1131.7	1124.9
50.0°	1007.0	1013.9	1018.9	1025.3	1024.8	1020.4	1013.4	1008.3
55.0°	880.9	887.9	893.5	900.6	901.1	895.7	887.8	882.0
60.0°	746.7	753.9	760.4	765.7	769.3	763.9	754.9	747.8
65.0°	604.3	614.9	622.3	628.5	630.5	627.6	618.1	606.6
70.0°	461.8	470.2	479.3	489.8	491.5	486.3	478.9	466.7
75.0°	321.7	330.4	340.6	351.2	353.9	349.3	339.0	328.2
80.0°	190.6	199.2	210.0	221.0	223.3	219.7	209.9	199.1
85.0°	80.3	86.5	95.5	102.6	107.5	104.3	96.1	87.8
90.0°	0.0	0.0	2.1	6.3	7.1	5.2	2.0	0.0
95.0°	0.0	0.0	0.0	0.0	0.0	0.0	0.0	0.0
100.0°	0.0	0.0	0.0	0.0	0.0	0.0	0.0	0.0
105.0°	0.0	0.0	0.0	0.0	0.0	0.0	0.0	0.0
110.0°	0.0	0.0	0.0	0.0	0.0	0.0	0.0	0.0
115.0°	0.0	0.0	0.0	0.0	0.0	0.0	0.0	0.0
120.0°	0.0	0.0	0.0	0.0	0.0	0.0	0.0	0.0
125.0°	0.0	0.0	0.0	0.0	0.0	0.0	0.0	0.0
130.0°	0.0	0.0	0.0	0.0	0.0	0.0	0.0	0.0
135.0°	0.0	0.0	0.0	0.0	0.0	0.0	0.0	0.0
140.0°	0.0	0.0	0.8	0.8	1.1	1.0	0.9	1.2
145.0°	0.9	1.7	1.7	2.0	1.5	2.0	1.9	2.0
150.0°	1.6	2.0	2.2	2.2	2.4	2.4	2.3	2.9
155.0°	2.2	2.5	3.0	3.0	2.6	3.0	3.1	3.3
160.0°	2.3	2.9	3.1	2.5	3.2	3.7	3.1	3.6
165.0°	2.3	3.3	3.8	2.6	3.6	3.5	3.0	3.2
170.0°	3.1	2.9	3.6	3.6	4.0	3.8	3.9	3.5
175.0°	3.9	4.1	4.2	4.1	4.1	3.6	4.3	4.0
180.0°	0.0	0.0	0.0	0.0	0.0	0.0	0.0	0.0

Luminous Intensity (cd) Distribution Data (cont.)

$\begin{matrix} C \\ \backslash \\ \gamma \end{matrix}$	180°	202.5°	225°	247.5°	270°	292.5°	315°	337.5°
0.0°	1648.9	1648.9	1648.9	1648.9	1648.9	1648.9	1648.9	1648.9
5.0°	1640.1	1639.9	1639.6	1639.4	1639.6	1640.2	1640.2	1641.2
10.0°	1618.1	1617.8	1616.7	1616.1	1616.7	1617.0	1618.3	1618.9
15.0°	1582.9	1581.5	1579.9	1580.0	1579.7	1580.7	1582.7	1584.4
20.0°	1534.0	1531.2	1530.1	1530.0	1530.0	1531.0	1533.3	1535.5
25.0°	1471.5	1468.9	1467.9	1466.6	1468.2	1469.0	1471.4	1473.3
30.0°	1396.3	1394.0	1392.8	1392.8	1392.2	1394.0	1396.8	1400.0
35.0°	1310.3	1307.8	1305.8	1304.0	1305.2	1307.2	1308.4	1312.1
40.0°	1213.8	1209.2	1206.7	1205.1	1206.9	1208.7	1209.8	1214.5
45.0°	1105.3	1098.6	1095.4	1095.8	1095.5	1097.2	1100.3	1105.8
50.0°	984.4	978.7	975.6	976.6	976.2	977.8	980.9	984.1
55.0°	854.9	848.0	846.0	846.6	846.1	848.2	851.1	855.2
60.0°	720.6	715.5	713.1	712.4	714.6	716.3	716.6	721.6
65.0°	580.3	575.5	573.9	573.5	576.3	578.7	577.9	581.3
70.0°	439.4	432.1	432.1	435.3	435.4	437.8	438.6	440.7
75.0°	298.9	295.2	297.0	301.0	301.3	302.7	302.7	300.7
80.0°	173.7	170.4	172.9	174.6	177.0	178.1	175.1	175.0
85.0°	67.3	64.7	65.0	64.6	66.6	67.7	67.6	66.2
90.0°	0.0	0.0	0.0	0.0	0.0	0.0	0.0	0.0
95.0°	0.0	0.0	0.0	0.0	0.0	0.0	0.0	0.0
100.0°	0.0	0.0	0.0	0.0	0.0	0.0	0.0	0.0
105.0°	0.0	0.0	0.0	0.0	0.0	0.0	0.0	0.0
110.0°	0.0	0.0	0.0	0.0	0.0	0.0	0.0	0.0
115.0°	0.0	0.0	0.0	0.0	0.0	0.0	0.0	0.0
120.0°	0.0	0.0	0.0	0.0	0.0	0.0	0.0	0.0
125.0°	0.0	0.0	0.0	0.0	0.0	0.0	0.0	0.0
130.0°	0.0	0.0	0.0	0.0	0.0	0.0	0.0	0.0
135.0°	0.0	0.0	0.0	0.0	0.0	0.0	0.0	0.0
140.0°	0.0	0.0	0.0	0.0	0.0	0.0	0.0	0.7
145.0°	0.0	0.7	0.8	1.3	1.1	1.0	1.1	1.1
150.0°	0.8	1.1	1.9	1.9	1.7	1.7	2.0	1.6
155.0°	1.3	1.8	2.2	2.5	2.4	2.6	2.4	2.8
160.0°	2.0	2.7	2.9	3.2	2.7	2.9	3.0	3.4
165.0°	2.5	3.0	3.7	3.7	3.2	3.6	3.8	3.8
170.0°	3.4	3.7	3.9	4.1	3.9	4.1	4.0	4.0
175.0°	2.7	3.9	4.4	4.7	4.5	4.6	4.6	4.6
180.0°	0.0	0.0	0.0	0.0	0.0	0.0	0.0	0.0

Test Model: 55755-35K
Control setting: 30W

THDi, PF Test; Orientation: Downward;					
Test Voltage	Test Item	Test Result	DLC Requirements	DLC Requirements(With tolerances and/or allowances)	Conclusion
120	Power Factor	0.9882	≥0.9	≥0.87	Pass
120	THDi	8.64%	≤20%	≤25%	Pass
277	Power Factor	0.9357	≥0.9	≥0.87	Pass
277	THDi	11.96%	≤20%	≤25%	Pass

Note:

1. The test results were measured directly from the test equipment.
2. The DLC requirements were listed according to DLC Technical Requirements V5.1.
3. The conclusion is for reference only. Test report that indicate product performance meets DLC Technical Requirements do not represent official DLC product qualification. All decisions regarding product qualification are made by the DLC.

Test Data

[Integrating Sphere System]

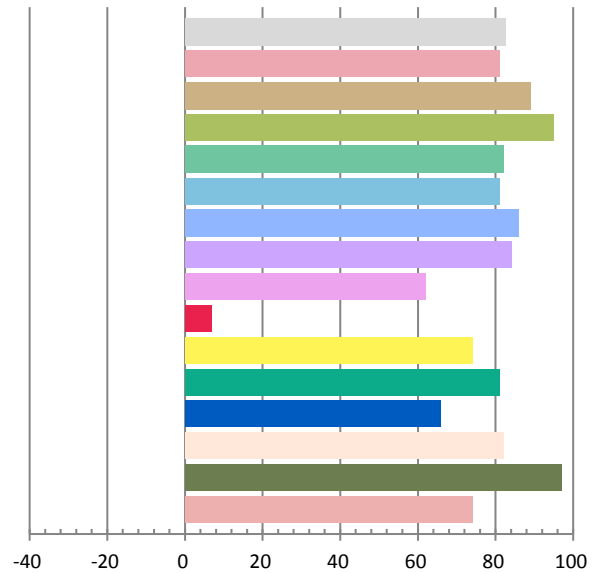
Photometric and Electrical Measurement Result

Voltage (V)	Frequency (Hz)	Current (A)	Power (W)	Power Factor	Luminous Flux(lm)	Efficacy (lm/W)
120.0	60	0.2668	31.65	0.9885	3783.33	119.53

Radiant Flux (W)	CCT (K)	Duv	x	y	u'	v'
11.207	3386	-0.0002	0.4116	0.3933	0.2387	0.5133

Color Rendering Index

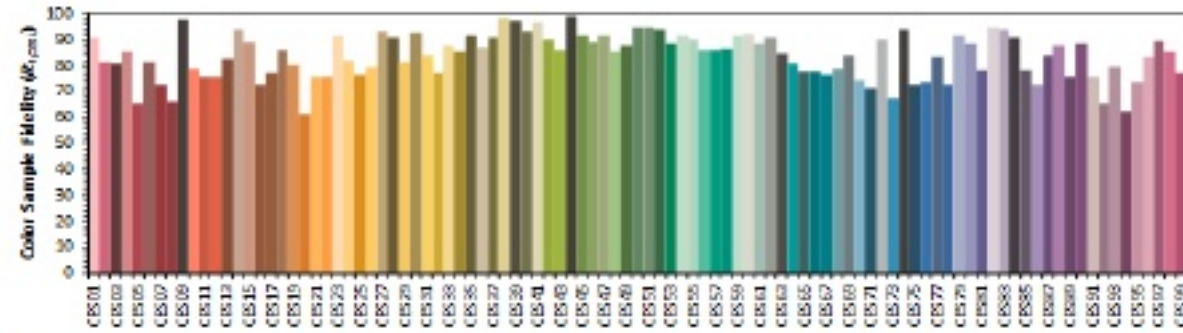
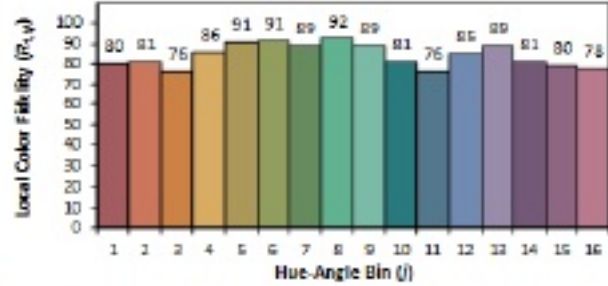
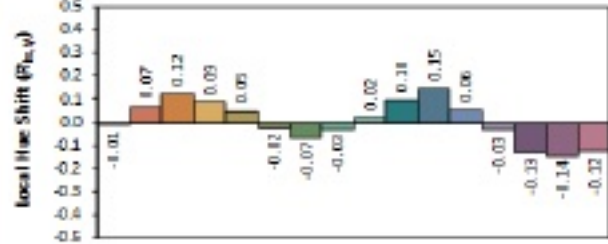
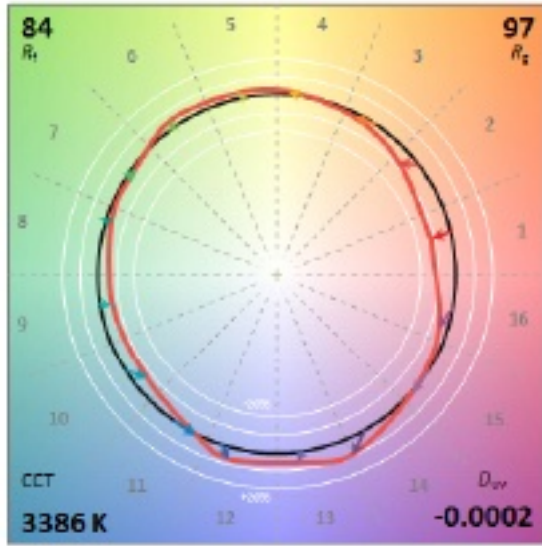
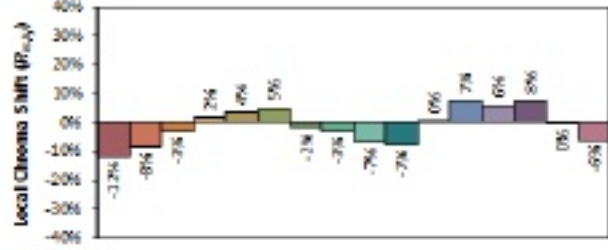
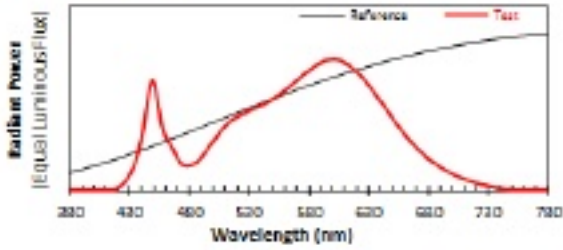
Ra			
82.5			
R1	R2	R3	R4
81	89	95	82
R5	R6	R7	R8
81	86	84	62
R9	R10	R11	R12
7	74	81	66
R13	R14	R15	
82	97	74	



ANSI/IES TM-30-18 Color Rendition Report

Source: User SPD
Date: 2022/10/29

Manufacturer: P.Q.L., Inc.
Model: 55755-30W-18x



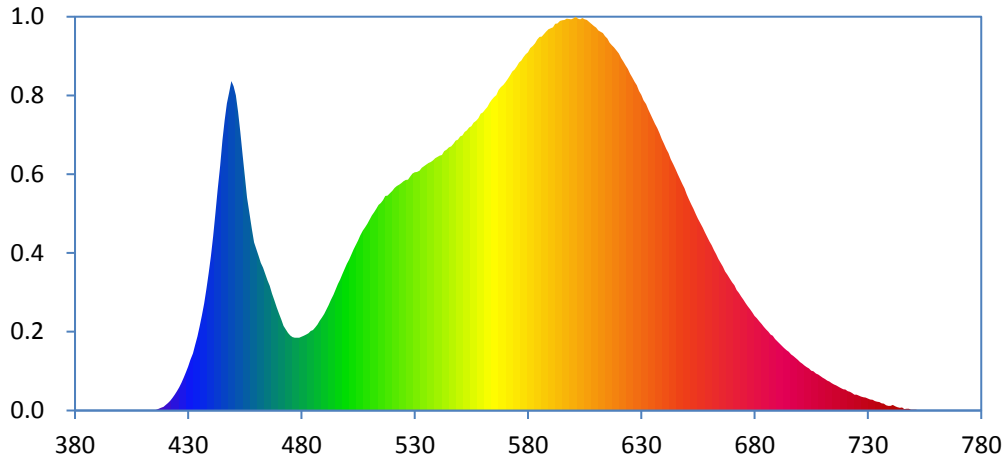
Notes: This is a recommended method for displaying ANSI/IES TM-30-18 information.

x 0.4116
 y 0.3933
 u' 0.2387
 v' 0.5133

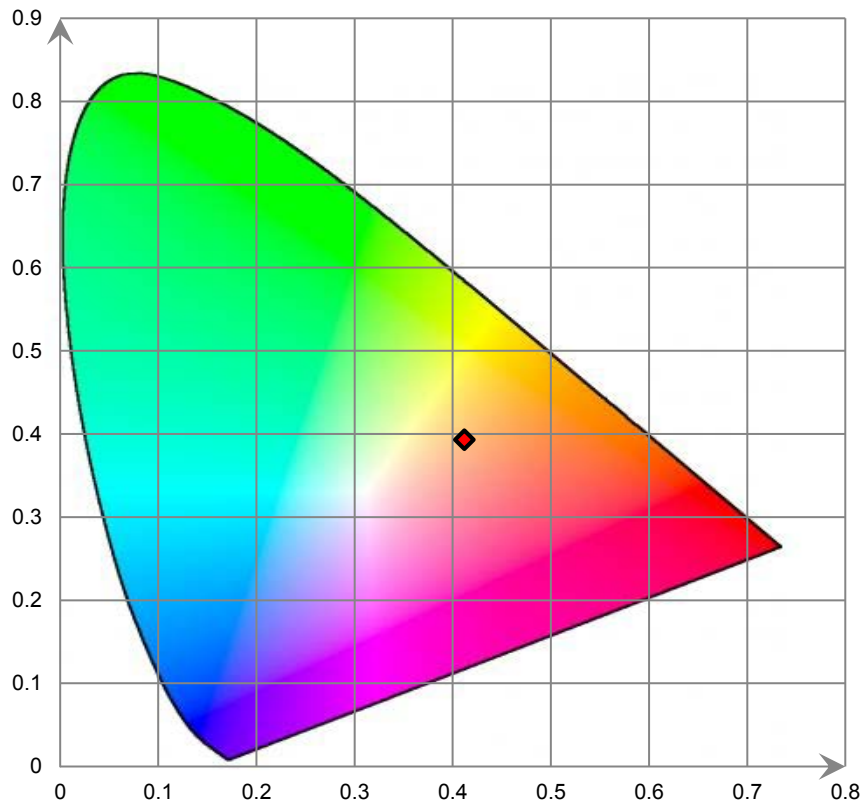
CIE 13.3-1995 (CRI)
 R_a 83
 R_g 7

Colors are for visual orientation purposes only. Created with the ANSI/IES TM-30-18 Calculator Version 2.00.

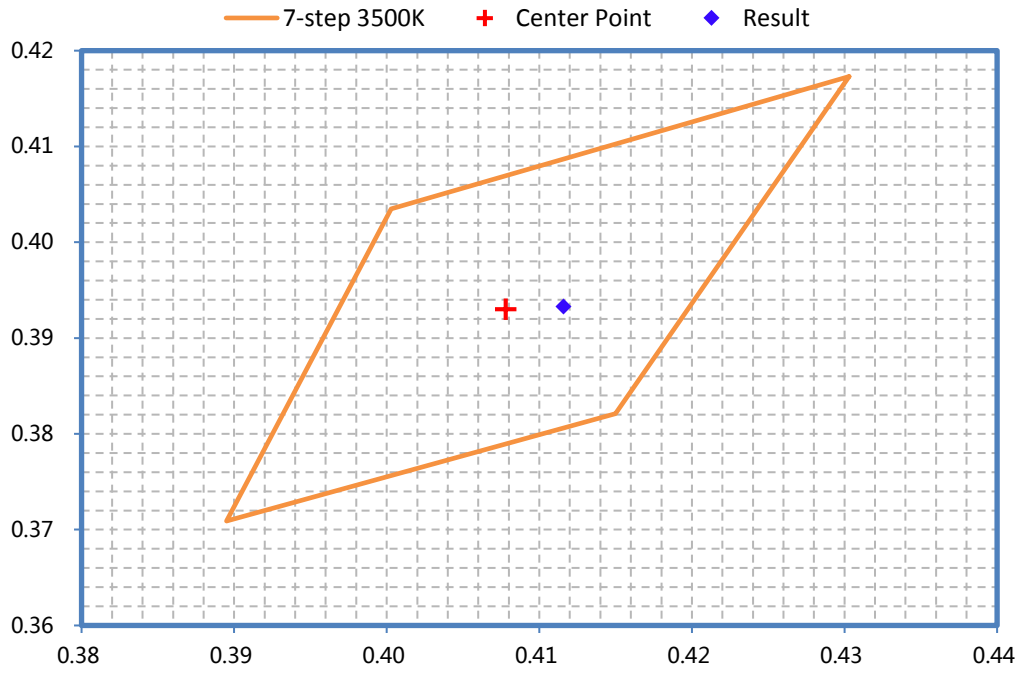
Relative Spectral Power Distribution



CIE 1931 x y Chromaticity Diagram



ANSI C78.377-2017 Chromaticity Quadrangles



Test Model: 55755-35K

Control setting: 25W

THDi, PF Test; Orientation: Downward;					
Test Voltage	Test Item	Test Result	DLC Requirements	DLC Requirements(With tolerances and/or allowances)	Conclusion
120	Power Factor	0.984	≥0.9	≥0.87	Pass
120	THDi	10.13%	≤20%	≤25%	Pass
277	Power Factor	0.9214	≥0.9	≥0.87	Pass
277	THDi	13.28%	≤20%	≤25%	Pass

Note:

1. The test results were measured directly from the test equipment.
2. The DLC requirements were listed according to DLC Technical Requirements V5.1.
3. The conclusion is for reference only. Test report that indicate product performance meets DLC Technical Requirements do not represent official DLC product qualification. All decisions regarding product qualification are made by the DLC.

Test Data

[Integrating Sphere System]

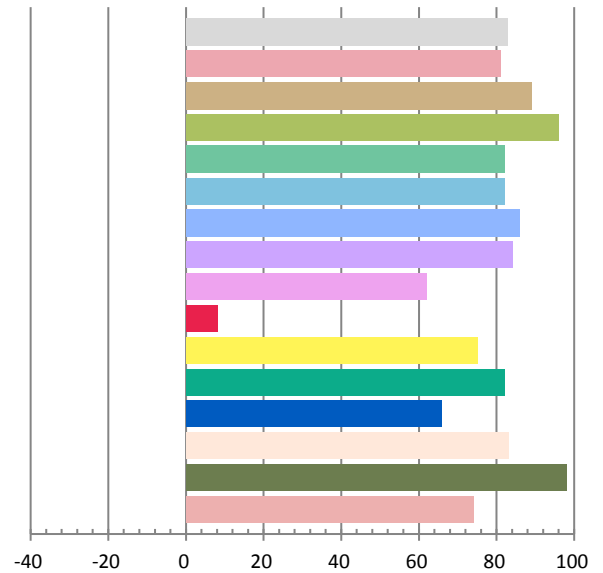
Photometric and Electrical Measurement Result

Voltage (V)	Frequency (Hz)	Current (A)	Power (W)	Power Factor	Luminous Flux(lm)	Efficacy (lm/W)
120.0	60	0.2295	27.1	0.984	3358.54	123.93

Radiant Flux (W)	CCT (K)	Duv	x	y	u'	v'
10.042	3391	-0.00032	0.4112	0.3929	0.2387	0.5130

Color Rendering Index

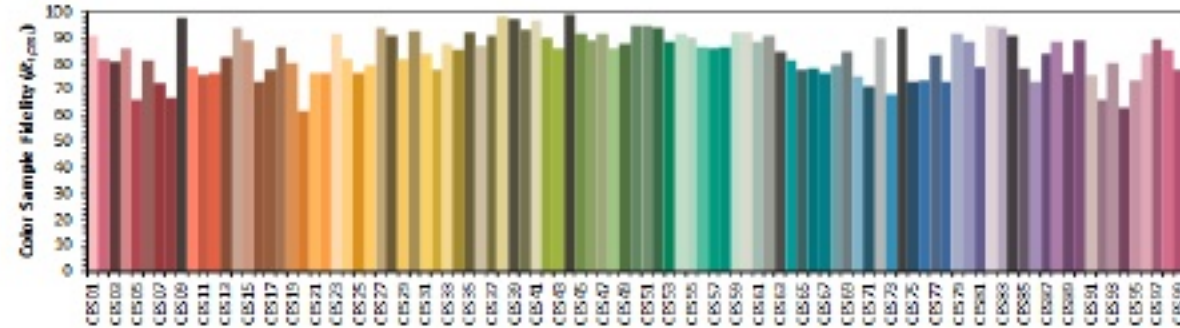
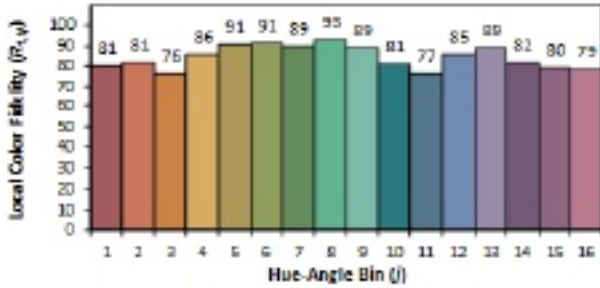
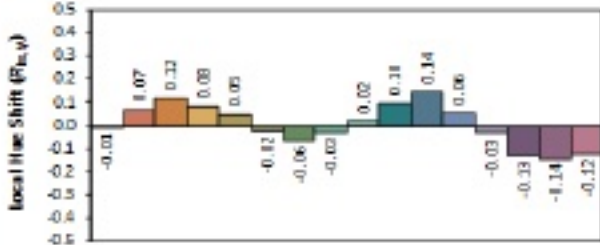
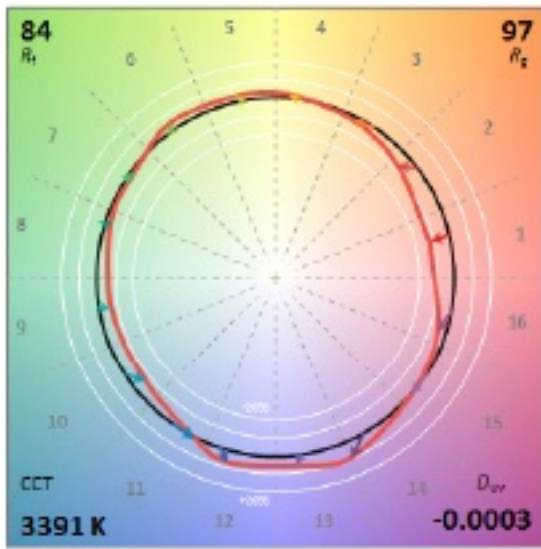
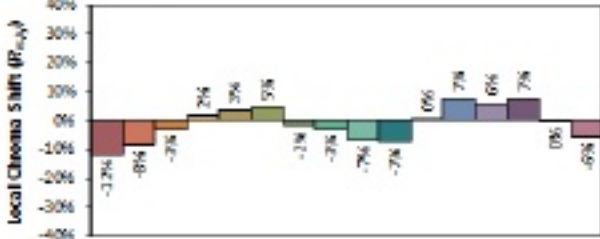
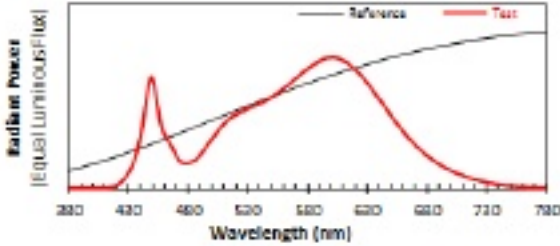
Ra			
82.8			
R1	R2	R3	R4
81	89	96	82
R5	R6	R7	R8
82	86	84	62
R9	R10	R11	R12
8	75	82	66
R13	R14	R15	
83	98	74	



ANSI/IES TM-30-18 Color Rendition Report

Source: User SPD
Date: 2022/10/29

Manufacturer: P.O.L., Inc.
Model: 55755-25W-35x



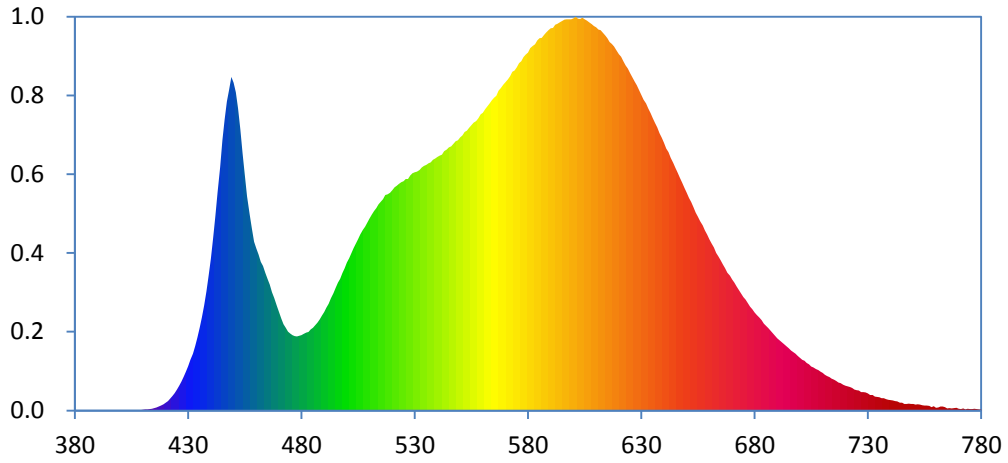
Notes: This is a recommended method for displaying ANSI/IES TM-30-18 information.

x 0.4112
 y 0.3929
 w' 0.2387
 v' 0.5130

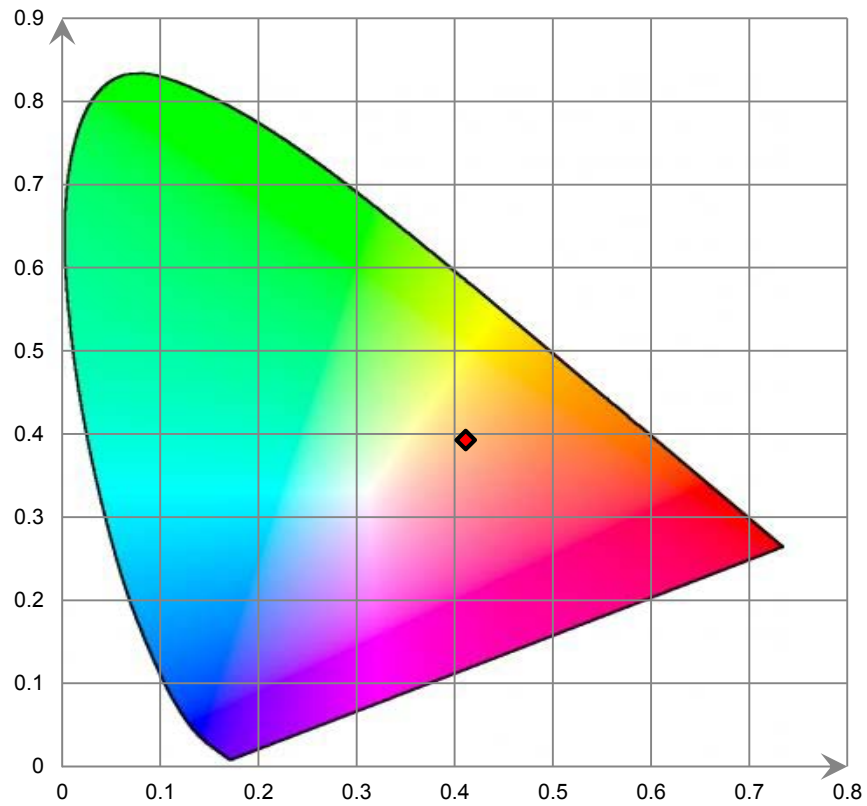
CIE 13.3-1995
(CRI)
 R_1 83
 R_9 9

Colors are for visual orientation purposes only. Created with the ANSI/IES TM-30-18 Calculator Version 2.00.

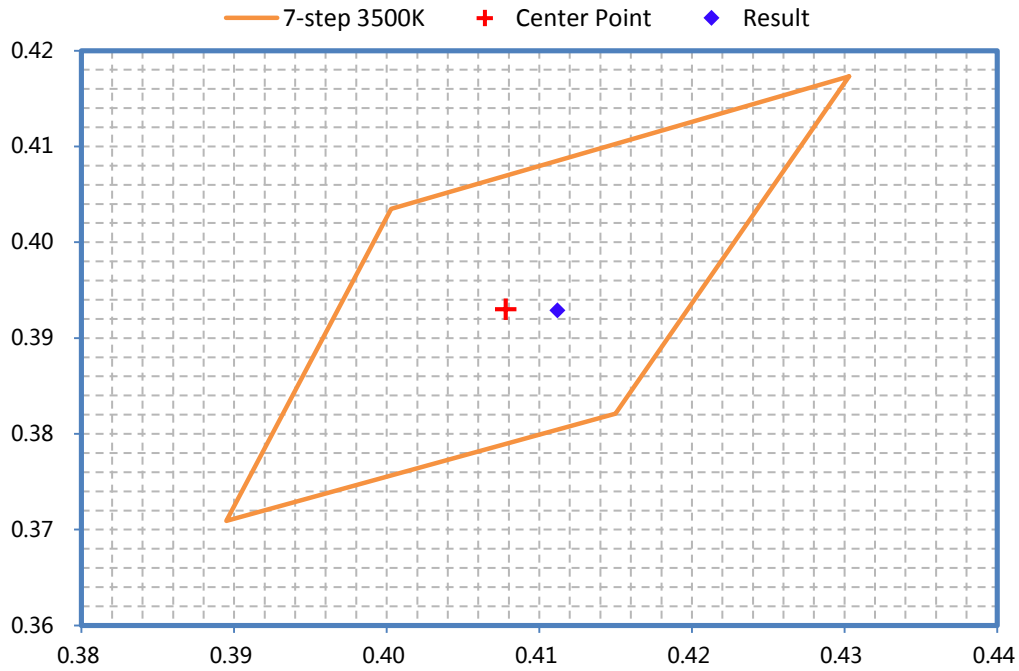
Relative Spectral Power Distribution



CIE 1931 x y Chromaticity Diagram



ANSI C78.377-2017 Chromaticity Quadrangles



Test Model: 55755-40K
Control setting: 40W

Integrating Sphere Test; Orientation: Downward; Test Voltage: 120V 60Hz:

Test Item	Test Result	DLC Requirements	DLC Requirements(With tolerances only)	Conclusion
Light Output(lm)	5191.87	≥2000	≥1800	Pass
Power(W)	40.47	None.	None.	N/A
Total Efficacy(lm/W)	128.29	≥110	≥106.7	Pass
CCT(K)	4028	None ⁱ	None.	N/A
Duv	0.00041	None ⁱ	None.	N/A
IES R _f	85	70	69	Pass
IES R _g	97	89	88	
IES Rcs,h1	-11%	-12%~23%	-13%~24%	
R _a	83.9	≥80	≥79	
R ₉	14	≥0	≥-1	

Note:

- i. White-tunable products are not required to meet the chromaticity requirements in DLC V5.1.

THDi, PF Test; Orientation: Downward:

Test Voltage	Test Item	Test Result	DLC Requirements	DLC Requirements(With tolerances and/or allowances)	Conclusion
120	Power Factor	0.9922	≥0.9	≥0.87	Pass
120	THDi	6.83%	≤20%	≤25%	Pass
277	Power Factor	0.9538	≥0.9	≥0.87	Pass
277	THDi	11.29%	≤20%	≤25%	Pass

Note:

1. The test results were measured directly from the test equipment.
2. The DLC requirements were listed according to DLC Technical Requirements V5.1.
3. The conclusion is for reference only. Test report that indicate product performance meets DLC Technical Requirements do not represent official DLC product qualification. All decisions regarding product qualification are made by the DLC.

Test Data

[Integrating Sphere System]

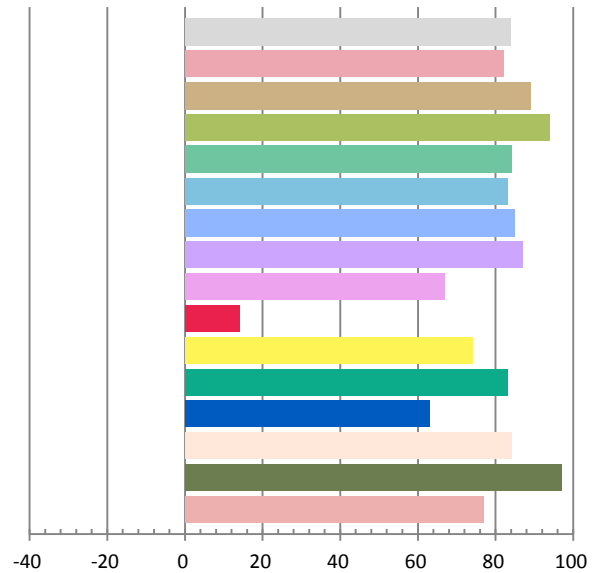
Photometric and Electrical Measurement Result

Voltage (V)	Frequency (Hz)	Current (A)	Power (W)	Power Factor	Luminous Flux(lm)	Efficacy (lm/W)
120.0	60	0.3398	40.47	0.9925	5191.87	128.29

Radiant Flux (W)	CCT (K)	Duv	x	y	u'	v'
15.704	4028	0.00041	0.3795	0.3771	0.2244	0.5016

Color Rendering Index

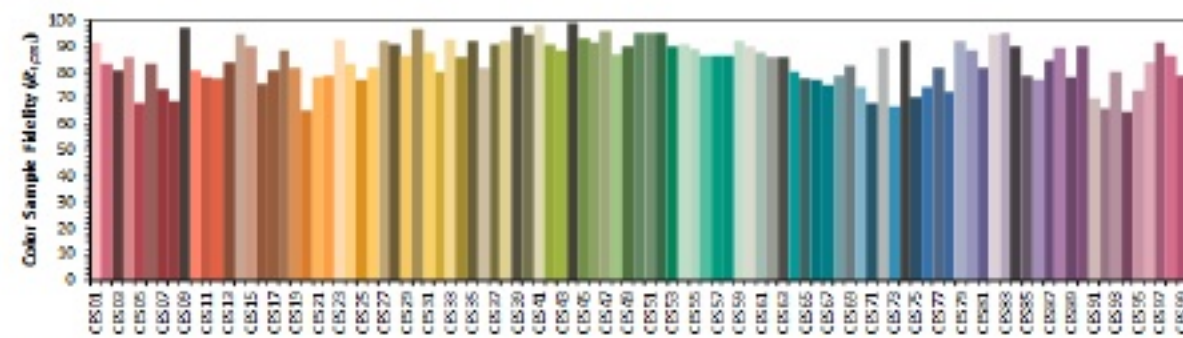
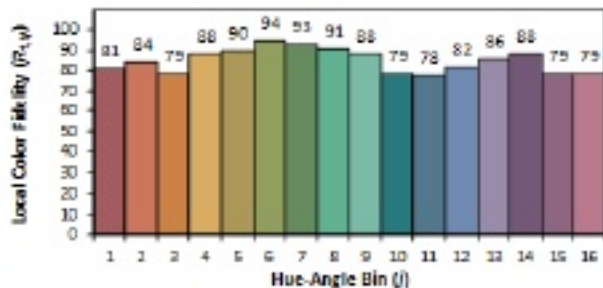
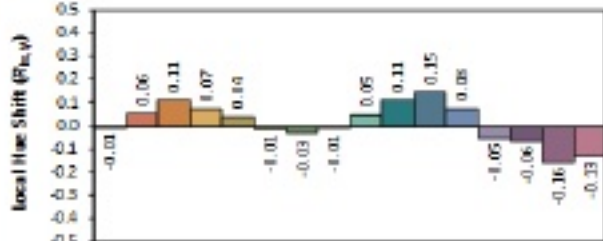
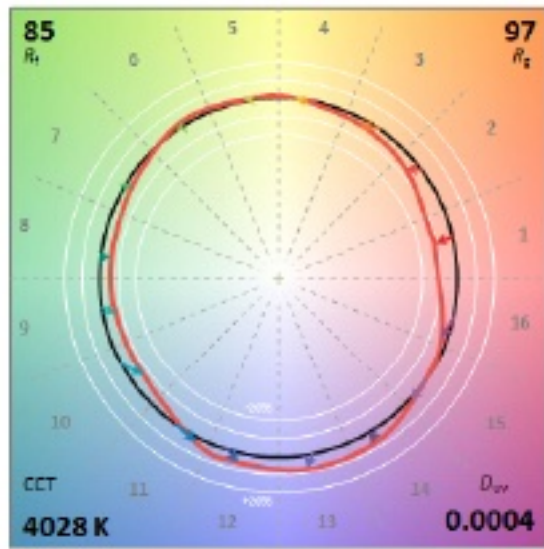
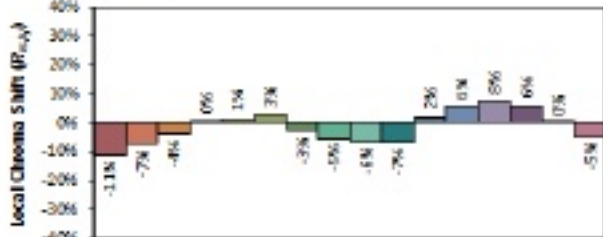
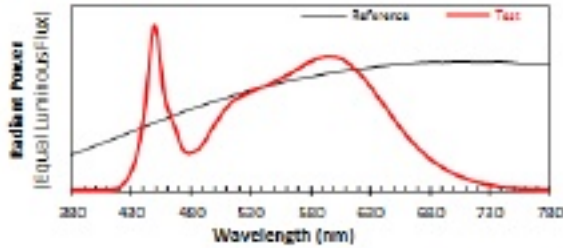
Ra			
83.9			
R1	R2	R3	R4
82	89	94	84
R5	R6	R7	R8
83	85	87	67
R9	R10	R11	R12
14	74	83	63
R13	R14	R15	
84	97	77	



ANSI/IES TM-30-18 Color Rendition Report

Source: User SPD
 Date: 2022/10/29

Manufacturer: P.Q.L., Inc.
 Model: 55755-40W-40W

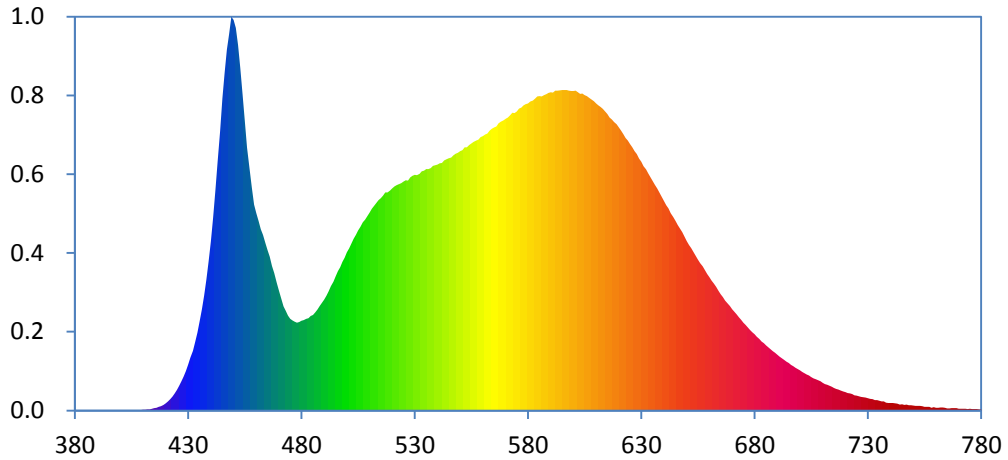


Notes: This is a recommended method for displaying ANSI/IES TM-30-18 information.

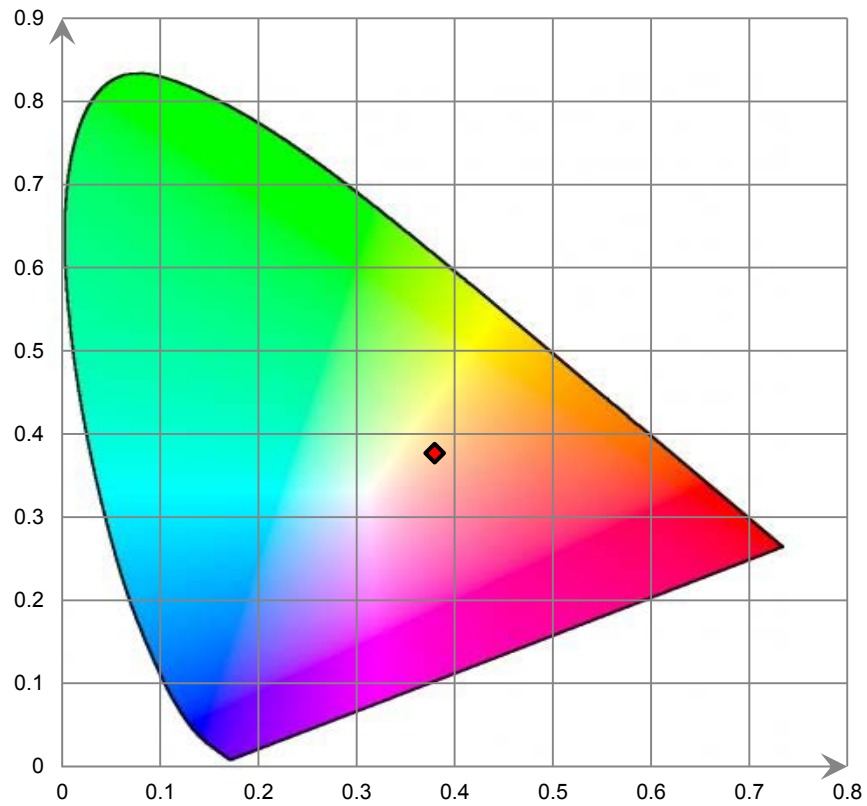
x	0.3796	CIE 13.3-1995 (CRI) R_A 84 R_9 14
y	0.3770	
u'	0.2244	
v'	0.5016	

Colors are for visual orientation purposes only. Created with the ANSI/IES TM-30-18 Calculator Version 2.00.

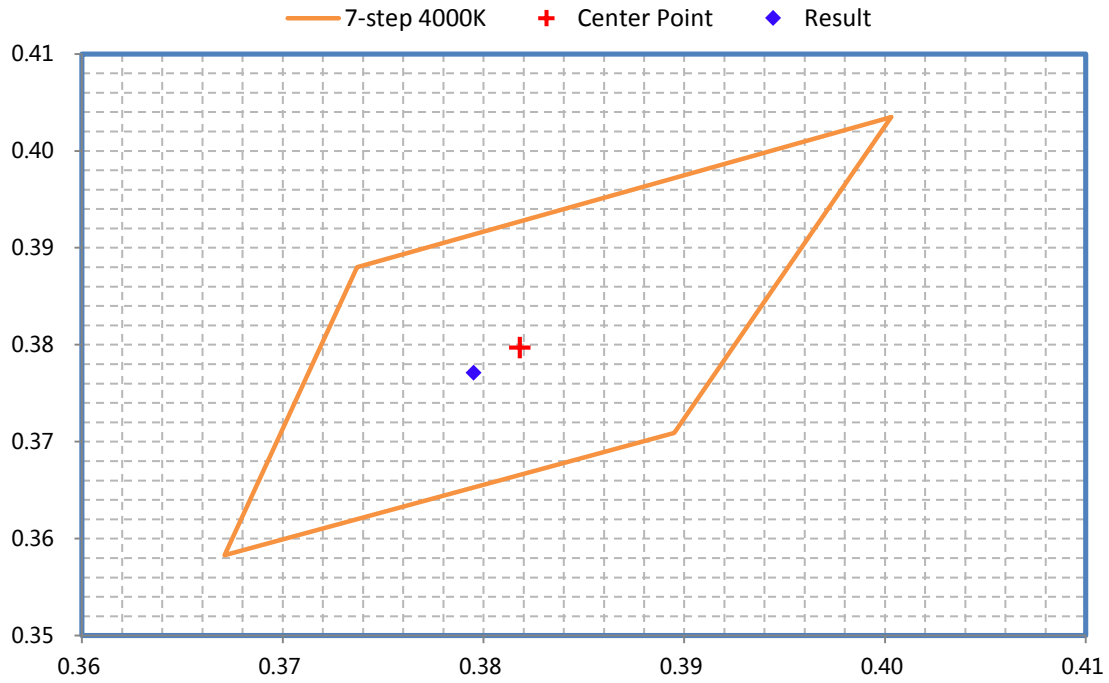
Relative Spectral Power Distribution



CIE 1931 x y Chromaticity Diagram



ANSI C78.377-2017 Chromaticity Quadrangles



Test Model: 55755-50K
Control setting: 40W

Integrating Sphere Test; Orientation: Downward; Test Voltage: 120V 60Hz;

Test Item	Test Result	DLC Requirements	DLC Requirements(With tolerances only)	Conclusion
Light Output(lm)	4781.5	≥2000	≥1800	Pass
Power(W)	42.63	None.	None.	N/A
Total Efficacy(lm/W)	112.16	≥110	≥106.7	Pass
CCT(K)	4883	None ⁱ	None.	N/A
Duv	0.00352	None ⁱ	None.	N/A
IES R _f	84	70	69	Pass
IES R _g	97	89	88	
IES Rcs,h1	-12%	-12%~23%	-13%~24%	
R _a	82.4	≥80	≥79	
R ₉	6	≥0	≥-1	

Note:

- i. White-tunable products are not required to meet the chromaticity requirements in DLC V5.1.

Goniophotometer Test; Orientation: Downward; Test Voltage: 120V 60Hz;

Test Item	Test Result	DLC Requirements	DLC Requirements(With tolerances only)	Conclusion
Light Output(lm)	4790.3	≥2000	≥1800	Pass
Power(W)	42.69	None.	None.	N/A
Total Efficacy(lm/W)	112.26	≥110	≥106.7	Pass
Zonal Lumen Distribution(0-60°)	78.53%	0-60°≥75%	0-60°≥72%	Pass
SC:0-180°	1.27	1.0≤SC≤2.0	0.9≤SC≤2.1	Pass
SC:90-270°	1.27	1.0≤SC≤2.0	0.9≤SC≤2.1	Pass

Goniophotometer THDi、PF Test; Orientation: Downward;

Test Voltage	Test Item	Test Result	DLC Requirements	DLC Requirements(With tolerances and/or allowances)	Conclusion
120	Power Factor	0.9954	≥0.9	≥0.87	Pass
120	THDi	7.14%	≤20%	≤25%	Pass
277	Power Factor	0.9645	≥0.9	≥0.87	Pass
277	THDi	10.93%	≤20%	≤25%	Pass

Integrating Sphere THDi、PF Test; Orientation: Downward;

Test Voltage	Test Item	Test Result	DLC Requirements	DLC Requirements(With tolerances and/or allowances)	Conclusion
120	Power Factor	0.9923	≥0.9	≥0.87	Pass
120	THDi	7.17%	≤20%	≤25%	Pass
277	Power Factor	0.9571	≥0.9	≥0.87	Pass
277	THDi	10.85%	≤20%	≤25%	Pass

Note:

- The test results were measured directly from the test equipment.
- The DLC requirements were listed according to DLC Technical Requirements V5.1.
- The conclusion is for reference only. Test report that indicate product performance meets DLC Technical Requirements do not represent official DLC product qualification. All decisions regarding product qualification are made by the DLC.

Test Data

[Integrating Sphere System]

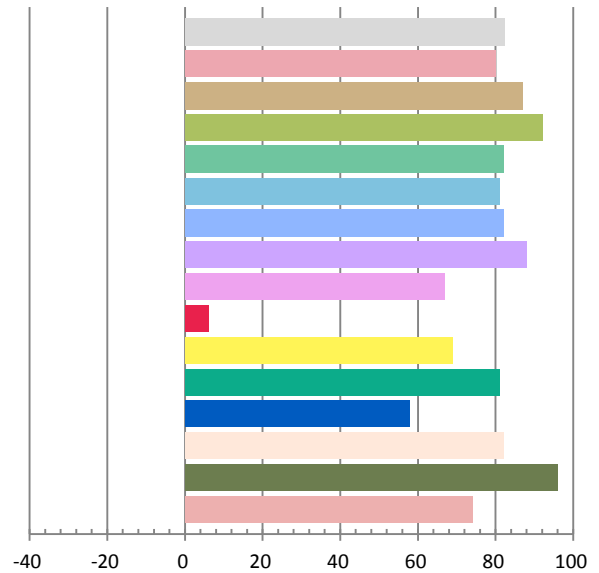
Photometric and Electrical Measurement Result

Voltage (V)	Frequency (Hz)	Current (A)	Power (W)	Power Factor	Luminous Flux(lm)	Efficacy (lm/W)
120.0	60	0.358	42.63	0.9923	4781.5	112.16

Radiant Flux (W)	CCT (K)	Duv	x	y	u'	v'
14.576	4883	0.00352	0.3493	0.3621	0.2102	0.4903

Color Rendering Index

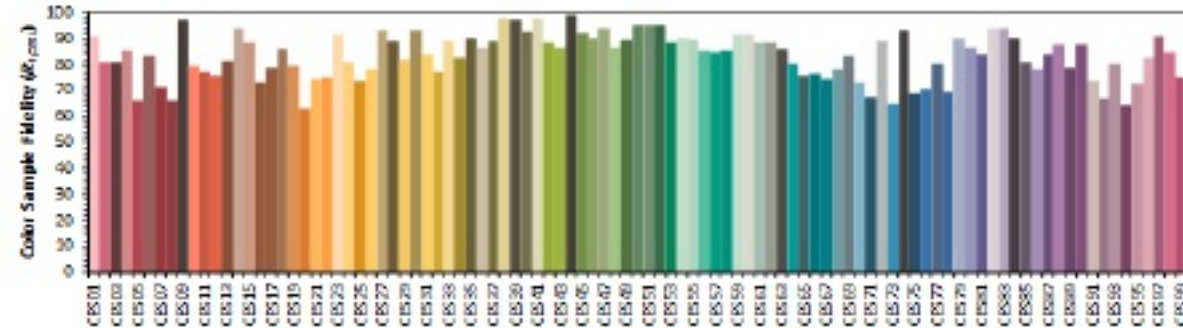
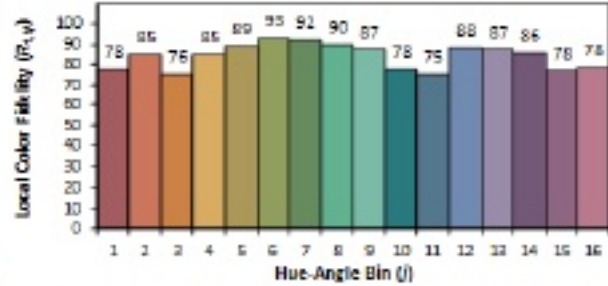
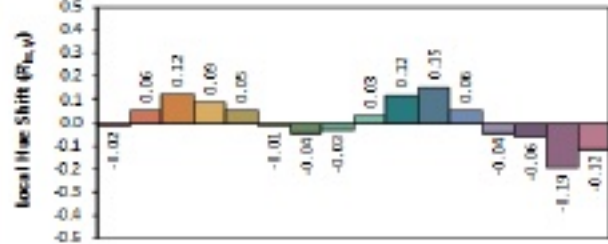
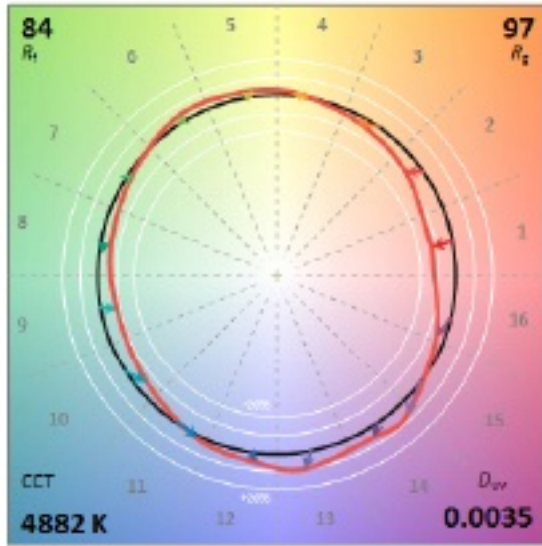
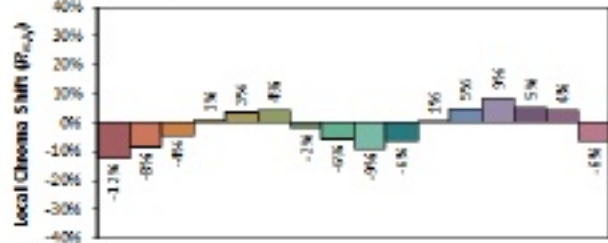
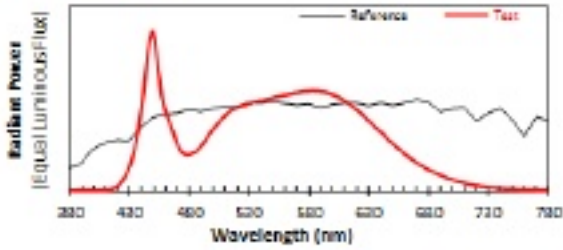
Ra			
82.4			
R1	R2	R3	R4
80	87	92	82
R5	R6	R7	R8
81	82	88	67
R9	R10	R11	R12
6	69	81	58
R13	R14	R15	
82	96	74	



ANSI/IES TM-30-18 Color Rendition Report

Source: User SPD
Date: 2022/10/29

Manufacturer: P.Q.L., Inc.
Model: 55755-40W-50w



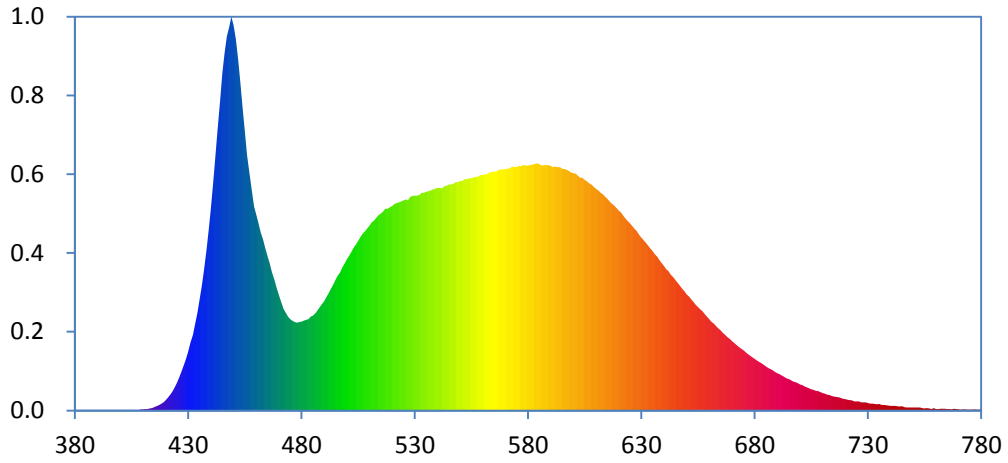
Notes: This is a recommended method for displaying ANSI/IES TM-30-18 information.

x 0.3493
 y 0.3621
 u' 0.2102
 v' 0.4903

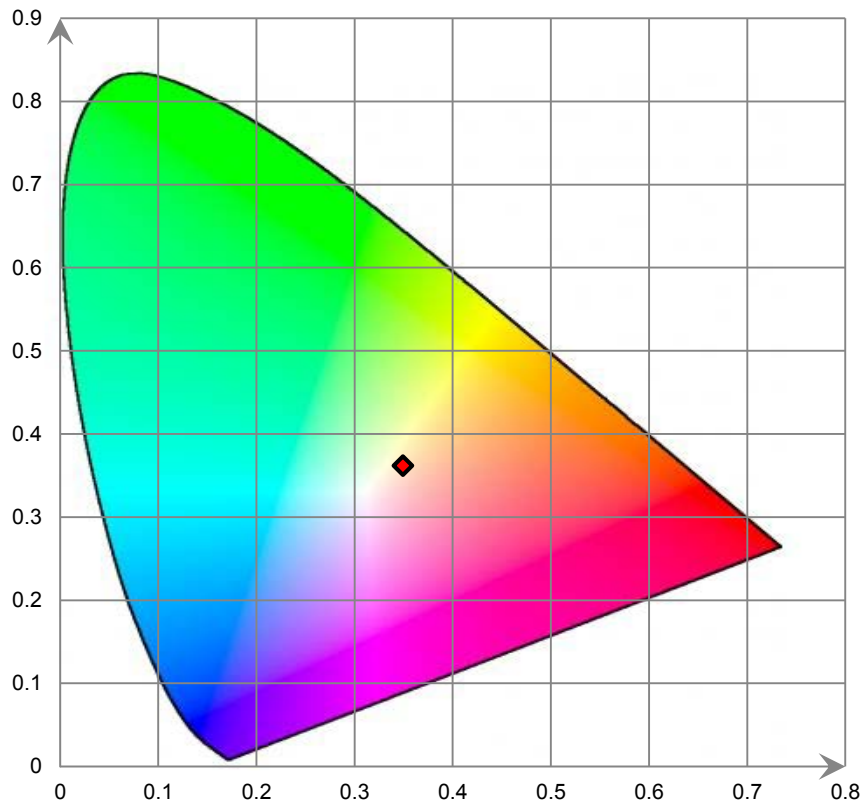
CIE 13.3-1995
(CRI)
 R_a 82
 R_g 4

Colors are for visual orientation purposes only. Created with the ANSI/IES TM-30-18 Calculator Version 2.00.

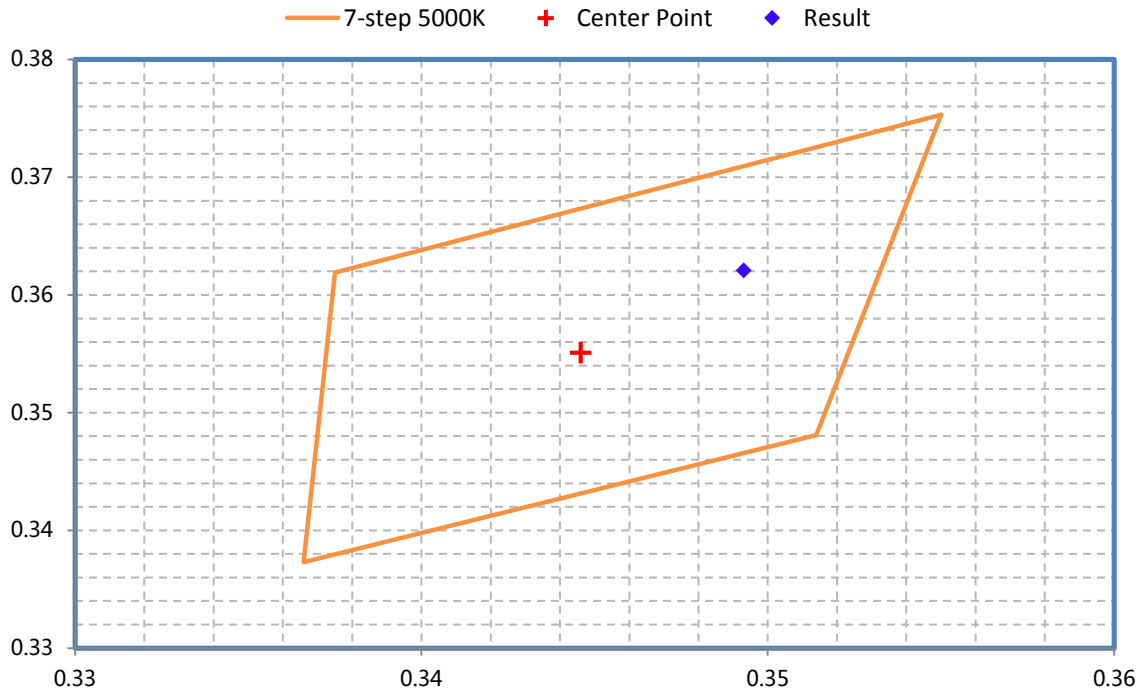
Relative Spectral Power Distribution



CIE 1931 x y Chromaticity Diagram



ANSI C78.377-2017 Chromaticity Quadrangles



[Goniophotometer System]

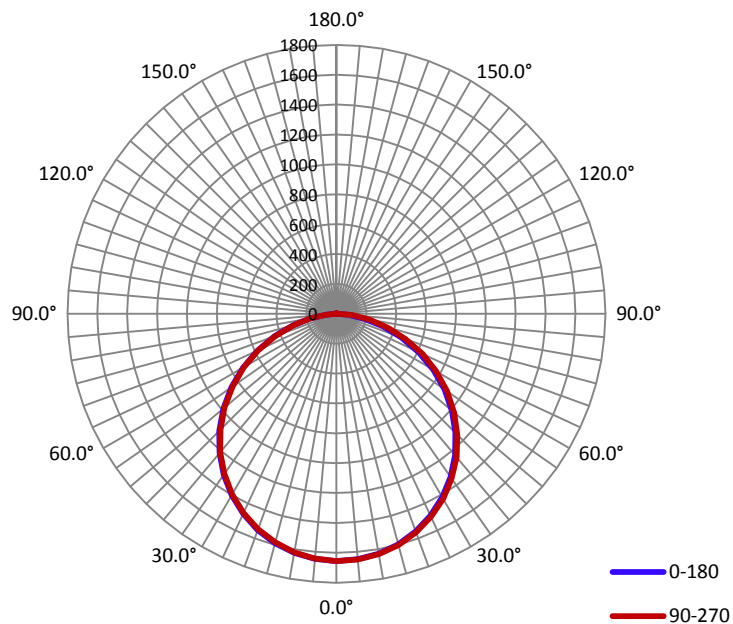
Electrical Measurement

Input Voltage (V)	Frequency (Hz)	Input Current (A)	Power (W)	Power Factor
120.0	60	0.357	42.69	0.995

Photometric Measurement

Luminous Flux (lm)	Efficacy (lm/W)	I _{max} (cd)	S/MH (C0/180)	S/MH (C90/270)
4790.3	112.26	1654.9	1.27	1.27

Luminous Intensity Distribution



	C0/180	C45/225	C90/270	C135/315	AVG.
Beam Angle (50% I _{max}):	113.3	113.5	113.8	113.5	113.5
Field Angle (10% I _{max}):	161.4	162.1	162.9	162.3	162.2

Luminous Intensity (cd) Distribution Data

$\begin{matrix} C \\ \backslash \\ Y \end{matrix}$	0°	22.5°	45°	67.5°	90°	112.5°	135°	157.5°
0.0°	1654.3	1654.3	1654.3	1654.3	1654.3	1654.3	1654.3	1654.3
5.0°	1649.2	1649.8	1649.6	1650.9	1650.4	1650.2	1649.7	1648.6
10.0°	1629.8	1631.5	1631.8	1632.8	1633.1	1632.2	1630.6	1629.7
15.0°	1597.2	1598.5	1600.5	1601.9	1603.0	1601.2	1598.9	1596.2
20.0°	1549.3	1553.4	1555.5	1556.5	1557.3	1555.9	1553.3	1549.4
25.0°	1489.7	1493.5	1496.8	1498.7	1498.3	1496.5	1494.7	1489.8
30.0°	1417.3	1422.4	1425.4	1427.6	1428.3	1425.6	1422.2	1417.3
35.0°	1331.8	1337.8	1341.6	1344.6	1345.3	1342.9	1338.2	1331.5
40.0°	1236.0	1241.7	1245.4	1251.0	1251.0	1246.9	1241.5	1236.7
45.0°	1126.9	1134.6	1139.6	1143.1	1143.1	1141.6	1134.8	1127.8
50.0°	1008.8	1015.6	1022.7	1027.4	1027.5	1022.9	1018.1	1010.5
55.0°	882.5	889.4	897.3	902.3	903.3	898.2	892.1	884.0
60.0°	747.7	755.0	761.1	769.6	771.0	765.8	759.1	749.2
65.0°	607.9	615.5	623.1	632.6	634.5	629.1	619.0	610.9
70.0°	462.6	470.8	482.7	490.4	492.5	487.4	479.9	467.3
75.0°	321.8	330.8	343.4	351.6	354.3	349.6	342.0	328.7
80.0°	191.0	199.1	212.1	220.6	222.9	220.1	212.1	199.5
85.0°	80.1	86.9	95.2	103.9	106.8	104.0	95.6	88.3
90.0°	0.0	0.0	3.2	6.3	7.3	4.4	3.0	0.0
95.0°	0.0	0.0	0.0	0.0	0.0	0.0	0.0	0.0
100.0°	0.0	0.0	0.0	0.0	0.0	0.0	0.0	0.0
105.0°	0.0	0.0	0.0	0.0	0.0	0.0	0.0	0.0
110.0°	0.0	0.0	0.0	0.0	0.0	0.0	0.0	0.0
115.0°	0.0	0.0	0.0	0.0	0.0	0.0	0.0	0.0
120.0°	0.0	0.0	0.0	0.0	0.0	0.0	0.0	0.0
125.0°	0.0	0.0	0.0	0.0	0.0	0.0	0.0	0.0
130.0°	0.0	0.0	0.0	0.0	0.0	0.0	0.0	0.0
135.0°	0.0	0.0	0.0	0.0	0.0	0.0	0.0	0.0
140.0°	0.0	0.0	0.9	1.0	1.0	0.8	1.2	1.2
145.0°	1.0	1.3	1.9	1.7	1.8	1.6	1.9	2.0
150.0°	1.2	2.2	2.6	2.6	2.4	2.3	2.4	2.8
155.0°	2.2	2.9	3.0	2.8	3.1	3.3	2.9	3.0
160.0°	2.7	3.2	3.3	2.9	3.1	3.2	3.5	3.2
165.0°	2.8	3.2	3.6	3.9	3.6	3.2	3.5	3.3
170.0°	3.4	3.6	3.8	3.9	4.0	4.0	4.3	4.1
175.0°	3.6	4.0	4.3	4.2	4.5	4.2	4.5	4.7
180.0°	0.0	0.0	0.0	0.0	0.0	0.0	0.0	0.0

Luminous Intensity (cd) Distribution Data (cont.)

$\begin{matrix} C \\ \backslash \\ \gamma \end{matrix}$	180°	202.5°	225°	247.5°	270°	292.5°	315°	337.5°
0.0°	1654.3	1654.3	1654.3	1654.3	1654.3	1654.3	1654.3	1654.3
5.0°	1645.9	1645.5	1644.1	1644.6	1644.8	1644.9	1645.5	1646.4
10.0°	1624.0	1622.6	1620.9	1621.6	1621.4	1621.8	1623.1	1624.4
15.0°	1588.4	1585.9	1584.4	1585.2	1583.7	1585.0	1586.9	1589.0
20.0°	1539.5	1535.8	1534.2	1534.9	1534.3	1535.4	1537.2	1540.4
25.0°	1476.6	1472.9	1471.3	1470.7	1471.6	1472.6	1475.3	1476.9
30.0°	1400.7	1397.8	1395.6	1395.8	1394.9	1396.7	1399.4	1401.9
35.0°	1314.4	1310.7	1307.7	1306.7	1307.9	1310.0	1310.8	1315.5
40.0°	1217.1	1212.2	1207.1	1207.6	1209.4	1211.2	1212.1	1217.2
45.0°	1108.3	1100.6	1097.1	1098.2	1097.9	1098.7	1102.2	1107.8
50.0°	987.0	981.1	977.4	978.8	978.1	978.9	982.5	986.2
55.0°	856.9	850.1	847.5	845.8	847.4	850.1	853.5	857.4
60.0°	722.7	716.6	712.1	714.3	715.6	717.7	717.7	723.0
65.0°	581.7	576.5	572.7	575.0	577.2	579.4	578.5	582.4
70.0°	440.3	433.2	433.1	436.5	436.3	438.4	439.4	441.9
75.0°	299.6	296.3	298.0	301.7	301.6	303.1	303.4	301.2
80.0°	174.1	171.0	171.0	174.9	177.4	178.5	175.9	175.3
85.0°	68.1	64.8	65.1	64.9	66.2	67.2	67.7	66.3
90.0°	0.0	0.0	0.0	0.0	0.0	0.0	0.0	0.0
95.0°	0.0	0.0	0.0	0.0	0.0	0.0	0.0	0.0
100.0°	0.0	0.0	0.0	0.0	0.0	0.0	0.0	0.0
105.0°	0.0	0.0	0.0	0.0	0.0	0.0	0.0	0.0
110.0°	0.0	0.0	0.0	0.0	0.0	0.0	0.0	0.0
115.0°	0.0	0.0	0.0	0.0	0.0	0.0	0.0	0.0
120.0°	0.0	0.0	0.0	0.0	0.0	0.0	0.0	0.0
125.0°	0.0	0.0	0.0	0.0	0.0	0.0	0.0	0.0
130.0°	0.0	0.0	0.0	0.0	0.0	0.0	0.0	0.0
135.0°	0.0	0.0	0.0	0.0	0.0	0.0	0.0	0.0
140.0°	0.0	0.0	0.0	0.9	0.9	0.0	0.0	0.0
145.0°	0.0	0.0	1.1	1.5	1.8	1.0	0.0	1.4
150.0°	1.0	1.4	1.9	2.0	2.3	1.9	1.9	1.8
155.0°	1.4	1.9	2.3	2.6	2.5	2.5	2.8	2.5
160.0°	1.8	2.2	2.9	2.9	3.0	3.2	2.8	3.2
165.0°	2.4	2.6	3.0	3.3	3.6	3.6	3.5	3.6
170.0°	2.9	3.0	3.9	4.3	3.9	4.4	4.4	4.2
175.0°	3.4	3.7	4.1	4.4	4.3	4.4	4.2	4.4
180.0°	0.0	0.0	0.0	0.0	0.0	0.0	0.0	0.0

6. Description of Test Equipment

Device	Manufacture	Model No	Serial No	Calibration date	Calibration due date
Integrating Sphere	INVENTFINE	Dia 1.5m	JWWCV090112	2022-06-21	2023-06-20
Power Meter	INVENTFINE	WT500	GSJWQ20009	2021-11-15	2022-11-14
Spectral photometer	INVENTFINE	CMS-3S	GSGSE100017	2022-06-21	2023-06-20
AC Power Supply	INVENTFINE	CHP500	JWJSD010071	2022-06-21	2023-06-20
Standard Light Source	Osram	24V/50W	JWWCR020104	2021-09-15	2023-09-14
Thermal Meter	ANYMETRE	TH-20E	N/A	2021-12-01	2022-11-30
DC Power Supply	INVENTFINE	WL3005	JWWCP020069	2022-06-21	2023-06-20
AC Power Supply	INVENTFINE	CHP-5KVA	900511765	2022-06-21	2023-06-20
DC Power Supply	INVENTFINE	WL3010	JWDMP030001	2022-06-21	2023-06-20
Power Meter	INVENTFINE	WT500	GSDSQ200007	2021-11-15	2022-11-14
Goniophotometer	INVENTFINE	GPM-1900	YWGCF120001	2021-11-15	2022-11-14
Wireless Weather Station	ZHONGXING	KG218	N/A	2022-06-21	2023-06-20
Standard Light Source	INVENTFINE	N/A	JWBYR040008	2021-12-23	2023-12-22
Digital Multimeter	FLUKE	115C	37840512WS	2022-06-22	2023-06-21
Hybrid Recorder	YOKOGAWA	DR230	47JH0903	2022-06-22	2023-06-21
Power Supply	SC	SC/BP-11003	1608110030553	2022-06-21	2023-06-20

Statement of Traceability: Bay Area Compliance Laboratories Corp. (Kunshan) attested that all calibration has been performed using suitable standards traceable to National Primary Standards and International System of Units (SI).

7. Test Method

Product was tested with no seasoning. All stabilization and measurements were made in compliance with IES LM-79-08. The ambient temperature of the sample was maintained at 25°C±1°C during measurement. And relative humidity is less than 65%. The product was operated in its intended orientation in application during all testing.

Integrating Sphere System

The system includes AC power source, digital power meter, DC power supply, Spectroradiometer, and integrating sphere. The integrating sphere system is calibrated by standard spectrum light source before measurement. 4π geometry was used during measurement.

Goniophotometer System

Type C goniophotometer was used for measuring luminous intensity distribution. The vertical angle (γ) test intervals were set no more than 1 degree while data for 5 degree intervals is reported. The horizontal angle (C plane) test intervals were set no more than 22.5 degree.

ISTMT Test

The LED which has the highest temperature was measured at the location of LED case which is specified by LED source manufacturer and detailed by LM-80 report. The drive current of LED package/module/ array was calculated as the total output current of the driver measured by multimeter, divided by the number of branches in parallel of LEDs.

Directions

1. The information marked "superscript #" is provided by the applicant, the laboratory is not responsible for its authenticity and this information can affect the validity of the result in the test report.
2. This report may contain data that are not covered by the accreditation scope and shall be marked with an asterisk "★"
3. Unless otherwise stated the results shown in this test report refer only to the sample(s) tested.
4. Otherwise required by the applicant or Product Regulations, Decision Rule in this report did not consider the uncertainty.
5. The extended uncertainty given in this report is obtained by combining the standard uncertainty times the coverage factor K with the 95% confidence interval.
6. This report cannot be reproduced except in full, without prior written approval of the Company.
7. This report is valid only with a valid digital signature. The digital signature may be available only under the Adobe software above version 7.0.

*****END OF REPORT*****