



PREMIUM QUALITY LIGHTING

# 83136 / 83137 / 83138

## LED WALL PACK INSTALL INSTRUCTIONS



### SPECIFICATIONS

ITEM#	DESCRIPTION	WATT	COLOR	LUMENS	CRI	VOLT	HOURS	CASE
83136	LED SMALL WALL PACK 36W/57K/120-277V- SUPERIOR LIFE® DLC	36	5700K	3400	75	120-277V	70,000	1
83137	LED MEDIUM WALL PACK 68W/57K/120-277V- SUPERIOR LIFE® DLC	68	5700K	4800	80	120-277V	70,000	1
83138	LED LARGE WALL PACK 100W/57K/120-277V- SUPERIOR LIFE® DLC	100	5700K	7262	70	120-277V	70,000	1



Please check DLC website for the most current list of approved items • [www.designlights.org](http://www.designlights.org)  
Published lumens on LED products are approximate and may vary slightly.

### WARNING

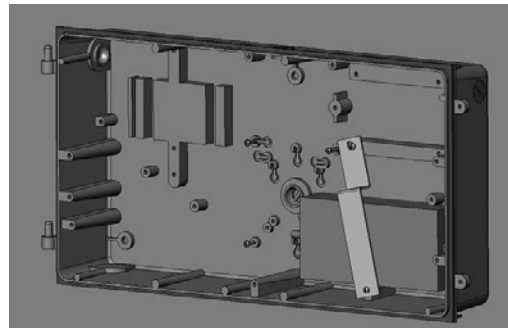
Ensure power is off before starting installation, wiring or attempting any maintenance should be performed by a person familiar with the construction and operation of the product and hazards involved to ensure personal safety.

All work should be performed by a qualified electrician.

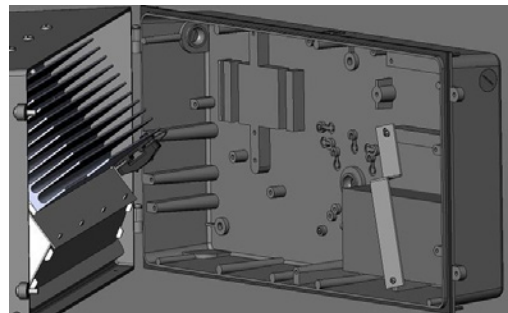
The ceiling should have the enough strength for installing the fixture; Its endurance must be more than the weight of fixture.

### INSTALLATION

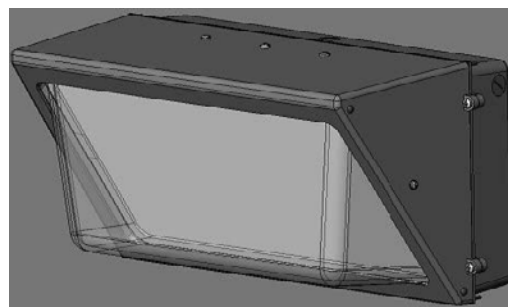
1. Cut off the main power.
2. Open the cover.
3. Mount the base to the wall by screws. (Dia.1) Use conduit to connect with branch circuit in accordance with NEC rule, connect the input to supply leads with wire nuts inside the body.
4. Connect the left side of the cover to the hinges on the base and open from the right side. Connect the output lines; that is: Line (L) connect to Line(L), neutral (N) to neutral (N), earth (E) to earth (E), connect these wires with wire nuts tightly. (Dia.2)
5. Assemble and lock the cover to base tightly with screws.
6. After installation, be sure the mounting surface was sealed by silicone sealant or equivalent means.



**Dia. 1:**  
Mount base to wall.



**Dia. 2:**  
Attach cover and connect output lines.



**Dia. 3:**  
Tighten screws on surface