

FEATURES



Outdoor Pole/Arm-Mounted Area and Roadway Luminaires

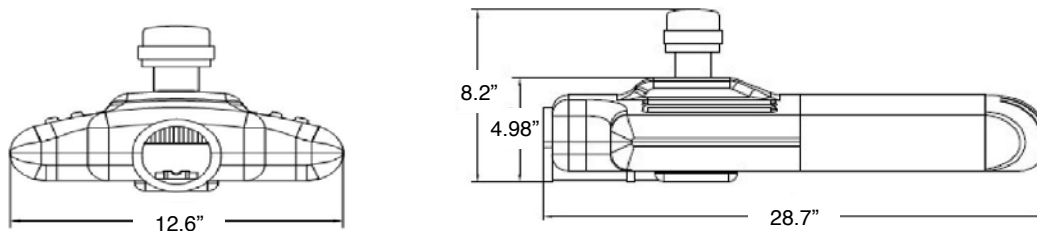
- Energy efficient
- High lumen output
- The gap between each LED bar allows the cold air in and hot air out the top of LED street light; extended LED chip life.
- 3D vibration, anti-salt and fog
- Arched design minimizes dirt from staying on the top of street light; cleaning recommended every 6 month
- Instant-On
- Lifespan of 50,000 hours at 70% lumen maintenance rated life
- Lamp body is aluminum alloy; anti-corrosion, rust free.
- IP Grade: IP65

SPECIFICATIONS

Power Consumption	120W
Input Voltage	110-277V
Power Factor	0.9
Lumens	10800
Luminous Efficiency	90 Lm/W
Color Temperature	4500K
CRI	75
Beam Angle	120°
Housing	Aluminum Alloy
Finish	Bronze
Dimensions (Inches)	28.7"(L) x 12.6"(W) x 5"(H)
Net Weight	19.6 lbs
LED	
LED Driver	Meanwell HLG-120H-15A
LED Type	CREE
LED Quantity	20
LIFESPAN & ENVIRONMENT	
Average Life	50,000
Operating Temperature	-35°C ~ 50°C



DIMENSIONS



ORDERING

ITEM#	DESCRIPTION	WATTS	COLOR	LUMENS	CRI	VOLTS	HOUSING	HOURS	CASE
83183	LED AREA LIGHT 120W/110-277V/4500K/BRONZE	120	4500K	10800	75	110-277	BRONZE	50,000	1

Published lumens on LED products are approximate and may vary slightly.