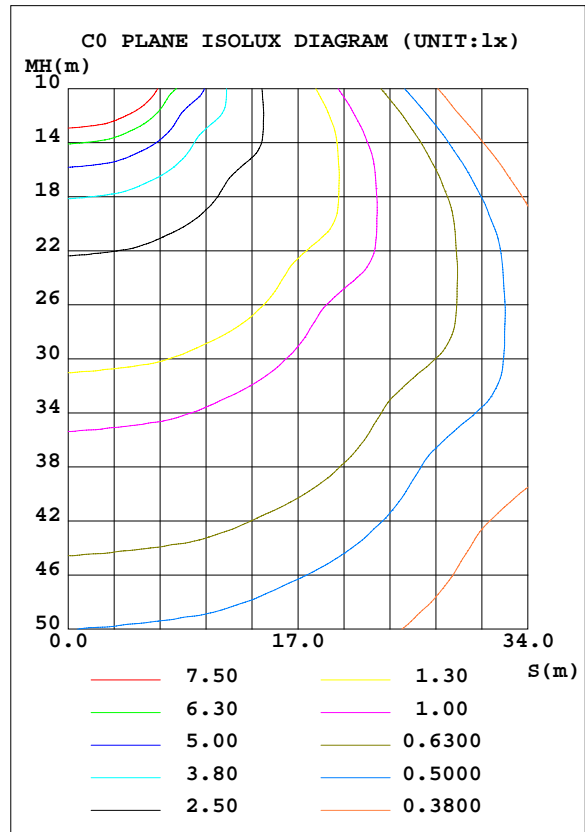
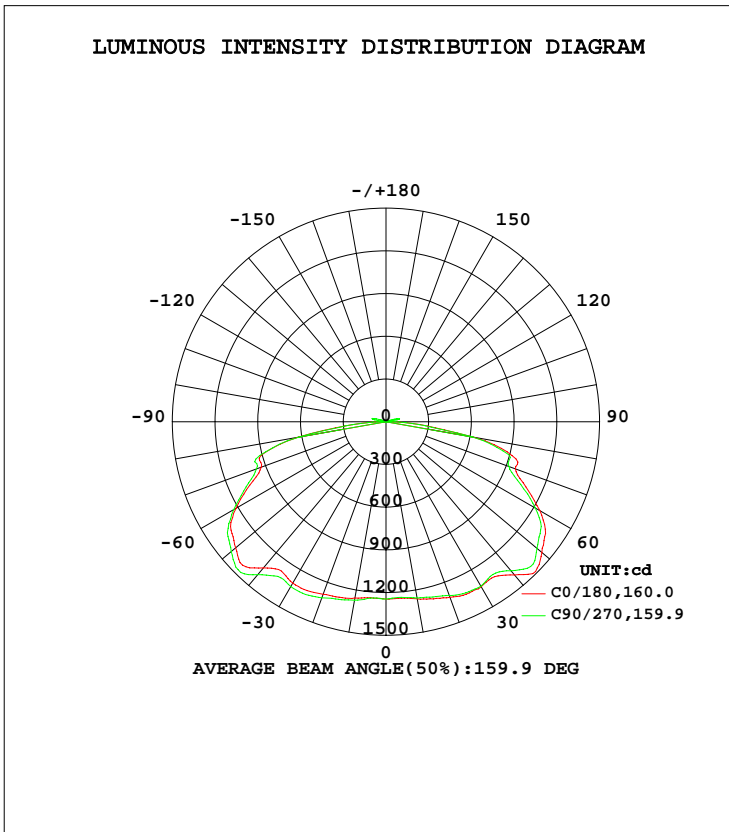


LUMINAIRE PHOTOMETRIC TEST REPORT

Test:U:120.0V I:0.5358A P:63.93W PF:0.9939 Lamp Flux:6546.7x1 lm		
NAME: 83232, 83233	TYPE:N/A	WEIGHT:N/A
SPEC.:N/A	DIM.: N/A	SERIAL No.:N/A
MFR.: P.Q.L., Inc.	SUR.:N/A	Shielding Angle:N/A

DATA OF LAMP		PHOTOMETRIC DATA Eff: 102.40 lm/W			
MODEL	83232, 83233	I _{max} (cd)	1501	S/MH(C0/180)	1.71
NOMINAL POWER(W)	65	LOR(%)	100.0	S/MH(C90/270)	1.65
RATED VOLTAGE(V)	120	TOTAL FLUX(lm)	6546.7	η UP, DN(C0-180)	0.5,49.7
NOMINAL FLUX(lm)	6546.7	CIE CLASS	DIRECT	η UP, DN(C180-360)	0.5,49.3
LAMPS INSIDE	1	η up(%)	1.0	CIBSE SHR NOM	1.75
TEST VOLTAGE(V)	120	η down(%)	99.0	CIBSE SHR MAX	1.75



C Range: 0 - 360DEG
 C Interval: 22.5DEG
 Test Speed: 10.0deg/s
 Temperature:25.5DEG
 Operators:BEN
 Test Date:2016-06-02

γ Range: 0 - 180DEG
 γ Interval: 1.0DEG
 Test System:EVERFINE GO-R5000_V2 SYSTEM V2.0.351
 Humidity:49%
 Test Distance:2.437m [K=1.0000]
 Remarks:

ZONAL FLUX DIAGRAM

ZONAL FLUX DIAGRAM:

γ	C0	C45	C90	C135	C180	C225	C270	C315	γ	Φ zone	Φ total	%lum,lamp
10	1256	1261	1273	1272	1263	1258	1257	1253	0- 10	119.2	119.2	1.82,1.82
20	1289	1300	1316	1320	1312	1306	1299	1289	10- 20	364.2	483.4	7.38,7.38
30	1309	1316	1337	1339	1337	1332	1333	1317	20- 30	612.6	1096	16.7,16.7
40	1339	1366	1402	1427	1405	1383	1367	1338	30- 40	833.8	1930	29.5,29.5
50	1378	1391	1419	1422	1429	1385	1384	1384	40- 50	1107	3037	46.4,46.4
60	1215	1223	1235	1241	1247	1208	1210	1218	50- 60	1193	4230	64.6,64.6
70	932.1	952.6	967.3	979.2	966.2	949.8	920.3	938.3	60- 70	1062	5292	80.8,80.8
80	624.5	630.2	622.6	579.7	618.6	605.3	614.1	634.8	70- 80	906.6	6198	94.7,94.7
90	38.78	56.04	45.74	49.25	67.09	42.22	42.18	50.73	80- 90	284.4	6483	99,99
100	32.15	3.238	82.14	2.632	18.14	1.823	79.07	2.487	90-100	19.65	6503	99.3,99.3
110	5.917	4.844	40.90	4.893	0.8921	4.142	37.58	3.692	100-110	28.50	6531	99.8,99.8
120	1.151	3.134	13.87	3.080	1.071	2.762	12.38	2.519	110-120	7.378	6538	99.9,99.9
130	1.140	2.072	8.458	2.106	1.160	1.875	7.840	1.605	120-130	3.834	6542	99.9,99.9
140	1.330	1.493	4.658	1.592	1.216	1.310	3.738	1.300	130-140	2.177	6544	100,100
150	1.785	1.822	1.713	1.845	1.313	1.247	1.192	1.239	140-150	0.9350	6545	100,100
160	1.993	1.914	1.820	1.970	1.340	1.301	1.289	1.171	150-160	0.7282	6546	100,100
170	1.738	1.702	1.641	1.811	1.407	1.356	1.300	1.252	160-170	0.4463	6547	100,100
180	1.563	1.493	1.448	1.541	1.589	1.540	1.464	1.500	170-180	0.1461	6547	100,100
DEG	LUMINOUS INTENSITY:cd Less than 25% Percent = 6.5 %									UNIT:lm		

Conical surface Flux(90deg): 2457.7 lm

%lum = 37.5%
 %lamp = 37.5%

Conical surface Flux(120deg): 4230 lm

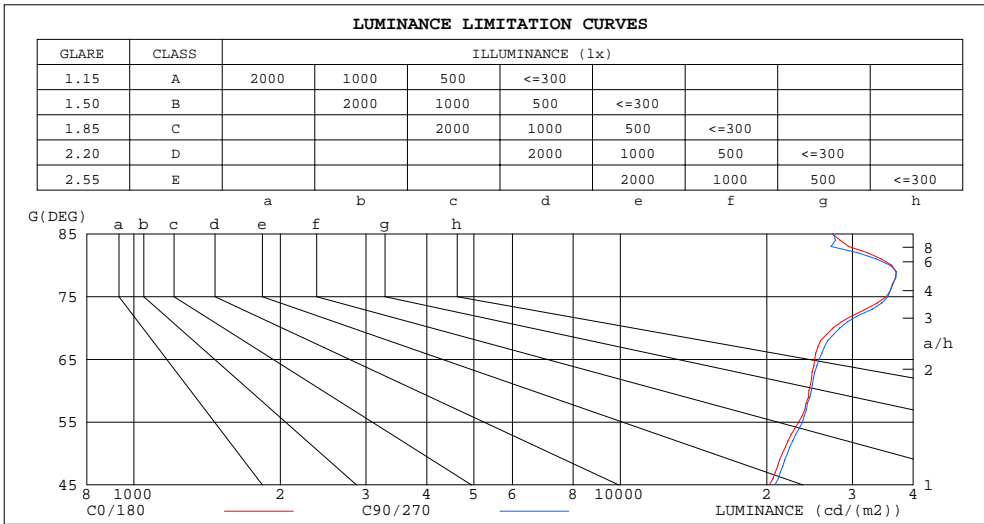
%lum = 64.6%
 %lamp = 64.6%

C Range: 0 - 360DEG
 C Interval: 22.5DEG
 Test Speed: 10.0deg/s
 Temperature:25.5DEG
 Operators:BEN
 Test Date:2016-06-02

γ Range: 0 - 180DEG
 γ Interval: 1.0DEG
 Test System:EVERFINE GO-R5000_V2 SYSTEM V2.0.351
 Humidity:49%
 Test Distance:2.437m [K=1.0000]
 Remarks:

LUMINANCE LIMITATION CURVES

Test:U:120.0V I:0.5358A P:63.93W PF:0.9939 Lamp Flux:6546.7x1 lm		
NAME: 83232, 83233	TYPE:N/A	WEIGHT:N/A
SPEC.:N/A	DIM.: N/A	SERIAL No.:N/A
MFR.: P.Q.L., Inc.	SUR.:N/A	Shielding Angle:N/A



LUMINANCE cd/(m2)		
G(DEG)	C0/180	C90/270
85	27300	27408
80	36133	35840
75	35231	35490
70	27382	28271
65	25092	25635
60	24424	24690
55	23264	23696
50	21533	22060
45	20235	20778

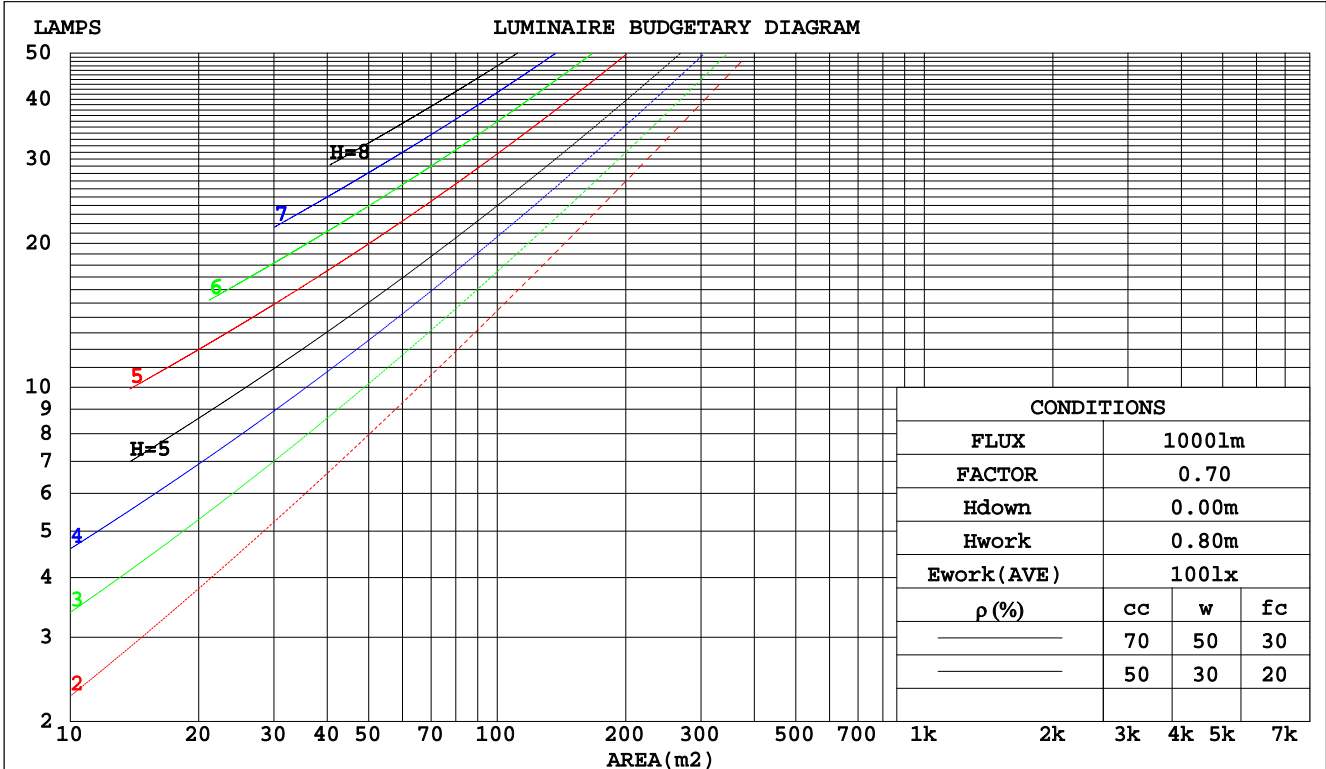
C Range: 0 - 360DEG
 C Interval: 22.5DEG
 Test Speed: 10.0deg/s
 Temperature:25.5DEG
 Operators:BEN
 Test Date:2016-06-02

γ Range: 0 - 180DEG
 γ Interval: 1.0DEG
 Test System:EVERFINE GO-R5000_V2 SYSTEM V2.0.351
 Humidity:49%
 Test Distance:2.437m [K=1.0000]
 Remarks:

CU AND LUMINAIRE BUDGETARY ESTIMATE DIAGRAM

Test:U:120.0V I:0.5358A P:63.93W PF:0.9939 Lamp Flux:6546.7x1 lm		
NAME: 83232, 83233	TYPE:N/A	WEIGHT:N/A
SPEC.:N/A	DIM.: N/A	SERIAL No.:N/A
MFR.: P.Q.L., Inc.	SUR.:N/A	Shielding Angle:N/A

pcc	80%			70%			50%			30%			10%			0
	50%	30%	10%	50%	30%	10%	50%	30%	10%	50%	30%	10%	50%	30%	10%	0
pw																0
pfc	20%			20%			20%			20%			20%			0
RCR	RCR:Room Cavity Ratio															
	Coefficients of Utilization(CU)															
0.0	1.19	1.19	1.19	1.16	1.16	1.16	1.11	1.11	1.11	1.06	1.06	1.06	1.01	1.01	1.01	.99
1.0	.00	.94	.89	.97	.92	.88	.93	.88	.85	.88	.85	.82	.85	.82	.79	.77
2.0	.84	.76	.69	.82	.74	.68	.78	.72	.66	.74	.69	.64	.71	.67	.63	.60
3.0	.72	.62	.55	.70	.61	.54	.67	.59	.53	.64	.57	.52	.61	.55	.51	.48
4.0	.62	.52	.45	.61	.51	.44	.58	.50	.43	.56	.48	.43	.53	.47	.42	.39
5.0	.55	.45	.37	.54	.44	.37	.51	.43	.36	.49	.42	.36	.47	.40	.35	.33
6.0	.49	.39	.32	.48	.38	.31	.46	.37	.31	.44	.36	.31	.42	.35	.30	.28
7.0	.44	.34	.27	.43	.34	.27	.41	.33	.27	.39	.32	.26	.38	.31	.26	.24
8.0	.40	.30	.24	.39	.30	.24	.37	.29	.23	.36	.29	.23	.35	.28	.23	.21
9.0	.36	.27	.21	.35	.27	.21	.34	.26	.21	.33	.26	.21	.32	.25	.20	.18
10.0	.33	.24	.19	.32	.24	.19	.31	.24	.19	.30	.23	.18	.29	.23	.18	.16



C Range: 0 - 360DEG
 C Interval: 22.5DEG
 Test Speed: 10.0deg/s
 Temperature:25.5DEG
 Operators:BEN
 Test Date:2016-06-02

γ Range: 0 - 180DEG
 γ Interval: 1.0DEG
 Test System:EVERFINE GO-R5000_V2 SYSTEM V2.0.351
 Humidity:49%
 Test Distance:2.437m [K=1.0000]
 Remarks:

WEC AND CCEC

Test:U:120.0V I:0.5358A P:63.93W PF:0.9939 Lamp Flux:6546.7x1 lm		
NAME: 83232, 83233	TYPE:N/A	WEIGHT:N/A
SPEC.:N/A	DIM.: N/A	SERIAL No.:N/A
MFR.: P.Q.L., Inc.	SUR.:N/A	Shielding Angle:N/A

ρcc	80%			70%			50%			30%			10%			0
ρw	50%	30%	10%	50%	30%	10%	50%	30%	10%	50%	30%	10%	50%	30%	10%	0
ρfc	20%			20%			20%			20%			20%			0
RCR	RCR:Room Cavity Ratio						Wall Exitance Coefficients(WEC)									
0.0																
1.0	.388	.220	.070	.380	.217	.069	.366	.210	.067	.353	.203	.065	.341	.197	.064	
2.0	.351	.192	.059	.344	.190	.058	.332	.184	.057	.320	.179	.056	.309	.175	.055	
3.0	.316	.168	.050	.310	.166	.050	.299	.162	.049	.288	.158	.048	.278	.154	.048	
4.0	.286	.149	.044	.280	.147	.043	.270	.143	.043	.261	.140	.042	.252	.137	.042	
5.0	.260	.132	.038	.255	.131	.038	.246	.128	.038	.238	.125	.037	.230	.123	.037	
6.0	.238	.119	.034	.233	.118	.034	.225	.116	.034	.218	.113	.033	.211	.111	.033	
7.0	.219	.108	.031	.215	.107	.031	.208	.105	.030	.201	.103	.030	.195	.101	.030	
8.0	.202	.099	.028	.199	.098	.028	.193	.096	.027	.187	.095	.027	.181	.093	.027	
9.0	.188	.091	.025	.185	.090	.025	.179	.089	.025	.174	.087	.025	.169	.086	.025	
10.0	.176	.084	.023	.173	.084	.023	.168	.082	.023	.163	.081	.023	.158	.080	.023	

ρcc	80%			70%			50%			30%			10%			0
ρw	50%	30%	10%	50%	30%	10%	50%	30%	10%	50%	30%	10%	50%	30%	10%	0
ρfc	20%			20%			20%			20%			20%			0
RCR	RCR:Room Cavity Ratio						Ceiling Cavity Exitance Coefficients(CCEC)									
0.0	.198	.198	.198	.169	.169	.169	.115	.115	.115	.066	.066	.066	.021	.021	.021	
1.0	.193	.163	.136	.165	.140	.117	.113	.096	.081	.065	.056	.047	.021	.018	.015	
2.0	.188	.139	.098	.161	.120	.085	.110	.083	.059	.064	.048	.035	.020	.016	.011	
3.0	.181	.122	.075	.155	.105	.065	.107	.073	.046	.062	.043	.027	.020	.014	.009	
4.0	.173	.109	.060	.149	.095	.053	.102	.066	.037	.059	.039	.022	.019	.013	.007	
5.0	.166	.099	.050	.142	.086	.044	.098	.060	.031	.057	.035	.018	.018	.012	.006	
6.0	.158	.091	.043	.136	.079	.038	.094	.055	.027	.054	.033	.016	.018	.011	.005	
7.0	.151	.084	.038	.130	.073	.033	.090	.051	.024	.052	.030	.014	.017	.010	.005	
8.0	.144	.079	.034	.124	.068	.030	.086	.048	.021	.050	.028	.013	.016	.009	.004	
9.0	.137	.074	.031	.118	.064	.027	.082	.045	.019	.048	.027	.012	.015	.009	.004	
10.0	.131	.070	.029	.113	.060	.025	.078	.042	.018	.046	.025	.011	.015	.008	.004	

C Range: 0 - 360DEG
 C Interval: 22.5DEG
 Test Speed: 10.0deg/s
 Temperature:25.5DEG
 Operators:BEN
 Test Date:2016-06-02

γ Range: 0 - 180DEG
 γ Interval: 1.0DEG
 Test System:EVERFINE GO-R5000_V2 SYSTEM V2.0.351
 Humidity:49%
 Test Distance:2.437m [K=1.0000]
 Remarks:

UGR(Unified Glare Rating) Table

Test:U:120.0V I:0.5358A P:63.93W PF:0.9939 Lamp Flux:6546.7x1 lm										
NAME: 83232, 83233					TYPE:N/A			WEIGHT:N/A		
SPEC.:N/A					DIM.: N/A			SERIAL No.:N/A		
MFR.: P.Q.L., Inc.					SUR.:N/A			Shielding Angle:N/A		
ceiling/cavity	0.7	0.7	0.5	0.5	0.3	0.7	0.7	0.5	0.5	0.3
walls	0.5	0.3	0.5	0.3	0.3	0.5	0.3	0.5	0.3	0.3
working plane	0.2	0.2	0.2	0.2	0.2	0.2	0.2	0.2	0.2	0.2
Room dimensions	Viewed crosswise					Viewed endwise				
x = 2H y = 2H	24.2	25.9	24.5	26.1	26.4	24.3	26.0	24.5	26.2	26.4
3H	26.4	28.0	26.7	28.3	28.5	26.5	28.1	26.9	28.4	28.7
4H	27.8	29.3	28.1	29.6	29.9	27.9	29.5	28.3	29.7	30.0
6H	29.0	30.4	29.4	30.7	31.1	29.1	30.5	29.4	30.8	31.1
8H	29.3	30.7	29.7	31.0	31.3	29.3	30.7	29.7	31.1	31.4
12H	29.5	30.8	29.8	31.1	31.5	29.5	30.8	29.9	31.2	31.5
4H 2H	25.0	26.5	25.3	26.8	27.1	25.0	26.6	25.4	26.9	27.1
3H	27.5	28.8	27.9	29.2	29.5	27.6	28.9	28.0	29.3	29.6
4H	29.1	30.3	29.5	30.6	31.0	29.2	30.4	29.6	30.8	31.1
6H	30.4	31.5	30.8	31.9	32.3	30.4	31.6	30.9	31.9	32.3
8H	30.8	31.8	31.2	32.2	32.6	30.8	31.8	31.2	32.2	32.6
12H	31.0	31.9	31.4	32.3	32.8	31.0	31.9	31.4	32.3	32.8
8H 4H	29.7	30.7	30.1	31.1	31.5	29.7	30.8	30.2	31.2	31.6
6H	31.2	32.0	31.6	32.5	32.9	31.2	32.1	31.7	32.5	33.0
8H	31.6	32.4	32.1	32.8	33.3	31.6	32.4	32.1	32.8	33.3
12H	31.9	32.6	32.4	33.0	33.5	31.9	32.6	32.4	33.0	33.5
12H 4H	29.7	30.7	30.2	31.1	31.6	29.8	30.8	30.3	31.2	31.6
6H	31.3	32.1	31.8	32.5	33.0	31.3	32.1	31.8	32.5	33.0
8H	31.8	32.4	32.3	32.9	33.4	31.8	32.4	32.3	32.9	33.4
Variations with the observer position at spacings:										
S = 1.0H	+ 0.1 / - 0.1					+ 0.1 / - 0.1				
1.5H	+ 0.2 / - 0.2					+ 0.2 / - 0.2				
2.0H	+ 0.1 / - 0.4					+ 0.1 / - 0.4				

CIE Pub.117 Corrected 6547 lm Total Lamp Luminous Flux.(8log(F/F0) = 6.5)

C Range: 0 - 360DEG
 C Interval: 22.5DEG
 Test Speed: 10.0deg/s
 Temperature:25.5DEG
 Operators:BEN
 Test Date:2016-06-02

γ Range: 0 - 180DEG
 γ Interval: 1.0DEG
 Test System:EVERFINE GO-R5000_V2 SYSTEM V2.0.351
 Humidity:49%
 Test Distance:2.437m [K=1.0000]
 Remarks:

UTILIZATION FACTORS TABLE

Test:U:120.0V I:0.5358A P:63.93W PF:0.9939 Lamp Flux:6546.7x1 lm		
NAME: 83232, 83233	TYPE:N/A	WEIGHT:N/A
SPEC.:N/A	DIM.: N/A	SERIAL No.:N/A
MFR.: P.Q.L., Inc.	SUR.:N/A	Shielding Angle:N/A

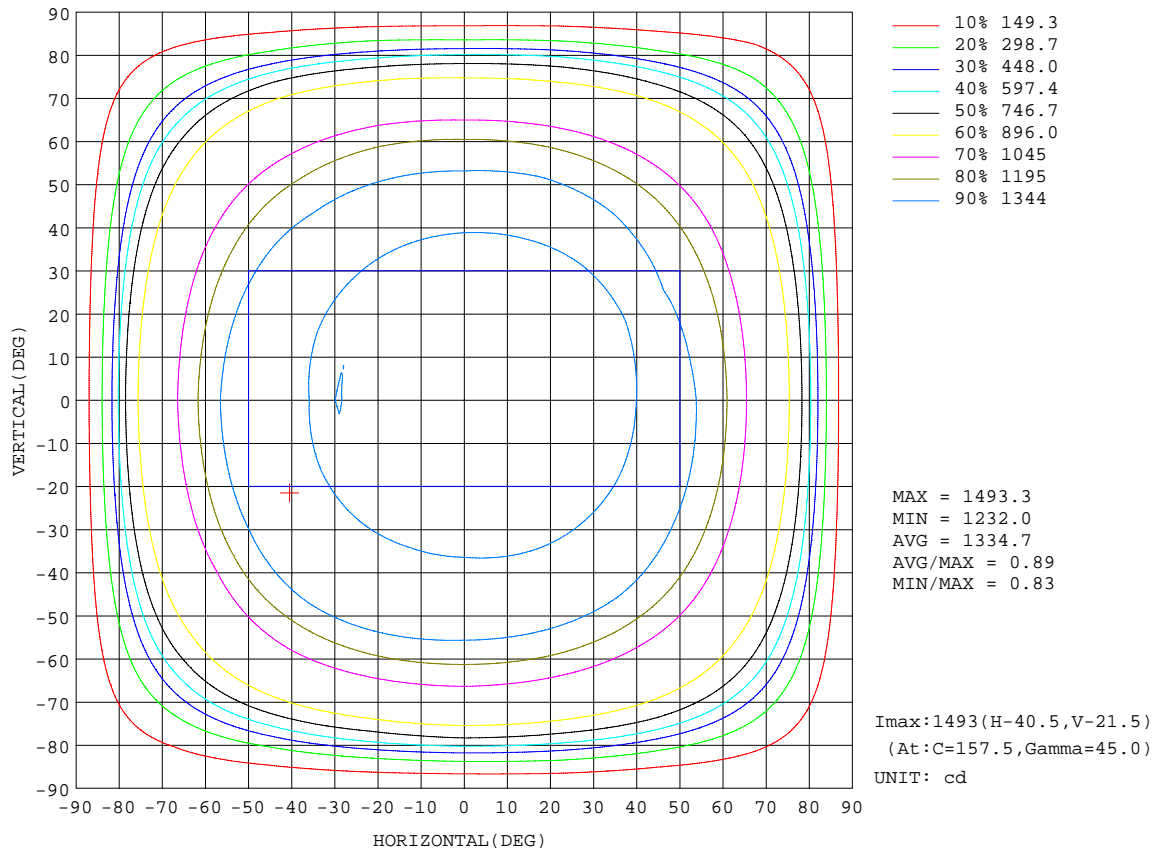
REFLECTANCE										
Ceiling	0.8	0.8	0.8	0.7	0.7	0.7	0.5	0.5	0.5	0
Walls	0.7	0.5	0.3	0.7	0.5	0.3	0.7	0.5	0.3	0
Working plane	0.2	0.2	0.2	0.2	0.2	0.2	0.2	0.2	0.2	0
ROOM INDEX	UTILIZATION FACTORS(PERCENT) $k(RI) \times RCR = 5$									
k = 0.60	49	36	28	48	36	28	47	35	28	21
0.80	59	45	37	58	45	37	56	44	36	28
1.00	67	54	46	66	54	45	63	56	45	36
1.25	75	62	54	73	62	53	70	60	52	44
1.50	80	68	60	79	67	59	75	65	58	49
2.00	88	78	70	86	76	69	82	74	67	58
2.50	93	83	76	91	82	75	87	79	73	63
3.00	97	89	82	95	87	80	90	84	78	68
4.00	102	95	89	99	93	87	95	89	85	75
5.00	105	99	94	102	97	92	98	93	89	79
ROOM INDEX	UF(total)									Direct
According to DIN EN 13032-2 2004			Suspended				SHRNOM = 1.25			

C Range: 0 - 360DEG
 C Interval: 22.5DEG
 Test Speed: 10.0deg/s
 Temperature:25.5DEG
 Operators:BEN
 Test Date:2016-06-02

γ Range: 0 - 180DEG
 γ Interval: 1.0DEG
 Test System:EVERFINE GO-R5000_V2 SYSTEM V2.0.351
 Humidity:49%
 Test Distance:2.437m [K=1.0000]
 Remarks:

ISOCANDELA DIAGRAM

Test:U:120.0V I:0.5358A P:63.93W PF:0.9939 Lamp Flux:6546.7x1 lm		
NAME: 83232, 83233	TYPE:N/A	WEIGHT:N/A
SPEC.:N/A	DIM.: N/A	SERIAL No.:N/A
MFR.: P.Q.L., Inc.	SUR.:N/A	Shielding Angle:N/A

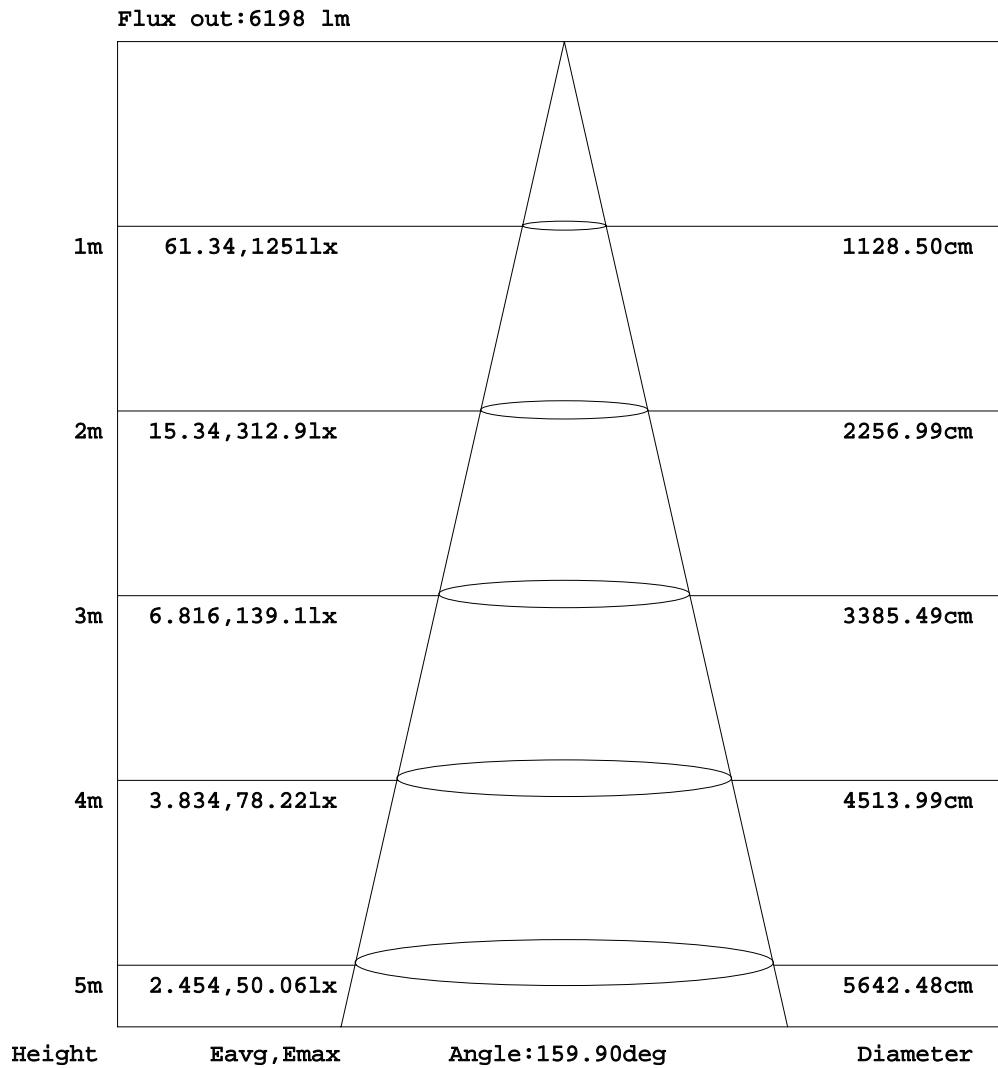


C Range: 0 - 360DEG
 C Interval: 22.5DEG
 Test Speed: 10.0deg/s
 Temperature:25.5DEG
 Operators:BEN
 Test Date:2016-06-02

γ Range: 0 - 180DEG
 γ Interval: 1.0DEG
 Test System:EVERFINE GO-R5000_V2 SYSTEM V2.0.351
 Humidity:49%
 Test Distance:2.437m [K=1.0000]
 Remarks:

AAI Figure

Test:U:120.0V I:0.5358A P:63.93W PF:0.9939 Lamp Flux:6546.7x1 lm		
NAME: 83232, 83233	TYPE:N/A	WEIGHT:N/A
SPEC.:N/A	DIM.: N/A	SERIAL No.:N/A
MFR.: P.Q.L., Inc.	SUR.:N/A	Shielding Angle:N/A



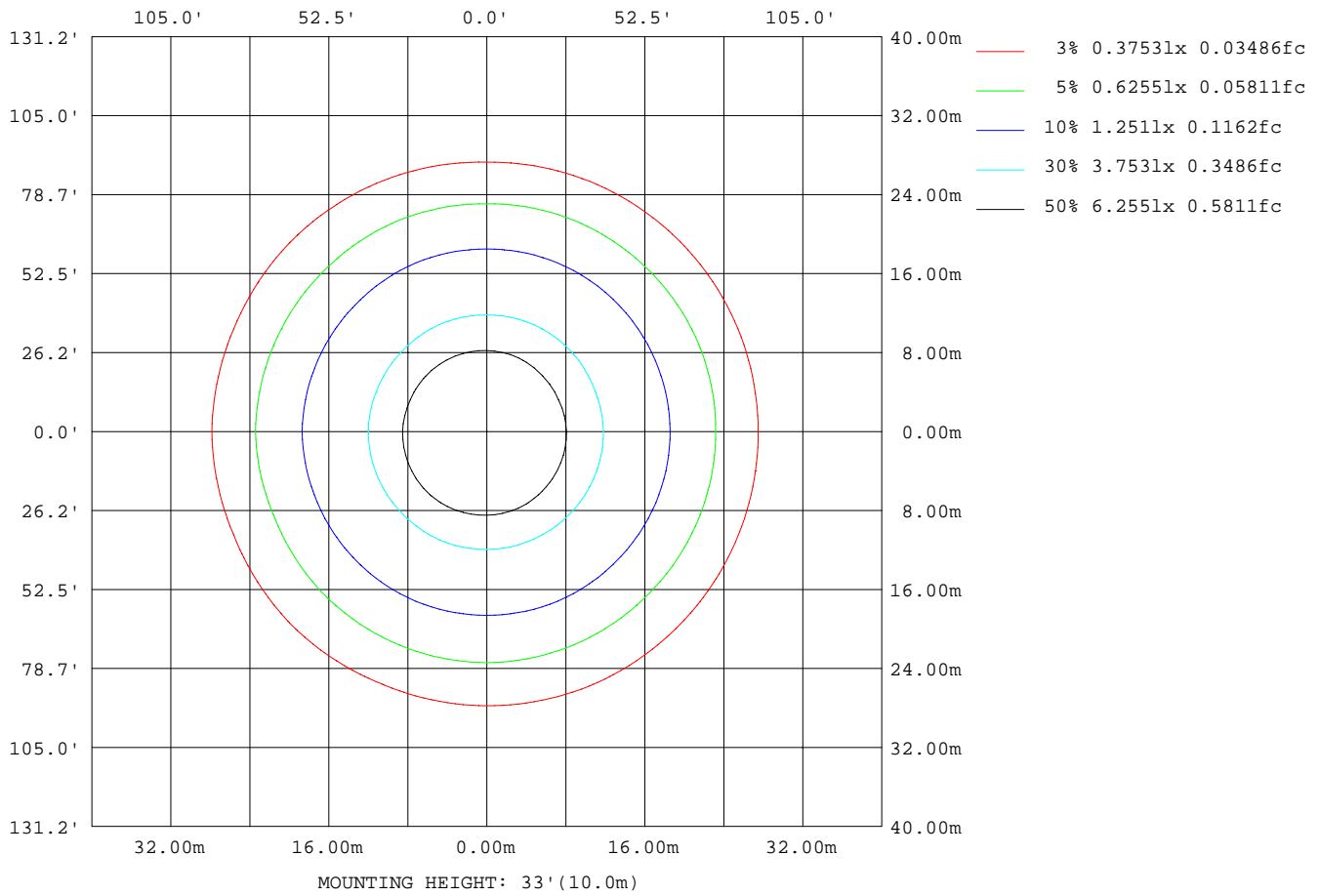
Note:The Curves indicate the illuminated area and the average illumination when the luminaire is at different distance.

C Range: 0 - 360DEG
 C Interval: 22.5DEG
 Test Speed: 10.0deg/s
 Temperature:25.5DEG
 Operators:BEN
 Test Date:2016-06-02

γ Range: 0 - 180DEG
 γ Interval: 1.0DEG
 Test System:EVERFINE GO-R5000_V2 SYSTEM V2.0.351
 Humidity:49%
 Test Distance:2.437m [K=1.0000]
 Remarks:

ISOLUX DIAGRAM

Test:U:120.0V I:0.5358A P:63.93W PF:0.9939 Lamp Flux:6546.7x1 lm		
NAME: 83232, 83233	TYPE:N/A	WEIGHT:N/A
SPEC.:N/A	DIM.: N/A	SERIAL No.:N/A
MFR.: P.Q.L., Inc.	SUR.:N/A	Shielding Angle:N/A



C Range: 0 - 360DEG
 C Interval: 22.5DEG
 Test Speed: 10.0deg/s
 Temperature:25.5DEG
 Operators:BEN
 Test Date:2016-06-02

γ Range: 0 - 180DEG
 γ Interval: 1.0DEG
 Test System:EVERFINE GO-R5000_V2 SYSTEM V2.0.351
 Humidity:49%
 Test Distance:2.437m [K=1.0000]
 Remarks:

LED Avg.L Report

Test:U:120.0V I:0.5358A P:63.93W PF:0.9939 Lamp Flux:6546.7x1 lm		
NAME: 83232, 83233	TYPE:N/A	WEIGHT:N/A
SPEC.:N/A	DIM.: N/A	SERIAL No.:N/A
MFR.: P.Q.L., Inc.	SUR.:N/A	Shielding Angle:N/A

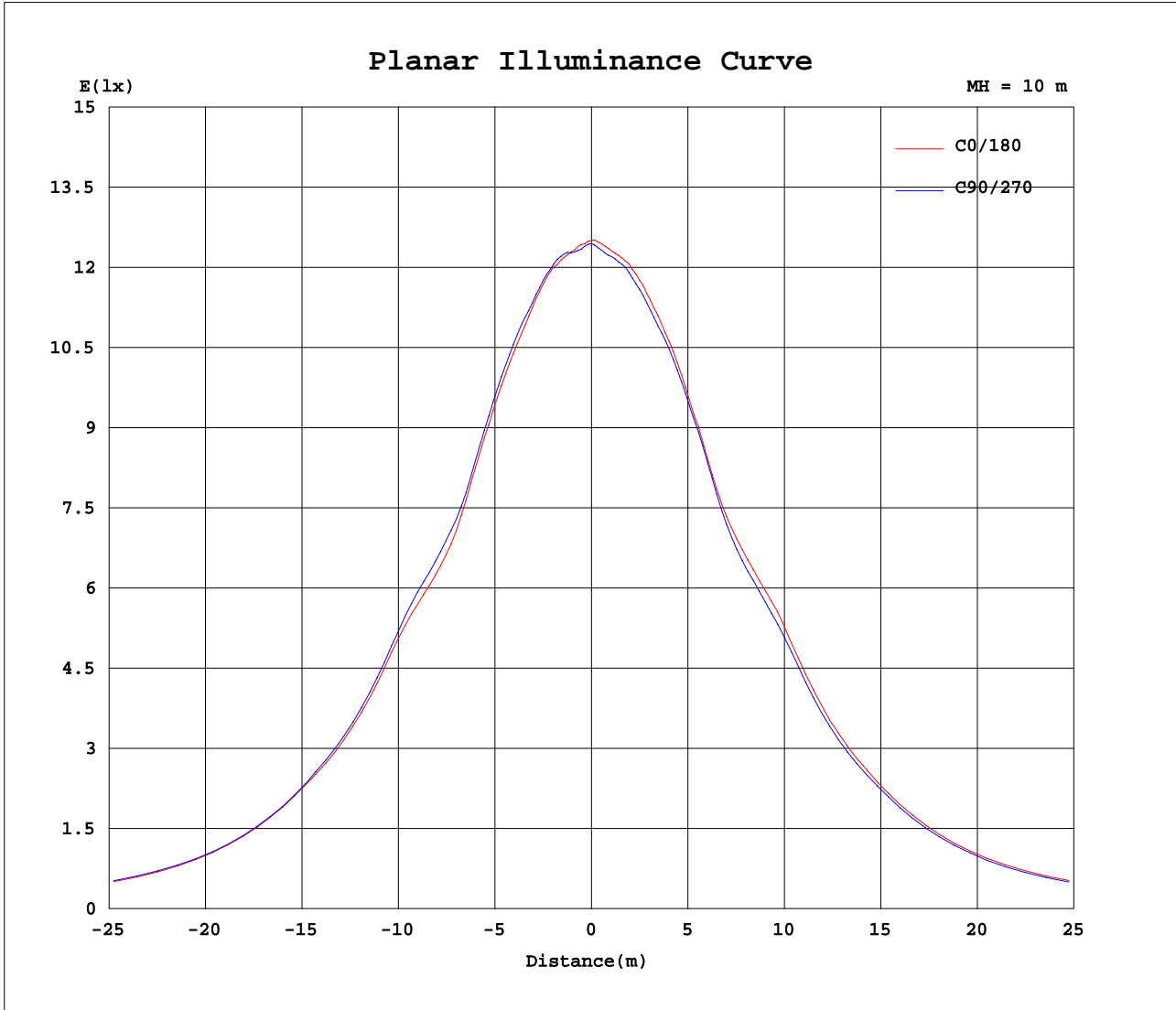
AvgL	cd/m2
L_0~180(65)av	25319
L_0~180(75)av	35239
L_0~180(85)av	27575
L_90~270(65)av	25180
L_90~270(75)av	34975
L_90~270(85)av	27169
L_45(65)av	25202
L_45(75)av	35108
L_45(85)av	26112

Standard: GB/T 29293-2012

C Range: 0 - 360DEG
 C Interval: 22.5DEG
 Test Speed: 10.0deg/s
 Temperature:25.5DEG
 Operators:BEN
 Test Date:2016-06-02

γ Range: 0 - 180DEG
 γ Interval: 1.0DEG
 Test System:EVERFINE GO-R5000_V2 SYSTEM V2.0.351
 Humidity:49%
 Test Distance:2.437m [K=1.0000]
 Remarks:

Planar Illuminance Curve



C Range: 0 - 360DEG
 C Interval: 22.5DEG
 Test Speed: 10.0deg/s
 Temperature: 25.5DEG
 Operators: BEN
 Test Date: 2016-06-02

γ Range: 0 - 180DEG
 γ Interval: 1.0DEG
 Test System: EVERFINE GO-R5000_V2 SYSTEM V2.0.351
 Humidity: 49%
 Test Distance: 2.437m [K=1.0000]
 Remarks:

LUMINOUS DISTRIBUTION INTENSITY DATA

Test:U:120.0V I:0.5358A P:63.93W PF:0.9939 Lamp Flux:6546.7x1 lm		
NAME: 83232, 83233	TYPE:N/A	WEIGHT:N/A
SPEC.:N/A	DIM.: N/A	SERIAL No.:N/A
MFR.: P.Q.L., Inc.	SUR.:N/A	Shielding Angle:N/A

Table--1

UNIT: cd

C(DEG) γ (DEG)	0	22.5	45	67.5	90	112.5	135	157.5	180	202.5	225	247.5	270	292.5	315	337.5			
0	1245	1245	1245	1245	1245	1245	1245	1245	1245	1245	1245	1245	1245	1245	1245	1245			
5	1241	1242	1241	1242	1244	1247	1247	1245	1244	1241	1239	1240	1237	1238	1239	1240			
10	1256	1262	1261	1268	1273	1274	1272	1269	1263	1258	1258	1257	1257	1255	1253	1251			
15	1276	1282	1283	1289	1290	1296	1293	1289	1288	1283	1280	1277	1274	1274	1274	1276			
20	1289	1294	1300	1313	1316	1319	1320	1316	1312	1309	1306	1305	1299	1297	1289	1287			
25	1309	1312	1319	1333	1338	1341	1340	1339	1336	1332	1328	1330	1326	1323	1315	1309			
30	1309	1310	1316	1326	1337	1339	1339	1337	1337	1329	1332	1337	1333	1332	1317	1314			
35	1280	1281	1289	1311	1326	1334	1331	1333	1329	1315	1313	1311	1309	1303	1289	1282			
40	1339	1348	1366	1391	1402	1417	1427	1421	1405	1385	1383	1374	1367	1354	1338	1332			
45	1424	1430	1449	1465	1470	1492	1499	1501	1486	1461	1455	1456	1437	1443	1434	1415			
50	1378	1384	1391	1404	1419	1431	1422	1431	1429	1396	1385	1395	1384	1392	1384	1365			
55	1328	1332	1345	1351	1360	1376	1385	1365	1368	1337	1319	1324	1326	1332	1330	1321			
60	1215	1217	1223	1237	1235	1239	1241	1243	1247	1221	1208	1221	1210	1220	1218	1220			
65	1055	1058	1060	1074	1084	1086	1082	1068	1085	1064	1056	1058	1045	1055	1062	1066			
70	932	941	953	969	967	962	979	961	966	950	950	939	920	933	938	942			
75	908	899	909	915	919	901	898	894	917	911	914	900	891	898	913	921			
80	624	627	630	626	623	596	580	587	619	600	605	598	614	638	635	642			
85	237	237	233	245	239	227	213	225	244	235	226	232	235	247	238	252			
90	38.8	38.4	56.0	51.3	45.7	46.6	49.2	41.7	67.1	53.3	42.2	43.1	42.2	48.5	50.7	55.1			
95	26.2	28.3	1.51	1.12	0.92	1.23	1.98	24.7	33.5	26.3	1.57	0.97	0.58	0.79	0.85	26.7			
100	32.1	13.9	3.24	60.6	82.1	60.8	2.63	6.87	18.1	5.94	1.82	63.3	79.1	54.3	2.49	18.0			
105	5.09	2.99	4.02	67.0	89.9	65.9	4.69	1.28	2.33	0.93	3.67	61.8	85.1	61.1	2.70	3.22			
110	5.92	1.35	4.84	28.6	40.9	27.5	4.89	1.31	0.89	1.04	4.14	25.8	37.6	25.6	3.69	1.10			
115	1.14	1.18	3.76	13.4	18.0	13.2	3.71	1.11	1.05	0.99	3.30	11.9	15.5	11.6	2.99	1.07			
120	1.15	1.14	3.13	10.4	13.9	10.5	3.08	1.13	1.07	1.06	2.76	9.44	12.4	8.98	2.52	1.06			
125	1.10	1.12	2.62	7.96	10.4	8.13	2.64	1.13	1.14	1.12	2.39	7.34	9.40	6.87	2.08	1.09			
130	1.14	1.17	2.07	6.65	8.46	6.87	2.11	1.16	1.16	1.17	1.88	6.39	7.84	6.05	1.60	1.17			
135	1.22	1.23	1.33	5.35	7.08	5.46	1.50	1.23	1.20	1.22	1.34	4.53	6.35	4.61	1.22	1.20			
140	1.33	1.33	1.49	1.54	4.66	1.56	1.59	1.37	1.22	1.22	1.31	1.31	3.74	1.31	1.30	1.19			
145	1.49	1.62	1.69	1.63	1.62	1.64	1.72	1.62	1.34	1.37	1.28	1.30	1.26	1.29	1.27	1.29			
150	1.79	1.82	1.82	1.75	1.71	1.81	1.85	1.79	1.31	1.26	1.25	1.24	1.19	1.21	1.24	1.30			
155	1.92	1.92	1.85	1.84	1.80	1.87	1.91	1.90	1.31	1.29	1.29	1.29	1.23	1.26	1.25	1.35			
160	1.99	1.99	1.91	1.89	1.82	1.91	1.97	1.95	1.34	1.31	1.30	1.31	1.29	1.26	1.17	1.35			
165	1.91	1.86	1.76	1.74	1.75	1.84	1.89	1.92	1.39	1.36	1.36	1.35	1.32	1.26	1.20	1.31			
170	1.74	1.73	1.70	1.63	1.64	1.73	1.81	1.82	1.41	1.40	1.36	1.35	1.30	1.23	1.25	1.34			
175	1.77	1.70	1.69	1.58	1.58	1.68	1.73	1.75	1.50	1.50	1.45	1.40	1.38	1.29	1.36	1.43			
180	1.56	1.51	1.49	1.45	1.45	1.47	1.54	1.55	1.59	1.57	1.54	1.51	1.46	1.46	1.50	1.59			

C Range: 0 - 360DEG
 C Interval: 22.5DEG
 Test Speed: 10.0deg/s
 Temperature:25.5DEG
 Operators:BEN
 Test Date:2016-06-02

γ Range: 0 - 180DEG
 γ Interval: 1.0DEG
 Test System:EVERFINE GO-R5000_V2 SYSTEM V2.0.351
 Humidity:49%
 Test Distance:2.437m [K=1.0000]
 Remarks: