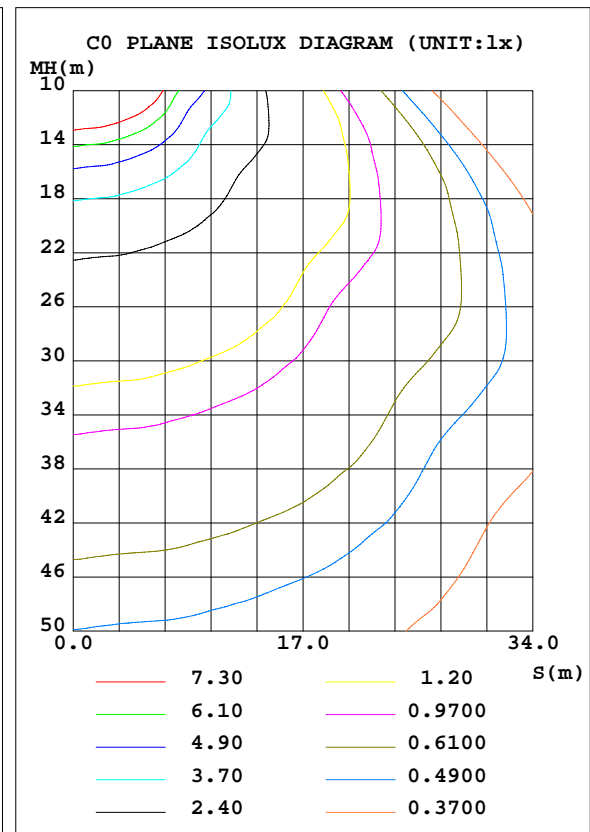
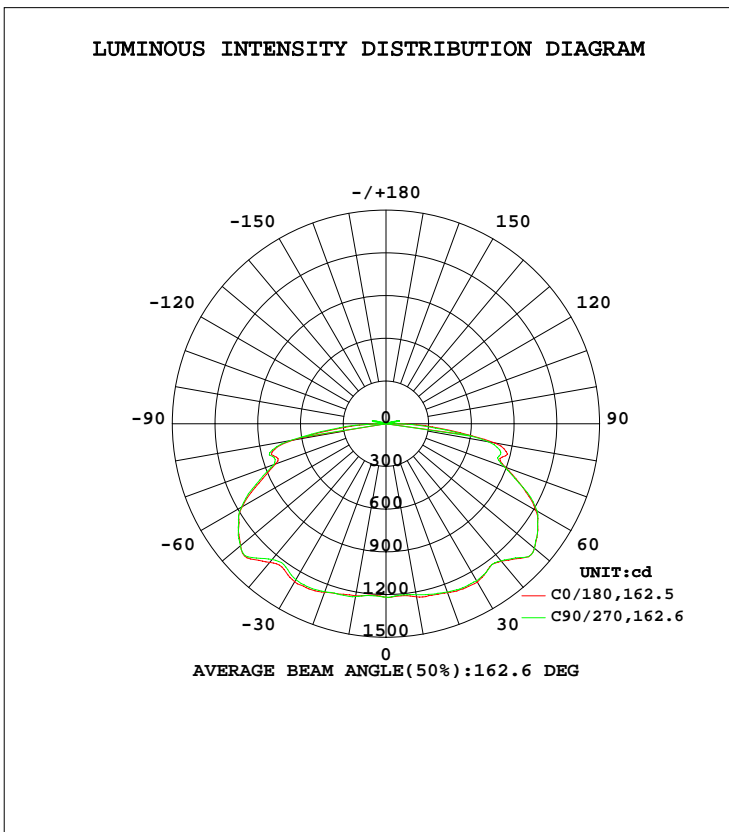


LUMINAIRE PHOTOMETRIC TEST REPORT

Test:U:120.0V I:0.4898A P:58.43W PF:0.9941 Lamp Flux:6343.42x1 lm		
NAME: Parking Garage Luminaires	TYPE:N/A	WEIGHT:N/A
SPEC.:N/A	DIM.: N/A	SERIAL No.:N/A
MFR.: P.Q.L., Inc.	SUR.:N/A	Shielding Angle:N/A

DATA OF LAMP		PHOTOMETRIC DATA Eff: 108.56 lm/W			
MODEL	83345	I _{max} (cd)	1383	S/MH(C0/180)	1.56
NOMINAL POWER(W)	200	LOR(%)	100.0	S/MH(C90/270)	1.56
RATED VOLTAGE(V)	120	TOTAL FLUX(lm)	6343.4	η UP, DN(C0-180)	0.5,49.0
NOMINAL FLUX(lm)	6343.42	CIE CLASS	DIRECT	η UP, DN(C180-360)	0.5,50.0
LAMPS INSIDE	1	η up(%)	1.0	CIBSE SHR NOM	1.75
TEST VOLTAGE(V)	120	η down(%)	99.0	CIBSE SHR MAX	1.75



C Range: 0 - 360DEG
 C Interval: 22.5DEG
 Test Speed: 10.0deg/s
 Temperature:25.2DEG
 Operators:ben
 Test Date:2018-01-20

γ Range: 0 - 180DEG
 γ Interval: 1.0DEG
 Test System:EVERFINE GO-R5000_V2 SYSTEM V2.0.351
 Humidity:45%
 Test Distance:2.451m [K=1.0000]
 Remarks:

ZONAL FLUX DIAGRAM

ZONAL FLUX DIAGRAM:

γ	C0	C45	C90	C135	C180	C225	C270	C315	γ	Φ zone	Φ total	%lum, lamp
10	1227	1226	1231	1237	1234	1226	1220	1220	0- 10	116.1	116.1	1.83,1.83
20	1259	1256	1255	1262	1263	1256	1258	1261	10- 20	352.6	468.7	7.39,7.39
30	1282	1272	1265	1269	1284	1274	1274	1285	20- 30	588.7	1057	16.7,16.7
40	1270	1254	1244	1251	1261	1253	1257	1264	30- 40	784.8	1842	29,29
50	1333	1332	1334	1332	1361	1366	1360	1337	40- 50	1025	2868	45.2,45.2
60	1166	1168	1172	1186	1214	1225	1226	1180	50- 60	1145	4012	63.3,63.3
70	824.1	842.1	838.1	865.0	892.8	895.4	885.0	852.5	60- 70	1021	5033	79.3,79.3
80	663.7	651.6	684.0	719.6	776.9	729.8	732.0	715.1	70- 80	861.4	5895	92.9,92.9
90	38.64	40.83	55.89	61.92	88.34	81.02	70.83	59.85	80- 90	384.5	6279	99,99
100	14.57	1.895	87.56	2.491	35.82	2.396	60.24	1.975	90-100	23.82	6303	99.4,99.4
110	1.082	3.965	33.02	3.636	0.8563	4.027	36.59	3.109	100-110	26.71	6330	99.8,99.8
120	1.093	2.410	11.28	2.319	1.026	2.881	12.09	2.408	110-120	6.519	6336	99.9,99.9
130	1.093	1.127	6.864	1.128	1.077	1.131	8.366	1.102	120-130	3.416	6340	99.9,99.9
140	1.279	1.365	1.348	1.399	1.124	1.223	1.167	1.185	130-140	1.697	6341	100,100
150	1.663	1.727	1.672	1.785	1.221	1.170	1.137	1.153	140-150	0.8496	6342	100,100
160	1.935	1.914	1.884	2.025	1.316	1.266	1.256	1.133	150-160	0.7057	6343	100,100
170	1.834	1.762	1.722	1.865	1.331	1.292	1.260	1.201	160-170	0.4471	6343	100,100
180	1.563	1.499	1.458	1.556	1.610	1.561	1.466	1.492	170-180	0.1473	6343	100,100
DEG	LUMINOUS INTENSITY:cd Less than 25% Percent = 10.0 %									UNIT:lm		

Conical surface Flux(90deg): 2320.4 lm

%lum = 36.6%
 %lamp = 36.6%

Conical surface Flux(120deg): 4012.3 lm

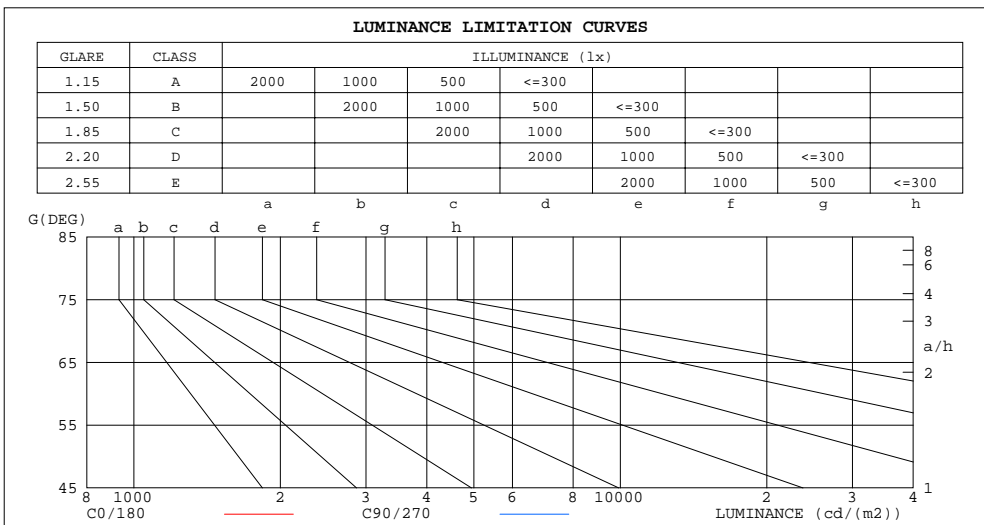
%lum = 63.3%
 %lamp = 63.3%

C Range: 0 - 360DEG
 C Interval: 22.5DEG
 Test Speed: 10.0deg/s
 Temperature:25.2DEG
 Operators:ben
 Test Date:2018-01-20

γ Range: 0 - 180DEG
 γ Interval: 1.0DEG
 Test System:EVERFINE GO-R5000_V2 SYSTEM V2.0.351
 Humidity:45%
 Test Distance:2.451m [K=1.0000]
 Remarks:

LUMINANCE LIMITATION CURVES

Test:U:120.0V I:0.4898A P:58.43W PF:0.9941 Lamp Flux:6343.42x1 lm		
NAME: Parking Garage Luminaires	TYPE:N/A	WEIGHT:N/A
SPEC.:N/A	DIM.: N/A	SERIAL No.:N/A
MFR.: P.Q.L., Inc.	SUR.:N/A	Shielding Angle:N/A



LUMINANCE cd/(m2)		
G(DEG)	C0/180	C90/270
85	70578	80297
80	81946	84415
75	69074	70278
70	51660	52518
65	49922	51043
60	50008	50220
55	47202	47322
50	44454	44478
45	40720	40279

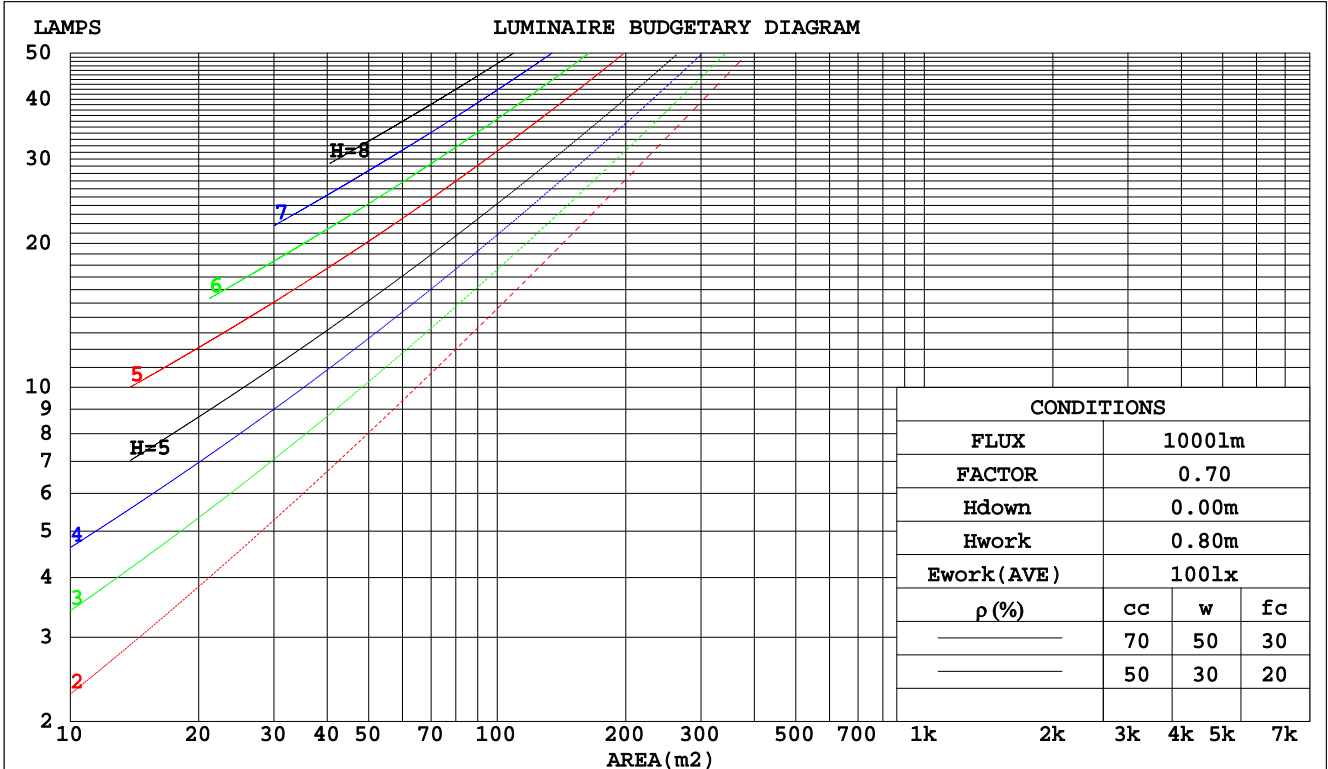
C Range: 0 - 360DEG
 C Interval: 22.5DEG
 Test Speed: 10.0deg/s
 Temperature:25.2DEG
 Operators:ben
 Test Date:2018-01-20

γ Range: 0 - 180DEG
 γ Interval: 1.0DEG
 Test System:EVERFINE GO-R5000_V2 SYSTEM V2.0.351
 Humidity:45%
 Test Distance:2.451m [K=1.0000]
 Remarks:

CU AND LUMINAIRE BUDGETARY ESTIMATE DIAGRAM

Test:U:120.0V I:0.4898A P:58.43W PF:0.9941 Lamp Flux:6343.42x1 lm		
NAME: Parking Garage Luminaires	TYPE:N/A	WEIGHT:N/A
SPEC.:N/A	DIM.: N/A	SERIAL No.:N/A
MFR.: P.Q.L., Inc.	SUR.:N/A	Shielding Angle:N/A

pcc	80%			70%			50%			30%			10%			0
	50%	30%	10%	50%	30%	10%	50%	30%	10%	50%	30%	10%	50%	30%	10%	0
pw																0
pfc	20%			20%			20%			20%			20%			0
RCR	RCR:Room Cavity Ratio															
	Coefficients of Utilization(CU)															
0.0	1.19	1.19	1.19	1.16	1.16	1.16	1.11	1.11	1.11	1.06	1.06	1.06	1.01	1.01	1.01	.99
1.0	.99	.93	.88	.96	.91	.87	.92	.87	.84	.87	.84	.81	.84	.81	.78	.76
2.0	.83	.75	.68	.81	.73	.67	.77	.71	.65	.74	.68	.63	.70	.66	.62	.59
3.0	.71	.61	.54	.69	.60	.53	.66	.58	.52	.63	.56	.51	.60	.55	.50	.47
4.0	.62	.52	.44	.60	.51	.43	.58	.49	.43	.55	.48	.42	.53	.46	.41	.39
5.0	.54	.44	.37	.53	.43	.36	.51	.42	.36	.49	.41	.35	.46	.40	.35	.32
6.0	.48	.38	.31	.47	.38	.31	.45	.37	.30	.43	.36	.30	.42	.35	.30	.27
7.0	.43	.34	.27	.42	.33	.27	.41	.32	.26	.39	.32	.26	.38	.31	.26	.24
8.0	.39	.30	.23	.38	.30	.23	.37	.29	.23	.36	.28	.23	.34	.28	.23	.20
9.0	.36	.27	.21	.35	.27	.21	.34	.26	.20	.33	.25	.20	.31	.25	.20	.18
10.0	.33	.24	.19	.32	.24	.18	.31	.24	.18	.30	.23	.18	.29	.23	.18	.16



C Range: 0 - 360DEG
 C Interval: 22.5DEG
 Test Speed: 10.0deg/s
 Temperature:25.2DEG
 Operators:ben
 Test Date:2018-01-20

γ Range: 0 - 180DEG
 γ Interval: 1.0DEG
 Test System:EVERFINE GO-R5000_V2 SYSTEM V2.0.351
 Humidity:45%
 Test Distance:2.451m [K=1.0000]
 Remarks:

WEC AND CCEC

Test:U:120.0V I:0.4898A P:58.43W PF:0.9941 Lamp Flux:6343.42x1 lm		
NAME: Parking Garage Luminaires	TYPE:N/A	WEIGHT:N/A
SPEC.:N/A	DIM.: N/A	SERIAL No.:N/A
MFR.: P.Q.L., Inc.	SUR.:N/A	Shielding Angle:N/A

ρcc	80%			70%			50%			30%			10%			0
ρw	50%	30%	10%	50%	30%	10%	50%	30%	10%	50%	30%	10%	50%	30%	10%	0
ρfc	20%			20%			20%			20%			20%			0
RCR	RCR:Room Cavity Ratio						Wall Exitance Coefficients(WEC)									
0.0																
1.0	.403	.229	.073	.396	.226	.072	.381	.219	.070	.368	.212	.068	.356	.206	.067	
2.0	.359	.196	.060	.352	.194	.060	.339	.188	.059	.327	.183	.057	.316	.179	.056	
3.0	.320	.171	.051	.314	.168	.051	.303	.164	.050	.292	.160	.049	.282	.156	.048	
4.0	.288	.150	.044	.283	.148	.044	.273	.145	.043	.263	.141	.043	.255	.138	.042	
5.0	.262	.133	.039	.257	.132	.038	.248	.129	.038	.239	.126	.038	.231	.124	.037	
6.0	.239	.120	.034	.235	.119	.034	.227	.116	.034	.219	.114	.033	.212	.112	.033	
7.0	.220	.109	.031	.216	.108	.031	.209	.105	.030	.202	.103	.030	.196	.102	.030	
8.0	.203	.099	.028	.200	.098	.028	.193	.097	.028	.187	.095	.027	.181	.093	.027	
9.0	.189	.091	.025	.186	.091	.025	.180	.089	.025	.174	.087	.025	.169	.086	.025	
10.0	.176	.085	.023	.174	.084	.023	.168	.082	.023	.163	.081	.023	.159	.080	.023	

ρcc	80%			70%			50%			30%			10%			0
ρw	50%	30%	10%	50%	30%	10%	50%	30%	10%	50%	30%	10%	50%	30%	10%	0
ρfc	20%			20%			20%			20%			20%			0
RCR	RCR:Room Cavity Ratio						Ceiling Cavity Exitance Coefficients(CCEC)									
0.0	.198	.198	.198	.169	.169	.169	.116	.116	.116	.066	.066	.066	.021	.021	.021	
1.0	.195	.163	.135	.166	.140	.116	.114	.096	.080	.066	.056	.047	.021	.018	.015	
2.0	.189	.139	.098	.162	.120	.085	.111	.083	.059	.064	.048	.035	.021	.016	.011	
3.0	.182	.123	.075	.156	.106	.065	.107	.073	.046	.062	.043	.027	.020	.014	.009	
4.0	.174	.110	.060	.150	.095	.052	.103	.066	.037	.060	.039	.022	.019	.013	.007	
5.0	.167	.100	.050	.143	.086	.044	.099	.060	.031	.057	.035	.018	.018	.012	.006	
6.0	.159	.092	.043	.136	.079	.038	.094	.056	.027	.055	.033	.016	.018	.011	.005	
7.0	.151	.085	.038	.130	.074	.033	.090	.052	.024	.052	.030	.014	.017	.010	.005	
8.0	.144	.079	.034	.124	.069	.030	.086	.048	.021	.050	.028	.013	.016	.009	.004	
9.0	.137	.074	.031	.118	.064	.027	.082	.045	.019	.048	.027	.012	.015	.009	.004	
10.0	.131	.070	.029	.113	.061	.025	.078	.043	.018	.046	.025	.011	.015	.008	.004	

C Range: 0 - 360DEG
 C Interval: 22.5DEG
 Test Speed: 10.0deg/s
 Temperature:25.2DEG
 Operators:ben
 Test Date:2018-01-20

γ Range: 0 - 180DEG
 γ Interval: 1.0DEG
 Test System:EVERFINE GO-R5000_V2 SYSTEM V2.0.351
 Humidity:45%
 Test Distance:2.451m [K=1.0000]
 Remarks:

UGR(Unified Glare Rating) Table

Test:U:120.0V I:0.4898A P:58.43W PF:0.9941 Lamp Flux:6343.42x1 lm										
NAME: Parking Garage Luminaires					TYPE:N/A			WEIGHT:N/A		
SPEC.:N/A					DIM.: N/A			SERIAL No.:N/A		
MFR.: P.Q.L., Inc.					SUR.:N/A			Shielding Angle:N/A		
ceiling/cavity	0.7	0.7	0.5	0.5	0.3	0.7	0.7	0.5	0.5	0.3
walls	0.5	0.3	0.5	0.3	0.3	0.5	0.3	0.5	0.3	0.3
working plane	0.2	0.2	0.2	0.2	0.2	0.2	0.2	0.2	0.2	0.2
Room dimensions	Viewed crosswise					Viewed endwise				
x = 2H y = 2H	26.6	28.3	26.9	28.5	28.8	26.6	28.3	26.9	28.6	28.8
3H	28.6	30.2	28.9	30.5	30.8	28.7	30.3	29.0	30.6	30.8
4H	29.9	31.5	30.3	31.8	32.1	30.0	31.6	30.4	31.8	32.1
6H	31.4	32.8	31.7	33.1	33.5	31.5	32.9	31.8	33.2	33.5
8H	31.8	33.2	32.2	33.5	33.9	31.9	33.4	32.3	33.7	34.0
12H	32.1	33.4	32.5	33.8	34.1	32.3	33.6	32.6	34.0	34.3
4H 2H	27.4	28.9	27.7	29.2	29.5	27.4	28.9	27.7	29.2	29.5
3H	29.6	31.0	30.0	31.3	31.7	29.7	31.1	30.1	31.4	31.7
4H	31.2	32.4	31.6	32.8	33.2	31.2	32.5	31.6	32.8	33.2
6H	32.8	33.9	33.2	34.3	34.7	32.9	34.0	33.3	34.4	34.8
8H	33.3	34.4	33.7	34.7	35.2	33.4	34.5	33.8	34.9	35.3
12H	33.6	34.6	34.1	35.0	35.4	33.8	34.8	34.2	35.2	35.6
8H 4H	31.8	32.9	32.3	33.3	33.7	31.9	32.9	32.3	33.3	33.7
6H	33.6	34.5	34.1	35.0	35.4	33.7	34.6	34.1	35.0	35.5
8H	34.2	35.0	34.7	35.5	36.0	34.3	35.1	34.8	35.6	36.1
12H	34.6	35.4	35.1	35.8	36.3	34.8	35.5	35.3	36.0	36.5
12H 4H	31.9	32.9	32.4	33.3	33.8	32.0	33.0	32.4	33.4	33.8
6H	33.8	34.6	34.3	35.0	35.5	33.8	34.6	34.3	35.1	35.6
8H	34.4	35.1	34.9	35.6	36.1	34.5	35.2	35.0	35.7	36.2
Variations with the observer position at spacings:										
S = 1.0H	+ 0.1 / - 0.1					+ 0.1 / - 0.1				
1.5H	+ 0.2 / - 0.2					+ 0.2 / - 0.2				
2.0H	+ 0.2 / - 0.4					+ 0.2 / - 0.4				

CIE Pub.117 Corrected 6343 lm Total Lamp Luminous Flux.(8log(F/F0) = 6.4)

C Range: 0 - 360DEG
 C Interval: 22.5DEG
 Test Speed: 10.0deg/s
 Temperature:25.2DEG
 Operators:ben
 Test Date:2018-01-20

γ Range: 0 - 180DEG
 γ Interval: 1.0DEG
 Test System:EVERFINE GO-R5000_V2 SYSTEM V2.0.351
 Humidity:45%
 Test Distance:2.451m [K=1.0000]
 Remarks:

UTILIZATION FACTORS TABLE

Test:U:120.0V I:0.4898A P:58.43W PF:0.9941 Lamp Flux:6343.42x1 lm		
NAME: Parking Garage Luminaires	TYPE:N/A	WEIGHT:N/A
SPEC.:N/A	DIM.: N/A	SERIAL No.:N/A
MFR.: P.Q.L., Inc.	SUR.:N/A	Shielding Angle:N/A

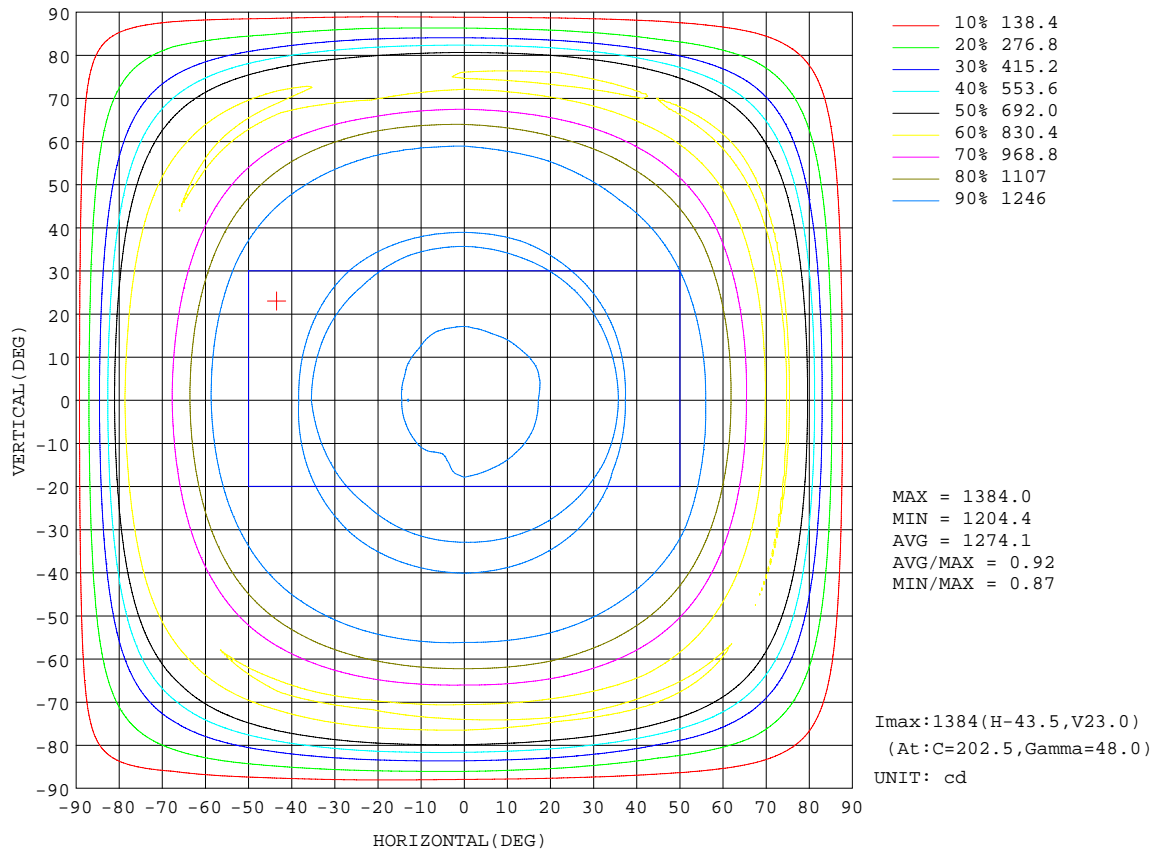
REFLECTANCE										
Ceiling	0.8	0.8	0.8	0.7	0.7	0.7	0.5	0.5	0.5	0
Walls	0.7	0.5	0.3	0.7	0.5	0.3	0.7	0.5	0.3	0
Working plane	0.2	0.2	0.2	0.2	0.2	0.2	0.2	0.2	0.2	0
ROOM INDEX	UTILIZATION FACTORS(PERCENT) $k(RI) \times RCR = 5$									
k = 0.60	49	36	28	48	35	28	47	35	28	20
0.80	58	45	36	57	45	36	55	44	36	28
1.00	67	54	45	66	53	45	63	55	44	36
1.25	74	62	53	73	61	52	70	59	52	43
1.50	80	68	59	78	67	58	74	65	57	48
2.00	88	77	69	86	76	68	82	73	66	57
2.50	93	83	75	90	81	74	86	78	72	62
3.00	96	88	80	94	86	79	89	83	77	67
4.00	101	94	88	99	92	86	94	88	84	73
5.00	105	98	93	102	96	91	97	92	88	77
ROOM INDEX	UF(total)									Direct
According to DIN EN 13032-2 2004			Suspended				SHRNOM = 1.25			

C Range: 0 - 360DEG
 C Interval: 22.5DEG
 Test Speed: 10.0deg/s
 Temperature:25.2DEG
 Operators:ben
 Test Date:2018-01-20

γ Range: 0 - 180DEG
 γ Interval: 1.0DEG
 Test System:EVERFINE GO-R5000_V2 SYSTEM V2.0.351
 Humidity:45%
 Test Distance:2.451m [K=1.0000]
 Remarks:

ISOCANDELA DIAGRAM

Test:U:120.0V I:0.4898A P:58.43W PF:0.9941 Lamp Flux:6343.42x1 lm		
NAME: Parking Garage Luminaires	TYPE:N/A	WEIGHT:N/A
SPEC.:N/A	DIM.: N/A	SERIAL No.:N/A
MFR.: P.Q.L., Inc.	SUR.:N/A	Shielding Angle:N/A

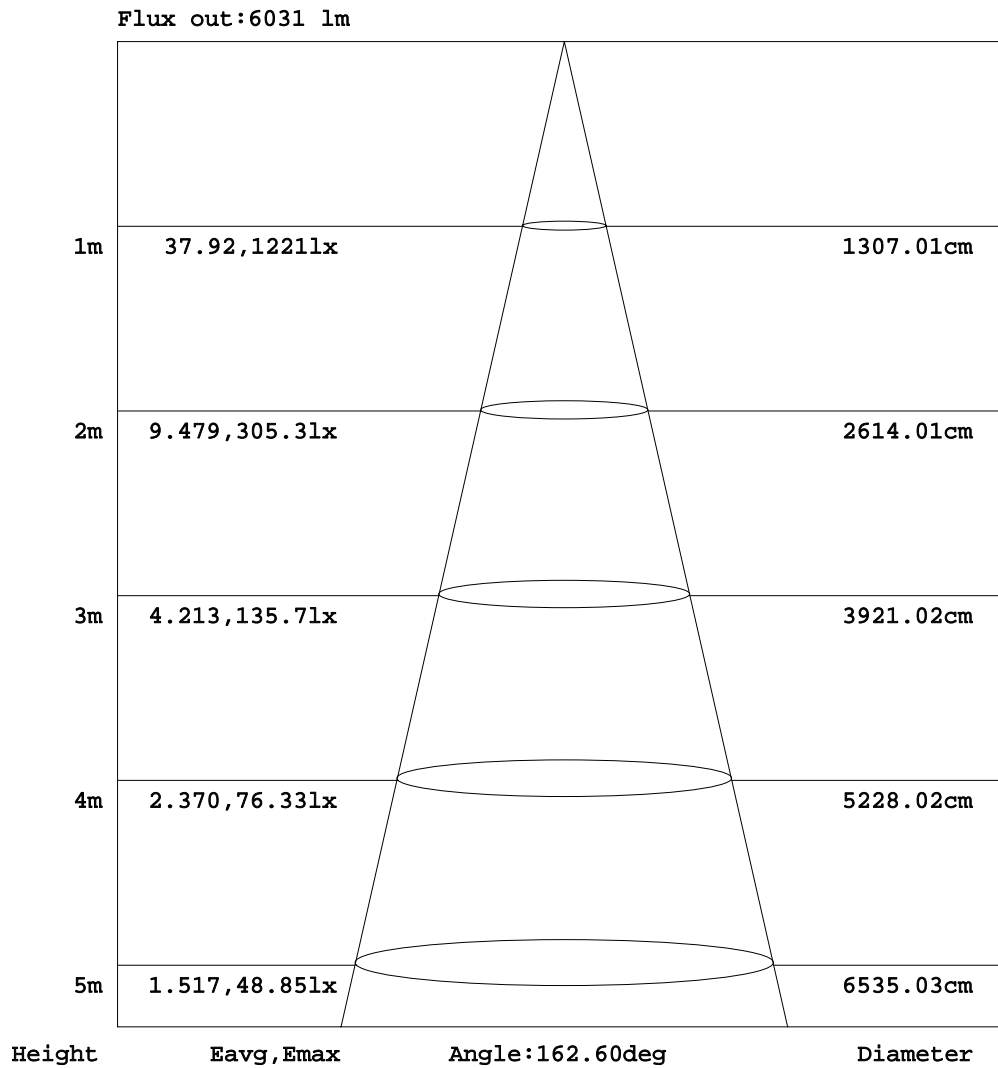


C Range: 0 - 360DEG
 C Interval: 22.5DEG
 Test Speed: 10.0deg/s
 Temperature:25.2DEG
 Operators:ben
 Test Date:2018-01-20

γ Range: 0 - 180DEG
 γ Interval: 1.0DEG
 Test System:EVERFINE GO-R5000_V2 SYSTEM V2.0.351
 Humidity:45%
 Test Distance:2.451m [K=1.0000]
 Remarks:

AAI Figure

Test:U:120.0V I:0.4898A P:58.43W PF:0.9941 Lamp Flux:6343.42x1 lm		
NAME: Parking Garage Luminaires	TYPE:N/A	WEIGHT:N/A
SPEC.:N/A	DIM.: N/A	SERIAL No.:N/A
MFR.: P.Q.L., Inc.	SUR.:N/A	Shielding Angle:N/A



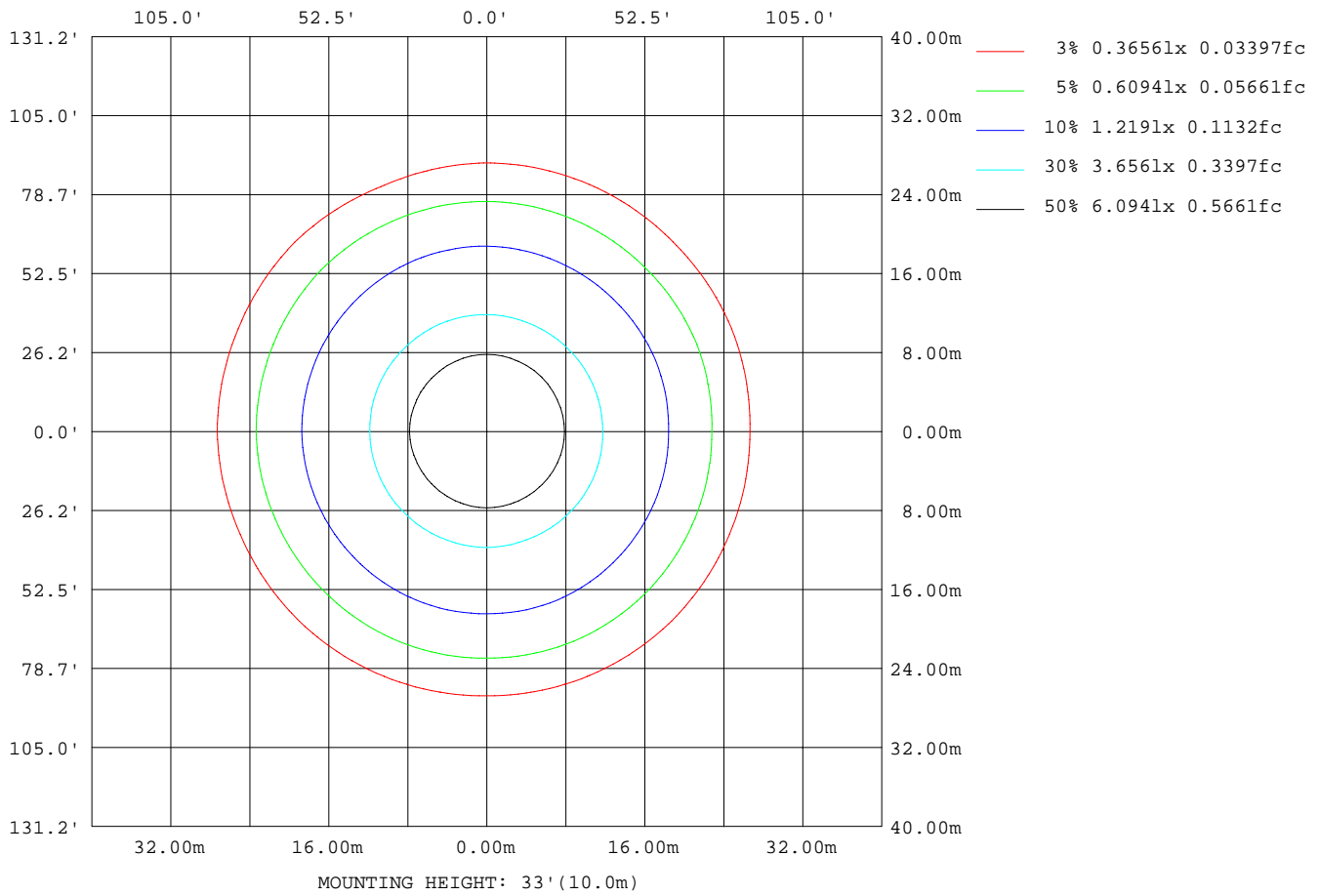
Note:The Curves indicate the illuminated area and the average illumination when the luminaire is at different distance.

C Range: 0 - 360DEG
 C Interval: 22.5DEG
 Test Speed: 10.0deg/s
 Temperature:25.2DEG
 Operators:ben
 Test Date:2018-01-20

γ Range: 0 - 180DEG
 γ Interval: 1.0DEG
 Test System:EVERFINE GO-R5000_V2 SYSTEM V2.0.351
 Humidity:45%
 Test Distance:2.451m [K=1.0000]
 Remarks:

ISOLUX DIAGRAM

Test:U:120.0V I:0.4898A P:58.43W PF:0.9941 Lamp Flux:6343.42x1 lm		
NAME: Parking Garage Luminaires	TYPE:N/A	WEIGHT:N/A
SPEC.:N/A	DIM.: N/A	SERIAL No.:N/A
MFR.: P.Q.L., Inc.	SUR.:N/A	Shielding Angle:N/A



C Range: 0 - 360DEG
 C Interval: 22.5DEG
 Test Speed: 10.0deg/s
 Temperature:25.2DEG
 Operators:ben
 Test Date:2018-01-20

γ Range: 0 - 180DEG
 γ Interval: 1.0DEG
 Test System:EVERFINE GO-R5000_V2 SYSTEM V2.0.351
 Humidity:45%
 Test Distance:2.451m [K=1.0000]
 Remarks:

LED Avg.L Report

Test:U:120.0V I:0.4898A P:58.43W PF:0.9941 Lamp Flux:6343.42x1 lm		
NAME: Parking Garage Luminaires	TYPE:N/A	WEIGHT:N/A
SPEC.:N/A	DIM.: N/A	SERIAL No.:N/A
MFR.: P.Q.L., Inc.	SUR.:N/A	Shielding Angle:N/A

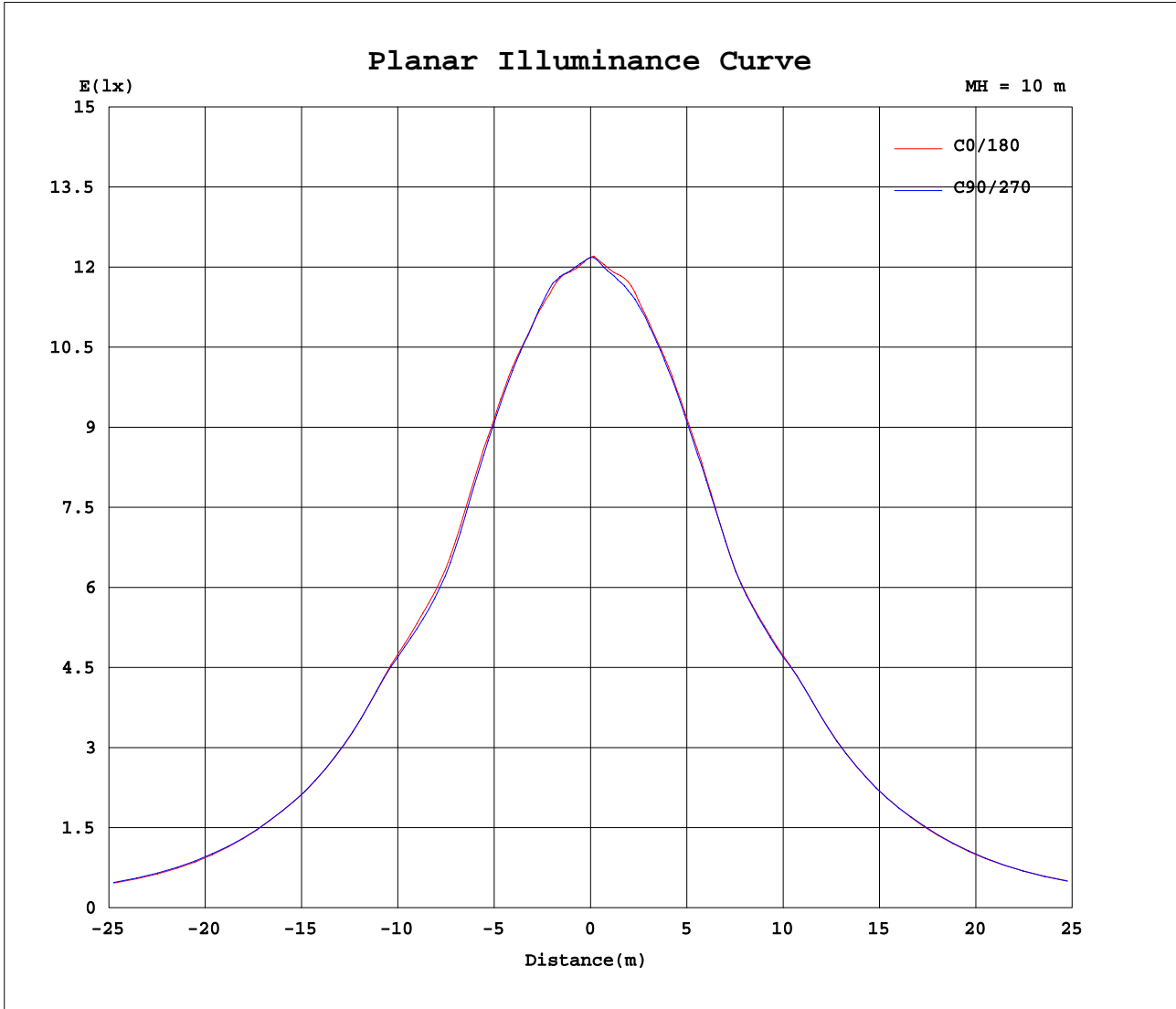
AvgL	cd/m2
L_0~180(65)av	51835
L_0~180(75)av	70590
L_0~180(85)av	82510
L_90~270(65)av	52517
L_90~270(75)av	69642
L_90~270(85)av	82997
L_45(65)av	52374
L_45(75)av	69635
L_45(85)av	77955

Standard: GB/T 29293-2012

C Range: 0 - 360DEG
 C Interval: 22.5DEG
 Test Speed: 10.0deg/s
 Temperature:25.2DEG
 Operators:ben
 Test Date:2018-01-20

γ Range: 0 - 180DEG
 γ Interval: 1.0DEG
 Test System:EVERFINE GO-R5000_V2 SYSTEM V2.0.351
 Humidity:45%
 Test Distance:2.451m [K=1.0000]
 Remarks:

Planar Illuminance Curve



C Range: 0 - 360DEG
 C Interval: 22.5DEG
 Test Speed: 10.0deg/s
 Temperature: 25.2DEG
 Operators: ben
 Test Date: 2018-01-20

γ Range: 0 - 180DEG
 γ Interval: 1.0DEG
 Test System: EVERFINE GO-R5000_V2 SYSTEM V2.0.351
 Humidity: 45%
 Test Distance: 2.451m [K=1.0000]
 Remarks:

LUMINOUS DISTRIBUTION INTENSITY DATA

Test:U:120.0V I:0.4898A P:58.43W PF:0.9941 Lamp Flux:6343.42x1 lm		
NAME: Parking Garage Luminaires	TYPE:N/A	WEIGHT:N/A
SPEC.:N/A	DIM.: N/A	SERIAL No.:N/A
MFR.: P.Q.L., Inc.	SUR.:N/A	Shielding Angle:N/A

Table--1

UNIT: cd

C(DEG) γ (DEG)	0	22.5	45	67.5	90	112.5	135	157.5	180	202.5	225	247.5	270	292.5	315	337.5			
0	1218	1218	1218	1218	1218	1218	1218	1218	1218	1218	1218	1218	1218	1218	1218	1218			
5	1208	1208	1209	1210	1212	1214	1214	1212	1213	1212	1211	1208	1207	1207	1206	1207			
10	1227	1225	1226	1229	1231	1237	1237	1234	1234	1231	1226	1223	1220	1218	1220	1222			
15	1239	1238	1239	1243	1243	1247	1248	1248	1246	1245	1241	1240	1240	1238	1242	1235			
20	1259	1256	1256	1256	1255	1260	1262	1267	1263	1258	1256	1254	1258	1258	1261	1255			
25	1280	1273	1271	1269	1269	1270	1274	1281	1280	1276	1271	1267	1272	1276	1277	1274			
30	1282	1279	1272	1268	1265	1265	1269	1275	1284	1278	1274	1271	1274	1279	1285	1282			
35	1249	1245	1232	1228	1228	1225	1227	1236	1249	1247	1244	1250	1251	1248	1250	1251			
40	1270	1266	1254	1248	1244	1247	1251	1259	1261	1258	1253	1254	1257	1256	1264	1266			
45	1343	1346	1333	1319	1329	1321	1316	1330	1337	1339	1335	1332	1329	1326	1331	1334			
50	1333	1340	1332	1318	1334	1329	1332	1348	1361	1372	1366	1368	1360	1341	1337	1338			
55	1263	1272	1265	1261	1267	1273	1280	1288	1302	1308	1295	1306	1300	1285	1266	1263			
60	1166	1170	1168	1179	1172	1179	1186	1197	1214	1223	1225	1231	1226	1199	1180	1179			
65	984	990	1002	1013	1007	1019	1028	1040	1060	1064	1076	1077	1064	1041	1024	1021			
70	824	828	842	842	838	851	865	869	893	887	895	861	885	873	853	851			
75	834	829	847	839	849	843	853	858	871	840	832	812	833	843	830	835			
80	664	664	652	663	684	708	720	723	777	757	730	721	732	733	715	699			
85	287	290	278	302	327	342	330	355	384	368	354	357	348	337	305	307			
90	38.6	38.5	40.8	52.6	55.9	61.4	61.9	67.2	88.3	85.2	81.0	78.9	70.8	69.2	59.8	60.8			
95	37.5	27.1	3.27	1.16	0.93	1.17	1.34	34.3	37.9	32.0	0.79	0.64	0.53	0.78	0.93	28.1			
100	14.6	7.00	1.89	69.3	87.6	57.6	2.49	13.3	35.8	17.1	2.40	54.3	60.2	50.3	1.97	9.74			
105	2.22	1.23	4.57	57.1	79.9	56.2	3.25	2.68	5.33	2.97	2.64	65.4	86.3	57.9	2.82	1.02			
110	1.08	1.23	3.96	23.0	33.0	22.9	3.64	1.15	0.86	0.98	4.03	26.2	36.6	22.3	3.11	0.99			
115	1.05	1.08	2.90	11.0	14.3	10.9	2.77	1.06	0.93	0.94	3.14	12.5	15.5	10.8	2.65	1.00			
120	1.09	1.08	2.41	8.31	11.3	8.26	2.32	1.05	1.03	1.00	2.88	9.38	12.1	8.44	2.41	1.05			
125	1.08	1.05	1.94	6.38	8.24	6.32	1.82	1.03	1.08	1.04	2.49	7.65	9.11	7.18	2.00	1.08			
130	1.09	1.11	1.13	5.33	6.86	5.25	1.13	1.09	1.08	1.10	1.13	6.48	8.37	5.95	1.10	1.13			
135	1.17	1.18	1.28	3.09	5.35	3.08	1.24	1.15	1.12	1.11	1.14	3.77	5.79	3.18	1.16	1.13			
140	1.28	1.30	1.37	1.34	1.35	1.40	1.40	1.25	1.12	1.10	1.22	1.23	1.17	1.16	1.18	1.15			
145	1.52	1.56	1.56	1.55	1.54	1.58	1.58	1.51	1.10	1.18	1.20	1.21	1.18	1.15	1.18	1.21			
150	1.66	1.71	1.73	1.70	1.67	1.73	1.78	1.72	1.22	1.19	1.17	1.19	1.14	1.15	1.15	1.18			
155	1.81	1.86	1.83	1.80	1.80	1.88	1.92	1.87	1.26	1.22	1.21	1.24	1.21	1.18	1.15	1.25			
160	1.94	1.95	1.91	1.93	1.88	1.99	2.03	1.98	1.32	1.30	1.27	1.23	1.26	1.19	1.13	1.29			
165	1.91	1.90	1.85	1.81	1.86	1.92	1.90	1.92	1.36	1.36	1.30	1.28	1.28	1.22	1.16	1.33			
170	1.83	1.80	1.76	1.70	1.72	1.79	1.86	1.83	1.33	1.33	1.29	1.31	1.26	1.20	1.20	1.32			
175	1.78	1.72	1.71	1.63	1.63	1.68	1.76	1.79	1.51	1.50	1.47	1.41	1.36	1.30	1.34	1.43			
180	1.56	1.54	1.50	1.45	1.46	1.49	1.56	1.58	1.61	1.61	1.56	1.52	1.47	1.47	1.49	1.57			

C Range: 0 - 360DEG
 C Interval: 22.5DEG
 Test Speed: 10.0deg/s
 Temperature:25.2DEG
 Operators:ben
 Test Date:2018-01-20

γ Range: 0 - 180DEG
 γ Interval: 1.0DEG
 Test System:EVERFINE GO-R5000_V2 SYSTEM V2.0.351
 Humidity:45%
 Test Distance:2.451m [K=1.0000]
 Remarks: