
P.Q.L., Inc. 6 LAMPS

LumCAT: 6 LAMPS	Luminaire: 4000K
Report No: /	Voltage(V):
Test No:	Current(A):
LampCAT: LED 18WT8/40K/FR	Power (W): 105.700
Lamp flux(lm): 2137.4	PF:
Number of Lamps: 6	Ballast type:
Length(mm): 1200	Width(mm): 500
Phm Type: C	Height(mm): 150

Photometric Results

Lumens(lm): 12824.11
Efficiency(%): 100.00%
Lumens(lm)/Power(W): 121.33
Central intensity(cd): 3897.701
Maximum intensity(cd): 3897.701
Angle of maximum intensity: C=0.0 γ =0.0
Beam Angle(50%Imax): [H]Left=56.3 Right=54.8
[V]Left=60.8 Right=60.6
Field angle(10%Imax): [H]Left=85.1 Right=84.5
[V]Left=86.9 Right=86.9
Maximum s/h: C0_180=1.15 C90_270=1.23
Up flux rate of lamp(%): 8.26%
Down flux rate of lamp(%): 91.74%
Up flux rate of LUM(%): 8.26%
Down flux rate of LUM(%): 91.74%
CIE Type : Direct lighting
Output flux ratio in π solid angle : 67.058%

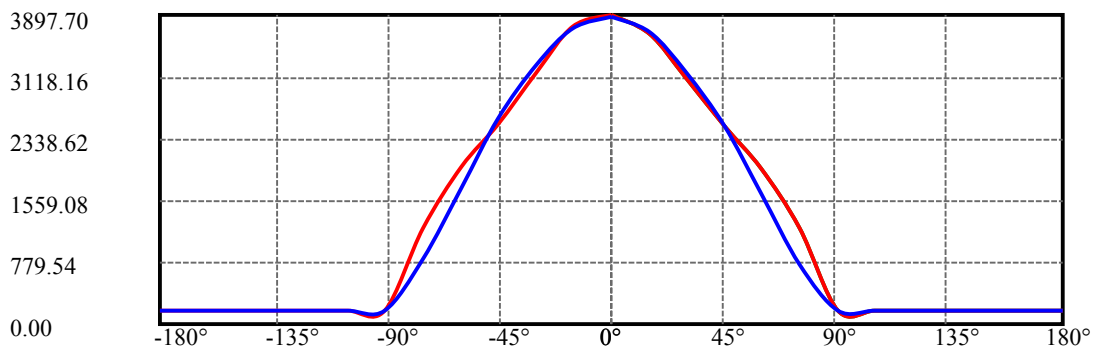
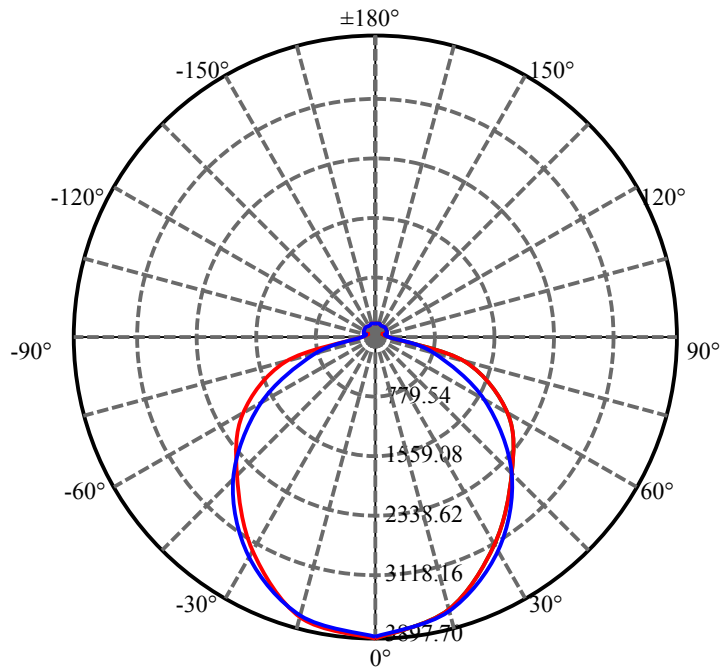
$\gamma(^{\circ})$	Average I(cd)	Zonal F(lm)	Sum F(lm)	Eff Flux(%)	Eff Sum(%)
0.0	3884.443	.000	.000	.000%	.000%
15.0	3697.891	811.668	811.668	6.329%	6.329%
30.0	3187.479	2160.949	2972.617	16.851%	23.180%
45.0	2499.983	2839.508	5812.125	22.142%	45.322%
60.0	1784.079	2787.404	8599.529	21.736%	67.058%
75.0	1053.023	2149.650	10749.180	16.763%	83.820%
90.0	196.021	1015.603	11764.780	7.919%	91.740%
105.0	161.931	291.052	12055.830	2.270%	94.009%
120.0	162.878	246.105	12301.940	1.919%	95.928%
135.0	163.825	212.567	12514.510	1.658%	97.586%
150.0	169.506	166.418	12680.920	1.298%	98.883%
165.0	170.453	106.695	12787.620	.832%	99.715%
180.0	170.453	36.493	12824.110	.285%	100.000%

ZONAL LUMEN SUMMARY

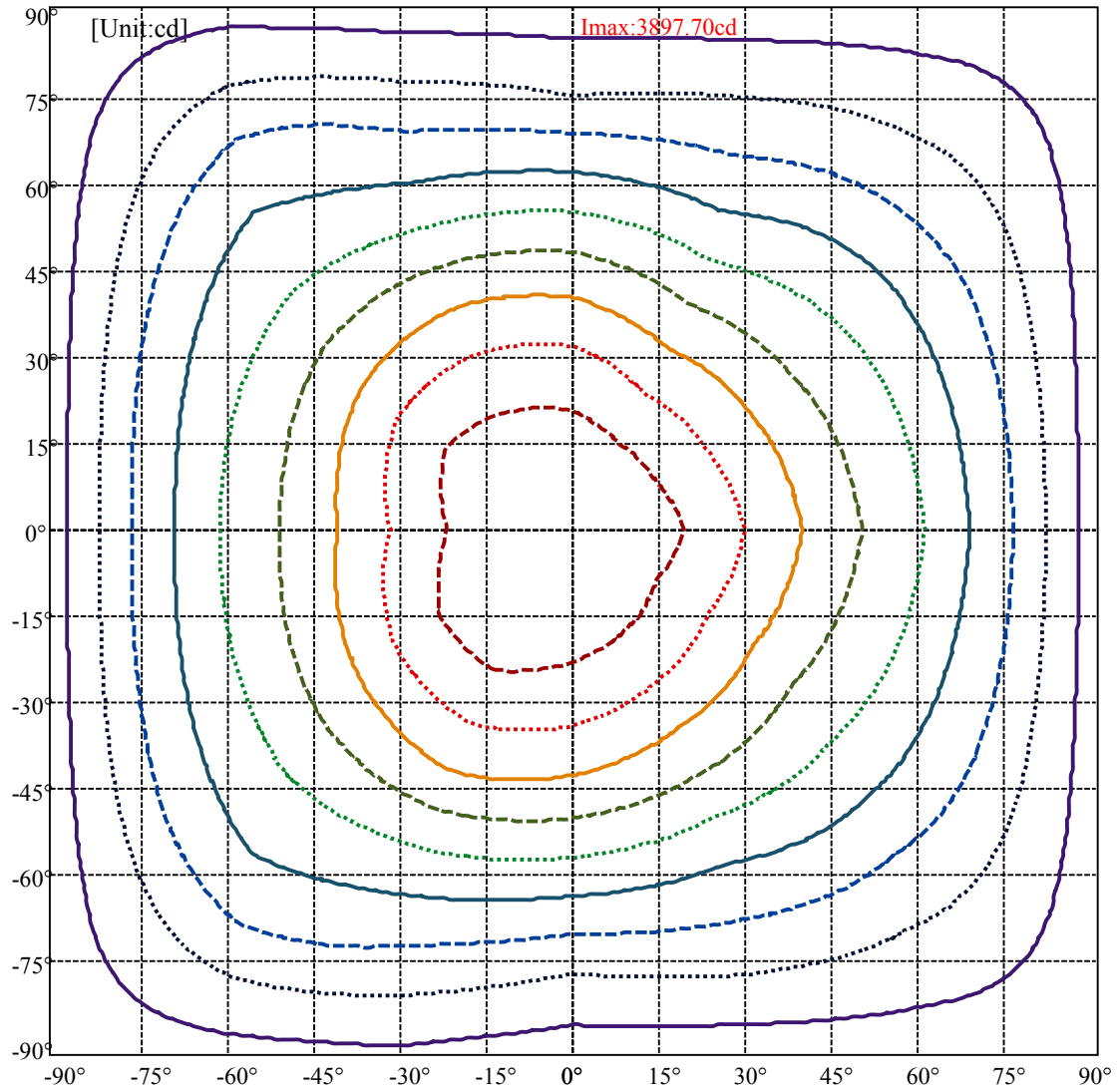
Zone	Lumens	%Lamp	%Fixt
0-30	2972.62	23.18%	23.18%
0-40	2972.62	23.18%	23.18%
0-60	8599.53	67.06%	67.06%
0-90	11764.78	91.74%	91.74%
90-120	537.16	4.19%	4.19%
90-130	537.16	4.19%	4.19%
90-150	916.14	7.14%	7.14%
90-180	1022.84	7.98%	7.98%
0-180	12824.11	100.00%	100.00%

ZONAL LUMEN SUMMARY

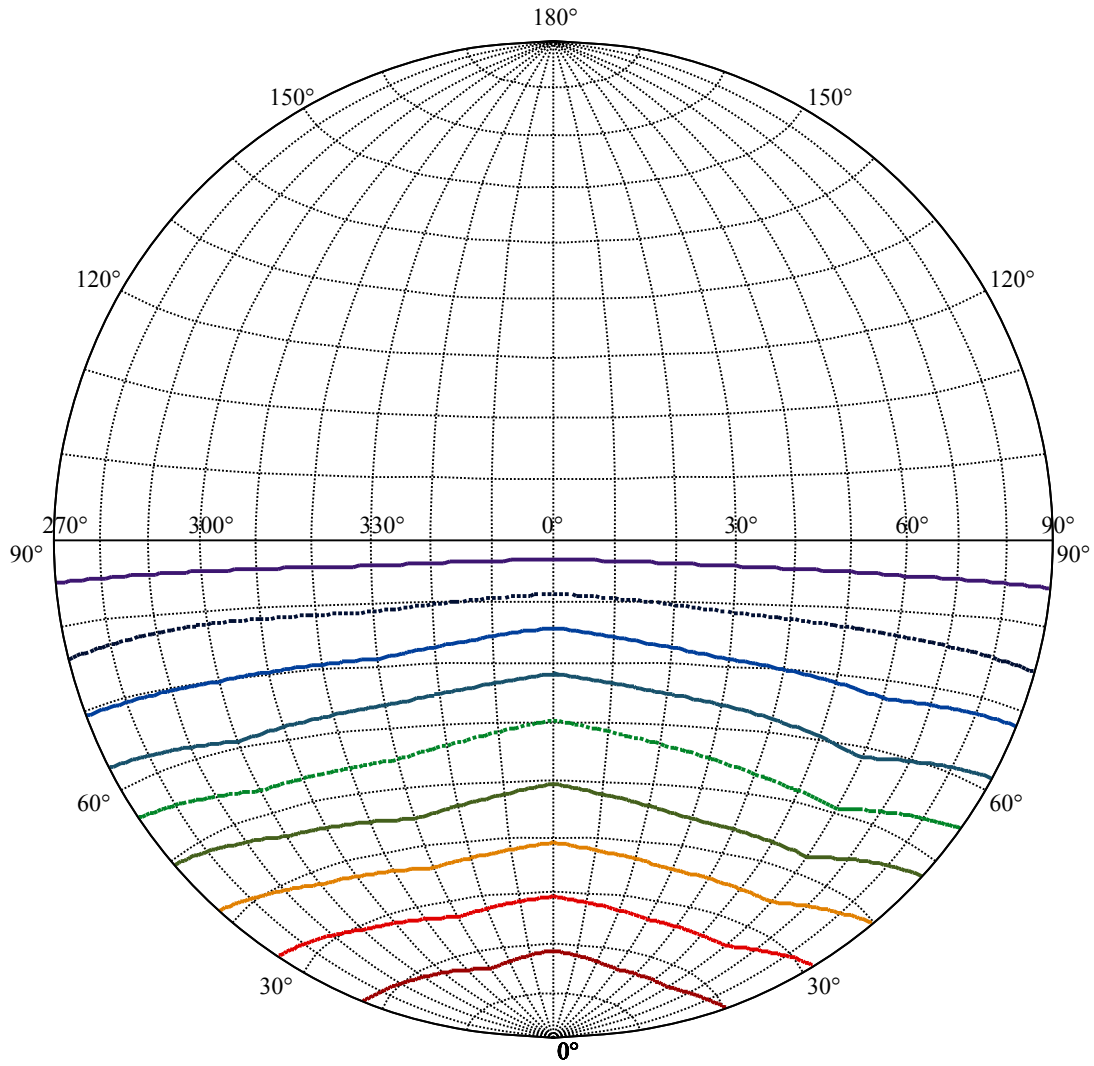
0-10	0.00
10-20	811.67
20-30	2160.95
30-40	0.00
40-50	2839.51
50-60	2787.40
60-70	0.00
70-80	2149.65
80-90	1015.60
90-100	0.00
100-110	291.05
110-120	246.10
120-130	0.00
130-140	212.57
140-150	166.42
150-160	0.00
160-170	106.69
170-180	0.00



C0(Max): —
C0/C180: —
C90/C270: —



(10%Imax)	388.861	— (solid purple)
(20%Imax)	777.722	⋯ (dotted black)
(30%Imax)	1166.58	- - - (dashed blue)
(40%Imax)	1555.44	— (solid dark blue)
(50%Imax)	1944.31	⋯ (dotted green)
(60%Imax)	2333.17	- - - (dashed dark green)
(70%Imax)	2722.03	— (solid orange)
(80%Imax)	3110.89	⋯ (dotted red)
(90%Imax)	3499.75	- - - (dashed red)

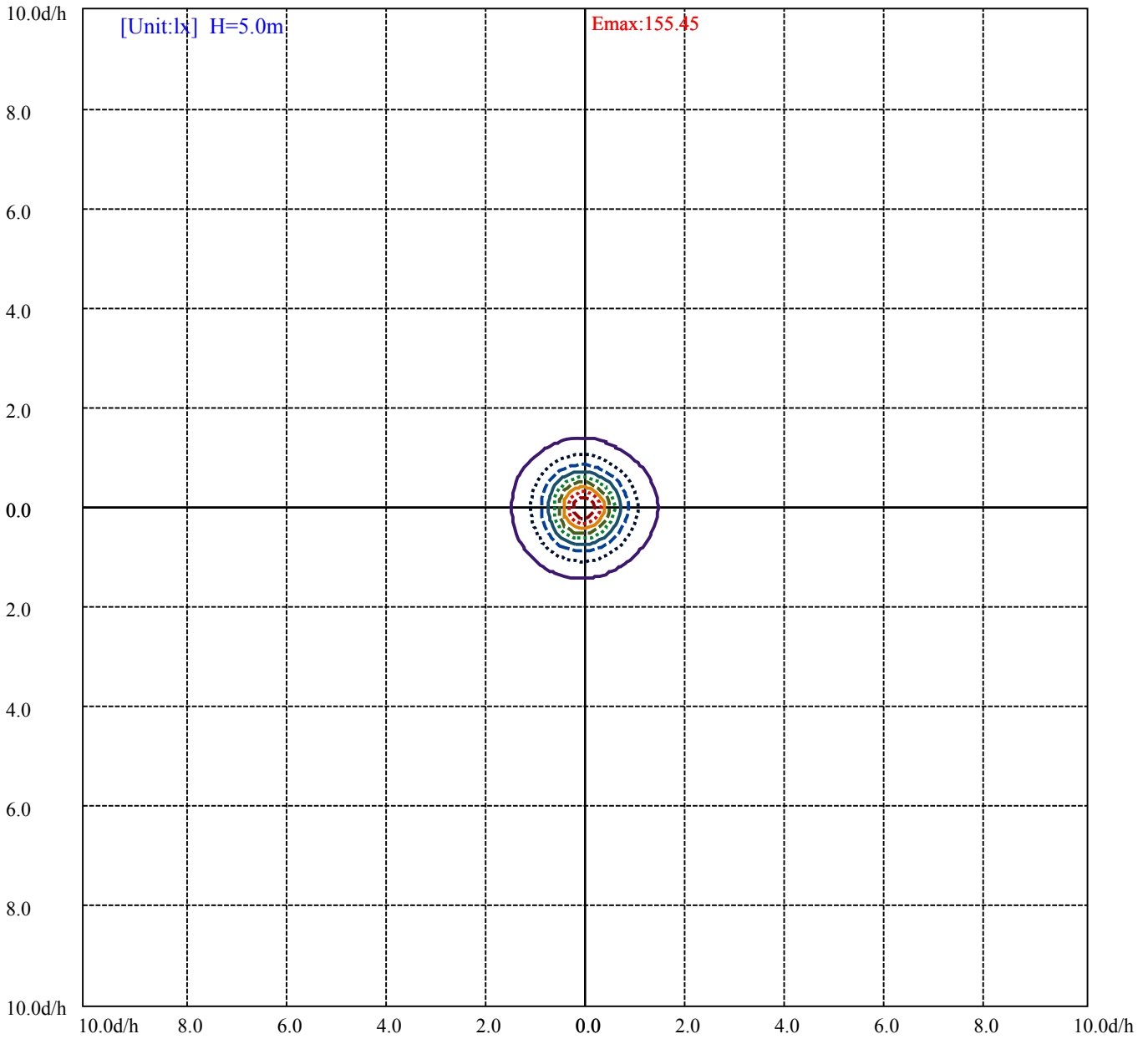


House

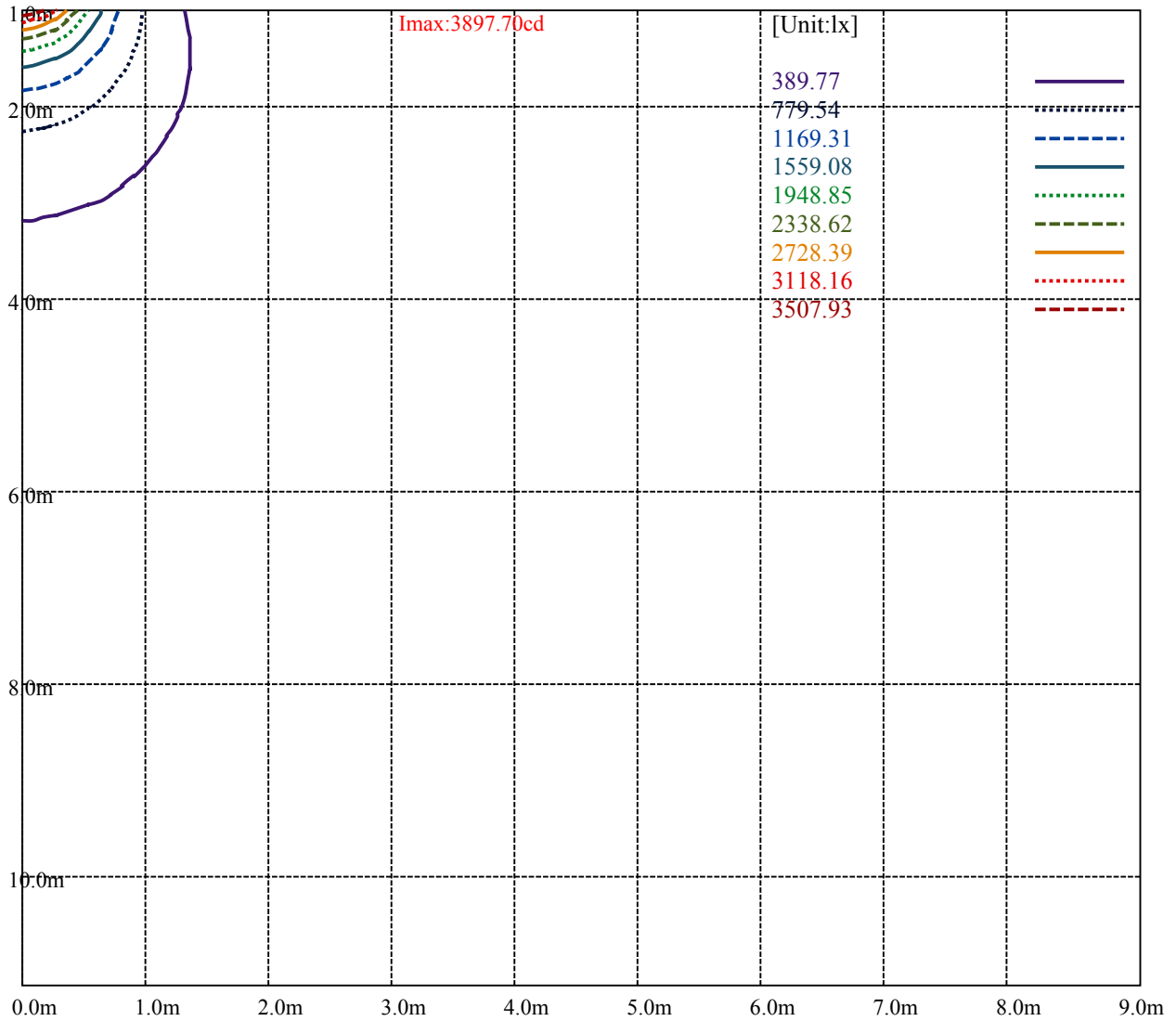
Road

I_{max}:3897.70cd

(10%I _{max}) 389.77	—
(20%I _{max}) 779.54	⋯
(30%I _{max}) 1169.31	- - -
(40%I _{max}) 1559.08	—
(50%I _{max}) 1948.85	⋯
(60%I _{max}) 2338.62	- - -
(70%I _{max}) 2728.39	—
(80%I _{max}) 3118.16	⋯
(90%I _{max}) 3507.93	- - -



- (10%Emax) 15.54532 ————
- (20%Emax) 31.09064 ······
- (30%Emax) 46.636 - - - - -
- (40%Emax) 62.1812 ————
- (50%Emax) 77.7268 ······
- (60%Emax) 93.272 - - - - -
- (70%Emax) 108.8172 ————
- (80%Emax) 124.3628 ······
- (90%Emax) 139.908 - - - - -



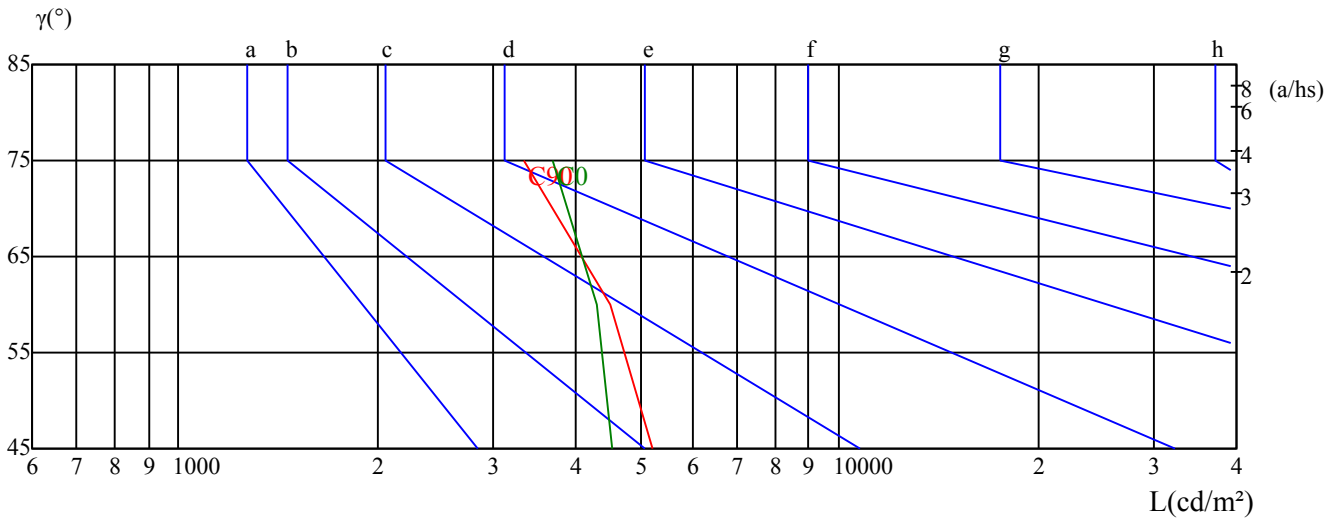
Luminance Table

γ	45	50	55	60	65	70	75	80	85
C0	4533	0	0	4312	0	0	3694	0	0
C45	0	0	0	0	0	0	0	0	0
C90	5214	0	0	4515	0	0	3343	0	0

Glare Table

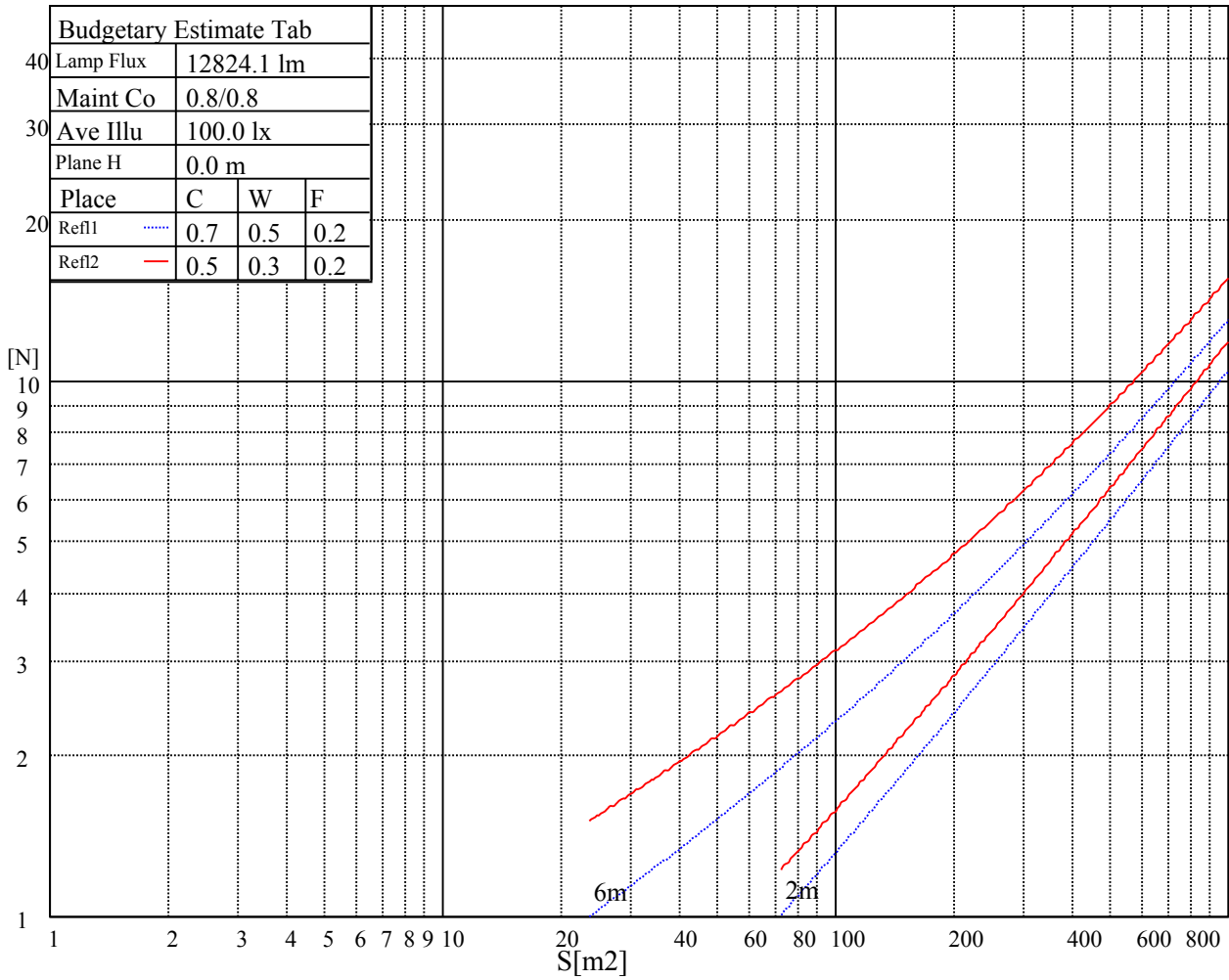
Glare	Quality	Service Values Illuminance(lx)							
1.15	A	2000	1000	500	<=300				
1.5	B		2000	1000	500	<=300			
1.85	C			2000	1000	500	<=300		
2.2	D				2000	1000	500	<=300	
2.55	E					2000	1000	500	<=300
		a	b	c	d	e	f	g	h

Luminance Limiting Curve

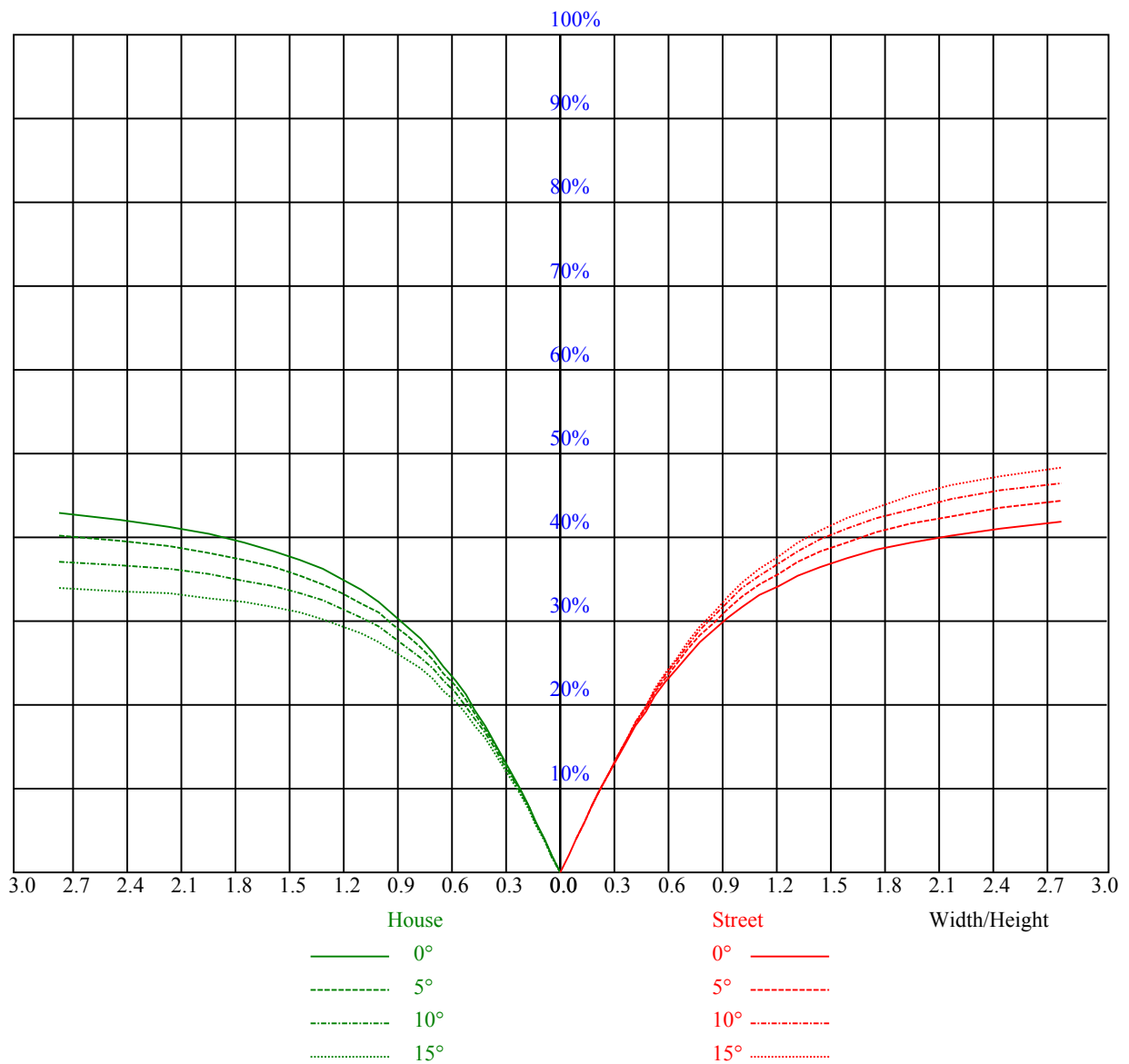


Illuminatin assessment according UGR											
Rf of Ceiling	70	70	50	50	30	70	70	50	50	30	
Rf of Wall	50	30	50	30	30	50	30	50	30	30	
Rf of Floor	20	20	20	20	20	20	20	20	20	20	
Room dimensions		Viewed crosswise					Viewed endwise				
X	Y										
2H	2H	7.9	9.4	8.3	9.8	10.3	7.3	8.8	7.7	9.2	9.7
	3H	9.9	11.3	10.3	11.7	12.2	9.0	10.3	9.4	10.8	11.3
	4H	10.6	11.8	11.1	12.3	12.8	9.5	10.7	10.0	11.2	11.7
	6H	11.4	12.6	11.9	13.1	13.6	10.2	11.4	10.7	11.8	12.4
	8H	11.7	12.9	12.2	13.4	13.9	10.5	11.7	11.0	12.2	12.7
	12H	11.7	12.7	12.3	13.2	13.8	10.5	11.4	11.0	12.0	12.6
4H	2H	8.2	9.4	8.7	9.9	10.4	7.7	8.9	8.3	9.4	10.0
	3H	10.3	11.3	10.9	11.9	12.5	9.6	10.5	10.1	11.1	11.7
	4H	11.5	12.4	12.0	13.0	13.6	10.5	11.5	11.0	12.0	12.6
	6H	12.4	13.4	13.0	13.9	14.5	11.3	12.3	11.9	12.8	13.4
	8H	12.6	13.2	13.2	13.8	14.5	11.4	12.1	12.1	12.7	13.4
	12H	12.9	13.5	13.5	14.1	14.8	11.8	12.4	12.4	13.1	13.7
8H	4H	11.6	12.3	12.2	12.9	13.6	10.7	11.4	11.4	12.0	12.7
	6H	12.7	13.4	13.3	14.0	14.7	11.7	12.4	12.4	13.0	13.7
	8H	13.2	13.8	13.8	14.5	15.2	12.2	12.9	12.8	13.5	14.2
	12H	13.6	14.2	14.2	14.9	15.6	12.6	13.3	13.2	13.9	14.6
12H	4H	11.7	12.3	12.3	12.9	13.6	10.8	11.5	11.5	12.1	12.8
	6H	12.8	13.5	13.4	14.1	14.8	11.9	12.5	12.5	13.2	13.9
	8H	13.3	14.0	13.9	14.6	15.3	12.4	13.1	13.0	13.7	14.4
Variation with the observer position at spacings:											
S = 1.0H	0.2/-0.8					0.2/-0.6					
S = 1.5H	0.6/-0.5					0.5/-0.6					
S = 2.0H	0.7/-0.5					0.6/-0.6					
Standard tables:	BKBF					BKBF					
Uncorrected UGR	-2.1					-2.9					
According 1000lm											

五、灯具的概算曲线



RHOCC	80			70			50			30			10			0
RHOW	50	30	10	50	30	10	50	30	10	50	30	10	50	30	10	0
RCR	COEFFICIENTS OF UTILIZATION RHOF=20 CU															
0	1.17	1.17	1.17	1.13	1.13	1.13	1.07	1.07	1.07	1.00	1.00	1.00	0.94	0.94	0.94	0.92
1	0.91	0.84	0.78	0.88	0.81	0.75	0.82	0.76	0.71	0.76	0.72	0.68	0.71	0.67	0.64	0.61
2	0.78	0.69	0.61	0.75	0.67	0.60	0.70	0.63	0.57	0.65	0.59	0.54	0.61	0.56	0.52	0.49
3	0.67	0.57	0.49	0.65	0.56	0.48	0.61	0.53	0.46	0.57	0.50	0.44	0.53	0.47	0.42	0.39
4	0.59	0.48	0.40	0.57	0.47	0.39	0.53	0.45	0.38	0.49	0.42	0.36	0.46	0.40	0.35	0.32
5	0.51	0.41	0.33	0.50	0.40	0.33	0.46	0.38	0.31	0.43	0.36	0.30	0.41	0.34	0.29	0.26
6	0.45	0.35	0.28	0.44	0.34	0.27	0.41	0.33	0.26	0.39	0.31	0.25	0.36	0.30	0.25	0.22
7	0.40	0.31	0.24	0.39	0.30	0.23	0.37	0.28	0.22	0.35	0.27	0.22	0.32	0.26	0.21	0.19
8	0.36	0.27	0.20	0.35	0.26	0.20	0.33	0.25	0.19	0.31	0.24	0.19	0.29	0.23	0.18	0.16
9	0.33	0.24	0.18	0.32	0.23	0.17	0.30	0.22	0.17	0.28	0.21	0.16	0.27	0.20	0.16	0.14
10	0.30	0.21	0.16	0.29	0.21	0.15	0.28	0.20	0.15	0.26	0.19	0.15	0.25	0.18	0.14	0.12



Intensity data(cd)

C/γ(°)	0.0	15.0	30.0	45.0	60.0	75.0	90.0	105.0	120.0
0.0	3897.70	3647.70	3090.89	2499.98	1965.90	1215.90	170.45	159.09	159.09
30.0	3897.70	3556.79	2977.25	2329.53	1761.35	965.90	170.45	159.09	170.45
60.0	3874.97	3568.16	2954.53	2227.26	1488.63	840.90	159.09	159.09	170.45
90.0	3874.97	3681.79	3181.80	2488.62	1647.72	761.36	170.45	159.09	159.09
120.0	3874.97	3738.61	3295.43	2602.26	1715.90	977.27	181.82	170.45	170.45
150.0	3886.34	3818.16	3374.98	2613.62	1931.81	1397.72	250.00	170.45	159.09
180.0	3897.70	3761.34	3170.43	2522.71	1977.26	1215.90	170.45	159.09	170.45
210.0	3897.70	3840.88	3409.07	2647.71	1977.26	1409.08	250.00	159.09	159.09
240.0	3874.97	3806.79	3431.80	2749.98	1863.62	1102.27	329.54	170.45	159.09
270.0	3874.97	3738.61	3272.71	2590.89	1727.26	829.54	170.45	159.09	159.09
300.0	3874.97	3659.07	3090.89	2397.71	1602.26	943.18	159.09	159.09	159.09
330.0	3886.34	3556.79	2999.98	2329.53	1749.99	977.27	170.45	159.09	159.09
360.0	3897.70	3647.70	3090.89	2499.98	1965.90	1215.90	170.45	159.09	159.09
C/γ(°)	135.0	150.0	165.0	180.0					
0.0	159.09	170.45	170.45	170.45					
30.0	170.45	170.45	170.45	170.45					
60.0	170.45	170.45	170.45	170.45					
90.0	170.45	170.45	170.45	170.45					
120.0	159.09	170.45	170.45	170.45					
150.0	159.09	170.45	170.45	170.45					
180.0	170.45	170.45	170.45	170.45					
210.0	170.45	170.45	170.45	170.45					
240.0	159.09	159.09	170.45	170.45					
270.0	159.09	170.45	170.45	170.45					
300.0	159.09	170.45	170.45	170.45					
330.0	159.09	170.45	170.45	170.45					
360.0	159.09	170.45	170.45	170.45					