
P.Q.L., Inc. 6 LAMPS

LumCAT: 6 LAMPS	Luminaire: 5000K
Report No: /	Voltage(V):
Test No:	Current(A):
LampCAT: LED 18WT8/50K/FR	Power (W): 105.800
Lamp flux(lm): 2267.4	PF:
Number of Lamps: 6	Ballast type:
Length(mm): 1200	Width(mm): 500
Phm Type: C	Height(mm): 150

Photometric Results

Lumens(lm): 13604.41
Efficiency(%): 100.00%
Lumens(lm)/Power(W): 128.59
Central intensity(cd): 4204.517
Maximum intensity(cd): 4204.517
Angle of maximum intensity: C=0.0 γ =0.0
Beam Angle(50%Imax): [H]Left=56.1 Right=54.8
[V]Left=60.6 Right=60.0
Field angle(10%Imax): [H]Left=85.0 Right=84.2
[V]Left=86.7 Right=86.7
Maximum s/h: C0_180=1.12 C90_270=1.23
Up flux rate of lamp(%): 7.93%
Down flux rate of lamp(%): 92.07%
Up flux rate of LUM(%): 7.93%
Down flux rate of LUM(%): 92.07%
CIE Type : Direct lighting
Output flux ratio in π solid angle : 67.394%

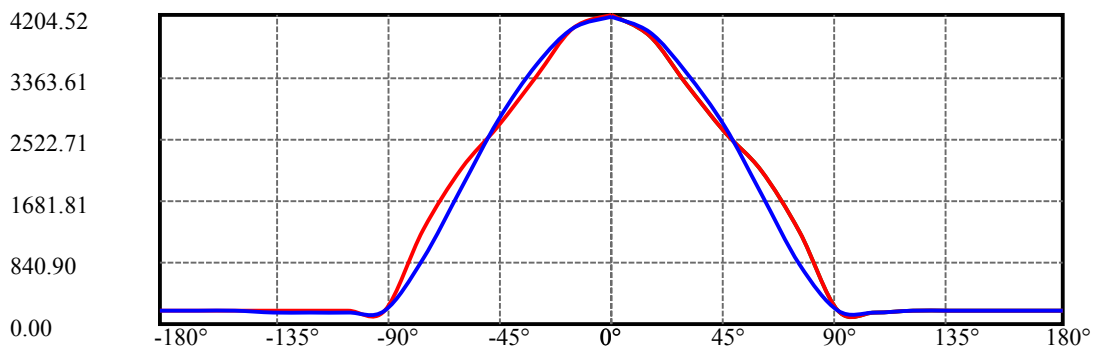
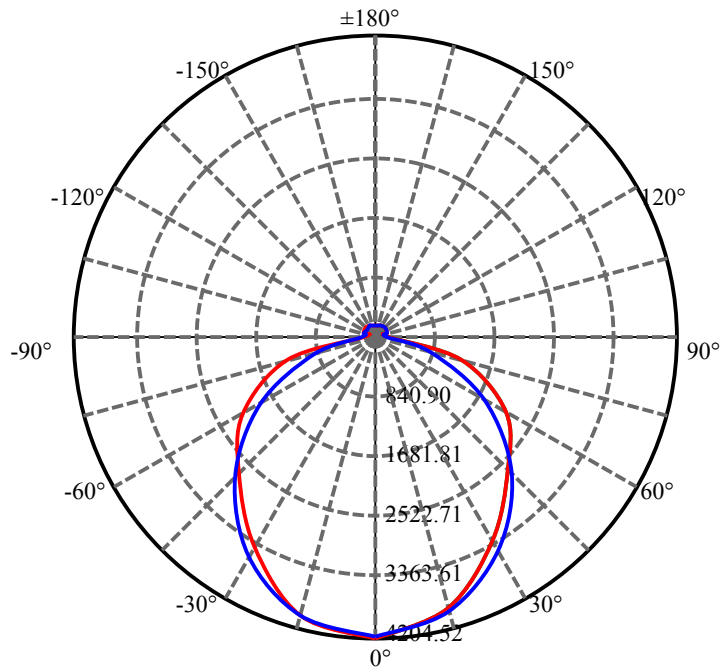
$\gamma(^{\circ})$	Average I(cd)	Zonal F(lm)	Sum F(lm)	Eff Flux(%)	Eff Sum(%)
0.0	4185.578	.000	.000	.000%	.000%
15.0	3970.617	873.098	873.098	6.418%	6.418%
30.0	3395.811	2311.927	3185.025	16.994%	23.412%
45.0	2654.338	3020.582	6205.607	22.203%	45.615%
60.0	1899.608	2963.003	9168.610	21.780%	67.394%
75.0	1115.523	2284.542	11453.150	16.793%	84.187%
90.0	203.597	1072.581	12525.730	7.884%	92.071%
105.0	162.878	297.982	12823.710	2.190%	94.262%
120.0	165.718	248.975	13072.690	1.830%	96.092%
135.0	169.506	218.112	13290.800	1.603%	97.695%
150.0	170.453	169.727	13460.530	1.248%	98.942%
165.0	171.400	107.289	13567.820	.789%	99.731%
180.0	170.453	36.594	13604.410	.269%	100.000%

ZONAL LUMEN SUMMARY

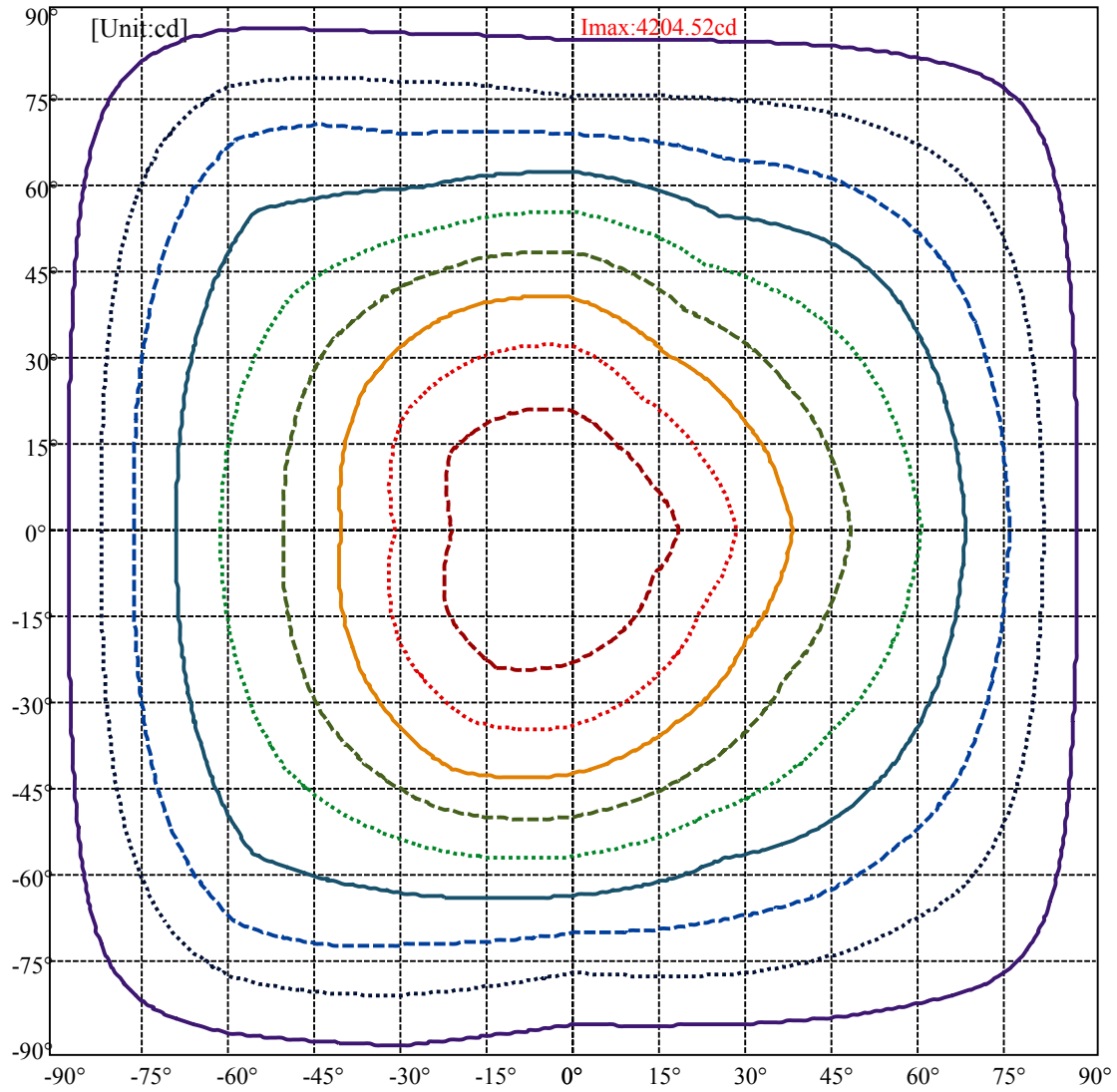
Zone	Lumens	%Lamp	%Fixt
0-30	3185.03	23.41%	23.41%
0-40	3185.03	23.41%	23.41%
0-60	9168.61	67.39%	67.39%
0-90	12525.73	92.07%	92.07%
90-120	546.96	4.02%	4.02%
90-130	546.96	4.02%	4.02%
90-150	934.80	6.87%	6.87%
90-180	1042.09	7.66%	7.66%
0-180	13604.41	100.00%	100.00%

ZONAL LUMEN SUMMARY

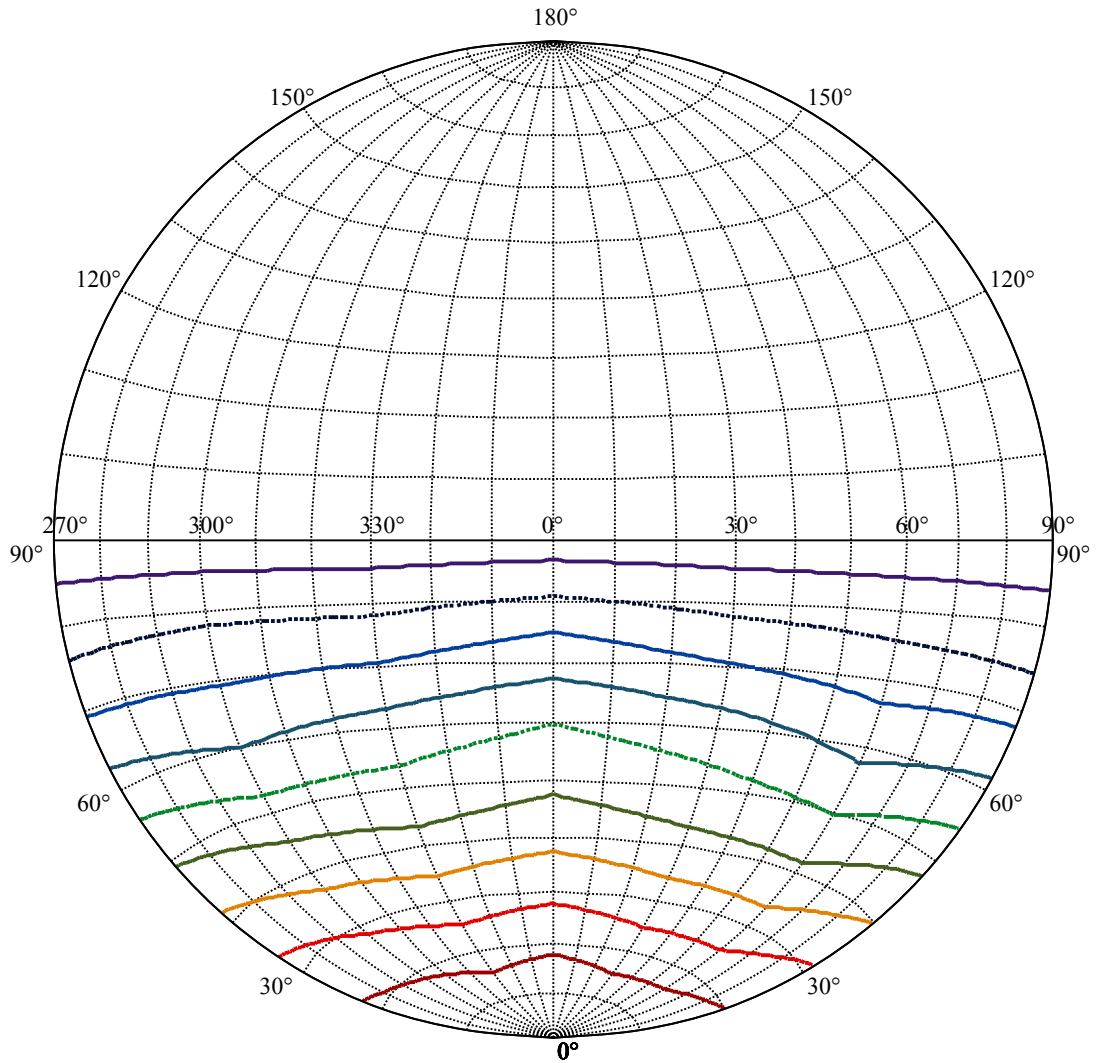
0-10	0.00
10-20	873.10
20-30	2311.93
30-40	0.00
40-50	3020.58
50-60	2963.00
60-70	0.00
70-80	2284.54
80-90	1072.58
90-100	0.00
100-110	297.98
110-120	248.97
120-130	0.00
130-140	218.11
140-150	169.73
150-160	0.00
160-170	107.29
170-180	0.00



C0(Max): —
 C0/C180: —
 C90/C270: —



- (10%Imax) 419.164
- (20%Imax) 838.328
- (30%Imax) 1257.49
- (40%Imax) 1676.66
- (50%Imax) 2095.82
- (60%Imax) 2514.98
- (70%Imax) 2934.15
- (80%Imax) 3353.31
- (90%Imax) 3772.47

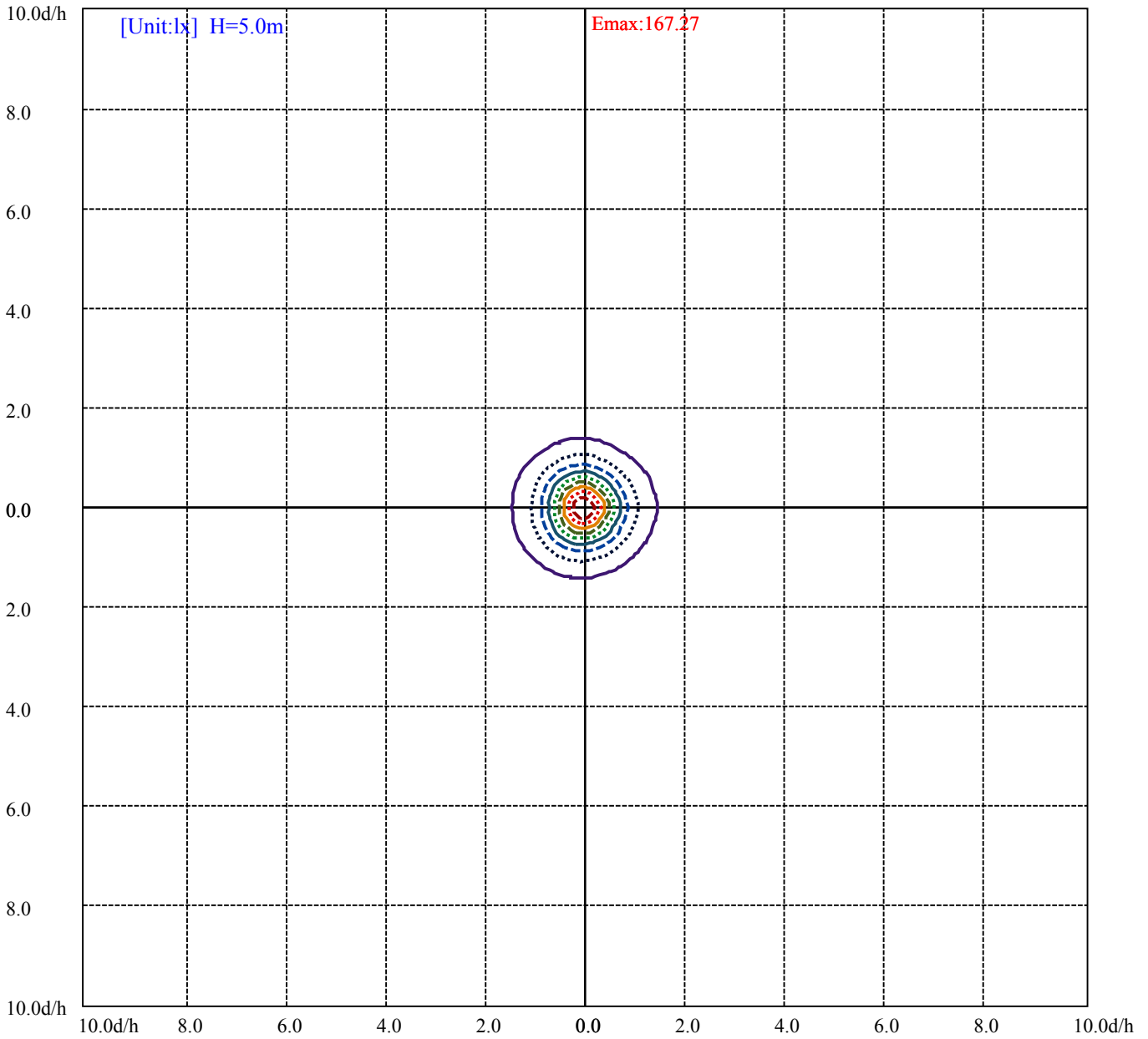


House

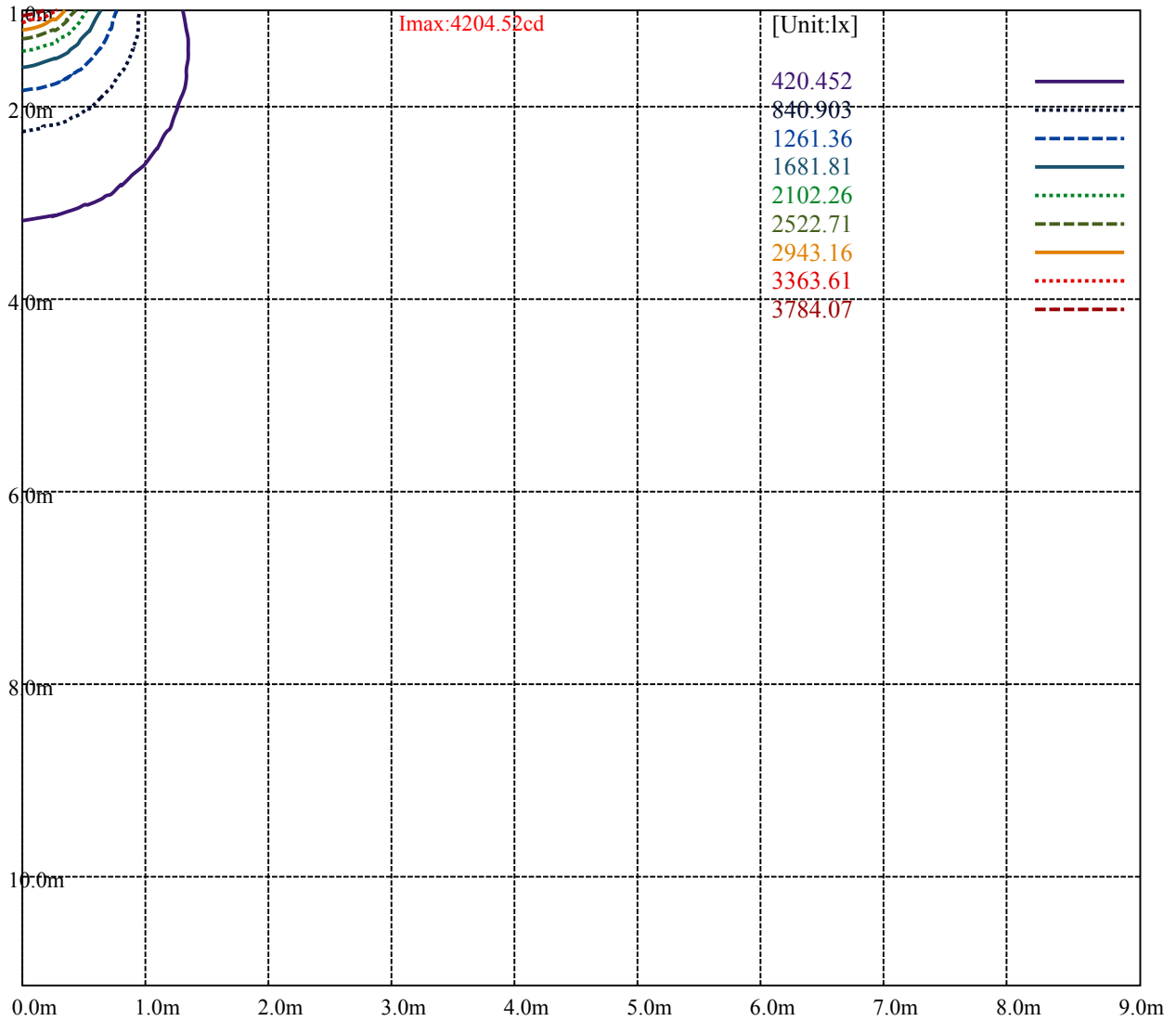
Road

I_{max}:4204.52cd

(10%I _{max}) 420.452	—
(20%I _{max}) 840.903	·····
(30%I _{max}) 1261.36	- - - - -
(40%I _{max}) 1681.81	—
(50%I _{max}) 2102.26	·····
(60%I _{max}) 2522.71	- - - - -
(70%I _{max}) 2943.16	—
(80%I _{max}) 3363.61	·····
(90%I _{max}) 3784.07	- - - - -



- (10%Emax) 16.72712 ————
- (20%Emax) 33.45428 ······
- (30%Emax) 50.1812 - - - - -
- (40%Emax) 66.9084 ————
- (50%Emax) 83.6356 ······
- (60%Emax) 100.3628 - - - - -
- (70%Emax) 117.09 ————
- (80%Emax) 133.8172 ······
- (90%Emax) 150.544 - - - - -



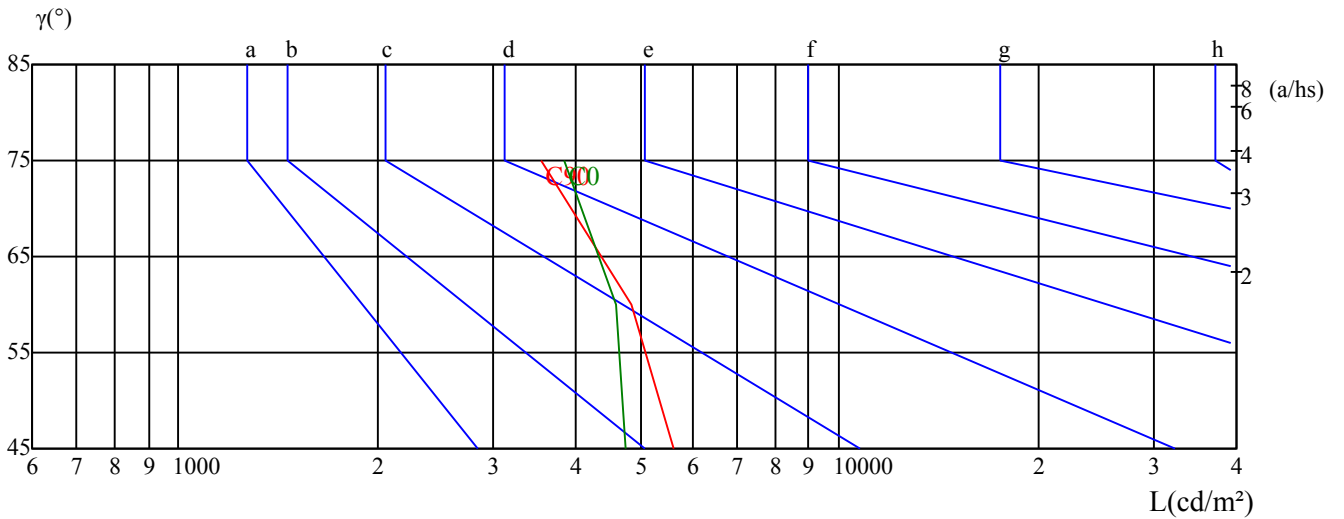
Luminance Table

γ	45	50	55	60	65	70	75	80	85
C0	4739	0	0	4586	0	0	3832	0	0
C45	0	0	0	0	0	0	0	0	0
C90	5619	0	0	4857	0	0	3543	0	0

Glare Table

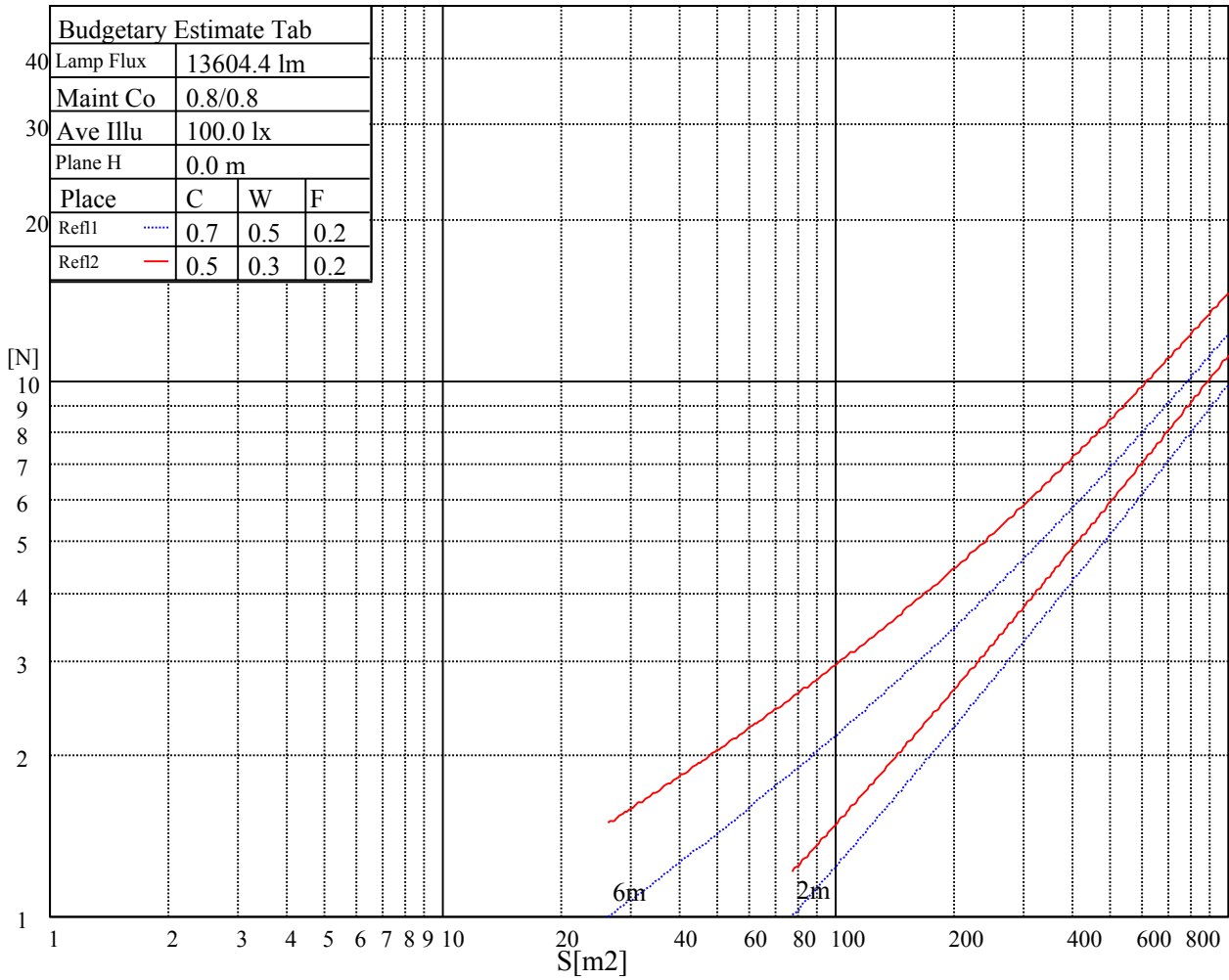
Glare	Quality	Service Values Illuminance(lx)							
1.15	A	2000	1000	500	<=300				
1.5	B		2000	1000	500	<=300			
1.85	C			2000	1000	500	<=300		
2.2	D				2000	1000	500	<=300	
2.55	E					2000	1000	500	<=300
		a	b	c	d	e	f	g	h

Luminance Limiting Curve

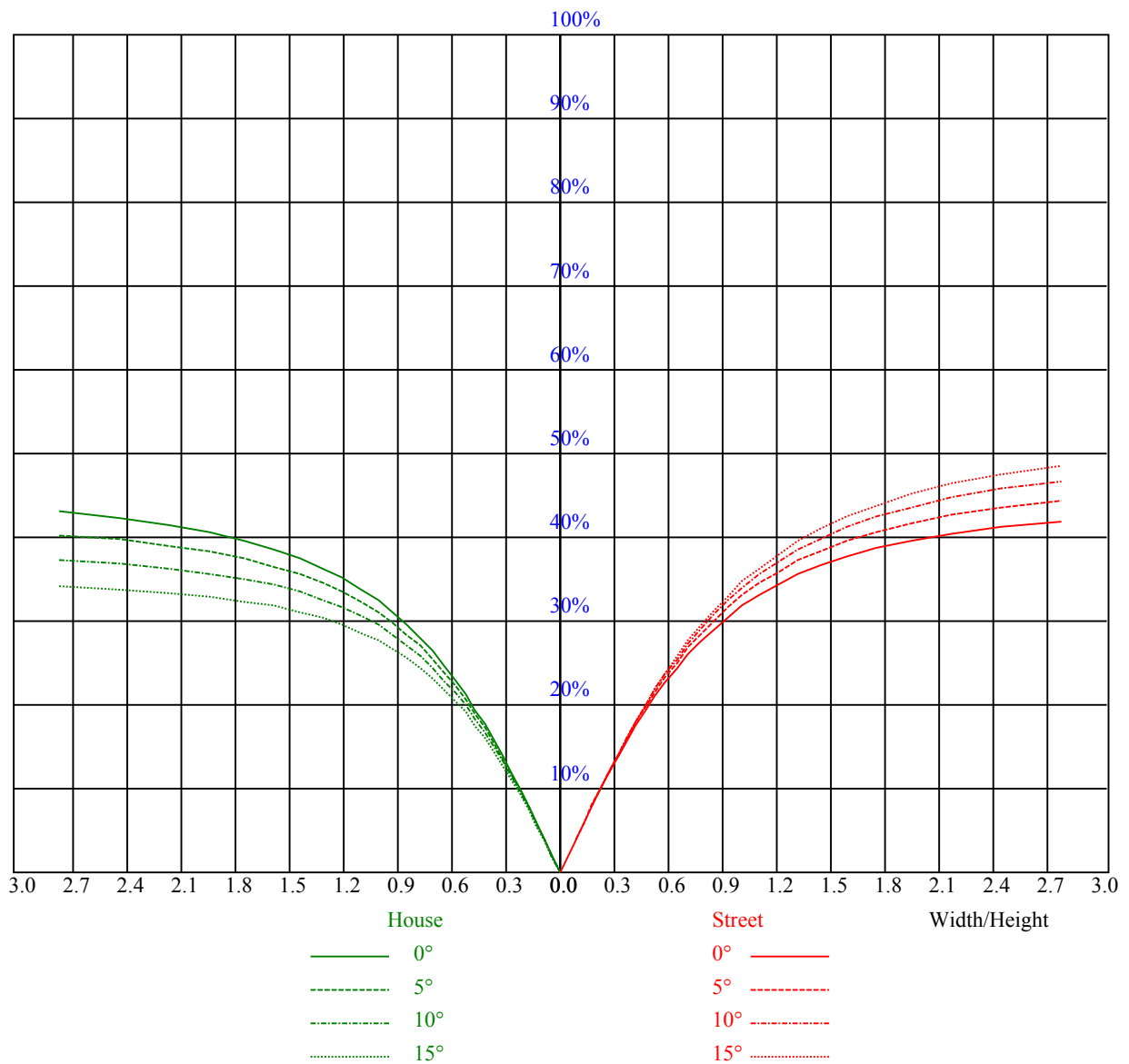


Illuminatin assessment according UGR											
Rf of Ceiling	70	70	50	50	30	70	70	50	50	30	
Rf of Wall	50	30	50	30	30	50	30	50	30	30	
Rf of Floor	20	20	20	20	20	20	20	20	20	20	
Room dimensions		Viewed crosswise					Viewed endwise				
X	Y										
2H	2H	7.9	9.4	8.3	9.8	10.2	7.3	8.8	7.7	9.2	9.7
	3H	9.8	11.2	10.3	11.7	12.1	9.0	10.4	9.5	10.8	11.3
	4H	10.5	11.7	11.0	12.2	12.7	9.5	10.7	10.0	11.2	11.7
	6H	11.3	12.5	11.8	13.0	13.5	10.2	11.4	10.7	11.8	12.4
	8H	11.6	12.8	12.1	13.3	13.9	10.5	11.7	11.0	12.1	12.7
	12H	11.6	12.6	12.2	13.1	13.7	10.5	11.4	11.0	12.0	12.6
4H	2H	8.2	9.4	8.7	9.9	10.4	7.8	9.0	8.3	9.4	10.0
	3H	10.3	11.3	10.9	11.8	12.4	9.6	10.5	10.1	11.1	11.7
	4H	11.4	12.4	12.0	12.9	13.5	10.5	11.5	11.0	12.0	12.6
	6H	12.3	13.3	12.9	13.8	14.4	11.3	12.3	11.8	12.8	13.4
	8H	12.5	13.1	13.1	13.8	14.4	11.4	12.1	12.0	12.7	13.4
	12H	12.8	13.4	13.4	14.1	14.7	11.7	12.4	12.4	13.0	13.7
8H	4H	11.5	12.2	12.2	12.8	13.5	10.7	11.4	11.3	12.0	12.7
	6H	12.6	13.3	13.2	13.9	14.6	11.7	12.4	12.3	13.0	13.7
	8H	13.1	13.7	13.7	14.4	15.0	12.2	12.8	12.8	13.4	14.1
	12H	13.5	14.1	14.1	14.8	15.4	12.6	13.2	13.2	13.9	14.5
12H	4H	11.6	12.3	12.2	12.9	13.6	10.8	11.5	11.4	12.1	12.8
	6H	12.7	13.4	13.3	14.0	14.7	11.8	12.5	12.4	13.1	13.8
	8H	13.2	13.9	13.8	14.5	15.2	12.3	13.0	13.0	13.6	14.3
Variation with the observer position at spacings:											
S = 1.0H		0.2/-0.8					0.2/-0.6				
S = 1.5H		0.6/-0.5					0.5/-0.6				
S = 2.0H		0.8/-0.5					0.7/-0.6				
Standard tables:		BKBF					BKBF				
Uncorrected UGR		-2.1					-2.9				
According 1000lm											

五、灯具的概算曲线



RHOCC	80			70			50			30			10			0
RHOW	50	30	10	50	30	10	50	30	10	50	30	10	50	30	10	0
RCR	COEFFICIENTS OF UTILIZATION RHOF=20 CU															
0	1.17	1.17	1.17	1.14	1.14	1.14	1.07	1.07	1.07	1.00	1.00	1.00	0.95	0.95	0.95	0.92
1	0.91	0.84	0.78	0.88	0.81	0.76	0.82	0.77	0.72	0.76	0.72	0.68	0.71	0.68	0.64	0.61
2	0.78	0.69	0.61	0.75	0.67	0.60	0.70	0.63	0.57	0.66	0.60	0.54	0.61	0.56	0.52	0.49
3	0.68	0.57	0.49	0.65	0.56	0.48	0.61	0.53	0.46	0.57	0.50	0.44	0.53	0.47	0.43	0.40
4	0.59	0.48	0.40	0.57	0.47	0.39	0.53	0.45	0.38	0.50	0.42	0.37	0.46	0.40	0.35	0.32
5	0.51	0.41	0.33	0.50	0.40	0.33	0.47	0.38	0.32	0.44	0.36	0.30	0.41	0.34	0.29	0.27
6	0.45	0.35	0.28	0.44	0.34	0.27	0.41	0.33	0.26	0.39	0.31	0.26	0.36	0.30	0.25	0.22
7	0.41	0.31	0.24	0.39	0.30	0.23	0.37	0.29	0.23	0.35	0.27	0.22	0.33	0.26	0.21	0.19
8	0.36	0.27	0.20	0.35	0.26	0.20	0.33	0.25	0.19	0.31	0.24	0.19	0.29	0.23	0.18	0.16
9	0.33	0.24	0.18	0.32	0.23	0.18	0.30	0.22	0.17	0.29	0.22	0.16	0.27	0.21	0.16	0.14
10	0.30	0.22	0.16	0.29	0.21	0.16	0.28	0.20	0.15	0.26	0.19	0.15	0.25	0.19	0.14	0.12



Intensity data(cd)

C/γ(°)	0.0	15.0	30.0	45.0	60.0	75.0	90.0	105.0	120.0
0.0	4204.52	3909.07	3272.71	2613.62	2090.90	1261.36	181.82	159.09	170.45
30.0	4193.15	3795.43	3136.34	2443.17	1874.99	999.99	170.45	170.45	170.45
60.0	4170.43	3829.52	3136.34	2340.89	1568.17	874.99	170.45	170.45	170.45
90.0	4181.79	3965.88	3431.80	2681.80	1772.72	806.81	170.45	159.09	170.45
120.0	4181.79	4034.06	3522.70	2772.71	1795.44	1045.45	193.18	159.09	170.45
150.0	4181.79	4102.25	3590.89	2795.44	2068.17	1511.35	250.00	170.45	159.09
180.0	4204.52	4011.34	3374.98	2693.16	2124.99	1284.08	170.45	170.45	170.45
210.0	4193.15	4124.97	3613.61	2818.16	2113.62	1522.72	261.36	159.09	159.09
240.0	4170.43	4102.25	3681.79	2943.16	1988.62	1181.81	352.27	159.09	159.09
270.0	4181.79	4022.70	3534.07	2772.71	1852.26	886.36	181.82	159.09	159.09
300.0	4181.79	3943.16	3295.43	2534.07	1681.81	999.99	170.45	159.09	159.09
330.0	4181.79	3806.79	3159.07	2443.17	1863.62	1011.36	170.45	159.09	170.45
360.0	4204.52	3909.07	3272.71	2613.62	2090.90	1261.36	181.82	159.09	170.45
C/γ(°)	135.0	150.0	165.0	180.0					
0.0	170.45	170.45	170.45	170.45					
30.0	170.45	170.45	170.45	170.45					
60.0	170.45	170.45	170.45	170.45					
90.0	170.45	170.45	170.45	170.45					
120.0	170.45	170.45	170.45	170.45					
150.0	170.45	170.45	181.82	170.45					
180.0	170.45	170.45	170.45	170.45					
210.0	170.45	170.45	170.45	170.45					
240.0	170.45	170.45	170.45	170.45					
270.0	159.09	170.45	170.45	170.45					
300.0	170.45	170.45	170.45	170.45					
330.0	170.45	170.45	170.45	170.45					
360.0	170.45	170.45	170.45	170.45					