
P.Q.L., Inc. 6 LAMPS

LumCAT: 6 LAMPS	Luminaire: 5000K
Report No: /	Voltage(V):
Test No:	Current(A):
LampCAT: LED SMD 4' 15WT8/50K/FR/V4/2000Lm	Power (W): 103.000
Lamp flux(lm)	PF:
Number of Lamps: 6	Ballast type:
Length(mm): 1200	Width(mm): 500
Phm Type: C	Height(mm): 150

Photometric Results

Lumens(lm): 12180.60
Lumens(lm)/Power(W): 118.26
Central intensity(cd): 3886.337
Maximum intensity(cd): 3886.337
Angle of maximum intensity: C=0.0 γ =0.0
Beam Angle(50%Imax): [H]Left=56.3 Right=54.6
[V]Left=57.6 Right=54.8
Field angle(10%Imax): [H]Left=85.1 Right=84.3
[V]Left=86.3 Right=87.2
Maximum s/h: C0_180=1.09 C90_270=1.23
Up flux rate of LUM(%): 8.47%
Down flux rate of LUM(%): 91.53%
CIE Type : Direct lighting
Output flux ratio in π solid angle : 67.133%

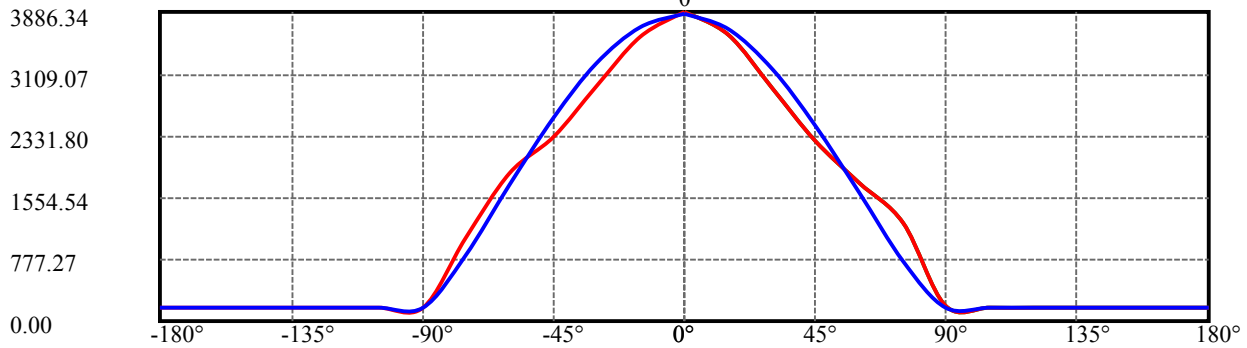
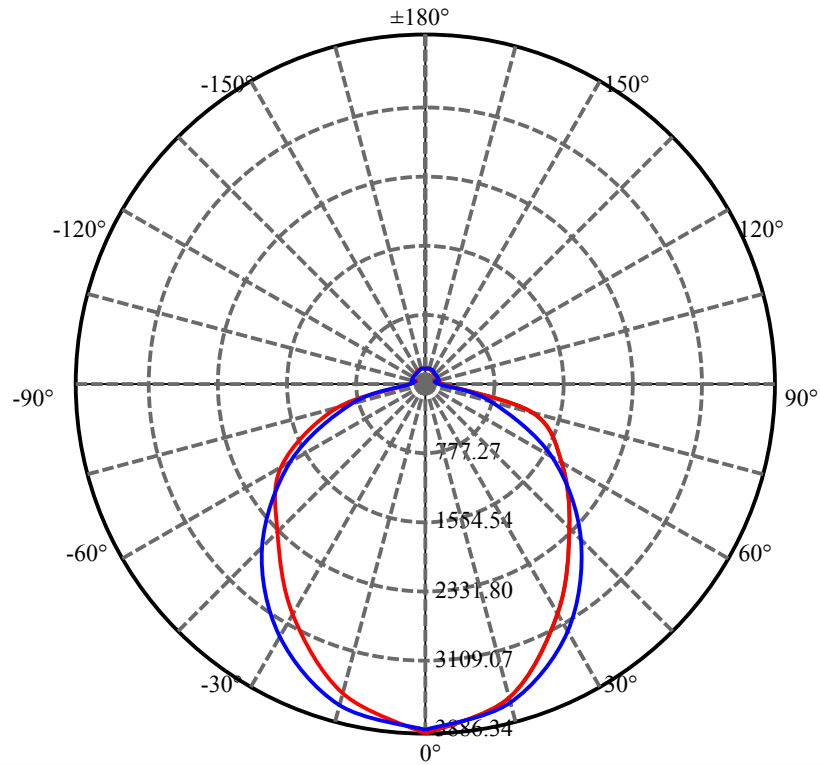
$\gamma(^{\circ})$	Average I(cd)	Zonal F(lm)	Sum F(lm)	Eff Flux(%)	Eff Sum(%)
0.0	3861.716	.000	.000	.000%	.000%
15.0	3624.029	801.328	801.328	6.579%	6.579%
30.0	3046.381	2093.484	2894.812	17.187%	23.766%
45.0	2336.158	2687.273	5582.085	22.062%	45.828%
60.0	1652.451	2595.169	8177.255	21.306%	67.133%
75.0	1000.940	2010.454	10187.710	16.505%	83.639%
90.0	180.870	960.935	11148.640	7.889%	91.528%
105.0	159.090	276.423	11425.070	2.269%	93.797%
120.0	159.090	241.083	11666.150	1.979%	95.776%
135.0	161.931	208.871	11875.020	1.715%	97.491%
150.0	165.718	163.581	12038.600	1.343%	98.834%
165.0	170.453	105.506	12144.110	.866%	99.700%
180.0	170.453	36.493	12180.600	.300%	100.000%

ZONAL LUMEN SUMMARY

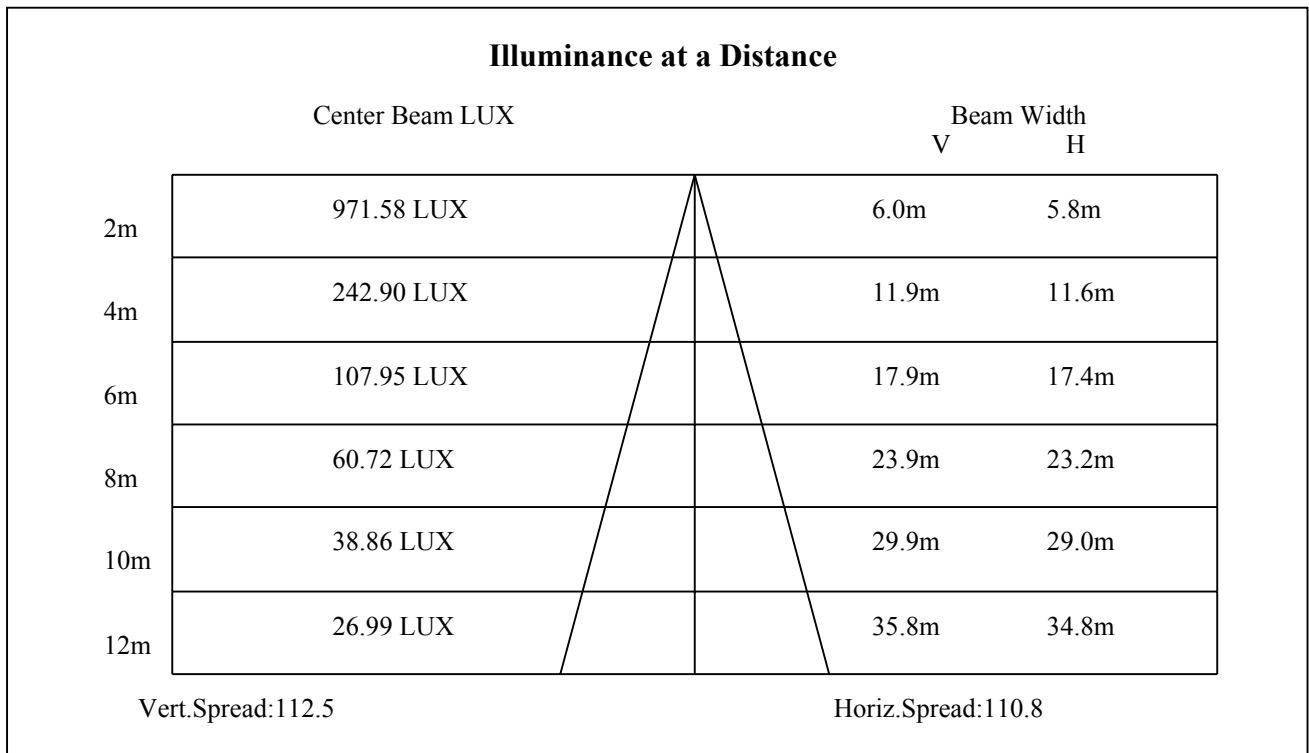
Zone	Lumens	%Fixt
0-30	2894.81	23.77%
0-40	2894.81	23.77%
0-60	8177.26	67.13%
0-90	11148.64	91.53%
90-120	517.51	4.25%
90-130	517.51	4.25%
90-150	889.96	7.31%
90-180	995.46	8.17%
0-180	12180.60	100.00%

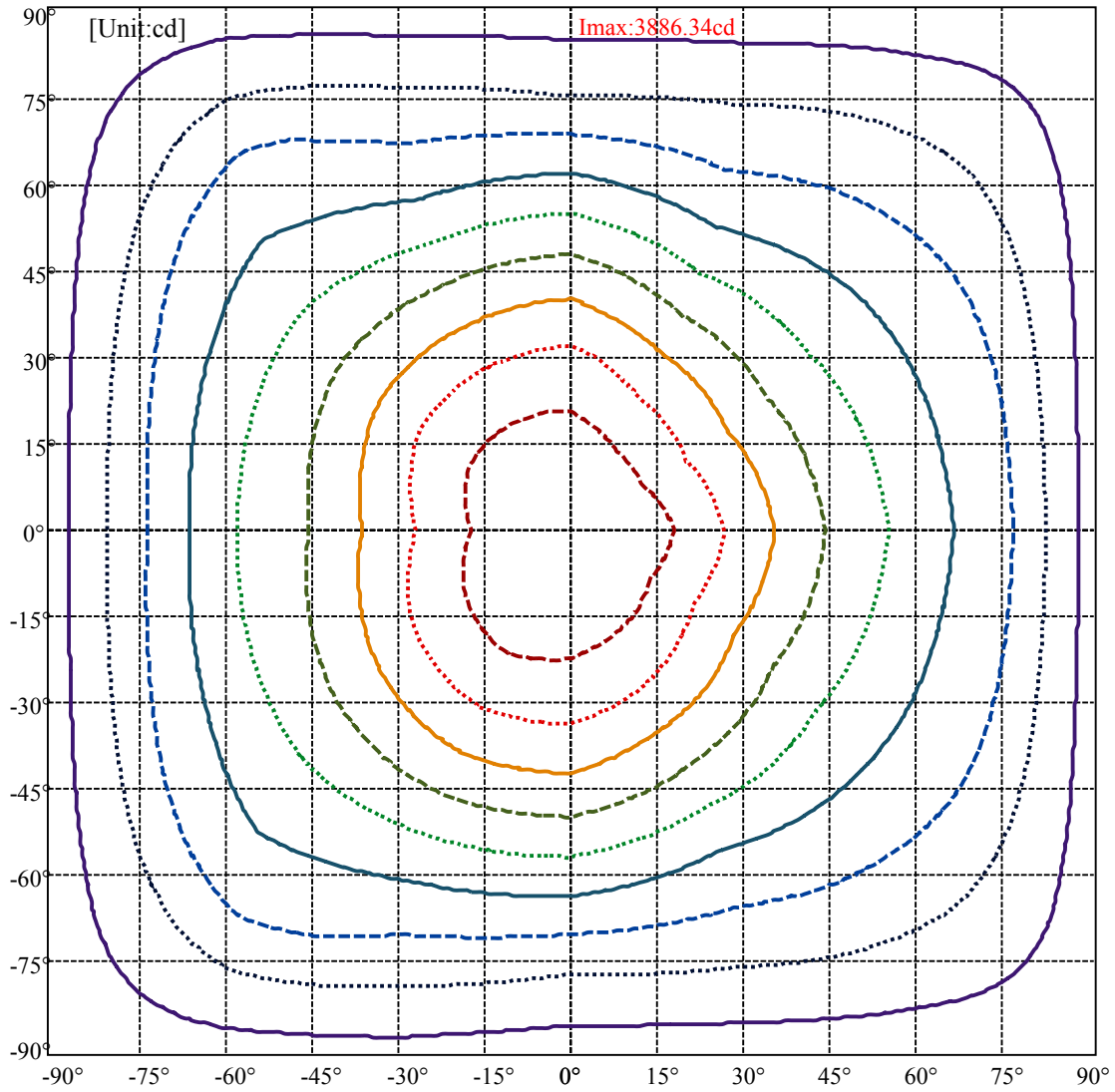
ZONAL LUMEN SUMMARY

0-10	0.00
10-20	801.33
20-30	2093.48
30-40	0.00
40-50	2687.27
50-60	2595.17
60-70	0.00
70-80	2010.45
80-90	960.93
90-100	0.00
100-110	276.42
110-120	241.08
120-130	0.00
130-140	208.87
140-150	163.58
150-160	0.00
160-170	105.51
170-180	0.00

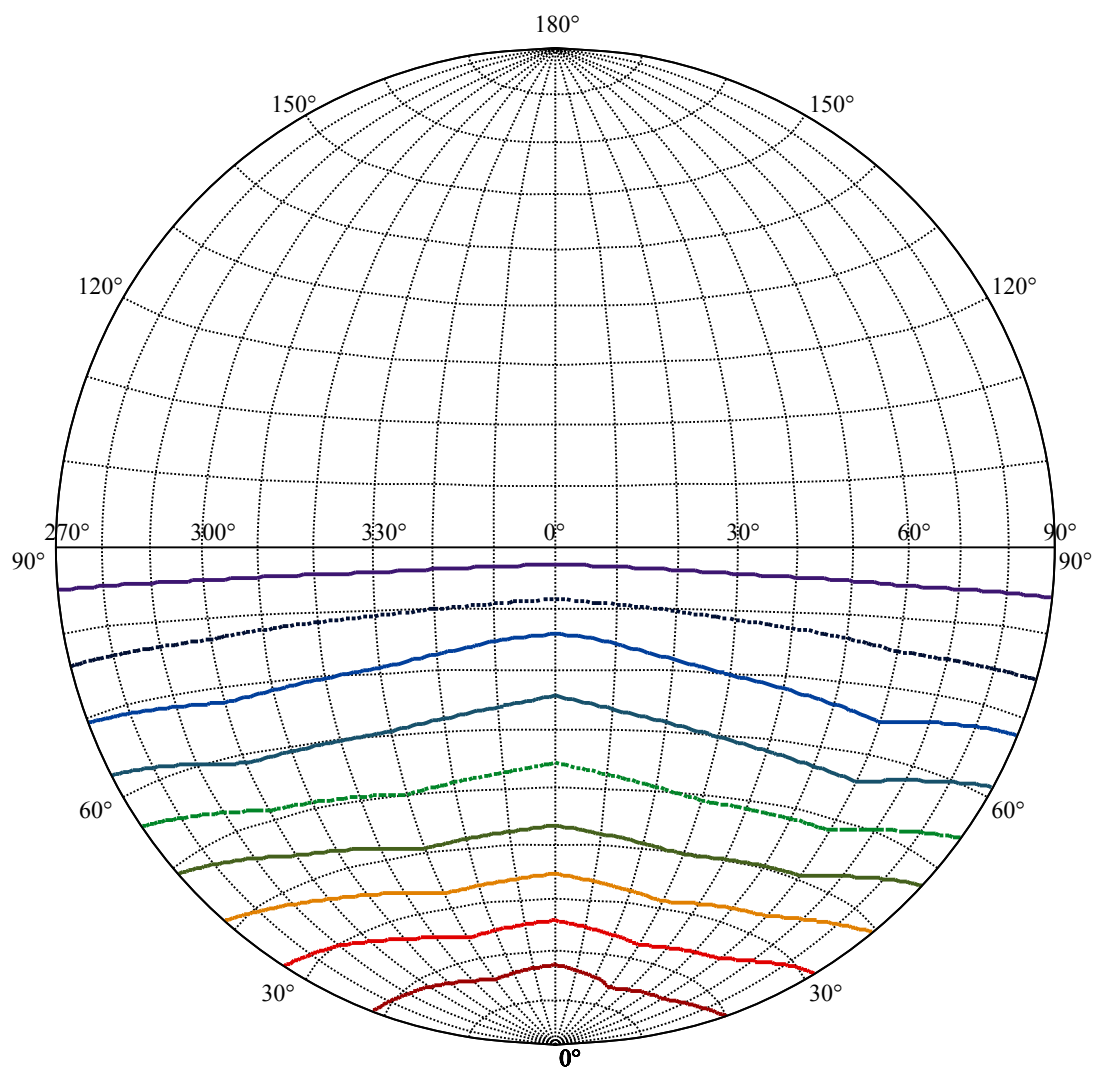


C0(Max): —
C0/C180: —
C90/C270: —





- (10%Imax) 386.74 —————
- (20%Imax) 773.48 ······
- (30%Imax) 1160.22 - - - - -
- (40%Imax) 1546.96 ————
- (50%Imax) 1933.7 ······
- (60%Imax) 2320.44 - - - - -
- (70%Imax) 2707.18 ————
- (80%Imax) 3093.92 ······
- (90%Imax) 3480.66 - - - - -

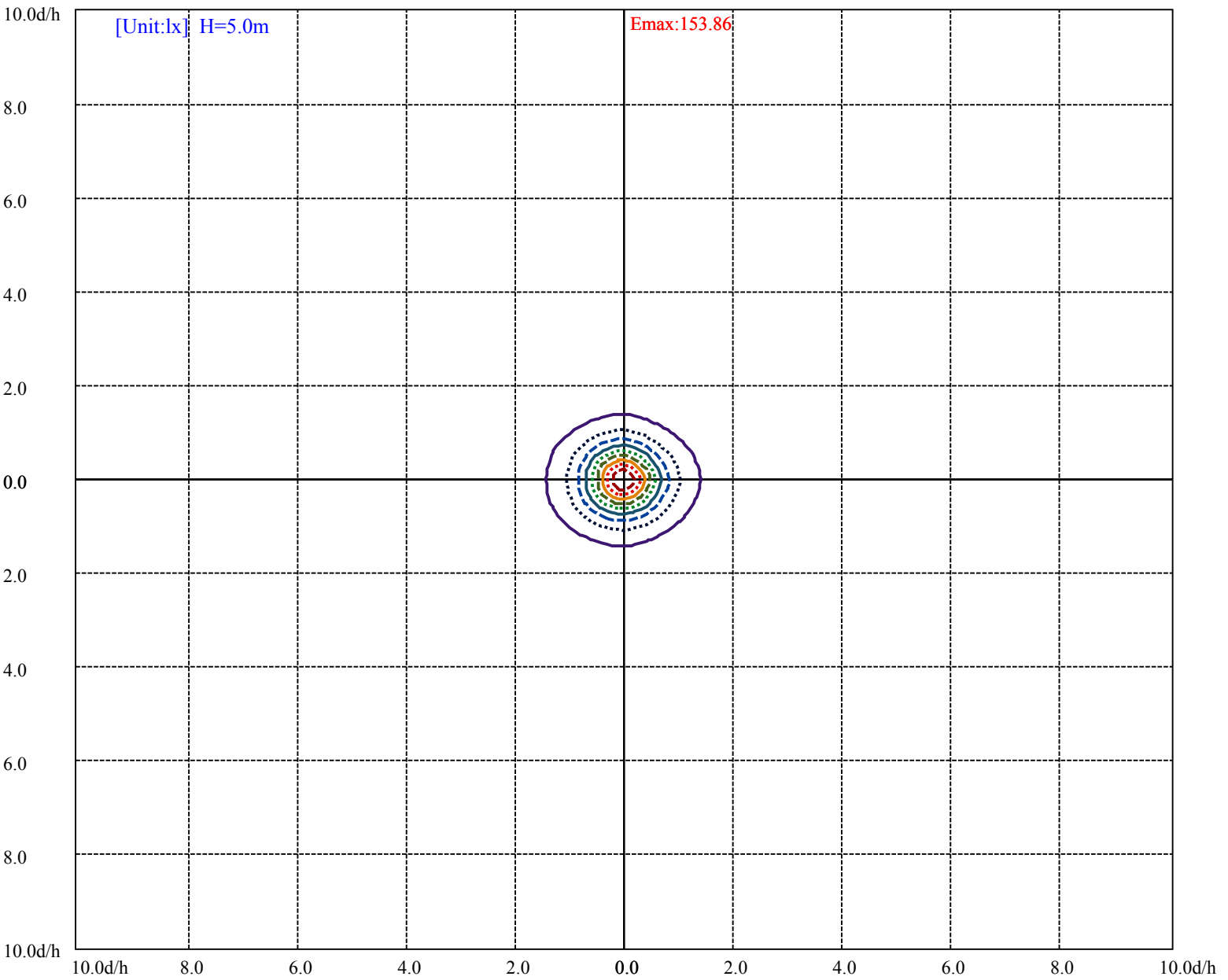


House

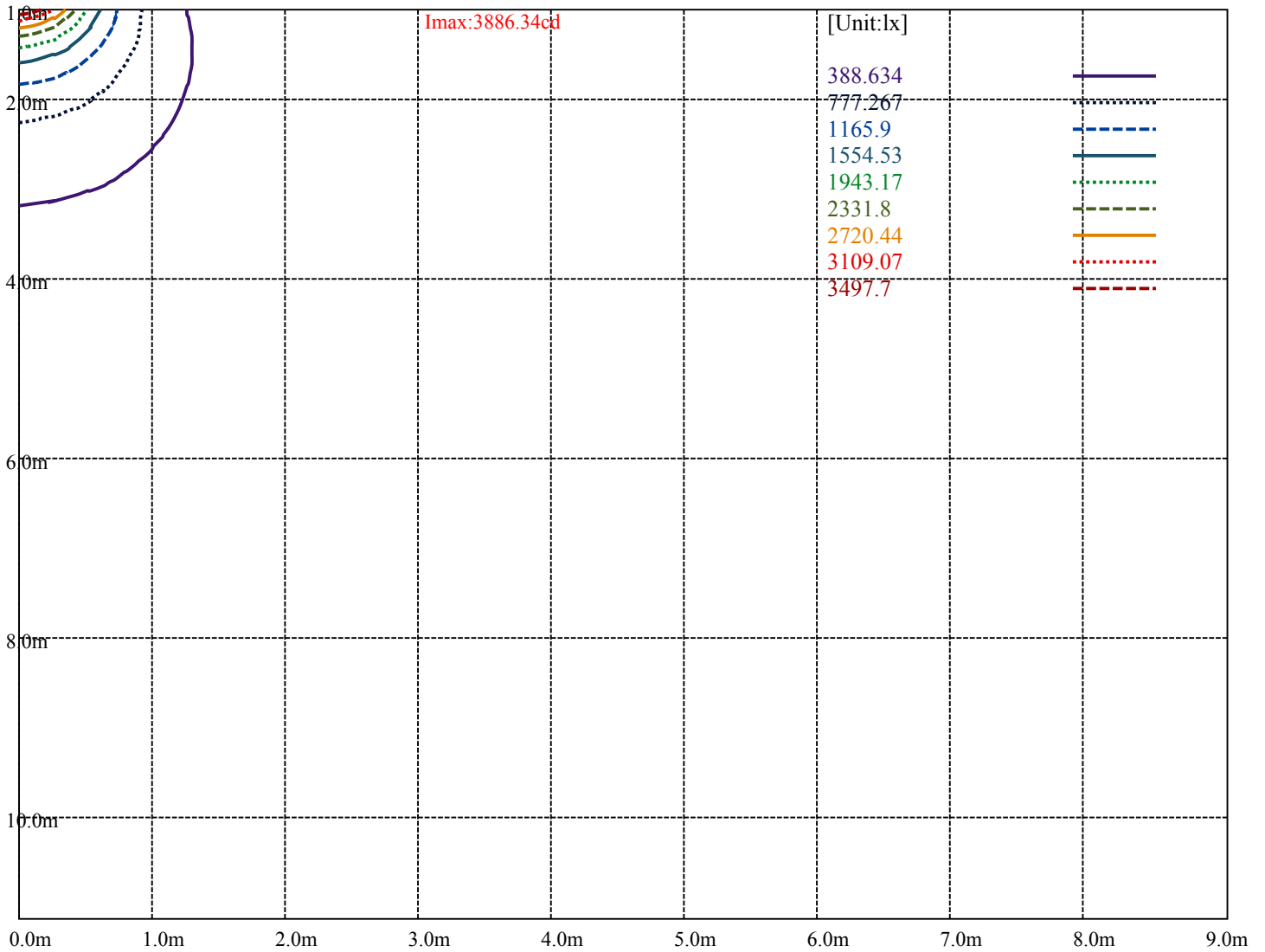
Road

I_{max}:3886.34cd

(10%I _{max}) 388.634	—
(20%I _{max}) 777.267	⋯
(30%I _{max}) 1165.9	- - -
(40%I _{max}) 1554.53	—
(50%I _{max}) 1943.17	⋯
(60%I _{max}) 2331.8	- - -
(70%I _{max}) 2720.44	—
(80%I _{max}) 3109.07	⋯
(90%I _{max}) 3497.7	- - -



- (10%Emax) 15.38624 ————
- (20%Emax) 30.77248 ······
- (30%Emax) 46.1588 - - - - -
- (40%Emax) 61.5448 ————
- (50%Emax) 76.9312 ······
- (60%Emax) 92.3176 - - - - -
- (70%Emax) 107.7036 ————
- (80%Emax) 123.09 ······
- (90%Emax) 138.476 - - - - -



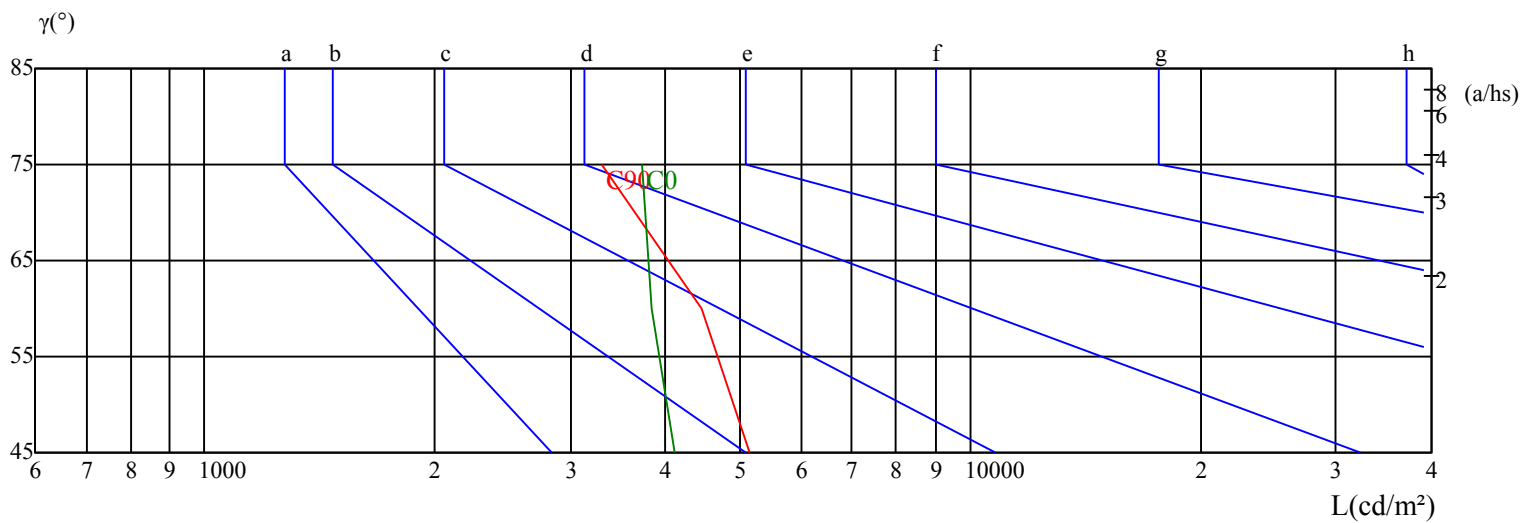
Luminance Table

γ	45	50	55	60	65	70	75	80	85
C0	4100	0	0	3839	0	0	3728	0	0
C45	0	0	0	0	0	0	0	0	0
C90	5143	0	0	4453	0	0	3293	0	0

Glare Table

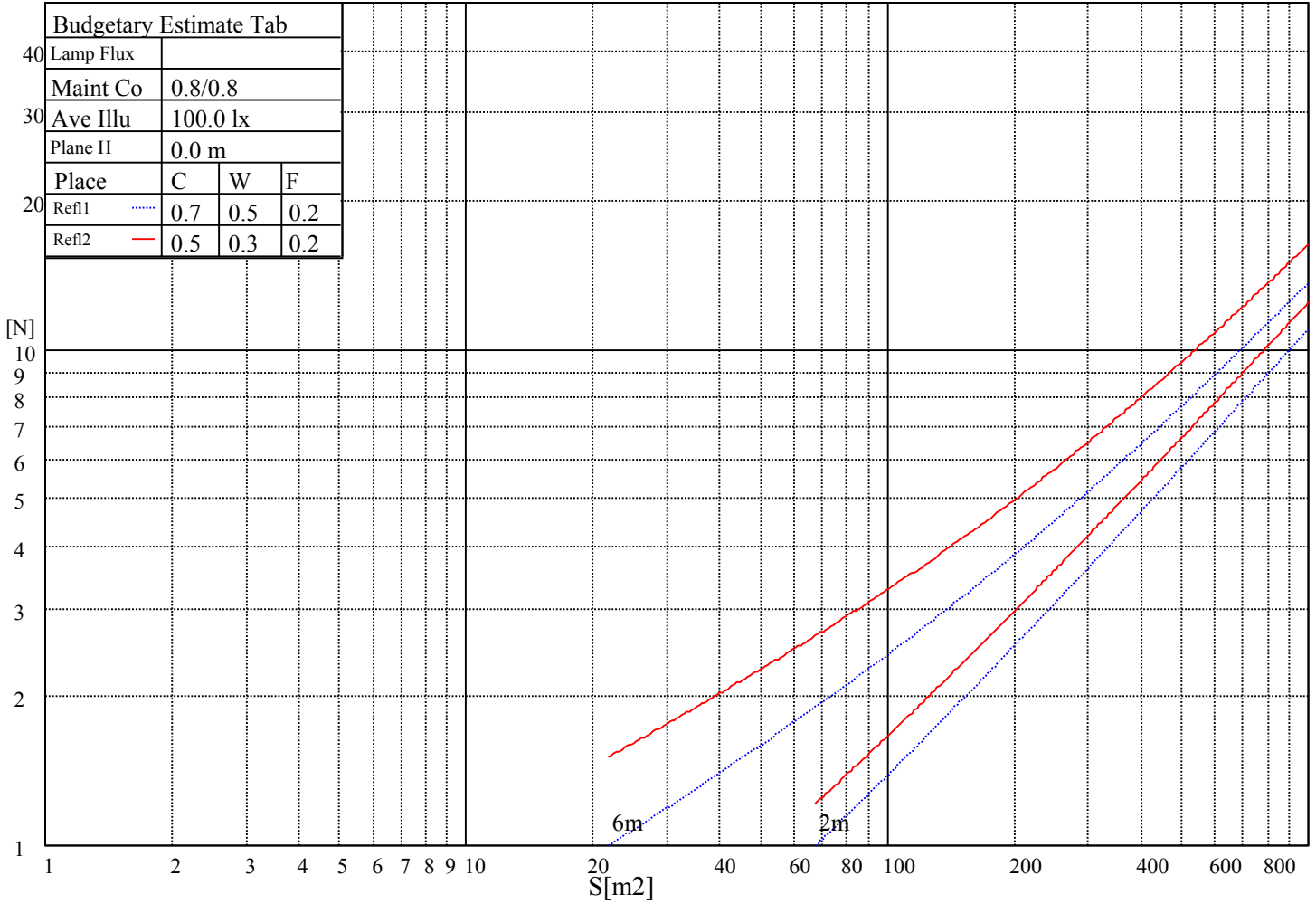
Glare	Quality	Service Values Illuminance(lx)							
1.15	A	2000	1000	500	≤ 300				
1.5	B		2000	1000	500	≤ 300			
1.85	C			2000	1000	500	≤ 300		
2.2	D				2000	1000	500	≤ 300	
2.55	E					2000	1000	500	≤ 300
		a	b	c	d	e	f	g	h

Luminance Limiting Curve

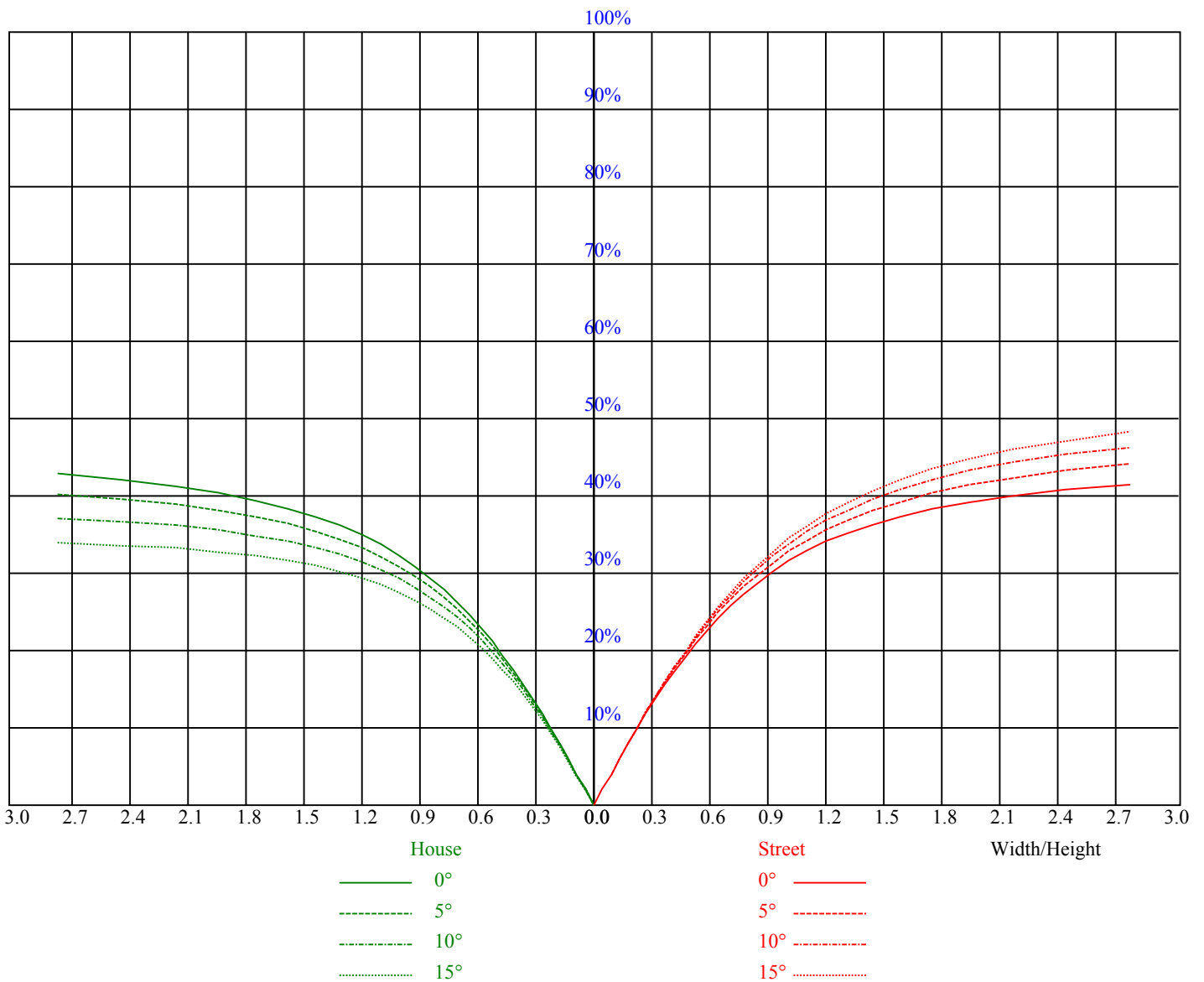


Illuminatin assessment accoding UGR											
Rf of Ceiling	70	70	50	50	30	70	70	50	50	30	
Rf of Wall	50	30	50	30	30	50	30	50	30	30	
Rf of Floor	20	20	20	20	20	20	20	20	20	20	
Room dimensions		Viewed crosswise					Viewed endwise				
X	Y										
2H	2H	7.5	9.0	7.9	9.4	9.9	7.3	8.8	7.7	9.2	9.7
	3H	9.6	11.0	10.1	11.4	11.9	9.0	10.4	9.5	10.8	11.3
	4H	10.5	11.7	11.0	12.2	12.7	9.5	10.7	10.1	11.2	11.8
	6H	11.4	12.6	11.9	13.1	13.6	10.2	11.4	10.8	11.9	12.5
	8H	11.8	13.0	12.3	13.5	14.0	10.6	11.7	11.1	12.2	12.8
	12H	11.8	12.8	12.4	13.3	13.9	10.6	11.5	11.1	12.1	12.7
4H	2H	7.8	9.0	8.4	9.5	10.1	7.7	8.9	8.2	9.3	9.9
	3H	10.1	11.1	10.7	11.6	12.2	9.5	10.5	10.1	11.0	11.7
	4H	11.4	12.4	11.9	12.9	13.5	10.5	11.4	11.0	12.0	12.6
	6H	12.5	13.4	13.0	14.0	14.6	11.3	12.3	11.9	12.8	13.4
	8H	12.7	13.3	13.3	13.9	14.6	11.5	12.1	12.1	12.8	13.5
	12H	13.0	13.7	13.6	14.3	15.0	11.8	12.5	12.4	13.1	13.8
8H	4H	11.5	12.2	12.2	12.8	13.5	10.7	11.4	11.4	12.0	12.7
	6H	12.8	13.4	13.4	14.1	14.7	11.7	12.4	12.4	13.0	13.7
	8H	13.3	14.0	13.9	14.6	15.3	12.2	12.9	12.8	13.5	14.2
	12H	13.7	14.4	14.4	15.0	15.7	12.6	13.3	13.3	13.9	14.6
12H	4H	11.6	12.3	12.2	12.9	13.6	10.8	11.5	11.5	12.1	12.8
	6H	12.9	13.5	13.5	14.2	14.9	11.9	12.6	12.5	13.2	13.9
	8H	13.4	14.1	14.1	14.7	15.4	12.4	13.1	13.0	13.7	14.4
Variation with the observer position at spacings:											
S = 1.0H	0.2/-0.9					0.2/-0.6					
S = 1.5H	0.5/-0.6					0.6/-0.5					
S = 2.0H	0.6/-0.4					0.7/-0.6					
Standard tables:	BKBF					BKBF					
Uncorrected UGR	-2.2					-2.8					
According 1000lm											

五、灯具的概算曲线



RHOCC	80			70			50			30			10			0
RHOW	50	30	10	50	30	10	50	30	10	50	30	10	50	30	10	0
RCR	COEFFICIENTS OF UTILIZATION RHOF=20 CU															
0	1.17	1.17	1.17	1.13	1.13	1.13	1.06	1.06	1.06	1.00	1.00	1.00	0.94	0.94	0.94	0.92
1	0.91	0.84	0.78	0.88	0.82	0.76	0.82	0.77	0.72	0.76	0.72	0.68	0.71	0.67	0.64	0.61
2	0.78	0.69	0.61	0.75	0.67	0.60	0.70	0.63	0.57	0.65	0.60	0.54	0.61	0.56	0.52	0.49
3	0.68	0.58	0.50	0.65	0.56	0.48	0.61	0.53	0.46	0.57	0.50	0.44	0.53	0.47	0.43	0.40
4	0.59	0.48	0.41	0.57	0.47	0.40	0.53	0.45	0.38	0.50	0.42	0.37	0.46	0.40	0.35	0.32
5	0.52	0.41	0.34	0.50	0.40	0.33	0.47	0.38	0.32	0.44	0.36	0.31	0.41	0.35	0.29	0.27
6	0.46	0.35	0.28	0.44	0.35	0.28	0.41	0.33	0.27	0.39	0.31	0.26	0.36	0.30	0.25	0.22
7	0.41	0.31	0.24	0.39	0.30	0.24	0.37	0.29	0.23	0.35	0.27	0.22	0.33	0.26	0.21	0.19
8	0.37	0.27	0.21	0.35	0.27	0.20	0.33	0.25	0.20	0.31	0.24	0.19	0.30	0.23	0.18	0.16
9	0.33	0.24	0.18	0.32	0.24	0.18	0.30	0.23	0.17	0.29	0.22	0.17	0.27	0.21	0.16	0.14
10	0.30	0.22	0.16	0.29	0.21	0.16	0.28	0.20	0.15	0.26	0.20	0.15	0.25	0.19	0.14	0.12



Intensity data(cd)

C/γ(°)	0.0	15.0	30.0	45.0	60.0	75.0	90.0	105.0	120.0
0.0	3886.34	3602.25	2931.80	2261.35	1749.99	1227.27	193.18	159.09	159.09
30.0	3852.25	3465.89	2772.71	2090.90	1545.44	965.90	159.09	159.09	159.09
60.0	3840.88	3511.34	2897.71	2102.26	1352.26	784.09	159.09	159.09	159.09
90.0	3852.25	3659.07	3170.43	2454.53	1624.99	750.00	159.09	159.09	159.09
120.0	3863.61	3693.16	3147.71	2397.71	1568.17	909.09	170.45	159.09	159.09
150.0	3874.97	3681.79	3124.98	2420.44	1795.44	1272.72	181.82	159.09	159.09
180.0	3886.34	3568.16	2954.53	2318.17	1852.26	1034.08	170.45	159.09	159.09
210.0	3852.25	3704.52	3159.07	2454.53	1829.53	1340.90	215.91	159.09	159.09
240.0	3840.88	3761.34	3272.71	2556.80	1727.26	1022.72	261.36	159.09	159.09
270.0	3852.25	3693.16	3238.62	2556.80	1715.90	829.54	170.45	159.09	159.09
300.0	3863.61	3624.98	3045.43	2284.08	1488.63	863.63	170.45	159.09	159.09
330.0	3874.97	3522.70	2840.89	2136.35	1579.54	1011.36	159.09	159.09	159.09
360.0	3886.34	3602.25	2931.80	2261.35	1749.99	1227.27	193.18	159.09	159.09

C/γ(°)	135.0	150.0	165.0	180.0
0.0	159.09	159.09	170.45	170.45
30.0	170.45	170.45	170.45	170.45
60.0	170.45	170.45	170.45	170.45
90.0	159.09	170.45	170.45	170.45
120.0	159.09	170.45	170.45	170.45
150.0	170.45	170.45	170.45	170.45
180.0	159.09	170.45	170.45	170.45
210.0	159.09	159.09	170.45	170.45
240.0	159.09	170.45	170.45	170.45
270.0	159.09	159.09	170.45	170.45
300.0	159.09	159.09	170.45	170.45
330.0	159.09	159.09	170.45	170.45
360.0	159.09	159.09	170.45	170.45