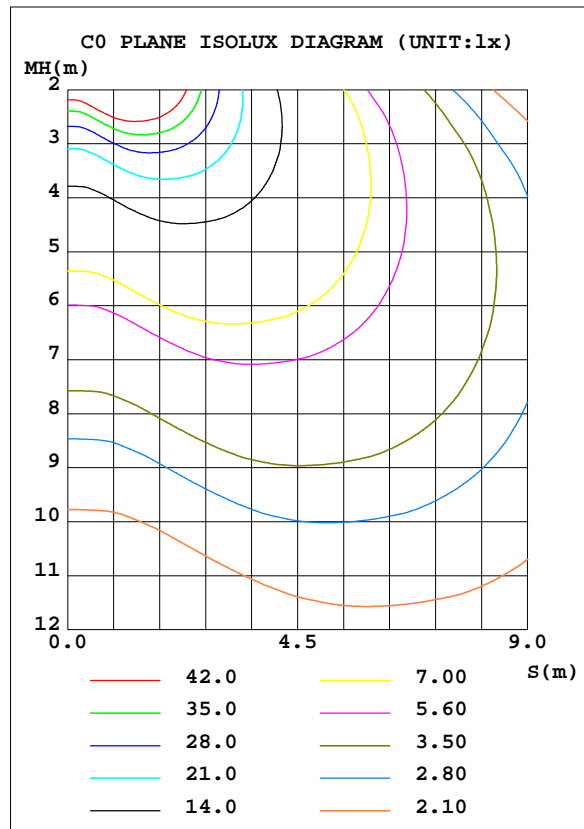
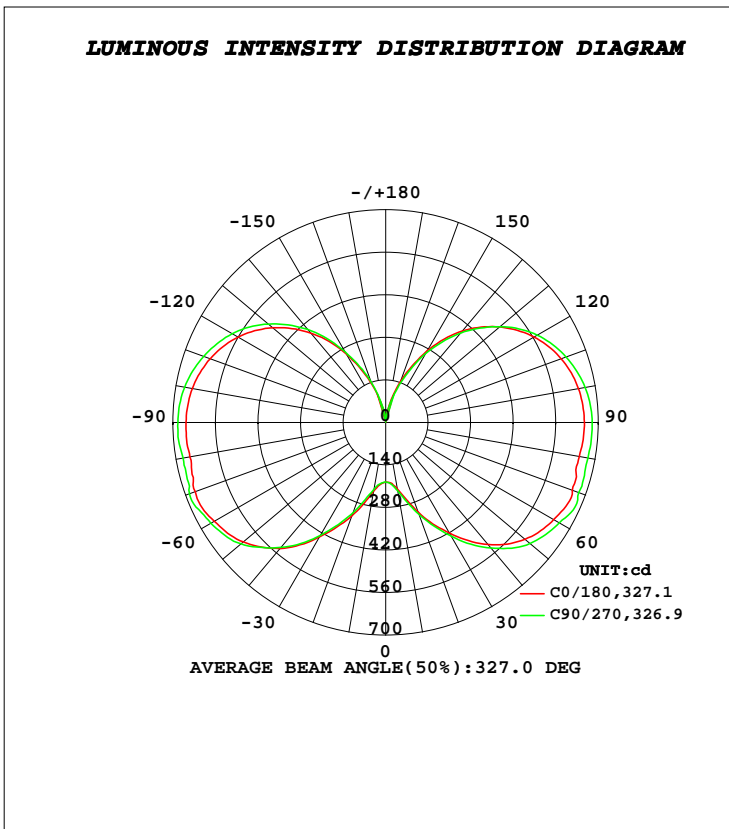


**LUMINAIRE PHOTOMETRIC TEST REPORT**

Test:U:119.78V I:0.4527A P:53.878W PF:0.9936 Freq:49.99Hz Lamp Flux:6972.22x1 lm		
NAME: LED 54WT30/360°/CL/50K/MOG/V5	TYPE:360° HIGH WATTAGE	WEIGHT:
SPEC.:	DIM.: 95*260	SERIAL No.:1
MFR.: P.Q.L., Inc.	SUR.:	Shielding Angle:

DATA OF LAMP		PHOTOMETRIC DATA Eff: 129.41 lm/W			
MODEL	91581	I <sub>max</sub> (cd)	718.0	S/MH(C0/180)	3.07
NOMINAL POWER(W)	54	LOR(%)	100.0	S/MH(C90/270)	3.10
RATED VOLTAGE(V)	120	TOTAL FLUX(lm)	6972.2	η UP, DN(C0-180)	22.9,26.9
NOMINAL FLUX(lm)	6972.22	CIE CLASS	DIFFUSE	η UP, DN(C180-360)	23.3,26.9
LAMPS INSIDE	1	η up(%)	46.2	CIBSE SHR NOM	2.00
TEST VOLTAGE(V)	120	η down(%)	53.8	CIBSE SHR MAX	2.00



**C Range: 0 - 360DEG**  
**C Interval: 22.5DEG**  
**Test Speed: HIGH**  
**Temperature:25.3DEG**  
**Operators:LIU**  
**Test Date:2017-11-02**

**γ Range: 0 - 180DEG**  
**γ Interval: 1.0DEG**  
**Test System:EVERFINE GO-2000B\_V1 SYSTEM V2.0.400**  
**Humidity:65.0%**  
**Test Distance:7.310m [K=1.0000]**  
**Remarks:**

**ZONAL FLUX DIAGRAM**

**ZONAL FLUX DIAGRAM:**

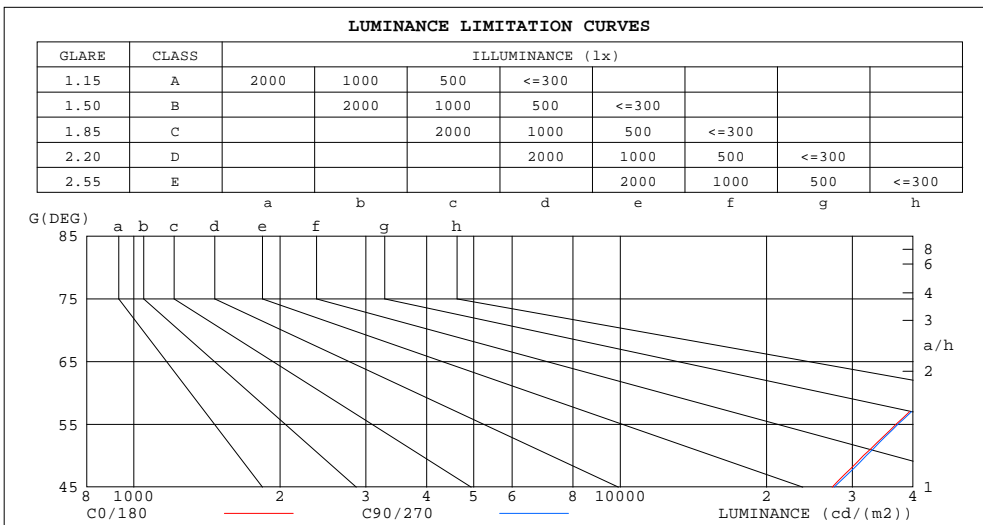
$\gamma$	C0	C45	C90	C135	C180	C225	C270	C315	$\gamma$	$\Phi$ zone	$\Phi$ total	%lum, lamp
10	222.0	223.9	228.3	237.2	230.5	226.8	222.9	212.7	0- 10	20.06	20.06	0.29,0.29
20	314.1	315.2	322.5	336.5	327.4	321.4	316.2	298.9	10- 20	77.55	97.61	1.4,1.4
30	420.2	420.1	432.4	449.7	434.6	439.8	427.9	405.3	20- 30	173.8	271.4	3.89,3.89
40	524.4	530.9	539.5	550.3	541.5	547.9	536.7	521.8	30- 40	305.2	576.6	8.27,8.27
50	597.8	611.7	620.4	628.9	611.9	629.2	622.2	609.0	40- 50	448.4	1025	14.7,14.7
60	639.3	669.9	660.8	680.7	650.8	687.1	663.8	670.1	50- 60	576.9	1602	23,23
70	653.4	700.6	675.8	694.5	667.5	714.4	687.3	709.3	60- 70	677.0	2279	32.7,32.7
80	647.0	697.0	675.9	693.8	654.4	705.2	676.8	701.1	70- 80	723.0	3002	43.1,43.1
90	653.8	703.2	679.2	697.1	657.1	710.9	684.2	707.4	80- 90	748.3	3750	53.8,53.8
100	644.1	692.4	666.5	680.9	646.1	698.5	672.3	700.1	90-100	745.7	4496	64.5,64.5
110	614.9	656.6	631.8	639.7	614.6	658.9	637.3	666.8	100-110	699.0	5195	74.5,74.5
120	563.6	595.5	575.9	574.0	562.0	596.2	584.0	609.4	110-120	609.8	5805	83.3,83.3
130	489.6	509.7	490.3	480.2	484.8	510.4	504.3	529.2	120-130	488.5	6293	90.3,90.3
140	393.5	398.0	384.7	363.7	384.6	398.8	400.0	421.5	130-140	348.3	6641	95.3,95.3
150	271.1	266.0	260.2	232.3	260.8	269.2	268.7	290.9	140-150	209.4	6851	98.3,98.3
160	144.1	138.0	131.5	111.9	133.3	139.3	142.8	156.1	150-160	93.82	6945	99.6,99.6
170	43.07	39.91	36.77	27.29	36.74	39.24	42.39	50.73	160-170	25.40	6970	100,100
180	8.140	8.089	8.103	8.093	8.195	8.152	8.148	8.139	170-180	2.237	6972	100,100
DEG	LUMINOUS INTENSITY:cd									UNIT:lm		

**C Range: 0 - 360DEG**  
**C Interval: 22.5DEG**  
**Test Speed: HIGH**  
**Temperature:25.3DEG**  
**Operators:LIU**  
**Test Date:2017-11-02**

**$\gamma$  Range: 0 - 180DEG**  
 **$\gamma$  Interval: 1.0DEG**  
**Test System:EVERFINE GO-2000B\_V1 SYSTEM V2.0.400**  
**Humidity:65.0%**  
**Test Distance:7.310m [K=1.0000]**  
**Remarks:**

**LUMINANCE LIMITATION CURVES**

Test:U:119.78V I:0.4527A P:53.878W PF:0.9936 Freq:49.99Hz Lamp Flux:6972.22x1 lm		
NAME: LED 54WT30/360°/CL/50K/MOG/V5	TYPE:360° HIGH WATTAGE	WEIGHT:
SPEC.:	DIM.: 95*260	SERIAL No.:1
MFR.: P.Q.L., Inc.	SUR.:	Shielding Angle:



LUMINANCE cd/(m2)		
G(DEG)	C0/180	C90/270
85	254939	259243
80	126881	129468
75	85335	86970
70	65050	65723
65	52730	53566
60	43539	43956
55	36929	37269
50	31669	32101
45	27278	27528

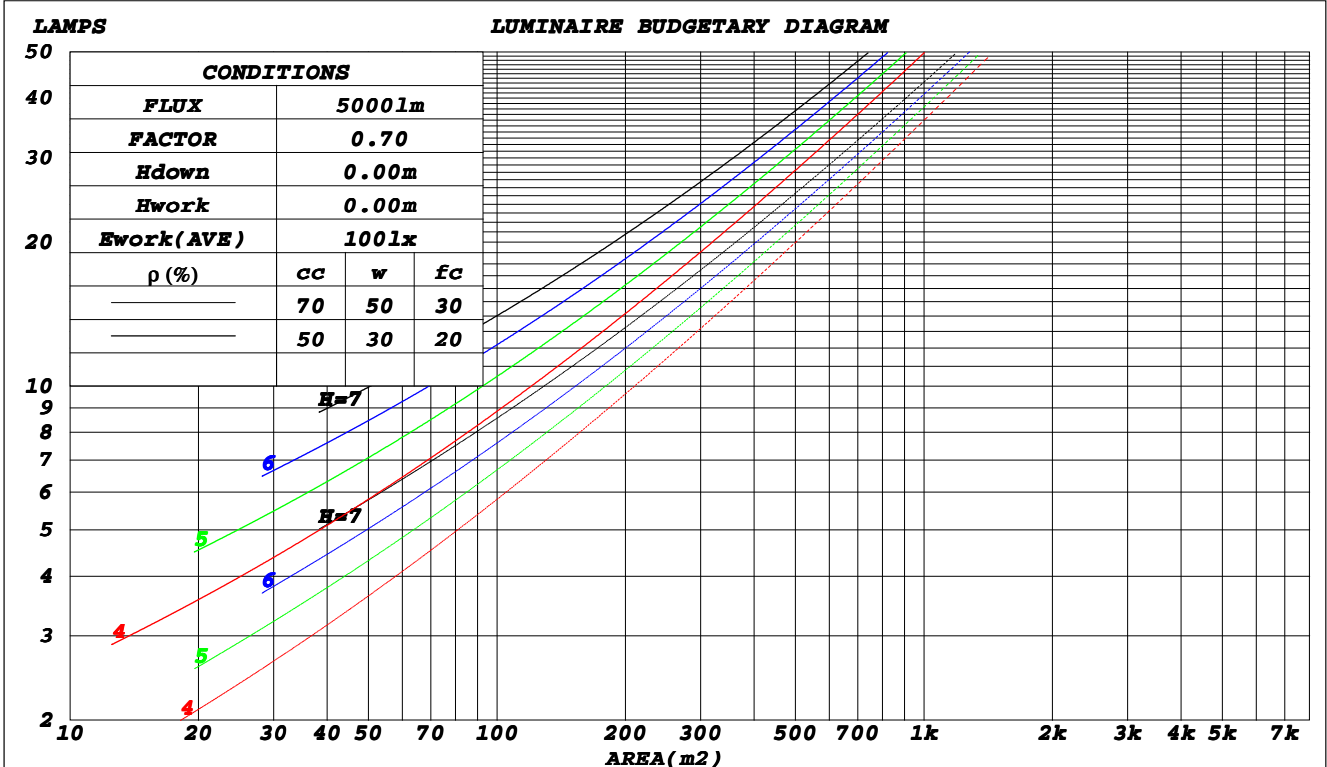
**C Range: 0 - 360DEG**  
**C Interval: 22.5DEG**  
**Test Speed: HIGH**  
**Temperature: 25.3DEG**  
**Operators: LIU**  
**Test Date: 2017-11-02**

**γ Range: 0 - 180DEG**  
**γ Interval: 1.0DEG**  
**Test System: EVERFINE GO-2000B\_V1 SYSTEM V2.0.400**  
**Humidity: 65.0%**  
**Test Distance: 7.310m [K=1.0000]**  
**Remarks:**

CU AND LUMINAIRE BUDGETARY ESTIMATE DIAGRAM

Test:U:119.78V I:0.4527A P:53.878W PF:0.9936 Freq:49.99Hz Lamp Flux:6972.22x1 lm		
NAME: LED 54WT30/360°/CL/50K/MOG/V5	TYPE:360° HIGH WATTAGE	WEIGHT:
SPEC.:	DIM.: 95*260	SERIAL No.:1
MFR.: P.Q.L., Inc.	SUR.:	Shielding Angle:

ρcc	80%			70%			50%			30%			10%			0
ρw	50%	30%	10%	50%	30%	10%	50%	30%	10%	50%	30%	10%	50%	30%	10%	0
ρfc	20%			20%			20%			20%			20%			0
<b>RCR</b>	<b>RCR:Room Cavity Ratio</b>						<b>Coefficients of Utilization(CU)</b>									
0.0	1.08	1.08	1.08	1.00	1.00	1.00	.85	.85	.85	.72	.72	.72	.60	.60	.60	.54
1.0	.86	.80	.75	.80	.74	.69	.67	.63	.59	.55	.52	.49	.44	.42	.39	.34
2.0	.72	.64	.57	.66	.59	.53	.55	.49	.44	.45	.40	.37	.36	.32	.29	.24
3.0	.62	.52	.45	.57	.48	.41	.47	.40	.35	.38	.33	.28	.30	.26	.22	.18
4.0	.54	.44	.36	.49	.40	.34	.41	.34	.28	.33	.27	.23	.26	.21	.18	.14
5.0	.47	.37	.30	.43	.34	.28	.36	.29	.23	.29	.23	.19	.22	.18	.14	.11
6.0	.42	.32	.25	.38	.30	.23	.32	.25	.19	.26	.20	.16	.20	.15	.12	.09
7.0	.37	.28	.22	.34	.26	.20	.28	.22	.17	.23	.17	.13	.18	.13	.10	.07
8.0	.33	.25	.19	.31	.23	.17	.26	.19	.14	.21	.15	.11	.16	.12	.09	.06
9.0	.30	.22	.16	.28	.20	.15	.23	.17	.12	.19	.14	.10	.15	.11	.08	.05
10.0	.28	.20	.14	.25	.18	.13	.21	.15	.11	.17	.12	.09	.14	.10	.07	.05



C Range: 0 - 360DEG  
 C Interval: 22.5DEG  
 Test Speed: HIGH  
 Temperature: 25.3DEG  
 Operators: LIU  
 Test Date: 2017-11-02

γ Range: 0 - 180DEG  
 γ Interval: 1.0DEG  
 Test System: EVERFINE GO-2000B\_V1 SYSTEM V2.0.400  
 Humidity: 65.0%  
 Test Distance: 7.310m [K=1.0000]  
 Remarks:

**WEC AND CCEC**

Test:U:119.78V I:0.4527A P:53.878W PF:0.9936 Freq:49.99Hz Lamp Flux:6972.22x1 lm		
NAME: LED 54WT30/360°/CL/50K/MOG/V5	TYPE:360° HIGH WATTAGE	WEIGHT:
SPEC.:	DIM.: 95*260	SERIAL No.:1
MFR.: P.Q.L., Inc.	SUR.:	Shielding Angle:

$\rho_{cc}$	80%			70%			50%			30%			10%			0
$\rho_w$	50%	30%	10%	50%	30%	10%	50%	30%	10%	50%	30%	10%	50%	30%	10%	0
$\rho_{fc}$	20%			20%			20%			20%			20%			0
<b>RCR</b>	<b>RCR:Room Cavity Ratio</b>						<b>Wall Exitance Coefficients(WEC)</b>									
0.0																
1.0	.432	.246	.078	.411	.234	.074	.371	.213	.068	.334	.193	.062	.300	.174	.056	
2.0	.358	.196	.060	.338	.186	.057	.302	.168	.052	.268	.150	.047	.237	.134	.042	
3.0	.311	.165	.050	.293	.157	.047	.259	.141	.043	.228	.125	.038	.200	.111	.034	
4.0	.275	.143	.042	.259	.136	.040	.229	.121	.036	.200	.107	.032	.174	.094	.029	
5.0	.248	.126	.037	.233	.120	.035	.205	.107	.031	.178	.094	.028	.154	.082	.025	
6.0	.225	.113	.032	.211	.107	.031	.185	.095	.028	.161	.084	.025	.138	.073	.022	
7.0	.206	.102	.029	.194	.097	.028	.170	.086	.025	.147	.075	.022	.126	.065	.019	
8.0	.190	.093	.026	.179	.088	.025	.156	.078	.022	.135	.069	.020	.116	.059	.017	
9.0	.177	.085	.024	.166	.081	.023	.145	.072	.020	.126	.063	.018	.107	.054	.016	
10.0	.165	.079	.022	.155	.075	.021	.135	.066	.019	.117	.058	.017	.100	.050	.014	

$\rho_{cc}$	80%			70%			50%			30%			10%			0
$\rho_w$	50%	30%	10%	50%	30%	10%	50%	30%	10%	50%	30%	10%	50%	30%	10%	0
$\rho_{fc}$	20%			20%			20%			20%			20%			0
<b>RCR</b>	<b>RCR:Room Cavity Ratio</b>						<b>Ceiling Cavity Exitance Coefficients(CCEC)</b>									
0.0	.543	.543	.543	.464	.464	.464	.316	.316	.316	.182	.182	.182	.058	.058	.058	
1.0	.544	.510	.480	.465	.438	.413	.318	.301	.286	.183	.174	.166	.059	.056	.054	
2.0	.538	.489	.447	.461	.421	.387	.316	.291	.270	.182	.169	.158	.058	.055	.052	
3.0	.532	.474	.428	.456	.409	.371	.313	.284	.260	.181	.166	.153	.058	.054	.050	
4.0	.524	.462	.415	.450	.400	.361	.309	.278	.254	.179	.163	.150	.058	.053	.049	
5.0	.517	.453	.407	.444	.392	.354	.306	.274	.250	.177	.161	.148	.057	.053	.049	
6.0	.509	.446	.401	.438	.386	.349	.302	.270	.247	.175	.159	.147	.057	.052	.048	
7.0	.502	.440	.396	.432	.381	.345	.299	.267	.245	.173	.158	.146	.056	.052	.048	
8.0	.496	.435	.393	.427	.377	.343	.295	.265	.243	.172	.156	.145	.056	.051	.048	
9.0	.490	.430	.390	.422	.373	.341	.292	.263	.242	.170	.155	.144	.055	.051	.048	
10.0	.484	.426	.388	.417	.370	.339	.289	.261	.241	.169	.154	.144	.055	.051	.048	

C Range: 0 - 360DEG  
 C Interval: 22.5DEG  
 Test Speed: HIGH  
 Temperature:25.3DEG  
 Operators:LIU  
 Test Date:2017-11-02

$\gamma$  Range: 0 - 180DEG  
 $\gamma$  Interval: 1.0DEG  
 Test System:EVERFINE GO-2000B\_V1 SYSTEM V2.0.400  
 Humidity:65.0%  
 Test Distance:7.310m [K=1.0000]  
 Remarks:

**UGR(Unified Glare Rating) Table**

Test:U:119.78V I:0.4527A P:53.878W PF:0.9936 Freq:49.99Hz Lamp Flux:6972.22x1 lm										
NAME: LED 54WT30/360°/CL/50K/MOG/V5					TYPE:360° HIGH WATTAGE			WEIGHT:		
SPEC.:					DIM.: 95*260			SERIAL No.:1		
MFR.: P.Q.L., Inc.					SUR.:			Shielding Angle:		
<b>ceiling/cavity</b>	<b>0.7</b>	<b>0.7</b>	<b>0.5</b>	<b>0.5</b>	<b>0.3</b>	<b>0.7</b>	<b>0.7</b>	<b>0.5</b>	<b>0.5</b>	<b>0.3</b>
<b>walls</b>	<b>0.5</b>	<b>0.3</b>	<b>0.5</b>	<b>0.3</b>	<b>0.3</b>	<b>0.5</b>	<b>0.3</b>	<b>0.5</b>	<b>0.3</b>	<b>0.3</b>
<b>working plane</b>	<b>0.2</b>	<b>0.2</b>	<b>0.2</b>	<b>0.2</b>	<b>0.2</b>	<b>0.2</b>	<b>0.2</b>	<b>0.2</b>	<b>0.2</b>	<b>0.2</b>
<b>Room dimensions</b>	<b>Viewed crosswise</b>					<b>Viewed endwise</b>				
<b>x = 2H y = 2H</b>	<b>16.2</b>	<b>17.3</b>	<b>17.0</b>	<b>18.2</b>	<b>19.3</b>	<b>16.0</b>	<b>17.2</b>	<b>16.9</b>	<b>18.1</b>	<b>19.2</b>
<b>3H</b>	<b>19.5</b>	<b>20.6</b>	<b>20.4</b>	<b>21.5</b>	<b>22.6</b>	<b>19.4</b>	<b>20.5</b>	<b>20.3</b>	<b>21.3</b>	<b>22.5</b>
<b>4H</b>	<b>21.3</b>	<b>22.3</b>	<b>22.2</b>	<b>23.2</b>	<b>24.4</b>	<b>21.2</b>	<b>22.2</b>	<b>22.1</b>	<b>23.1</b>	<b>24.3</b>
<b>6H</b>	<b>23.3</b>	<b>24.2</b>	<b>24.2</b>	<b>25.2</b>	<b>26.3</b>	<b>23.3</b>	<b>24.2</b>	<b>24.1</b>	<b>25.1</b>	<b>26.3</b>
<b>8H</b>	<b>24.4</b>	<b>25.3</b>	<b>25.3</b>	<b>26.2</b>	<b>27.4</b>	<b>24.4</b>	<b>25.3</b>	<b>25.3</b>	<b>26.2</b>	<b>27.4</b>
<b>12H</b>	<b>25.7</b>	<b>26.6</b>	<b>26.6</b>	<b>27.5</b>	<b>28.7</b>	<b>25.7</b>	<b>26.6</b>	<b>26.6</b>	<b>27.5</b>	<b>28.7</b>
<b>4H 2H</b>	<b>17.2</b>	<b>18.2</b>	<b>18.1</b>	<b>19.1</b>	<b>20.3</b>	<b>17.2</b>	<b>18.2</b>	<b>18.0</b>	<b>19.1</b>	<b>20.2</b>
<b>3H</b>	<b>20.7</b>	<b>21.6</b>	<b>21.6</b>	<b>22.5</b>	<b>23.7</b>	<b>20.6</b>	<b>21.5</b>	<b>21.5</b>	<b>22.4</b>	<b>23.6</b>
<b>4H</b>	<b>22.7</b>	<b>23.5</b>	<b>23.6</b>	<b>24.4</b>	<b>25.6</b>	<b>22.5</b>	<b>23.3</b>	<b>23.4</b>	<b>24.3</b>	<b>25.5</b>
<b>6H</b>	<b>24.8</b>	<b>25.5</b>	<b>25.7</b>	<b>26.5</b>	<b>27.7</b>	<b>24.7</b>	<b>25.4</b>	<b>25.6</b>	<b>26.4</b>	<b>27.6</b>
<b>8H</b>	<b>26.0</b>	<b>26.7</b>	<b>26.9</b>	<b>27.6</b>	<b>28.9</b>	<b>25.9</b>	<b>26.6</b>	<b>26.8</b>	<b>27.5</b>	<b>28.8</b>
<b>12H</b>	<b>27.4</b>	<b>28.0</b>	<b>28.3</b>	<b>29.0</b>	<b>30.2</b>	<b>27.3</b>	<b>27.9</b>	<b>28.3</b>	<b>28.9</b>	<b>30.2</b>
<b>8H 4H</b>	<b>23.4</b>	<b>24.1</b>	<b>24.3</b>	<b>25.0</b>	<b>26.3</b>	<b>23.3</b>	<b>24.0</b>	<b>24.2</b>	<b>24.9</b>	<b>26.2</b>
<b>6H</b>	<b>25.8</b>	<b>26.4</b>	<b>26.8</b>	<b>27.4</b>	<b>28.7</b>	<b>25.7</b>	<b>26.3</b>	<b>26.7</b>	<b>27.3</b>	<b>28.5</b>
<b>8H</b>	<b>27.2</b>	<b>27.8</b>	<b>28.2</b>	<b>28.7</b>	<b>30.0</b>	<b>27.1</b>	<b>27.6</b>	<b>28.1</b>	<b>28.6</b>	<b>29.9</b>
<b>12H</b>	<b>28.8</b>	<b>29.3</b>	<b>29.8</b>	<b>30.3</b>	<b>31.6</b>	<b>28.7</b>	<b>29.2</b>	<b>29.7</b>	<b>30.2</b>	<b>31.5</b>
<b>12H 4H</b>	<b>23.6</b>	<b>24.2</b>	<b>24.5</b>	<b>25.2</b>	<b>26.4</b>	<b>23.5</b>	<b>24.1</b>	<b>24.5</b>	<b>25.1</b>	<b>26.4</b>
<b>6H</b>	<b>26.2</b>	<b>26.7</b>	<b>27.1</b>	<b>27.7</b>	<b>29.0</b>	<b>26.0</b>	<b>26.6</b>	<b>27.0</b>	<b>27.6</b>	<b>28.8</b>
<b>8H</b>	<b>27.7</b>	<b>28.1</b>	<b>28.7</b>	<b>29.1</b>	<b>30.4</b>	<b>27.5</b>	<b>28.0</b>	<b>28.5</b>	<b>29.0</b>	<b>30.3</b>
<b>Variations with the observer position at spacings:</b>										
<b>S = 1.0H</b>	<b>+ 0.1 / - 0.1</b>					<b>+ 0.1 / - 0.1</b>				
<b>1.5H</b>	<b>+ 0.2 / - 0.3</b>					<b>+ 0.2 / - 0.3</b>				
<b>2.0H</b>	<b>+ 0.3 / - 0.4</b>					<b>+ 0.3 / - 0.4</b>				

CIE Pub.117, 6972 lm Total Lamp Luminous Flux Correct ( $8\log(F/F_0) = 6.7$ )

**C Range: 0 - 360DEG**  
**C Interval: 22.5DEG**  
**Test Speed: HIGH**  
**Temperature:25.3DEG**  
**Operators:LIU**  
**Test Date:2017-11-02**

**γ Range: 0 - 180DEG**  
**γ Interval: 1.0DEG**  
**Test System:EVERFINE GO-2000B\_V1 SYSTEM V2.0.400**  
**Humidity:65.0%**  
**Test Distance:7.310m [K=1.0000]**  
**Remarks:**

**UTILIZATION FACTORS TABLE**

Test:U:119.78V I:0.4527A P:53.878W PF:0.9936 Freq:49.99Hz Lamp Flux:6972.22x1 Lm		
NAME: LED 54WT30/360°/CL/50K/MOG/V5	TYPE:360° HIGH WATTAGE	WEIGHT:
SPEC.:	DIM.: 95*260	SERIAL No.:1
MFR.: P.Q.L., Inc.	SUR.:	Shielding Angle:

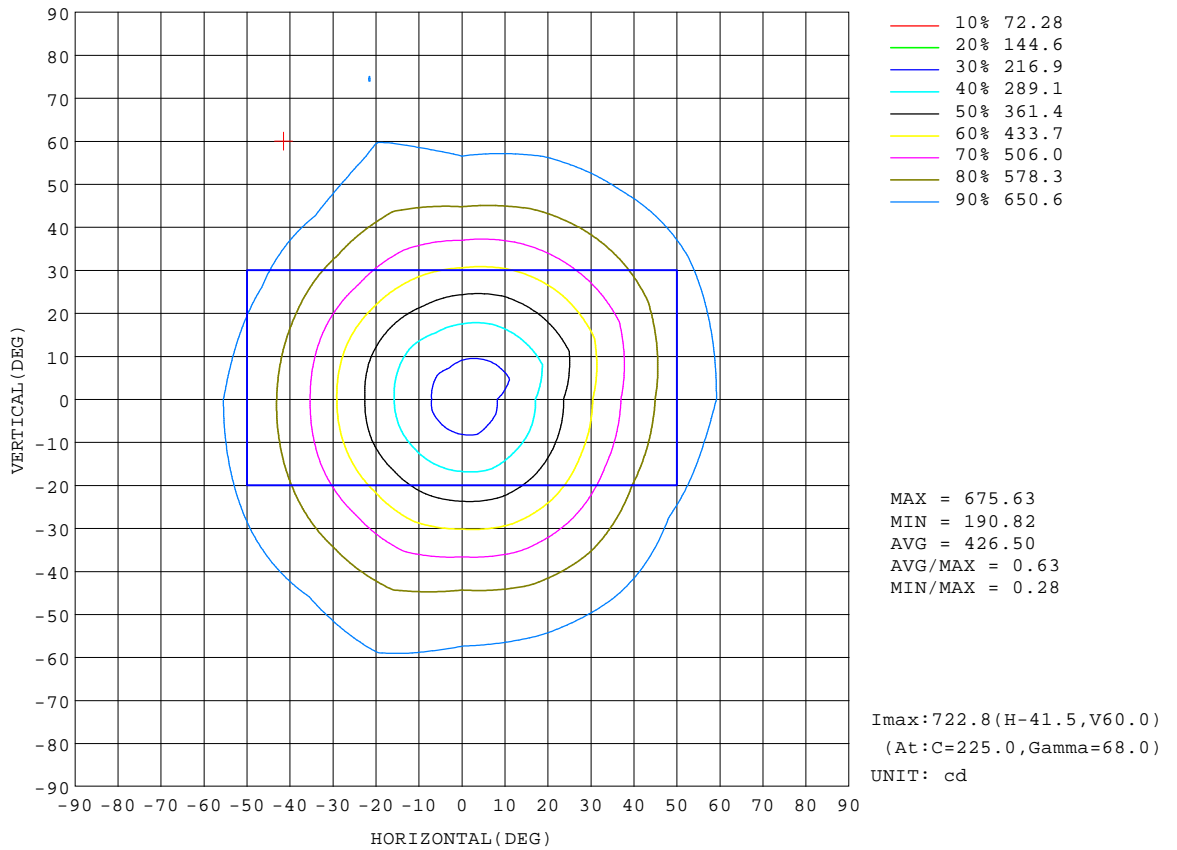
REFLECTANCE										
Ceiling	0.8	0.8	0.8	0.7	0.7	0.7	0.5	0.5	0.5	0
Walls	0.7	0.5	0.3	0.7	0.5	0.3	0.7	0.5	0.3	0
Working plane	0.2	0.2	0.2	0.2	0.2	0.2	0.2	0.2	0.2	0
<b>ROOM INDEX</b>	<b>UTILIZATION FACTORS(PERCENT) <math>k(RI) \times RCR = 5</math></b>									
<b>k = 0.60</b>	35	22	14	33	21	14	30	19	13	6
<b>0.80</b>	43	29	20	41	28	20	36	25	18	9
<b>1.00</b>	51	36	27	48	34	25	42	33	23	12
<b>1.25</b>	58	43	33	54	40	31	47	36	28	15
<b>1.50</b>	63	49	38	59	46	36	51	40	32	18
<b>2.00</b>	71	57	47	66	54	45	57	47	39	22
<b>2.50</b>	76	64	54	71	59	51	60	52	44	25
<b>3.00</b>	80	69	60	74	64	56	63	55	49	28
<b>4.00</b>	86	76	68	79	71	63	68	61	55	32
<b>5.00</b>	89	81	73	83	75	68	70	64	59	35
<b>ROOM INDEX</b>	<b>UF(total)</b>									<b>Direct</b>
<b>According to DIN EN 13032-2 2004</b>			<b>Suspended</b>					<b>SHRNOM = 1.25</b>		

**C Range: 0 - 360DEG**  
**C Interval: 22.5DEG**  
**Test Speed: HIGH**  
**Temperature:25.3DEG**  
**Operators:LIU**  
**Test Date:2017-11-02**

**γ Range: 0 - 180DEG**  
**γ Interval: 1.0DEG**  
**Test System:EVERFINE GO-2000B\_V1 SYSTEM V2.0.400**  
**Humidity:65.0%**  
**Test Distance:7.310m [K=1.0000]**  
**Remarks:**

**ISOCANDELA DIAGRAM**

Test:U:119.78V I:0.4527A P:53.878W PF:0.9936 Freq:49.99Hz Lamp Flux:6972.22x1 lm		
NAME: LED 54WT30/360°/CL/50K/MOG/V5	TYPE:360° HIGH WATTAGE	WEIGHT:
SPEC.:	DIM.: 95*260	SERIAL No.:1
MFR.: P.Q.L., Inc.	SUR.:	Shielding Angle:



**C Range: 0 - 360DEG**  
**C Interval: 22.5DEG**  
**Test Speed: HIGH**  
**Temperature: 25.3DEG**  
**Operators: LIU**  
**Test Date: 2017-11-02**

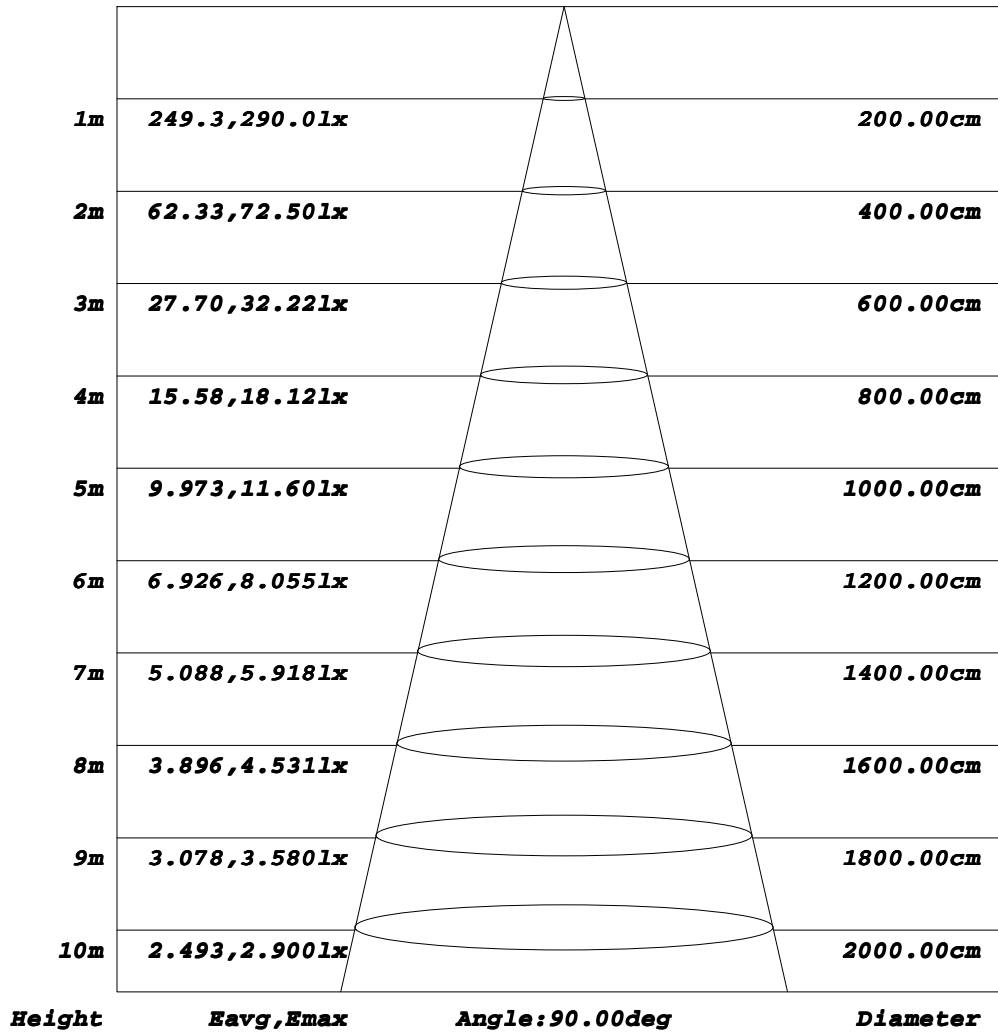
**γ Range: 0 - 180DEG**  
**γ Interval: 1.0DEG**  
**Test System: EVERFINE GO-2000B\_V1 SYSTEM V2.0.400**  
**Humidity: 65.0%**  
**Test Distance: 7.310m [K=1.0000]**  
**Remarks:**



**AAI Figure**

Test:U:119.78V I:0.4527A P:53.878W PF:0.9936 Freq:49.99Hz Lamp Flux:6972.22x1 lm		
NAME: LED 54WT30/360°/CL/50K/MOG/V5	TYPE:360° HIGH WATTAGE	WEIGHT:
SPEC.:	DIM.: 95*260	SERIAL No.:1
MFR.: P.Q.L., Inc.	SUR.:	Shielding Angle:

**Flux out:783.3 lm**



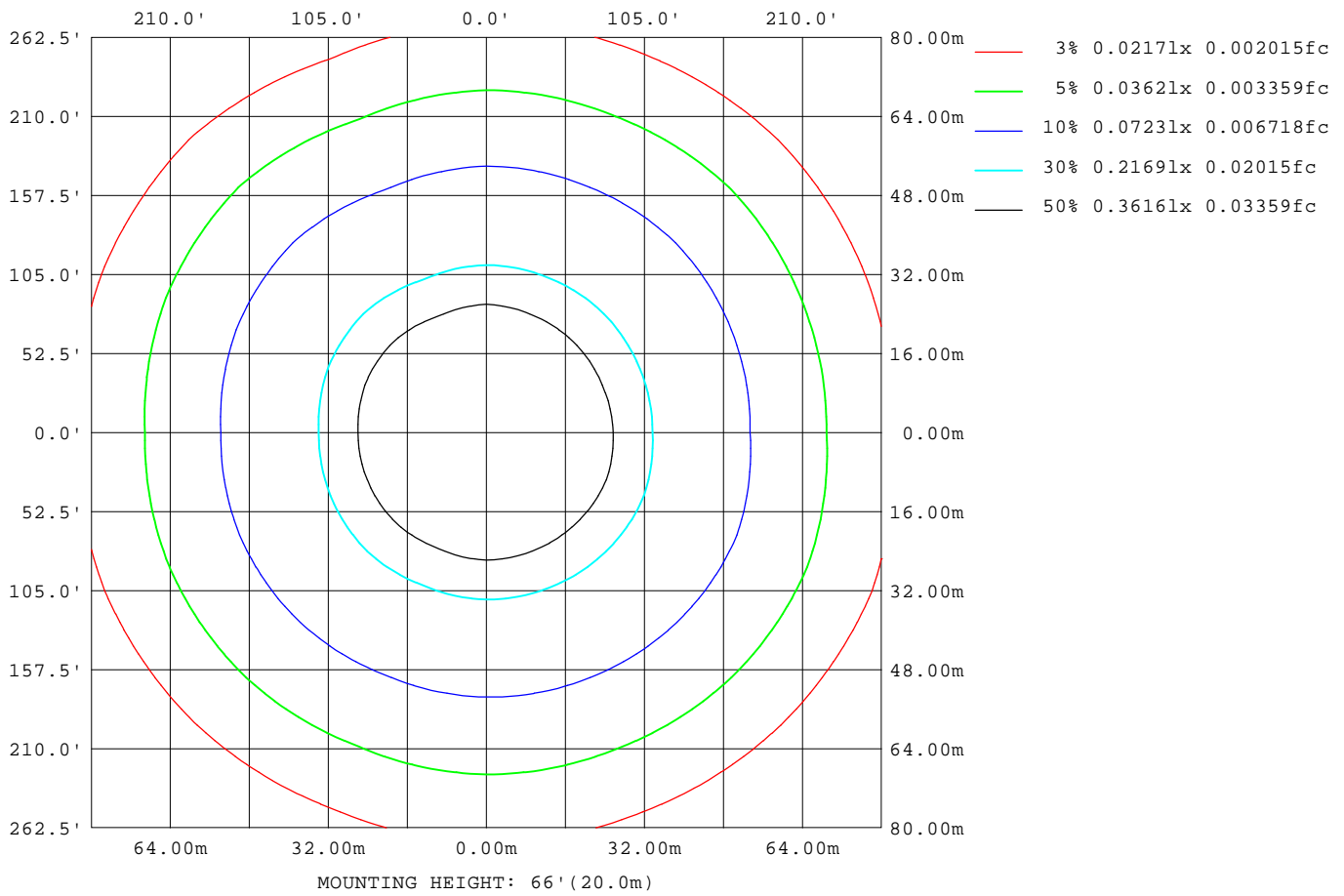
Note: The Curves indicate the illuminated area and the average illumination when the luminaire is at different distance.

**C Range: 0 - 360DEG**  
**C Interval: 22.5DEG**  
**Test Speed: HIGH**  
**Temperature: 25.3DEG**  
**Operators: LIU**  
**Test Date: 2017-11-02**

**γ Range: 0 - 180DEG**  
**γ Interval: 1.0DEG**  
**Test System: EVERFINE GO-2000B\_V1 SYSTEM V2.0.400**  
**Humidity: 65.0%**  
**Test Distance: 7.310m [K=1.0000]**  
**Remarks:**

**ISOLUX DIAGRAM**

Test:U:119.78V I:0.4527A P:53.878W PF:0.9936 Freq:49.99Hz Lamp Flux:6972.22x1 lm		
NAME: LED 54WT30/360°/CL/50K/MOG/V5	TYPE:360° HIGH WATTAGE	WEIGHT:
SPEC.:	DIM.: 95*260	SERIAL No.:1
MFR.: P.Q.L., Inc.	SUR.:	Shielding Angle:



**C Range: 0 - 360DEG**  
**C Interval: 22.5DEG**  
**Test Speed: HIGH**  
**Temperature: 25.3DEG**  
**Operators: LIU**  
**Test Date: 2017-11-02**

**γ Range: 0 - 180DEG**  
**γ Interval: 1.0DEG**  
**Test System: EVERFINE GO-2000B\_V1 SYSTEM V2.0.400**  
**Humidity: 65.0%**  
**Test Distance: 7.310m [K=1.0000]**  
**Remarks:**

**LED Avg.L Report**

Test:U:119.78V I:0.4527A P:53.878W PF:0.9936 Freq:49.99Hz Lamp Flux:6972.22x1 lm		
NAME: LED 54WT30/360°/CL/50K/MOG/V5	TYPE:360° HIGH WATTAGE	WEIGHT:
SPEC.:	DIM.: 95*260	SERIAL No.:1
MFR.: P.Q.L., Inc.	SUR.:	Shielding Angle:

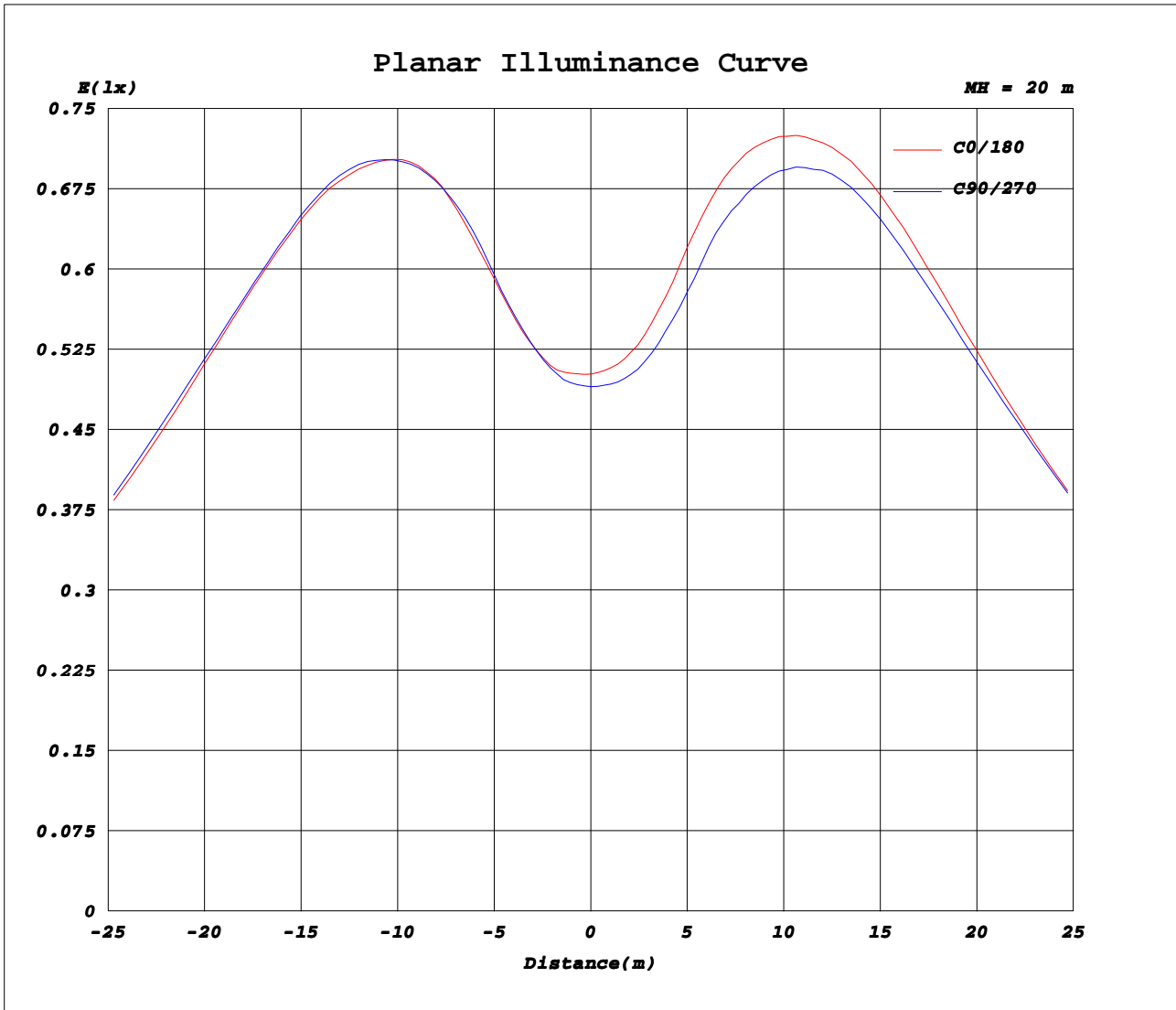
AvgL	cd/m2
L_0~180(65)av	52059
L_0~180(75)av	84231
L_0~180(85)av	250567
L_90~270(65)av	53617
L_90~270(75)av	87281
L_90~270(85)av	260806
L_45(65)av	55055
L_45(75)av	90052
L_45(85)av	269155

Standard: GB/T 29293-2012

**C Range: 0 - 360DEG**  
**C Interval: 22.5DEG**  
**Test Speed: HIGH**  
**Temperature:25.3DEG**  
**Operators:LIU**  
**Test Date:2017-11-02**

**γ Range: 0 - 180DEG**  
**γ Interval: 1.0DEG**  
**Test System:EVERFINE GO-2000B\_V1 SYSTEM V2.0.400**  
**Humidity:65.0%**  
**Test Distance:7.310m [K=1.0000]**  
**Remarks:**

**Planar Illuminance Curve**



**C Range: 0 - 360DEG**  
**C Interval: 22.5DEG**  
**Test Speed: HIGH**  
**Temperature: 25.3DEG**  
**Operators: LIU**  
**Test Date: 2017-11-02**

**γ Range: 0 - 180DEG**  
**γ Interval: 1.0DEG**  
**Test System: EVERFINE GO-2000B\_V1 SYSTEM V2.0.400**  
**Humidity: 65.0%**  
**Test Distance: 7.310m [K=1.0000]**  
**Remarks:**

**LUMINOUS DISTRIBUTION INTENSITY DATA**

Test:U:119.78V I:0.4527A P:53.878W PF:0.9936 Freq:49.99Hz Lamp Flux:6972.22x1 Lm		
NAME: LED 54WT30/360°/CL/50K/MOG/V5	TYPE:360° HIGH WATTAGE	WEIGHT:
SPEC.:	DIM.: 95*260	SERIAL No.:1
MFR.: P.Q.L., Inc.	SUR.:	Shielding Angle:

Table--1

UNIT: cd

C (DEG) \ γ (DEG)	0	22.5	45	67.5	90	112.5	135	157.5	180	202.5	225	247.5	270	292.5	315	337.5			
0	197	197	197	197	197	197	197	197	197	197	197	197	197	197	197	197			
5	200	201	201	201	204	206	208	209	204	204	204	204	202	199	198	196			
10	222	222	224	223	228	233	237	240	230	229	227	229	223	218	213	211			
15	262	262	263	262	271	278	285	287	276	273	269	272	263	253	247	243			
20	314	314	315	313	322	329	337	338	327	323	321	325	316	305	299	292			
25	368	369	366	366	376	380	390	392	379	376	378	377	371	357	352	346			
30	420	424	420	420	432	433	450	452	435	435	440	432	428	413	405	401			
35	475	483	478	477	489	487	505	509	492	494	500	485	487	473	464	459			
40	524	537	531	529	540	532	550	559	542	545	548	532	537	526	522	515			
45	566	582	574	572	585	572	592	602	580	591	590	570	582	572	569	566			
50	598	618	612	610	620	605	629	637	612	629	629	601	622	608	609	609			
55	622	649	643	639	643	632	658	662	635	660	661	624	647	638	643	643			
60	639	674	670	661	661	652	681	684	651	684	687	642	664	662	670	667			
65	654	697	692	675	681	671	699	702	666	703	710	662	679	677	691	686			
70	653	709	701	680	676	669	695	710	668	707	714	660	687	691	709	699			
75	649	699	696	673	677	664	693	704	659	696	708	647	679	681	701	692			
80	647	702	697	671	676	666	694	708	654	695	705	651	677	679	701	693			
85	653	709	702	674	679	672	698	711	658	699	711	659	685	681	704	694			
90	654	712	703	674	679	673	697	709	657	698	711	660	684	681	707	698			
95	651	711	701	671	676	671	692	703	654	694	708	659	681	677	706	698			
100	644	704	692	662	666	662	681	691	646	685	699	652	672	668	700	693			
105	632	689	677	648	652	648	664	672	633	669	682	641	657	653	687	683			
110	615	665	657	629	632	629	640	646	615	646	659	623	637	634	667	666			
115	592	637	629	604	607	603	610	613	591	617	631	600	613	610	641	643			
120	564	602	595	574	576	572	574	574	562	583	596	570	584	580	609	613			
125	529	561	556	537	537	535	531	529	527	542	556	536	549	545	572	577			
130	490	515	510	495	490	486	480	477	485	495	510	495	504	505	529	532			
135	444	465	457	447	439	432	425	423	438	441	457	448	454	459	479	478			
140	394	407	398	393	385	373	364	362	385	384	399	395	400	407	422	420			
145	335	347	335	334	323	312	300	298	327	324	337	330	337	346	359	361			
150	271	277	266	268	260	247	232	231	261	258	269	259	269	280	291	296			
155	205	205	199	201	193	179	168	166	193	191	202	193	203	214	221	227			
160	144	143	138	142	132	120	112	108	133	132	139	135	143	153	156	162			
165	87.7	88.2	83.2	86.4	78.0	69.0	62.2	58.4	78.3	77.8	83.9	79.3	86.4	95.0	98.8	105			
170	43.1	41.9	39.9	42.2	36.8	31.7	27.3	24.6	36.7	36.6	39.2	37.5	42.4	47.8	50.7	54.2			
175	16.7	16.5	16.1	16.6	15.0	13.1	11.4	10.5	13.7	14.2	15.0	14.6	16.6	18.6	20.3	21.3			
180	8.14	8.17	8.09	8.14	8.10	8.14	8.09	8.15	8.20	8.11	8.15	8.09	8.15	8.10	8.14	8.11			

**C Range: 0 - 360DEG**  
**C Interval: 22.5DEG**  
**Test Speed: HIGH**  
**Temperature: 25.3DEG**  
**Operators: LIU**  
**Test Date: 2017-11-02**

**γ Range: 0 - 180DEG**  
**γ Interval: 1.0DEG**  
**Test System: EVERFINE GO-2000B\_V1 SYSTEM V2.0.400**  
**Humidity: 65.0%**  
**Test Distance: 7.310m [K=1.0000]**  
**Remarks:**