



CIRCA 2

Round Edge-Lit LED

Performance Data

CRI

82+ Standard, 90+ Optional

CCT

Selectable 3000K, 3500K, 4000K

Projected Lifetime

104,000 Hours (L70)

Dimming

0-10V Dimming Standard, 100% down to 1%

Operating Temperature

-20° to +40°C Ambient

Listing

ETL Listed

Client: _____
Project Name: _____

Order #: _____
Type: _____ Qty: _____



Description

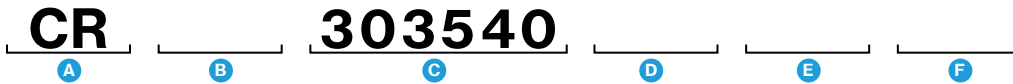
Design and performance all wrapped into one luminaire. The Circa 2 is tailor-made for the architectural community that demands high quality profiles centered around the latest LED technology available.

Acrylic matte diffusion cover is used to make the light more comfortable, edge lighting technology ensures even illumination of the lens.

The Circa 2 has several options, with five sizes corresponding to different lumens and a choice of up and down lighting or down lighting. The flexibility with (CLO) Custom Lumen Output allows this fixture to be used in multiple applications such as: Multi-purpose rooms, atrium, open offices, hospitality or retail establishment.

Features

- Heavy gauge extruded aluminum housing. Spun aluminum driver housing. Vacuum formed, single piece acrylic lens.
- Sizes: 14", 18", 24", 35" and 47" diameters
- Aircraft, Stem, Surface/Wall Mount
- Powder Coating finish is adopted, White Matte Texture, Black Matte Texture are standard, Silver Matte Texture customized.
- LED Light Engine is available as HLO (High Lumen Output) and SLO (Standard Lumen Output) providing efficient illumination, Support Direct, Indirect/Direct distribution.
- The Circa 2 boasts a single sheet acrylic matte diffusion cover to make it stand out from the competition. There are no seams on this elegant disc.



Ordering Information

A FIXTURE SERIES

CR Circa 2

B SIZE

| | |
|----|-----|
| 14 | 14" |
| 18 | 18" |
| 24 | 24" |
| 35 | 35" |
| 47 | 47" |

C CCT

303540 3000K/3500K/4000K

D MOUNTING

| | |
|----|------------------------|
| - | Aircraft Cable (8ftx3) |
| ST | Stem Mount (3ft) |
| SM | Surface/ Wall Mount |

E FINISH

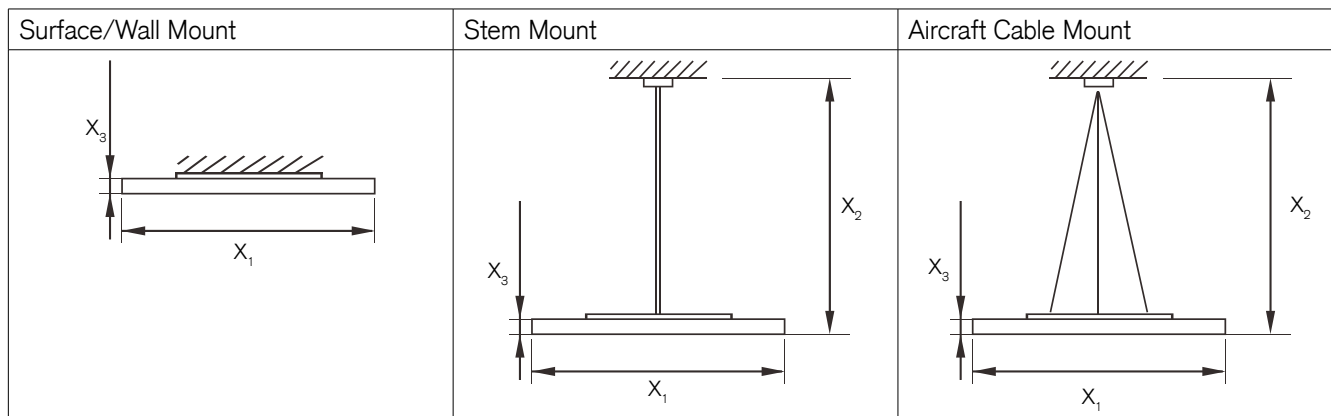
| | |
|---|-----------------|
| W | Textured White |
| B | Textured Black |
| S | Textured Silver |

F WARRANTY¹

| | |
|-----|----------------------------------|
| - | 5 Year Warranty |
| 10 | 10 Year Warranty |
| 10L | 10 Year Warranty including labor |

¹ 5 Year Warranty is Standard unless specified

Dimensions



Inches

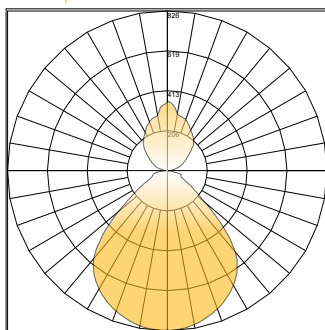
| | Surface/Wall Mount | Stem Mount | Aircraft Cable Mount |
|----------------------|---------------------|---------------------|----------------------|
| X₁ | 14"/18"/24"/35"/47" | 14"/18"/24"/35"/47" | 14"/18"/24"/35"/47" |
| X₂ | - | 36" | 96" |
| X₃ | 2.2" | 2.2" | 2.2" |

Lumen Chart

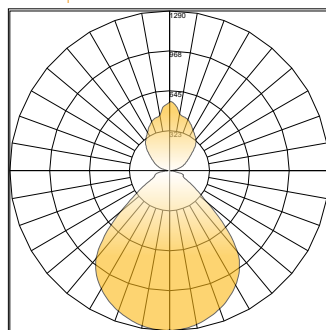
| Size | Wattage/ Lumens |
|---------------|---------------------------|
| 14 14" | 23 23W/ 2000Lm |
| 18 18" | 40 40W/ 4000Lm |
| 24 24" | 62 62W/ 6800Lm |
| 35 35" | 100 100W/ 11500Lm |
| 47 47" | 132 132W/ 16000 Lm |

Photometric

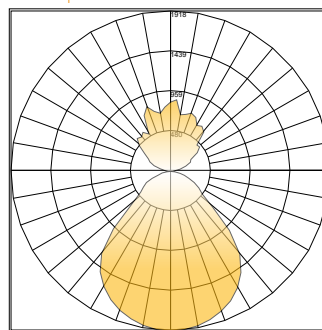
Polar Graph - 14" 30/35/40K 23W



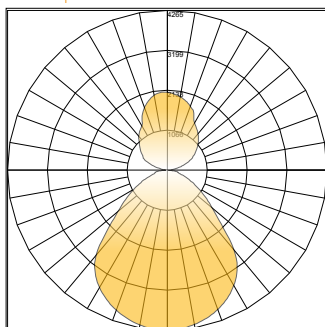
Polar Graph - 18" 30/35/40K 40W



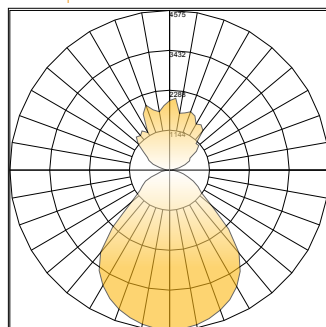
Polar Graph - 24" 30/35/40K 62W



Polar Graph - 36" 30/35/40K 100W



Polar Graph - 47" 30/35/40K 132W



Unified Glare Rating (UGR)

DECO LED Flat Panel with Flat Optix™ Lens:

- Light is redirected from 60° to 90° degrees of luminaire, UGR <19
- Conical structures built into the lens minimize high angle glare
- Allows for increased efficacy, rather than lumen output glaring at occupants
- High efficiency and energy saving
- Protection class: IP44 Damp Location Rated
- Increased productivity



□ = Volumetric flat panel with micro-prismatic lens will reduce glare going into the occupant's eyes
 — = 90° - - - = 60°

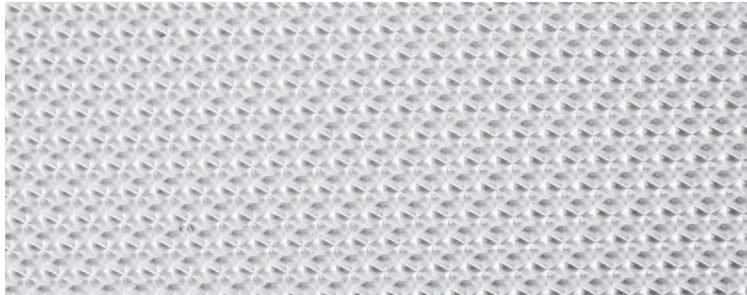
Standard LED Flat Panel:

- Harsh glare at viewing angles above 60°, UGR >24
- Wide beam angle at 120°
- Uncomfortable glare
- Reduction in visibility caused by intense light source in field of view
- Protection class: IP22 protects only from objects greater than 12 millimeters
- Loss of productivity



■ = High glare flat panel makes occupant's eyes feel uncomfortable
 — = 90° - - - = 60°

Flat Optics™ Detail



Micro-prismatic technology redirects high-angle light, reducing visual glare. The light above 60° is suppressed to improve the Unified Glare Rating (UGR). This allows for the luminaire to be IESNA RP1-04 & EN12464 compliant, which are standards for office and indoor lighting.

UGR Criteria

| UGR: | Hopkinson's Criterion: |
|------|------------------------|
| <10 | Imperceptible |
| <13 | Just Perceptible |
| <16 | Perceptible |
| <19 | Acceptable |
| >22 | Unacceptable |
| >25 | Just Uncomfortable |
| >28 | Uncomfortable |

Micro-prismatic conical structures provide the most optimal luminance of a fixture from any viewing angle. The UGR rating of less than 19 provides the most acceptable glare for task lighting.

Lutron Options

- VW0** FCJS-010 PowPak module for 0-10V drivers (also has FCJS-ECO module for Lutron drivers)
- VWS0** FCJS-010 Powpak module with FC-SENSOR wired sensor for 0-10V drivers (also has FCJS-ECO option for Lutron)
- ES1** Lutron LDE1 Series EcoSystem 1% Dimming with Soft On Fade to Black
- ES5** Lutron LDE5 Series EcoSystem 5% dimming

Lutron Vive Lighting Control System (applies to VW0 and VWS0 options)

Lutron Vive is a revolutionary wireless lighting control solution for new and existing commercial buildings, combining a variety of lighting control strategies with controls and sensors to maximize efficiency and system flexibility. A Lutron Vive lighting control solution can reduce energy consumption by 60% or more by employing the following strategies:

- Occupancy/vacancy sensing turns lights on when occupants are in a space and off when they vacate the space.
- Daylight harvesting dims electric lights when daylight is available to light the space.
- Scheduling provides pre-programmed changes in light levels based on time of day.
- Demand response automatically reduces lighting loads during peak electricity usage times.
- Plug load control automatically turns off loads after occupants leave a space.
- Personal dimming control gives occupants the ability to adjust the light level.
- HVAC integration controls heating, ventilation, and air conditioning systems through contact closure, or BACnet protocol.
- System Optimization Service from Lutron identifies important lighting control adjustments to save additional energy and create a more productive work environment on an ongoing basis.
- High-end trim sets the maximum light level based on customer requirements in each space.