



**ROUND EDGE-LIT LED  
Performance Data**

**CRI**

82+ Standard, 90+ Optional

**Tone-Select™ - CCT Selectable**

3000K, 3500K, 4000K

**Voltage**

120-277V

**Projected Lifetime**

50,000 Hours (L70)

**Dimming**

0-10V Dimming Standard,  
100% down to 1%

**Operating Temperature**

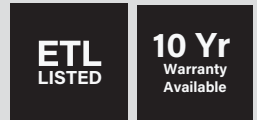
-4F° to 122°F (-20°C to +50°C)

**Listing**

Suitable for indoor, dry and damp locations.

Client: \_\_\_\_\_  
Project: \_\_\_\_\_

Order #: \_\_\_\_\_  
Type: \_\_\_\_\_ Qty: \_\_\_\_\_



**Description**

The Circa 2™ luminaire seamlessly integrates design and performance, catering to the discerning architectural community with top-tier profiles and cutting-edge LED technology. Its acrylic matte diffusion cover enhances comfort and light quality, while edge lighting ensures consistent and uniform illumination.

Offering versatility, Circa 2™ comes in five sizes with varying lumen outputs and a choice of up, down, or combined lighting. Custom Lumen Output (CLO) capability further enhances its adaptability, making it suitable for spaces ranging from multi-purpose rooms to retail establishments, adapting effortlessly to diverse environments.

**Features**

- Heavy gauge extruded aluminum housing. Spun aluminum driver housing. Vacuum formed, single piece acrylic lens.
- Sizes: 14", 18", 24", 35" and 47" diameters
- Aircraft, Stem, Surface/Wall Mount
- Powder Coating finish is adopted, White Matte Texture, Black Matte Texture are standard, Silver Matte Texture customized.
- LED Light Engine is available as HLO (High Lumen Output) and SLO (Standard Lumen Output) providing efficient illumination, Support Direct, Indirect/Direct distribution.
- The Circa 2™ boasts a single sheet acrylic matte diffusion cover to make it stand out from the competition. There are no seams on this elegant disc.

Listed

**Ordering Information**

**A FIXTURE SERIES**

CRI Circa 2™

**B SIZE**

14	14"
18	18"
24	24"
35	35"
47	47"

**C CCT**

303540 3000K/3500K/4000K

**D FINISH**

W	Textured White
B	Textured Black

Custom colors available upon request

**E MOUNTING OPTIONS**

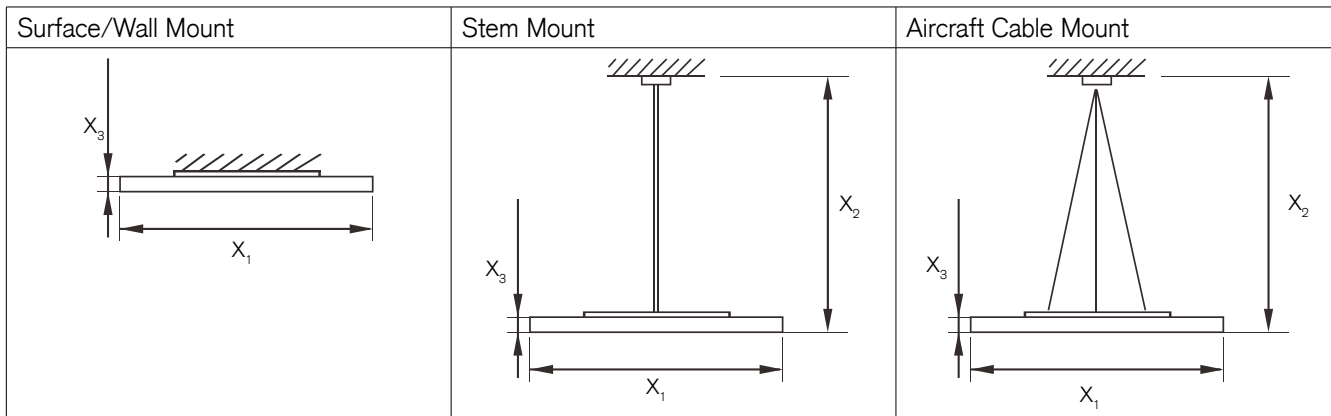
CR-AC-W-96	Aircraft Cable (96inx3) White Canopy
CR-AC-B-96	Aircraft Cable (96inx3) Black Canopy
CR1424-STMK-W	Stem Mount for 14", 18" & 24" White (39.5in)
CR1424-STMK-B	Stem Mount for 14", 18" & 24" Black (39.5in)
CR3547-STMK-W	Stem Mount for 35" & 47" White (39.5in)
CR3547-STMK-B	Stem Mount for 35" & 47" Black (39.5in)
CR14-SMK-W	Surface Mount for 14" & 18" White
CR14-SMK-B	Surface Mount for 14" & 18" Black
CR24-SMK-W	Surface Mount for 24" White
CR24-SMK-B	Surface Mount for 24" Black
CR3547-SMK-W	Surface Mount for 37 & 47" White
CR3547-SMK-B	Surface Mount for 37 & 47" Black

**F WARRANTY<sup>1</sup>**

-	5 Year Warranty
10	10 Year Warranty
10L	10 Year Warranty including labor

<sup>1</sup>5 Year Warranty is Standard unless specified

**Dimensions**



**Inches**

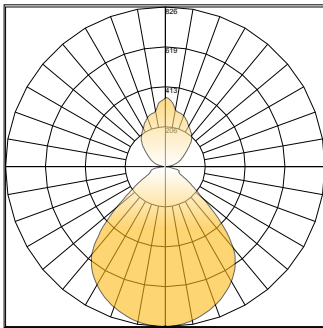
	Surface/Wall Mount	Stem Mount	Aircraft Cable Mount
<b>X<sub>1</sub></b>	14"/18"/24"/35"/47"	14"/18"/24"/35"/47"	14"/18"/24"/35"/47"
<b>X<sub>2</sub></b>	-	39.5"	96"
<b>X<sub>3</sub></b>	2.2"	2.2"	2.2"

**Specification Chart**

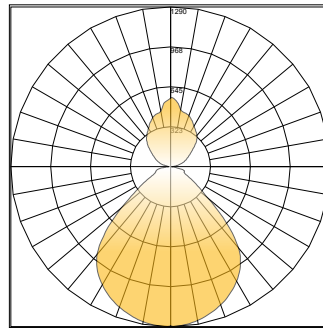
Size	Wattage	Lumens		Output Current		Replacement Driver
		Up Light	Down Light			
14	14"	28	700LM / 1800LM	700mA		XZ-SA30B-420070
18	18"	50	1500LM / 3500LM	1200mA		XZ-SA50B-420125
24	24"	62	2000LM / 4500LM	1500mA		XZ-SA60B-420150
35	35"	123	4200LM / 10000LM	D1: 1400mA	D2: 1400mA	XZ-SA60B-420150 (2 ea.)
47	47"	132	4700LM / 11000LM	D1: 1500mA	D2: 1500mA	XZ-SA60B-420150 (2 ea.)

**Photometric**

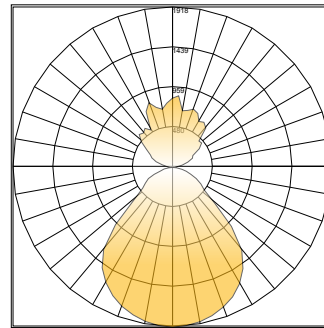
Polar Graph - 14" 30/35/40K 28W



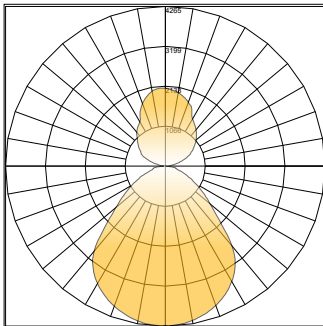
Polar Graph - 18" 30/35/40K 40W



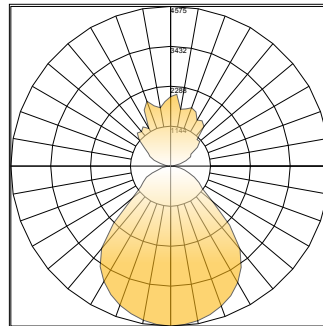
Polar Graph - 24" 30/35/40K 68W



Polar Graph - 36" 30/35/40K 123W



Polar Graph - 47" 30/35/40K 132W



## Unified Glare Rating (UGR)

### LED Flat Panel with micro-prismatic technology:

- Light is redirected from 60° to 90° degrees of luminaire, UGR <19
- Conical structures built into the lens minimize high angle glare
- Allows for increased efficacy, rather than lumen output glaring at occupants
- High efficiency and energy saving
- Protection class: IP20 Damp Location Rated
- Increased productivity



□ = Volumetric flat panel with micro-prismatic lens will reduce glare going into the occupant's eyes — = 90° ..... = 60°

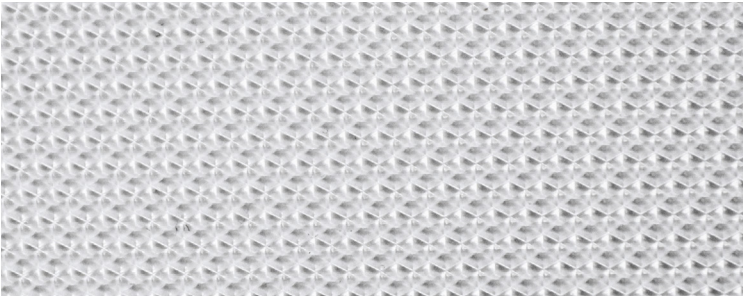
### Standard LED Flat Panel:

- Harsh glare at viewing angles above 60°, UGR >24
- Wide beam angle at 120°
- Uncomfortable glare
- Reduction in visibility caused by intense light source in field of view
- Protection class: IP22 protects only from objects greater than 12 millimeters
- Loss of productivity



■ = High glare flat panel makes occupant's eyes feel uncomfortable — = 90° ..... = 60°

## Optics Detail



Micro-prismatic technology redirects high-angle light, reducing visual glare. The light above 60° is suppressed to improve the Unified Glare Rating (UGR). This allows for the luminaire to meet recommended standards for office and indoor lighting.

## UGR Criteria

UGR:	Hopkinson's Criterion:
<10	Imperceptible
<13	Just Perceptible
<16	Perceptible
<19	Acceptable
>22	Unacceptable
>25	Just Uncomfortable
>28	Uncomfortable

Micro-prismatic conical structures provide the most optimal luminance of a fixture from any viewing angle. The UGR rating of less than 19 provides the most acceptable glare for task lighting.