



ROUND EDGE-LIT LED
Performance Data

CRI

82+ Standard, 90+ Optional

Tone-Select™ - CCT Selectable

3000K, 3500K, 4000K

Voltage

120-277V

Projected Lifetime

50,000 Hours (L70)

Dimming

0-10V Dimming Standard,
100% down to 1%

Operating Temperature

-4F° to 122°F (-20°C to +50°C)

Listing

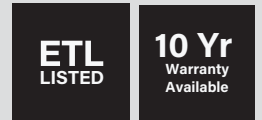
Suitable for indoor, dry and damp locations.

Client: _____

Order #: _____

Project: _____

Type: _____ Qty: _____



Description

The Circa 2™ luminaire seamlessly integrates design and performance, catering to the discerning architectural community with top-tier profiles and cutting-edge LED technology. Its acrylic matte diffusion cover enhances comfort and light quality, while edge lighting ensures consistent and uniform illumination.

Offering versatility, Circa 2™ comes in five sizes with varying lumen outputs and a choice of up, down, or combined lighting. Custom Lumen Output (CLO) capability further enhances its adaptability, making it suitable for spaces ranging from multi-purpose rooms to retail establishments, adapting effortlessly to diverse environments.

Features

- Heavy gauge extruded aluminum housing. Spun aluminum driver housing. Vacuum formed, single piece acrylic lens.
- Sizes: 14", 18", 24", 35" and 47" diameters
- Aircraft, Stem, Surface/Wall Mount
- Powder Coating finish is adopted, White Matte Texture, Black Matte Texture are standard, Silver Matte Texture customized.
- LED Light Engine is available as HLO (High Lumen Output) and SLO (Standard Lumen Output) providing efficient illumination, Support Direct, Indirect/Direct distribution.
- The Circa 2™ boasts a single sheet acrylic matte diffusion cover to make it stand out from the competition. There are no seams on this elegant disc.

Listed

Ordering Information

A FIXTURE SERIES

CRI Circa 2™

B SIZE

| | |
|----|-----|
| 14 | 14" |
| 18 | 18" |
| 24 | 24" |
| 35 | 35" |
| 47 | 47" |

C CCT

303540 3000K/3500K/4000K

D FINISH

| | |
|---|----------------|
| W | Textured White |
| B | Textured Black |

Custom colors available upon request

E MOUNTING OPTIONS

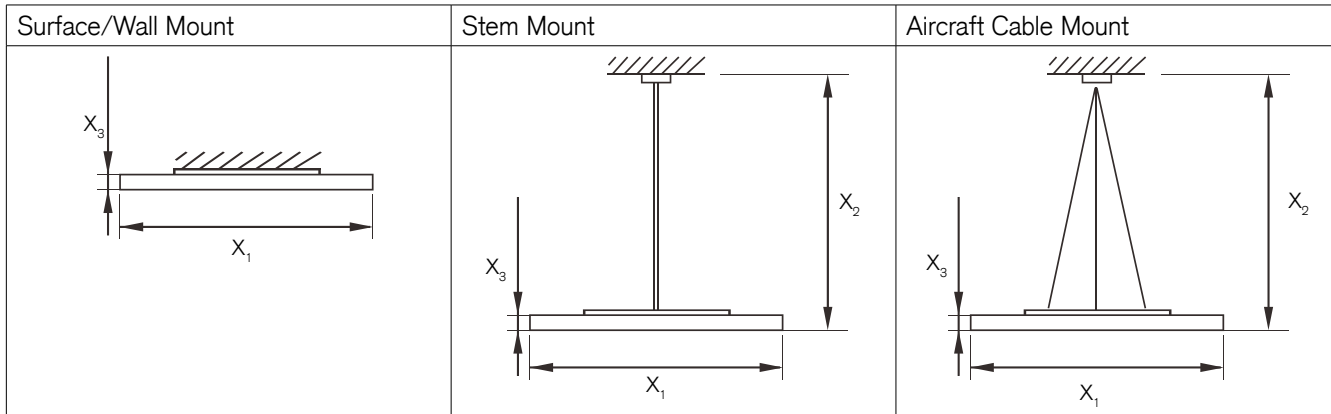
| | |
|---------------|--|
| CR-AC-W-96 | Aircraft Cable (96inx3) White Canopy |
| CR-AC-B-96 | Aircraft Cable (96inx3) Black Canopy |
| CR1424-STMK-W | Stem Mount for 14", 18" & 24" White (39.5in) |
| CR1424-STMK-B | Stem Mount for 14", 18" & 24" Black (39.5in) |
| CR3547-STMK-W | Stem Mount for 35" & 47" White (39.5in) |
| CR3547-STMK-B | Stem Mount for 35" & 47" Black (39.5in) |
| CR14-SMK-W | Surface Mount for 14" & 18" White |
| CR14-SMK-B | Surface Mount for 14" & 18" Black |
| CR24-SMK-W | Surface Mount for 24" White |
| CR24-SMK-B | Surface Mount for 24" Black |
| CR3547-SMK-W | Surface Mount for 37 & 47" White |
| CR3547-SMK-B | Surface Mount for 37 & 47" Black |

F WARRANTY¹

| | |
|-----|----------------------------------|
| - | 5 Year Warranty |
| 10 | 10 Year Warranty |
| 10L | 10 Year Warranty including labor |

¹5 Year Warranty is Standard unless specified

Dimensions



Inches

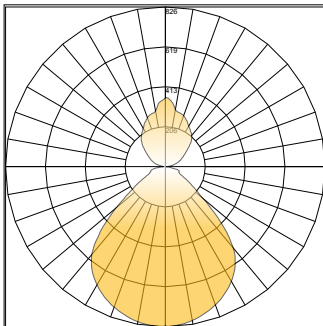
| | Surface/Wall Mount | Stem Mount | Aircraft Cable Mount |
|----------------------|---------------------|---------------------|----------------------|
| X₁ | 14"/18"/24"/35"/47" | 14"/18"/24"/35"/47" | 14"/18"/24"/35"/47" |
| X₂ | - | 39.5" | 96" |
| X₃ | 2.2" | 2.2" | 2.2" |

Specification Chart

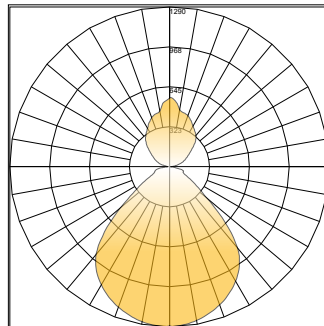
| Size | Wattage | Lumens | | Output Current | | Replacement Driver |
|------|---------|----------|------------------|----------------|------------|-------------------------|
| | | Up Light | Down Light | | | |
| 14 | 14" | 28 | 700LM / 1800LM | 700mA | | XZ-SA30B-420070 |
| 18 | 18" | 50 | 1500LM / 3500LM | 1200mA | | XZ-SA50B-420125 |
| 24 | 24" | 62 | 2000LM / 4500LM | 1500mA | | XZ-SA60B-420150 |
| 35 | 35" | 123 | 4200LM / 10000LM | D1: 1400mA | D2: 1400mA | XZ-SA60B-420150 (2 ea.) |
| 47 | 47" | 132 | 4700LM / 11000LM | D1: 1500mA | D2: 1500mA | XZ-SA60B-420150 (2 ea.) |

Photometric

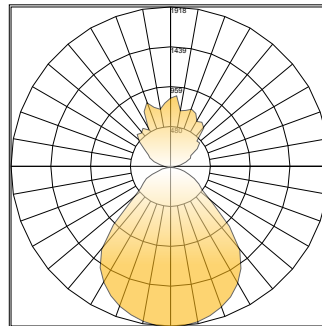
Polar Graph - 14" 30/35/40K 28W



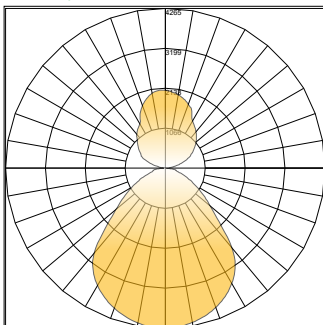
Polar Graph - 18" 30/35/40K 40W



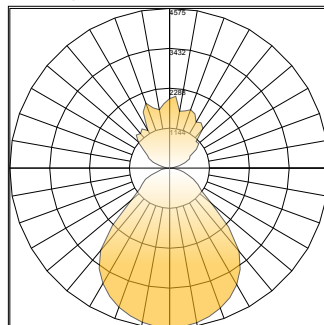
Polar Graph - 24" 30/35/40K 68W



Polar Graph - 36" 30/35/40K 123W



Polar Graph - 47" 30/35/40K 132W



Unified Glare Rating (UGR)

LED Flat Panel with micro-prismatic technology:

- Light is redirected from 60° to 90° degrees of luminaire, UGR <19
- Conical structures built into the lens minimize high angle glare
- Allows for increased efficacy, rather than lumen output glaring at occupants
- High efficiency and energy saving
- Protection class: IP20 Damp Location Rated
- Increased productivity



□ = Volumetric flat panel with micro-prismatic lens will reduce glare going into the occupant's eyes — = 90° = 60°

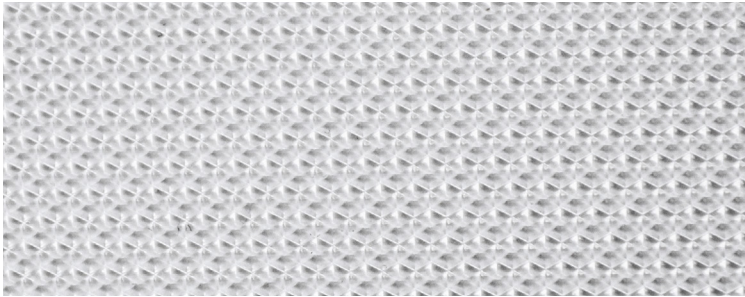
Standard LED Flat Panel:

- Harsh glare at viewing angles above 60°, UGR >24
- Wide beam angle at 120°
- Uncomfortable glare
- Reduction in visibility caused by intense light source in field of view
- Protection class: IP22 protects only from objects greater than 12 millimeters
- Loss of productivity



■ = High glare flat panel makes occupant's eyes feel uncomfortable — = 90° = 60°

Optics Detail



Micro-prismatic technology redirects high-angle light, reducing visual glare. The light above 60° is suppressed to improve the Unified Glare Rating (UGR). This allows for the luminaire to meet recommended standards for office and indoor lighting.

UGR Criteria

| UGR: | Hopkinson's Criterion: |
|------|------------------------|
| <10 | Imperceptible |
| <13 | Just Perceptible |
| <16 | Perceptible |
| <19 | Acceptable |
| >22 | Unacceptable |
| >25 | Just Uncomfortable |
| >28 | Uncomfortable |

Micro-prismatic conical structures provide the most optimal luminance of a fixture from any viewing angle. The UGR rating of less than 19 provides the most acceptable glare for task lighting.