

# DCH-RET™

## Channel Retrofit Kit

Client: \_\_\_\_\_ Order #: \_\_\_\_\_  
 Project Name: \_\_\_\_\_ Type: \_\_\_\_\_ Qty: \_\_\_\_\_

### Performance Data

**CRI**  
80+

**Tone-Select™ - CCT Selectable**  
3500K, 4000K, 5000K

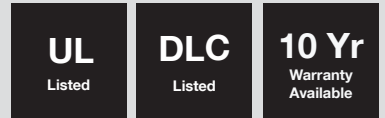
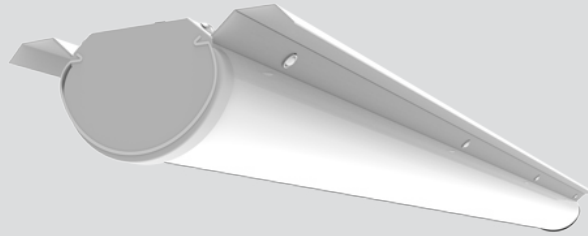
**Projected Lifetime**  
>173,000 Hours (L70);  
>50,000 Hours (L90)

**Dimming**  
0-10V Dimming Standard,  
100% down to 10%

**Operating Temperature**  
-20° to +50°C Ambient

**UL Listed**  
UL, Suitable for dry and damp  
locations

**Warranty**  
5 year Standard  
10 year Optional



### Description

Convert your existing 4' and 8' fluorescent strips to our architectural high-end LED fixture by simply removing the ballast cover and installing our Channel Retrofit Kit, which includes a ribbed diffuser lens designed to eliminate LED pixilation. It's the perfect retrofit answer to save energy while upgrading the look of your fixtures to meet a higher, architectural standard. This innovative kit is designed to retrofit 4' and 8' strips or to provide continuous runs to energy-saving LED. The DCH-RET™ LED series is available in neutral or cool color temperatures and dimming comes standard. The DCH-RET™ LED upgrade retrofit kit is easy to install and fits almost any existing 4' or 8' linear strip, making it a perfect upgrade option where energy savings and long life are critical.

### Features

- LED Saves 60-75% of energy over HID and 40-50% over T8/T5HO.
- Die formed of 24 gauge cold-rolled steel body.
- All steel surface are painted after fabrication with high gloss baked white matte power painted.
- 0-10V standard dimming, optional Bi-Level Occupancy Sensor.
- Attaches to standard Fluorescent Strip lights from 4.25" to 5.25" wide.
- UL Listed for Dry and Damp locations, RoHS Compliant
- Performs at up to 130 lumens per watt, CRI 80+
- Tone-Select™ allows users to select between 5000K, 4000K, and 3500K in the field by simply switching an easily accessible three position switch. Fixture comes set/standard at 40K.

### Ordering Information

<b>A</b> FIXTURE SERIES	DCH-LED	Channel Retrofit Kit
<b>B</b> LENGTH	4	4'
	8	8'
<b>C</b> WATTAGE/LUMENS (LENGTH 4)	22	22W/2860 <sup>1</sup>
	35	35W/4550 <sup>1</sup>
	44	44W/5720 <sup>1</sup>
(LENGTH 8)	54	54W/7020 <sup>1</sup>
	68	68W/8840 <sup>1</sup>
	88	88W/11440 <sup>1</sup>

<b>D</b> CCT	354050	3500K-4000K-5000K
<b>E</b> VOLTAGE	U	120-277V
<b>F</b> FIXTURE TYPE	RET	Retrofit Kit
<b>G</b> OPTIONS	E	Emergency
	#54890	Motion Sensor
<b>H</b> WARRANTY <sup>2</sup>	-	5 Year Warranty
	10	10 Year Warranty
	10L	10 Year Warranty including labor

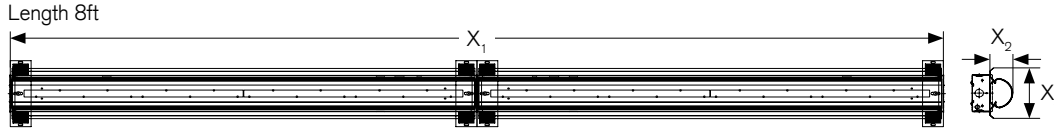
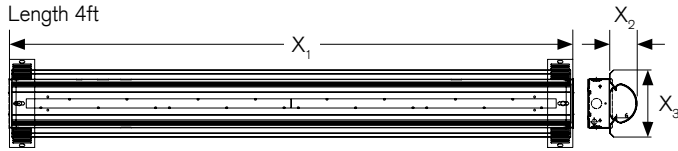


### Qualification Model #:

DP-DSR-4-22-3CCT-[Blank,EM]-[Blank,MS,BT]  
 DP-DSR-4-27-3CCT-[Blank,EM]-[Blank,MS,BT]  
 DP-DSR-4-35-3CCT-[Blank,EM]-[Blank,MS,BT]  
 DP-DSR-4-44-3CCT-[Blank,EM]-[Blank,MS,BT]  
 DP-DSR-8-54-3CCT-[Blank,EM]-[Blank,MS,BT]  
 DP-DSR-8-68-3CCT-[Blank,EM]-[Blank,MS,BT]  
 DP-DSR-8-88-3CCT-[Blank,EM]-[Blank,MS,BT]

<sup>1</sup> Delivered Lumens (4000K)  
<sup>2</sup> 5 Year Warranty is Standard unless specified

**Dimensions**



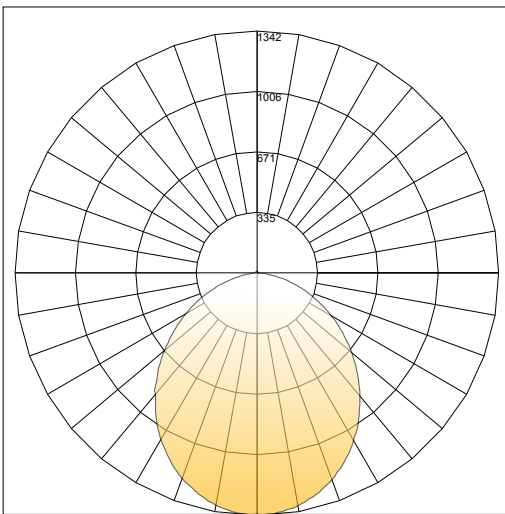
	Inches	
	Length 4	Length 8
<b>X<sub>1</sub></b>	47.73	96.69
<b>X<sub>2</sub></b>	2.87	2.87
<b>X<sub>3</sub></b>	5.76	5.76

**REPLACEMENT DRIVER**

DCH-LED4353540	SR42W1000CUL07
DCH-LED86835401	SR100W2000CUL07

**Photometric**

**POLAR GRAPH**  
DCH-LED-4-35-35050-U-RET



Maximum Candela = 1312,855 Located At Horizontal Angle = 180, Vertical Angle = 2  
# 1 - Vertical Plane Through Horizontal Angles (180 - 0) (Through Max. Cd.)

**COEFFICIENTS OF UTILIZATION - ZONAL CAVITY METHOD**

Effective Floor Cavity Reflectance 0.20

RC	80				70				50			30			10			0
	70	50	30	10	70	50	30	10	50	30	10	50	30	10	50	30	10	0
0	116	116	116	116	112	112	112	112	105	105	105	98	98	98	91	91	91	88
1	104	98	93	89	100	95	90	86	88	85	81	82	79	77	77	75	72	69
2	94	85	77	71	90	82	75	69	76	71	66	71	66	62	66	63	59	56
3	85	74	65	58	82	77	63	57	67	60	54	62	57	52	58	54	50	47
4	78	66	57	50	75	64	55	49	60	53	47	57	52	46	54	48	44	40
5	71	58	49	42	68	56	48	41	53	45	40	50	43	38	47	41	37	34
6	66	52	43	36	63	51	42	36	48	40	35	45	38	33	42	37	32	30
7	61	47	38	32	59	46	37	32	43	36	30	41	34	29	38	33	28	26
8	57	43	34	28	55	42	34	28	40	32	27	37	31	26	35	30	25	23
9	53	39	31	26	51	38	31	25	36	29	24	34	28	24	33	27	23	21
10	50	36	28	23	48	36	28	23	34	27	22	32	26	21	30	25	21	19

**LUMINANCE DATA (cd/sq.m)**

Angle In Degrees	Angle In Degrees	Angle In Degrees	Angle In Degrees
45	8829	6085	5975
55	7664	5081	5153
65	6284	4231	4463
75	4381	3543	3873
85	1586	3033	3417

**Application Photos**



Before



After