

DSW-LED

Surface Wraparound

Client: _____ Order #: _____
Project Name: _____ Type: _____ Qty: _____

Performance Data

CRI

80+

CCT

4000K

Projected Lifetime

>173,000 Hours (L70);

>50,000 Hours (L90)

Dimming

0-10V Dimming Standard

Operating Temperature

-20° to +50°C Ambient

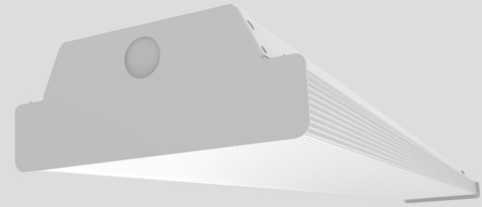
UL Listed

UL, Suitable for dry and damp locations

Warranty

5 year Standard

10 year Optional



UL

Listed

10 Yr

Warranty

Available

Description

The DSW series wraparound pairs economy styling with energy-efficient performance, delivering 130 lumens per watt. The luminaire's characteristic clean, low-profile design is both appealing and practically functional. This unit utilizes a clear, extruded acrylic refractor and a heavy gauge steel end plate with embossed light seal for dependable performance and good looks. The DSW wraparound is perfect for commercial spaces, school dormitories, offices and retail areas.

Features

- Die formed heavy gauge steel with side flanges for extra uniformity and rigidity.
- Fixture ends are die-formed for rigidity.
- Post painted powder coated white finish.
- Diffuser is designed for one-piece .125" thick prismatic lenses.
- Snap on diffusers for easy servicing and hinge from either side.
- UL listed for damp locations.
- Dimming (0-10V) standard
- 80+ CRI for crisp, accurate color rendering

A FIXTURE SERIES

DSW-LED Surface Wraparound

B LENGTH

2 2'

4 4'

C WATTAGE/LUMENS (LENGTH 2)

20 20W/3200¹

(LENGTH 4)

40 40W/5200¹

D CCT

40 4000K

E VOLTAGE

U 120-277V

F OPTIONS

E Emergency Battery

G WARRANTY²

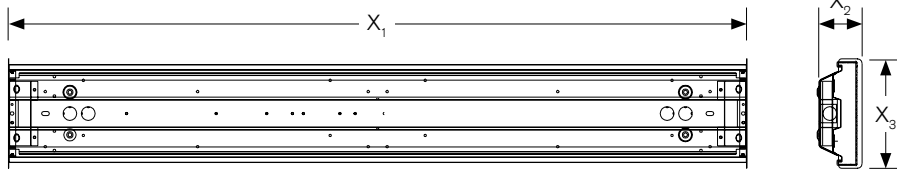
- 5 Year Warranty

10 10 Year Warranty

10L 10 Year Warranty including labor

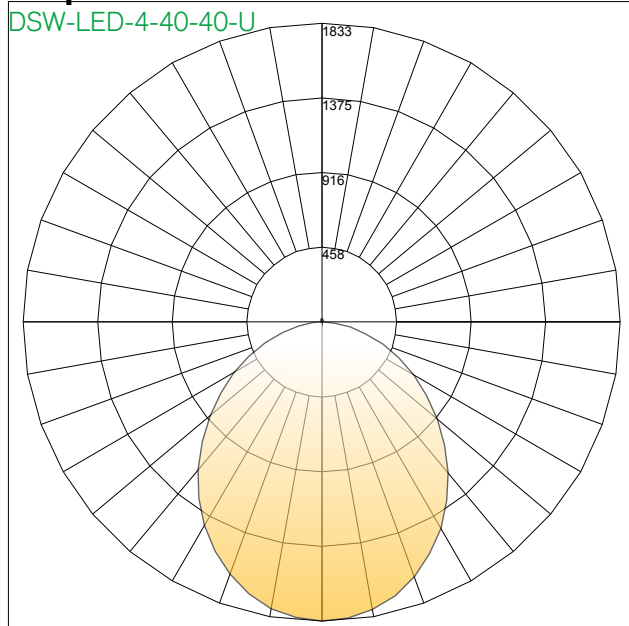
¹ Delivered Lumens (4000K)

Dimensions



Inches		REPLACEMENT DRIVER	
X₁	48.72	DSW-LED22040U	SR25W500CUL-03
X₂	2.54	DSW-LED44040U	SR45W1000CUL-01
X₃	6.54		

Photometric - Polar Graph



Lumen Chart

Size	Wattage	4000K	
		Lumens	LPW
DSW-LED-2-20-354050-U	20	3500	130
DSW-LED-4-40-354050-U	40	5200	130