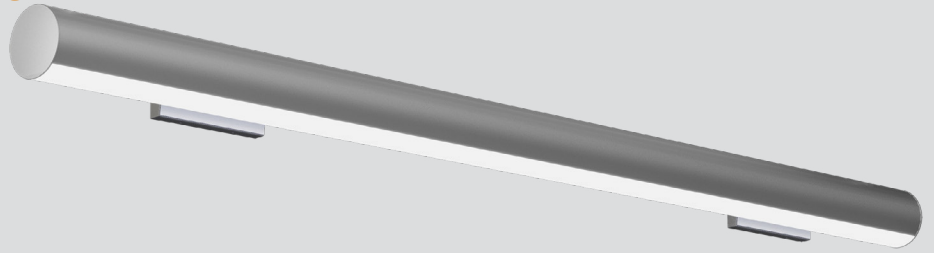


ELIO™ TUBE WALL

Interior Ambient LED Luminaire

Client: _____ Order #: _____
 Project Name: _____ Type: _____ Qty: _____



Performance Data

CRI

90+

CCT

2700K, 3000K, 3500K, 4000K,
5 Channel Color Tuning

Projected Lifetime

100,000+ Hours (L70)

Dimming

0-10V Dimming Standard

Operating Temperature

-40°C to +50°C Ambient

Warranty

5 year Standard
10 year Optional

10 Yr

Warranty
Available

BAA

Compliant
Available

Description

The Elio™ Tube is a sleek interior luminaire designed to complement the open, minimalist look of modern interior spaces. Featuring a sturdy, extruded aluminum housing, the Elio™ Tube is a specification-grade luminaire delivering quality illumination through its high-end diffuser lens. The Elio™ Tube is ideal for commercial, retail, and architectural spaces in both new construction and renovation applications.

Features

- Delivers up to 1,200 lm/ft at 4000K
- 90+ CRI for accurate interior color rendering
- R9 value of 60+
- Power Factor > 0.90; THD < 20%
- 5 Channel Color Tuning²
- Housing: 2.5" diameter extruded T5-6063 Aluminum with a clear anodized finish
- Housing features an internal integrated screw port for mounting drivers, controllers (for color tuning), end caps, and continuous run joiner hardware
- Lens: extruded acrylic blend with 80% transmissivity, designed with a snap-fit into the housing
- End caps: powder coated die-cast ADC aluminum; fastened to the housing with an internal galvanized steel pull bracket
- Mounting: pendant

Ordering Options **Contact sales representative to order.**

| FIXTURE SERIES | CCT | FINISH | RUN ⁴ |
|--------------------------|--|--|---|
| EV2W Elio™ Tube Wall | 27 2700K | B Black | — Standalone |
| LENGTH | 30 3000K | S Silver ⁵ | A First of Run |
| 2 2' | 35 3500K | W White | B Mid of Run |
| 3 3' | 40 4000K | C Custom | BP Mid of Run - Powerfeed |
| 4 4' | 5W 5 Channel Color Tuning ^{2,3} | OPTIONS | C End of Run |
| 6 6' | VOLTAGE | E Emergency | WARRANTY ⁷ |
| 8 8' | U 120-277V | ES1 Lutron LDE1 Series EcoSystem 1% Dimming with Soft on Fade to Black | - 5 Year Warranty |
| Sxxx System ⁶ | | | 10 10 Year Warranty |
| OUTPUT | | | 10L 10 Year Warranty including labor |
| L 6.4W/ft | | | |
| M 9.6W/ft | | | |
| H 12.8W/ft | | | |

³ Tunable CCT options only available at High Output setting.

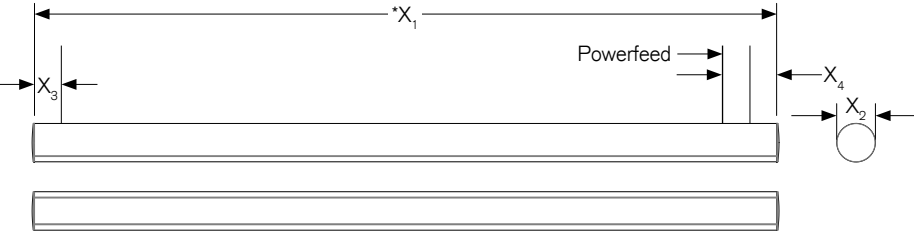
⁴ See Continuous Run Guide for additional information (separate document)

⁵ Standard

⁶ Replace "xxx" with desired system length, in feet. See Continuous Run Guide for additional information (separate document)

⁷ 5 Year Warranty is Standard unless specified

Dimensions



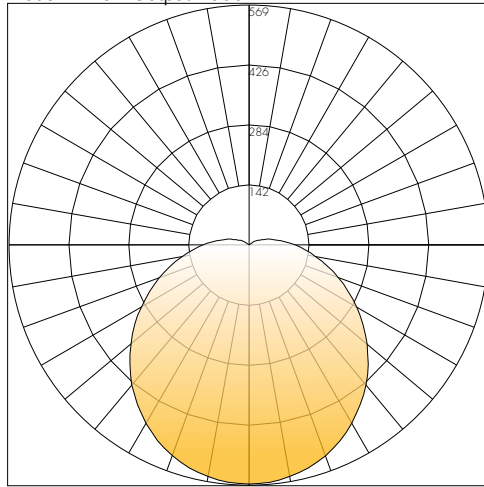
| | Inches | | | | |
|-----------------------|---------|---------|---------|---------|---------|
| | Size 2' | Size 3' | Size 4' | Size 6' | Size 8' |
| X₁ | 24.00 | 36.00 | 48.00 | 72.00 | 96.00 |
| *X₁ | 24.06 | 36.06 | 48.06 | 72.06 | 96.06 |
| X₂ | Ø2.50 | Ø2.50 | Ø2.50 | Ø2.50 | Ø2.50 |
| X₃ | 1.75 | 1.75 | 1.75 | 1.75 | 1.75 |
| X₄ | 3.00 | 3.00 | 3.00 | 3.00 | 3.00 |

X₁ = For B, BP, and C housings

*X₁ = For Standalone and A housings

Photometrics

Model 4' Low Output 4000K



Delivered Lumens: 1,892
CRI: 90

Coefficients of Utilization • Effective Floor Cavity Reflectance: 20%

| RCC% | 80 | | | | 70 | | | | 50 | | | 30 | | | 10 | | | 0 |
|-------|-----|-----|-----|-----|-----|-----|-----|-----|-----|-----|-----|-----|-----|-----|----|----|----|----|
| RW% | 70 | 50 | 30 | 0 | 70 | 50 | 30 | 0 | 50 | 30 | 20 | 50 | 30 | 20 | 50 | 30 | 20 | 0 |
| RCR:0 | 118 | 118 | 118 | 118 | 115 | 115 | 115 | 115 | 108 | 108 | 108 | 103 | 103 | 103 | 97 | 97 | 97 | 95 |
| 1 | 106 | 100 | 95 | 91 | 103 | 98 | 93 | 89 | 92 | 89 | 85 | 87 | 84 | 82 | 83 | 81 | 78 | 76 |
| 2 | 96 | 87 | 79 | 73 | 92 | 84 | 77 | 72 | 80 | 74 | 69 | 76 | 71 | 67 | 72 | 68 | 65 | 62 |
| 3 | 87 | 76 | 67 | 60 | 84 | 74 | 65 | 59 | 70 | 63 | 57 | 66 | 61 | 56 | 63 | 58 | 54 | 52 |
| 4 | 79 | 67 | 57 | 50 | 77 | 65 | 56 | 50 | 62 | 54 | 48 | 59 | 52 | 47 | 56 | 51 | 46 | 44 |
| 5 | 73 | 59 | 50 | 43 | 70 | 58 | 49 | 43 | 55 | 48 | 42 | 53 | 46 | 41 | 50 | 44 | 40 | 37 |
| 6 | 67 | 53 | 44 | 37 | 65 | 52 | 43 | 37 | 50 | 42 | 36 | 48 | 41 | 36 | 46 | 40 | 35 | 33 |
| 7 | 62 | 48 | 39 | 33 | 60 | 47 | 39 | 33 | 45 | 38 | 32 | 43 | 37 | 31 | 42 | 35 | 31 | 29 |
| 8 | 58 | 44 | 35 | 29 | 56 | 43 | 35 | 29 | 41 | 34 | 29 | 40 | 33 | 28 | 38 | 32 | 28 | 26 |
| 9 | 54 | 40 | 32 | 26 | 52 | 40 | 32 | 26 | 38 | 31 | 26 | 37 | 30 | 25 | 35 | 29 | 25 | 23 |
| 10 | 51 | 37 | 29 | 24 | 49 | 36 | 29 | 24 | 35 | 28 | 23 | 34 | 27 | 23 | 33 | 27 | 23 | 21 |

Zonal Lumen Summary

| Zone | Lumens | %Luminaire |
|--------|----------|------------|
| 0-30 | 441.04 | 23.3% |
| 0-40 | 725.25 | 38.3% |
| 0-60 | 1,303.97 | 68.9% |
| 0-90 | 1,798.39 | 95% |
| 90-180 | 93.95 | 5% |
| 0-180 | 1,892.01 | 100% |

Lumen Chart:

| 4' Model | HIGH | MID | LOW |
|----------|------|------|------|
| 2700K | 3643 | 2787 | 1930 |
| 3000K | 3572 | 2732 | 1892 |
| 3500K | 3501 | 2677 | 1854 |
| 4000K | 3393 | 2595 | 1797 |