

# LED SUPER HYBRID T8/U-LAMPS

## INSTALL INSTRUCTIONS



**PLEASE REVIEW THE INSTRUCTIONS AND WARNINGS BELOW PRIOR TO INSTALLATION.**

THIS PRODUCT MUST BE INSTALLED IN ACCORDANCE WITH THE APPLICABLE INSTALLATION CODE BY A PERSON FAMILIAR WITH THE CONSTRUCTION AND OPERATION OF THE PRODUCT AND THE HAZARDS INVOLVED.

**WARNINGS** - Risk of fire or electric shock. The electrical rating of these products are 120-277Vac, the installer must determine whether they have 120-277Vac at the luminaire before installation.

**WARNING** - Risk of fire or electric shock. LED Retrofit Kit installation requires knowledge of luminaires electrical systems. If not qualified, do not attempt installation. Contact a qualified electrician.

**WARNING** - Risk of fire or electric shock. Install this kit only in the luminaires that have the construction features and dimensions shown in the photographs and/or drawings and where the input rating of the retrofit kit does not exceed the input rating of the luminaire.

**WARNING** - To avoid potential fire or shock hazard, do not use this retrofit kit in luminaires employing shunted bi-pin lamp holders. Note: Shunted lamp holders are found only in fluorescent luminaires with Instant-Start ballasts. Instant-start ballasts can be identified by the words "Instant Start" or "I.S." marked on the ballast. This designation may be in the form of a statement pertaining to the ballast itself, or may be combined with the marking for the lamps with which the ballast is intended to be used, for example F40T12/IS. For more information, contact the LED luminaire retrofit kit manufacturer.

**WARNING** - To prevent wiring damage or abrasion, do not expose wiring to edges of sheet metal or other sharp objects. Do not make or alter any open holes in an enclosure of wiring or electrical components during kit installation.

Installers should not disconnect existing wires from lampholder terminals to make new connections at lampholder terminals. Instead installers should cut existing lampholder leads away from the lampholder and make new electrical connections to lampholder lead wires by employing applicable connectors. THE RETROFIT KIT IS ACCEPTED AS A COMPONENT OF A LUMINAIRE WHERE THE SUITABILITY OF THE COMBINATION SHALL BE DETERMINED BY AUTHORITIES HAVING THE JURISDICTION. PRODUCT MUST BE INSTALLED BY A QUALIFIED ELECTRICIAN IN ACCORDANCE WITH THE APPLICABLE AND APPROPRIATE ELECTRICAL CODES. THE INSTALLATION GUIDE DOES NOT SUPERSEDE LOCAL OR NATIONAL REGULATIONS FOR ELECTRICAL INSTALLATIONS.

Not for use with dimmers.

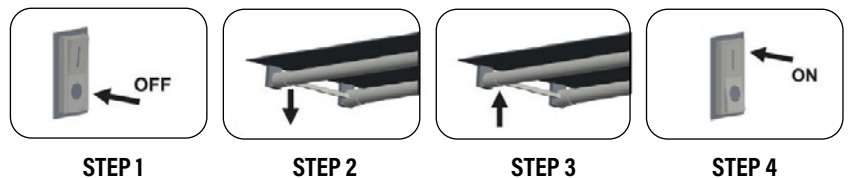
Suitable for damp locations.

This device is not intended for use with emergency exit fixtures or battery backups.

**! WARNING DISCONNECT POWER BEFORE INSTALLING OR SERVICING.**

### T8 DIRECT REPLACEMENT (PLUG & GO) INSTRUCTIONS (TYPE A):

1. Turn off power before installation.
2. Remove diffuser (if provided).
3. Remove existing fluorescent lamp(s) from luminaire.
4. Install LED T8 U-Lamp replacement.
5. Attach the diffuser and turn on the power switch to the fixture.

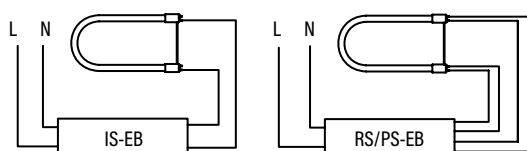


### T8 DIRECT WIRE (BALLAST BYPASS) ELECTRONIC OR MAGNETIC BALLAST INSTRUCTIONS (TYPE B):

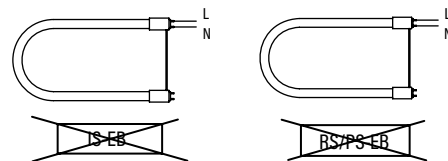
**STEP 1** - Turn off power before installation.

**STEP 2** - Remove; diffuser (if provided), existing fluorescent lamp(s), ballast and starter (if present) from the fixture. (Fig. 1 - Electric Ballast and Fig. 2 - Magnetic Ballast )

FIG. 1 - ELECTRIC BALLAST



**STEP A** - Remove the existing ballast.



**STEP B** - The wiring can be single end or double end. Refer to Fig. 3.

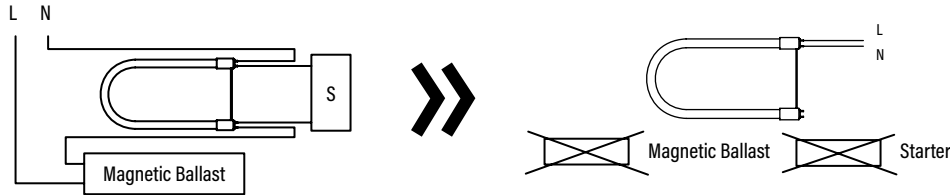
# LED SUPER HYBRID T8/U-LAMPS

## INSTALL INSTRUCTIONS



**⚠ WARNING DISCONNECT POWER BEFORE INSTALLING OR SERVICING.**

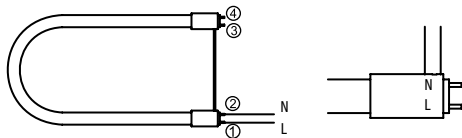
**FIG. 2 - MAGNETIC BALLAST**



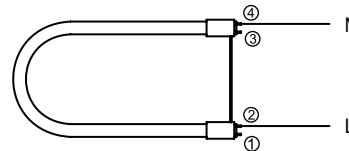
**STEP A** - Remove the existing ballast and starter.

**STEP B** - The wiring can be single end or double end. Refer to Fig. 3.

**STEP 3** - Rewire fixture to be Single Ended or Double Ended



**Single-Ended:** Lead 1 connects to L; Lead 2 connects to N, Leads 1 and 2 at the end of the lampholder with LN.



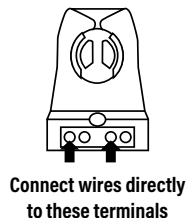
**Double-Ended:** Leads 1 or 2 connects to L; Leads 3 or 4 connects to N.

**CAUTION: USE ONLY NON-SHUNTED LAMP HOLDERS FOR SINGLE ENDED WIRING INSTALLATIONS.**

Do not perform Single-Ended wiring installation of product in a fixture with shunted lampholders (found in all fixtures using instant start ballasts). If the existing lampholders are shunted, and Single-Ended wiring is desired, remove and replace them with non-shunted lamp holders (or remove the external shunt if applicable). Make new connections directly to lampholder terminals as shown in Fig. A.

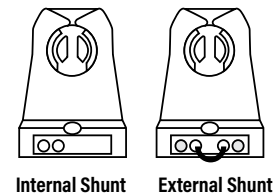
**Fig. A - TYPICAL NON-SHUNTED LAMPHOLDER**

If the sockets are non-shunted, they can be wired for either single end and double end.



**Fig. B - TYPICAL SHUNTED LAMP HOLDERS**

If the sockets are shunted, they can only be wired for double end.



**STEP 4** - After wiring modification is complete, place CAUTION label included with this kit in a location where it is visible to installers. Fixture has been modified to operate LED Lamps and can no longer operate fluorescent lamps.

**STEP 5** - Install LED U-Lamp (Fig. C) and reinstall diffuser (if removed).

**STEP 6** - Restore power, installation is complete.

