

LED MINI SNAP & GO™ MODULES

INSTALL INSTRUCTIONS



PLEASE read these instructions carefully before you install and keep them for your reference.

Make electrical and grounded connections in accordance with the National Electric Code and any applicable code. Always turn off power supply before installation.

This product must be installed in accordance with the applicable installation code by a qualified electrician who is familiar with the construction and operation of the product and the hazards involved.

WARNING:

Risk of fire or electric shock. Fixture installation requires knowledge of luminaire electrical systems. If not qualified, do not attempt installation. Contact a qualified electrician.

Risk of fire or electric shock. Suitable for damp locations. Always turn off the power supply before installation, or linking modules together.

Risk of fire or electric shock. Suitable for non-insulated surface and frame.

Do not cover fixture with insulation liner or similar material.

Do not install fixture on unstable, loose or easily breakable surface.

Do not exert force on the surface of the fixture.

Maximum linked wattage of 150W combined.

Maximum total power per input cord should not exceed 250W.

Maximum Linkable Limit		
Length	Wattage	Max. Pieces
2'	10W	15 pcs.
3'	12W	12 pcs.
4'	12W	12 pcs.
4'	15W	10 pcs.
4'	18W	8 pcs.

! WARNING DISCONNECT POWER BEFORE INSTALLING OR SERVICING.

MODULE KIT INCLUDES

- 1 ea. - Mini Snap & Go™ Module
- 2 ea. - Mounting Brackets (per module)
- 1 ea. - Power Cord Connector
- 1 ea. - Linking End-to-End Connector
- 1 ea. - End Cap

ACCESSORIES (Sold Separately)

- Item# 87036 - Set of 2 Magnetic Brackets
- Item# 87038 - 6" Linking Cord Connector
- Item# 87030 - 33" Power Connector for 2 Modules
- Item# 87031 - 33" Power Connector for 3 Modules
- Item# 87032 - 33" Power Connector for 4 Modules

SURFACE MOUNTING



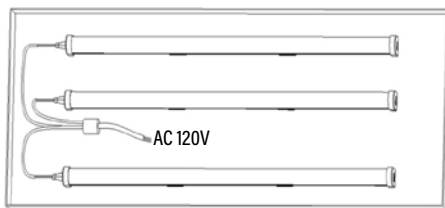
Step 1 - Drill holes into surface.



Step 2 - Attach the brackets to the surface.



Step 3 - Attach the modules to the brackets.



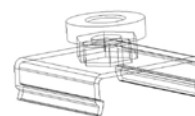
Step 4 - Connect power cord to the light modules and wire to the power supply.

LINKING MODULES

To link modules, follow Surface Mounting or Magnetic Mounting (optional) instructions, where applicable. With power disconnected, Remove end-pin safety plug. Insert firmly Linking Butt Connector or Linking Cord Connector (optional) into module. Attach second linked module onto Linking Connector. This process can be applied if necessary up to the maximum linkable limit (see table above), or maximum total power per Power Cord Connector, whichever comes first. Use of solid end-to-end linking butt connectors also require use of surface or magnetic mounting brackets and straight alignment for proper operation.

MAGNETIC MOUNTING

(Magnetic Brackets Sold Separately)



Magnetic Bracket

Two per module is recommended.



Step 1 - Attach the brackets with magnets to fixture.

Step 2 - Place module onto steel surface.

Step 3 - Connect power cord to the light modules and wire to the power supply.