



LED PREMIUM LIGHTING

---

# COMPASS HIGH BAY

**Superior Life® Premium LED Compass High Bays are our brightest, most efficient Compass High Bays yet!** With up to 150 lumens per watt, our fixtures deliver brilliant, uniform light with long life. The long life design significantly reduces maintenance costs over the fixtures' life, quickly paying for itself. Premium construction ensures consistent performance and hassle-free installation.

**Application:** Ideal for commercial and industrial applications; malls, warehouses, factories, retail stores, athletic facilities, workshops, airports, and large areas.

LED PREMIUM LIGHTING  
**COMPASS HIGH BAY FIXTURES**



**FEATURES**

- High Efficiency, Energy Saving
- Premium Construction - Superior heat dissipation.
- High Performance LEDs - 150 lumens per watt light output.
- 120° Wide Beam Angle - Great for area lighting.
- High Quality Electronic Drivers
- 1 to 1 Replacement for Metal Halide High Bays
- Low heat reduces AC costs
- Wet Location Rated (IP65)
- Dimmable (1-10V, Range 10% - 100%)



With Junction Box  
 (Sold Separately)

WATTS	ITEM#	DESCRIPTION	DLC®	CCT	LUMENS	LPW	BEAM	CRI	MOD	VOLTS	FINISH	LIFE HOURS	TRAD. EQUIV.	CASE
<b>STANDARD HOOK MOUNT</b> (Bracket not included)														
99	90344	COMPASS HIGH BAY/100W/50K/DIMM/120-347V/BLK/PREMIUM	5.0	5000K	14861	150	120°	85	12.6"	120-347	BLACK	50,000	400W	1
150	90346	COMPASS HIGH BAY/150W/50K/DIMM/120-347V/BLK/PREMIUM	5.0	5000K	22351	149	120°	85	12.6"	120-347	BLACK	50,000	400W	1

Accessories on the next page...

Key: SL = Superior Life® / P = Pending / LM = Lumens / TRAD. EQUIV. = Traditional Equivalent

Note: Warranty and Qualifications can vary per item, see technical data sheets (TDS) for specific information. • Visit [www.designlights.org/search](http://www.designlights.org/search) to confirm qualification. • Published lumens on LED products are approximate and may vary slightly. • Specifications are subject to change without notice. • Photos and drawings may not be to scale and are for general reference only.



**PREMIUM QUALITY LIGHTING® - Phone: 800-323-8107**  
 © P.Q.L., Inc. • 2285 Ward Avenue • Simi Valley, CA 93065



[www.PQLighting.com](http://www.PQLighting.com)  
 Rev: 08/25/2022

# LED PREMIUM LIGHTING COMPASS HIGH BAY ACCESSORIES



## ACCESSORIES

Check fixture TDS to confirm compatibility of accessories.

WATTS	ITEM#	DESCRIPTION	CASE
	90332 <sup>1</sup>	JUNCTION BOX ACCESSORY FOR LED COMPASS HIGH BAY	45
	90372 <sup>2</sup>	ADJUSTABLE ANGLE MOUNTING BRACKET FOR COMPASS HIGH BAY	20
	90360	16" ALUMINUM REFLECTOR FOR COMPASS HIGH BAY	20
	90362	16" ACRYLIC REFLECTOR FOR COMPASS HIGH BAY	10
	90363	16" ACRYLIC BOTTOM LENS FOR ACRYLIC REFLECTOR FOR COMPASS HIGH BAY	10
	90370 <sup>3</sup>	MICROWAVE MOTION SENSOR FOR COMPASS HIGH BAY/100-277V 1-10V DIMMING/KIT	10
	90396 <sup>3</sup>	78" WATERPROOF CONNECTOR AND CORD/BLACK 18AWG/300V	50
15	90366	EMERGENCY PACK FOR LED FIXTURE 15W/90 MIN (For use with drivers that are 200W or less.)	5
40	55695	EMERGENCY PACK FOR LED COMPASS 40W/90 MIN - T20C (For use with 0-10V dimmable drivers that are 300W or less.)	6

<sup>1</sup>Junction box is not required if a watertight connection is not needed, or if you are using a waterproof connector and cord (#90396<sup>3</sup>).

<sup>2</sup>The Adjustable Angle Mounting Bracket (#90372) is only compatible without the use of the junction box.

<sup>3</sup>Motion Sensor (#90370), and Waterproof Connector (#90396) are compatible as long as the input voltage does not exceed the rating of the accessory.



90332<sup>1</sup>



90372<sup>2</sup>

For 100W-300W Models Only.



90360



90362



90363

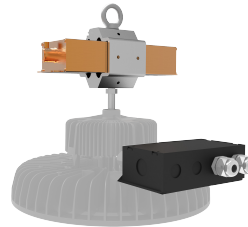


90396<sup>3</sup>



Fixture not included. For reference only.

90370<sup>3</sup>



90366

For use with drivers that are 200W or less.



55695

For use with 0-10V dimmable drivers that are 300W or less.

Key: P = Pending / LPW = Lumens Per Watt / TRAD. EQUIV. = Traditional Equivalent

Note: Warranty and Qualifications can vary per item, see technical data sheets (TDS) for specific information. • Specifications are subject to change without notice. • Photos and drawings may not be to scale and are for general reference only.



PREMIUM QUALITY LIGHTING® • Phone: 800-323-8107  
© P.Q.L., Inc. • 2285 Ward Avenue • Simi Valley, CA 93065

www.PQLighting.com  
Rev: 08/25/2022