



# LED LINEAR HYBRID T8

## DIRECT REPLACEMENT & BY-PASS INSTALLATION INSTRUCTIONS



### TWO OPERATION MODES:

#### MODE 1 / DIRECT REPLACEMENT

- Plug & Go
- Compatible with instant start electronic ballasts

#### MODE 2 / BY PASS

- Direct connect with the mains: 120-277V 50/60 Hz

### SAFETY PRECAUTIONS



#### MODE 1 / DIRECT REPLACEMENT

- WARNING: Risk of shock. Disconnect power before installation.
- LED T8 lamp for use only with products described and installed in accordance with product specifications. LED T8 lamp to be operated with fluorescent electronic ballast.
- WARNING: RISK OF FIRE , USE ONLY IN PLACE OF FLUORESCENT LAMPS SPECIFIED ON LABEL. RISK OF ELECTRICAL SHOCK, SUITABLE FOR DAMP LOCATIONS.

#### MODE 2 / BY PASS

- Product should be installed by a qualified electrician.
- Switch the power supply off before commencing work, make sure correct connection before turning power back on.
- Do not apply uncertified LED driver with the product.
- NOT FOR EMERGENCY LIGHTING
- WARNING: RISK OF FIRE , USE ONLY IN PLACE OF FLUORESCENT LAMPS SPECIFIED ON LABEL. RISK OF ELECTRICAL SHOCK, SUITABLE FOR DAMP LOCATIONS.

*This device complies with Part 15 of the FCC Rules. Operation is subject to the following two conditions: 1.) this device may not cause harmful interference, and 2.) this device must accept any interference received, including interference that may cause undesired operation.*

### INSTALL INSTRUCTIONS: MODE 1 • DIRECT REPLACEMENT

**WARNING:** DO NOT INSTALL THIS LAMP IN A PRE-HEAT LUMINAIRE.

THIS LAMP ONLY OPERATES ON ELECTRONIC BALLASTS. IF LAMP DOES NOT LIGHT WHEN LUMINAIRE IS ENERGIZED, REMOVE LAMP FROM LUMINAIRE AND CONTACT MANUFACTURER OR QUALIFIED ELECTRICIAN.

CAUTION RISK OF FIRE - IF LAMP OF LUMINAIRE EXHIBITS UNDESIRABLE OPERATION (BUZZING, FLICKERING, ETC.) IMMEDIATELY TURN OFF POWER, REMOVE LAMP FROM LUMINAIRE AND CONTACT MANUFACTURER.

#### SAFETY INFORMATION:

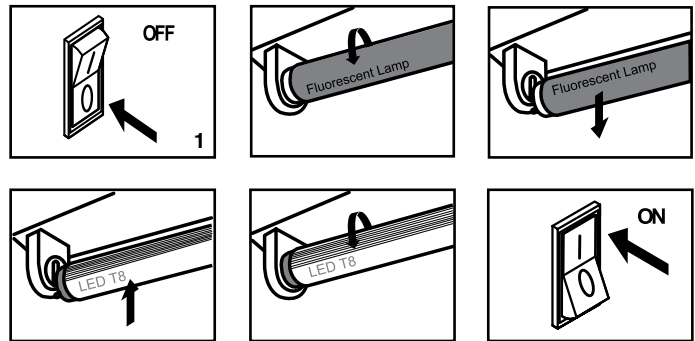
1. Check the lamp before installation, if there is any damage caused during transportation , do not install.
2. Maintenance should be carried out by technical person only.
3. Do not stare at the light source with bare eyes for a long time, or beam into other's eyes.
4. Do not place and objects on the lamp.
5. Keep lamp away from flame or high temperature objects.
6. Only for indoor use.
7. Only replace with the same type of LED tube! Risk of electrical shock!
8. If the glass lamp is broken, the lamp must be disposed of immediately.

#### MAINTENANCE NOTES:

1. Disconnect lamp from power supply before maintenance.
2. Clean luminaire with dry cloth.
3. Do not clean the lamp with corrosive chemicals.

### INSTALL INSTRUCTIONS: MODE 1 • DIRECT REPLACEMENT

1. Turn Power off
2. Remove lens or diffuser (if applicable)
3. Remove existing fluorescent lamp from the luminaire.
4. Bring LED lamp to luminaire and insert lamp pins into luminaire lamp holders
5. Rotate LED lamp until lamp locks in place. Ensure that the LED lamp from points face away from the back of the luminaire.
6. Replace lens or diffuser back in place (if applicable)
7. Turn Power on



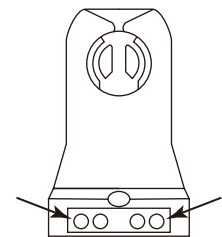
**Note:** Install LED T8 Replacement lamp, one for each fluorescent lamp removed.

Please use jumpered or shunted sockets, because in Direct Replacement Mode, this lamp can only be compatible with instant start electronic ballast, and the bi-pin on the lamp base are not electrical connected internally.

### INSTALL INSTRUCTIONS - MODE 2 • BY PASS

**CAUTION: Make sure socket is non-shunted for L, N input terminal (As shown right)**

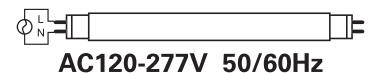
**DO NOT** install this product in a fixture that uses shunted lamp holders (found in all fixtures with instant start ballasts). Installing this product with shunted lamp holders will cause a short circuit condition in the lamp holder and create a fire or shock hazard. Before continuing, determine if the lamp holders currently installed in the fixture are shunted or non-shunted. If the current lamp holders are shunted, cut the wires away from the lamp holders and install non-shunted lamp holders, making new connections with the lead wires at terminals indicated here:



Non-shunted lampholder

**NOTE:** If using existing non-shunted lamp holders, installer should not disconnect lead wires from the lamp holders and make new connections at terminals. Instead, cut lead wires away from lamp holder and make new connection to lead wires using approved connectors.

**CAUTION: The terminal with label shown to the right indicated that this terminal should be connected with mains**



**WARNING:** Risk of fire or electric shock - Retrofit kit installation requires knowledge of electrical systems. If not qualified, do not attempt installation. Contact a qualified electrician.

Install this kit only in the luminaires that have the construction features and dimensions shown in the drawings.

Do not make or alter any open holes in an enclosure of wiring or electrical components during kit installation.

To prevent wiring damage or abrasion, do not expose wiring to edges of sheet metal or other sharp objects.

**WARNING:** To avoid potential fire or shock hazard, do not use this retrofit kit in luminaires employing shunted bi-pin holders. Note: Shunted lamp holders are found only in fluorescent luminaires with instant-start ballasts. Instant start ballasts can be identified by the words "Instant Start" or "I.S." marked on the ballast. This designation may be in the form of a statement pertaining to the ballast itself, or may be combined with the marking for the lamps with which the ballast is intended to be used, for example F40T12/IS. For more information, contact the LED luminaire retrofit kit manufacturer.

**WARNING: RISK OF FIRE OR ELECTRIC SHOCK. DO NOT ALTER, RELOCATE, OR REMOVE WIRING, LAMP HOLDERS, POWER SUPPLY, OR ANY OTHER ELECTRICAL COMPONENT.**

THE RETROFIT ASSEMBLY IS ACCEPTED AS A COMPONENT OF A LUMINAIRE WHERE THE SUITABILITY OF COMBINATION SHALL BE DETERMINED BY UL OR AUTHORITIES HAVING JURISDICTION.



PREMIUM QUALITY LIGHTING

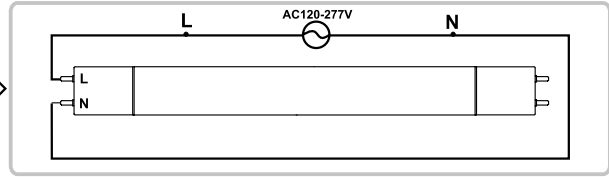
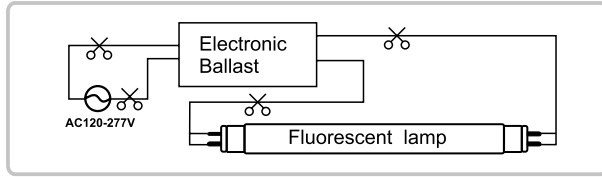
# LED LINEAR HYBRID T8

DIRECT REPLACEMENT & BY-PASS  
INSTALLATION INSTRUCTIONS

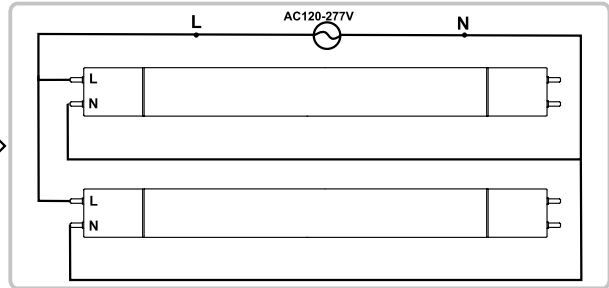
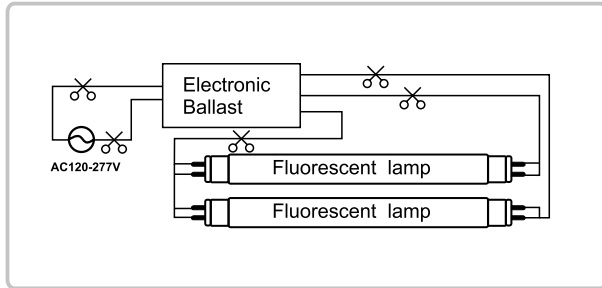


## INSTALL INSTRUCTIONS - Electronic Ballast

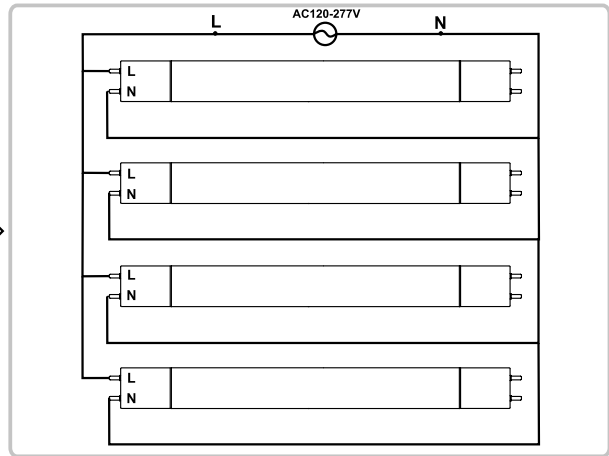
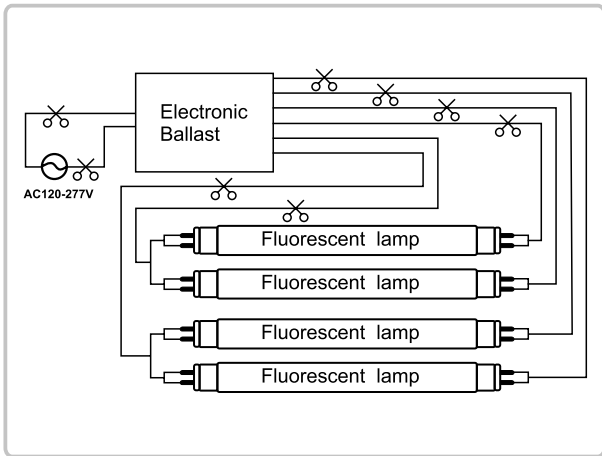
### RETROFIT FIXTURES WITH ONE LAMP



### RETROFIT FIXTURES WITH TWO LAMPS



### RETROFIT FIXTURES WITH FOUR LAMPS



## INSTALL INSTRUCTIONS - Magnetic Ballast

