



Traditional vs. LED Lighting

270W (5ea. T5/HO)

185W



**Estimated Annual Energy Saved per
LED Fixture: \$119.14**



Traditional vs. LED Lighting

270W (5ea. T5/HO)

185W



**Estimated Annual Energy Saved per
LED Fixture: \$119.14**

**BEFORE****AFTER**



Traditional vs. LED Lighting

1000W HID

185W



Estimated Annual Energy Saved: \$28,557.60



NEW INSTALLATION

Traditional vs. LED Lighting

1000W HID

300W



**Estimated Annual Energy Saved per
LED Fixture: \$490.56**



Traditional vs. LED Lighting

458W HID

150W



Job Summary: 274 fixtures replaced (Savings per fixture: \$269.07)

Estimated Annual Energy Saved: \$73,724.85



Traditional vs. LED Lighting

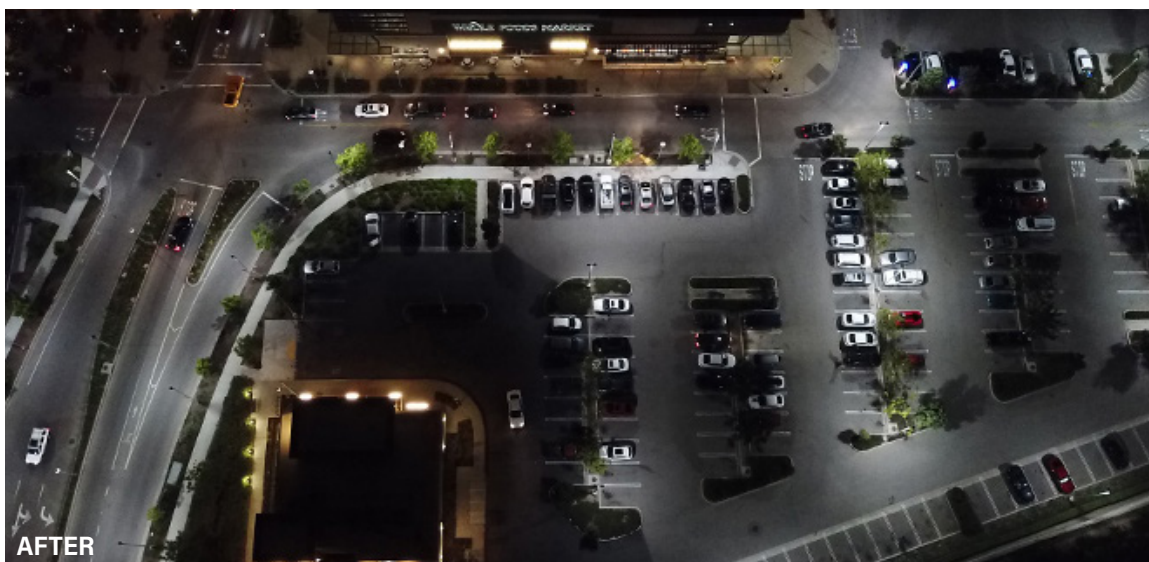
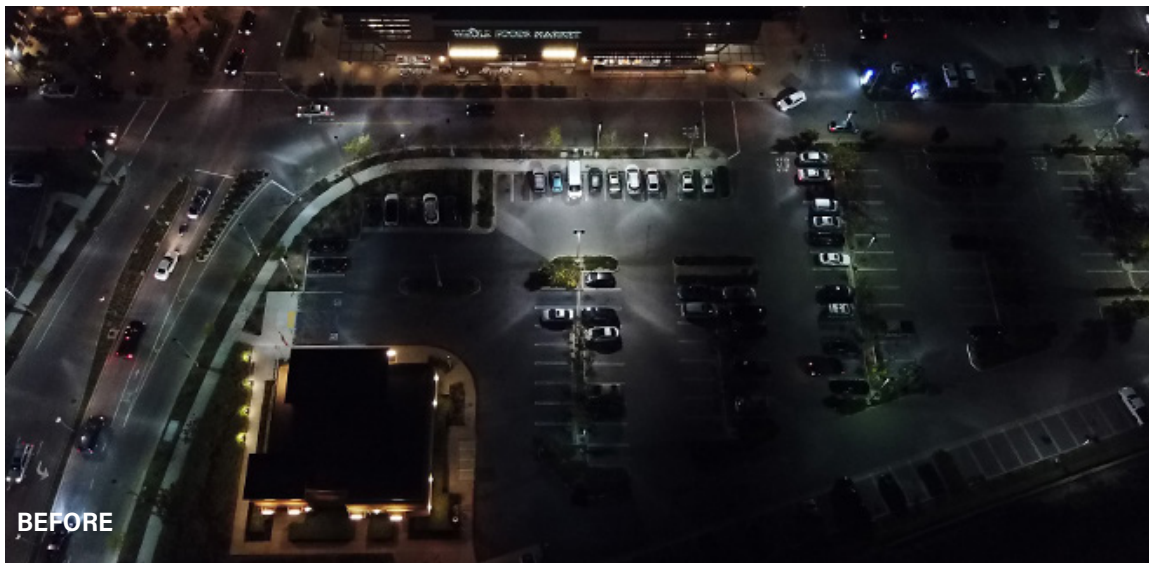
458W HID

150W



Job Summary: 274 fixtures replaced (Savings per fixture: \$269.07)

Estimated Annual Energy Saved: \$73,724.85



Traditional vs. LED Lighting

458W HID

150W



Job Summary: 274 fixtures replaced (Savings per fixture: \$269.07)

Estimated Annual Energy Saved: \$73,724.85



Traditional vs. LED Lighting

400W HID

150W



Job Summary: 80 fixtures replaced (Savings per fixture: \$146.00)

Estimated Annual Energy Saved: \$11,680.00