



**PQL**  
PREMIUM QUALITY LIGHTING®  
M20 ARCHITECTURAL

# NETWORK LIGHTING CONTROL APP INSTRUCTION MANUAL



# TABLE OF CONTENT

<b>1. INTRODUCTION</b> .....	1	<b>5. ENERGY MONITORING</b> .....	20
<b>2. CAUTION</b> .....	2	5.1 General Description .....	20
<b>3. PREPARATION</b> .....	3	5.2 Devices for Energy Monitoring .....	20
3.1 Download the App .....	3	5.2.1 Add Gateway .....	21
3.2 App Navigation .....	3	5.2.2 Set the Wattage of Fixtures .....	22
<b>4.COMMISSIONING</b> .....	5	5.2.3 Collect Fixtures .....	23
4.1 Preparation work .....	5	5.3 Get the Data from Website .....	23
4.2 Create Zones, Add Sensors, Manage groups and Scenes .....	6	<b>6. QR CODES</b> .....	25
4.2.1 Zones .....	6	6.1 To Scan the Code .....	25
4.2.1.1 Creating Zones .....	6	6.2 To Save the Code .....	25
4.2.1.2 Rename Zones .....	6	6.3 To Share the Code .....	26
4.2.1.3 Deleting Zones .....	7	6.4 To Synchronize Data to the Zones .....	26
4.2.2 Devices .....	7	6.4.1 Upload the Data to Cloud .....	26
4.2.2.1 Add Devices to the App .....	7	6.4.2 Download the Data to Cloud .....	26
4.2.2.2 To Name or Rename Devices.....	9	6.4.3 Remote Commissioning Without Gateway .....	27
4.2.2.3 Dimming and Color Tuning .....	9	<b>7. ADDITIONAL SETTINGS</b> .....	27
4.2.2.4 Quick Settings for All Devices .....	10	7.1 Device Information .....	27
4.2.2.5 To Delete Devices .....	10	7.2 Light Fade to Dim/Off Rate .....	28
4.2.2.6 Sensor Settings .....	10	7.3 Human Centric Lighting (HCL) .....	28
4.2.3 Groups .....	13	7.4 Test Mode .....	28
4.2.3.1 Add or Remove Fixturess in a Group..	13	<b>8. RESTORING FACTORY SETTINGS</b> .....	29
4.2.3.2 Rename the Group .....	14	8.1 Restore by Deleting Lights Online .....	29
4.2.3.2 Linkage and Parameter Settings.....	14	8.2 Restore by RC-100 .....	29
4.2.4 Scenes .....	15	8.3 Restore by Reset Button .....	30
4.2.5 Switch .....	16	8.4 Restore by Magnets .....	30
4.2.5.1 Add a Switch.....	16	8.5 Restore by Power Reset (Not Recommended) .....	30
4.2.5.2 Rename and Delete the Switch .....	16	<b>9. FACTORY DEFAULT SETTING</b> .....	30
4.2.5.3 Associate Devices or Groups to the Switches .....	17		
4.2.6 Schedule (Timer) .....	18		
4.2.7 Devices for Emergency Kit .....	19		

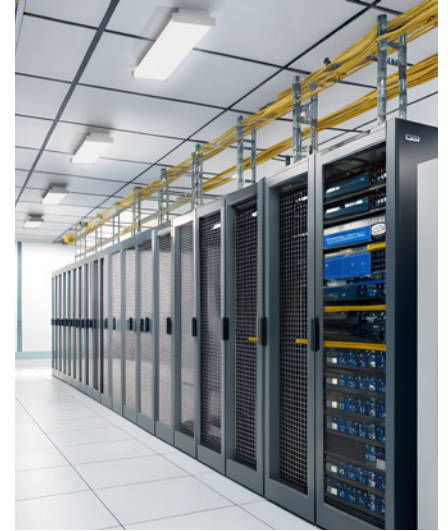
# 1

## INTRODUCTION

PQL Network Lighting Controls (NLC) can manage luminaires individually or in groups, using Bluetooth® Low Energy Mesh 4.2 and 5.0 protocols. This advanced wireless control system is operated through the PQL NLC App, in combination with sensors, wall switches, power packs, and controller nodes. System components are easily commissioned via the PQL NLC App on a mobile device, with no gateway required. The mesh network supports wireless communication up to 100 feet or more between devices, and commissioning does not require internet access.

The PQL NLC App uses data encryption to secure the mesh network. Configuration settings for each device are stored in encrypted QR codes, and network devices cannot be accessed without the corresponding QR code. The platform is UL 1376 verified for security. Additionally, the PQL platform is listed under DLC's Networked Lighting Controls (NLC5).

Luminaire-level lighting control (LLLC) refers to a system in which each light fixture is equipped with its own control device or integrated control system, allowing independent management of every fixture. LLLC luminaires can detect human movement and ambient light levels, automatically turning lights on/off or dimming them to enhance comfort, safety, and energy efficiency.



# 2 CAUTION

1



Do not use more than one mobile device during the commissioning process. Using multiple devices may cause unexpected issues, such as data corruption or duplicate light addresses.

2

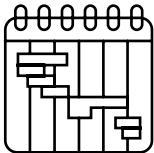


Ensure commissioning data is synchronized to the cloud before sharing the QR code. Access rights to the zone can be granted to other users by sharing the QR code. Make sure the zone data has been uploaded to the cloud before sharing (an internet connection is required).

When uploading or downloading data, a stable internet connection is required to save or update the commissioning data linked to the QR code. You may share the QR code with other users immediately after commissioning is complete.

**DO NOT** share the QR code before successfully syncing the data.

3



Before adding sensors, it's best to have a project plan. When adding devices, start by adding the nearest 5-10 devices. Then name the devices using the positioning function. This approach makes it faster and easier to add all the devices you need.

4



Save and name the zone QR code in the project file on your computer.

5



After finishing commissioning or changing the parameters, you must upload the data to the cloud.

# 3 PREPARATION

## 3.1 Download the App

Scan the QR code to download the PQL App.

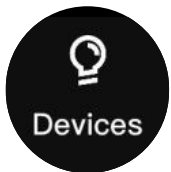
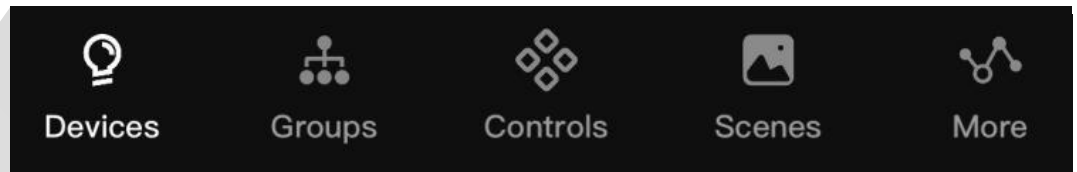
The app works on most Android smartphones, though some models may not be supported due to hardware or firmware limits. It requires access to your network and Bluetooth, please approve these requests. The app will not collect your personal data. When prompted, allow access to photos so QR codes can be automatically saved to your album.

PQL regularly updates the app with new features and bug fixes. Enable auto-update to always have the latest version.



## 3.2 App Navigation

The PQL App has five tabs in the bottom menu for easy control of your lights:



**Devices**

**Devices**  
Displays all fixture sensors connected to the app and allows the user to view and control individual lights.



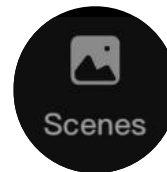
**Groups**

**Groups**  
Enables user to adjust parameters for multiple devices simultaneously. Each Zone can have up to 16 groups.



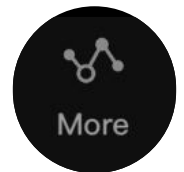
**Controls**

**Controls**  
Shows all gateways, switches, and other PQL BLE devices (except sensors) connected to the app.



**Scenes**

**Scenes**  
Allows user to manage scenes according to their needs. Each Zone can have up to 16 scenes.



**More**

**More**  
Provides access to Zones, Schedules, Device information, and additional functions.



## Light Icons

Every light connected to the app is listed on the **Devices** page. Each light can display different icons to indicate its status:



**A. OFF** – Light output is off.



**B. ON** – Light output is on.



**C. Offline** – Device is most likely either not getting power or is out of range of the mesh network.



**D. Tunable Device** – The light currently used by the phone/tablet to connect to the mesh network.



**E. All Lights** – A default system-wide on/off switch that toggles all lights in the region between auto-on and manual-off.

Use the **More** page to access additional settings and features in the app.

### Zone

Create, edit, and delete zones.  
Generate and share QR codes.

### Schedule

Set a schedule for individual devices, groups, or scenes.

### Data Synchronization

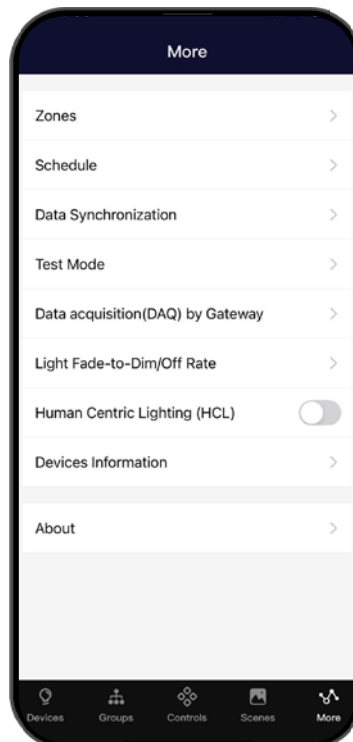
Upload data to the cloud. Download data locally.

### Test Mode

Test settings for motion sensors.

### Data Acquisition (DAQ) by Gateway

Add, edit, and delete gateways.  
Set the data acquisition interval time remotely.



### Light Fade-to-Dim/Off Rate

Set the delay before lights fade to dim or turn off.

### Human Centric Lighting (HCL)

Enable or disable HCL.

### Devices Information

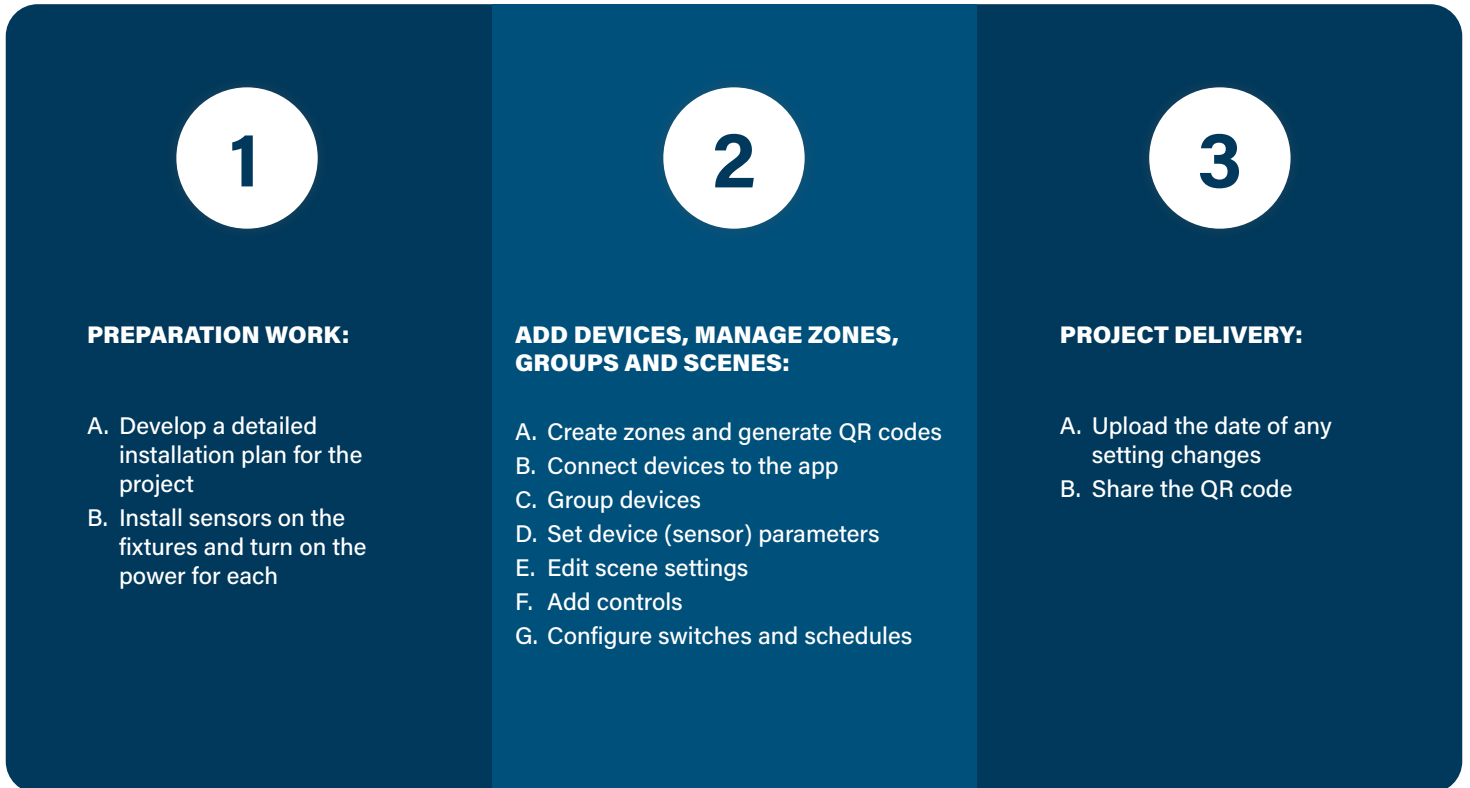
View information on all connected lights, groups, and scenes in a zone.

### About

Displays the current app version.

# 4 COMMISSIONING

## Recommended Commissioning Procedure (Typical)



### 4.1 Preparation Work

For each project site, it is recommended to prepare a design script in advance, including the following:

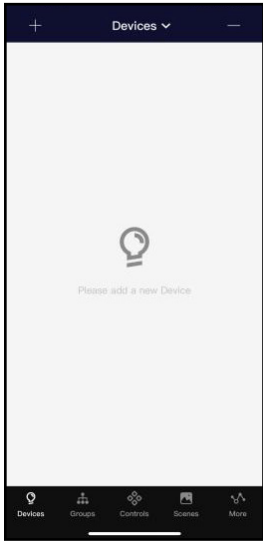
1. Site plan and a description of the actual functional purpose of each area.
2. Model number, quantity, parameters, and location of each fixture.
3. Zone divisions should be based on real functional purposes. The number of fixtures and switches in a single zone should not exceed 100. Ensure there are no objects (such as solid walls, large metal objects, etc.) that could block wireless signals. The length, width, and area should remain within wireless coverage limits—typically, the building's length and width should not exceed 50 meters, and the area should not exceed 1000 square meters.
4. For each zone, plan the number and names of required groups, the number and names of fixture scenes, and the approximate fixture scheme for each scene.
5. Plan the number and models of devices required for each zone.

## 4.2 Create Zones, Add Sensors, Manage Groups and Scenes

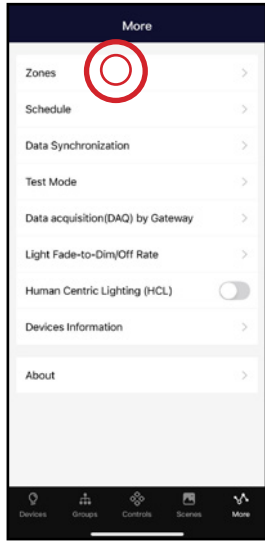
### 4.2.1 Zone

It is recommended to create QR codes for all zones and predefine all groups, scenes, and their names before commissioning to reduce on-site work. A QR code represents a zone and all the lights, switches, and other devices within that zone. For more information on scanning, creating, and sharing QR codes, see the QR Code chapter on page 26.

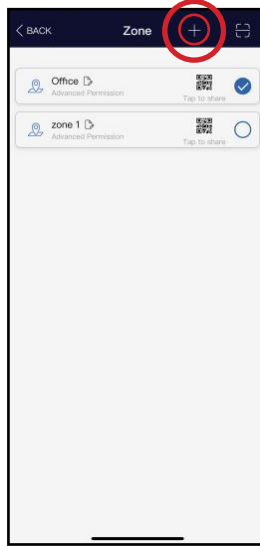
#### 4.2.1.1 Creating Zones



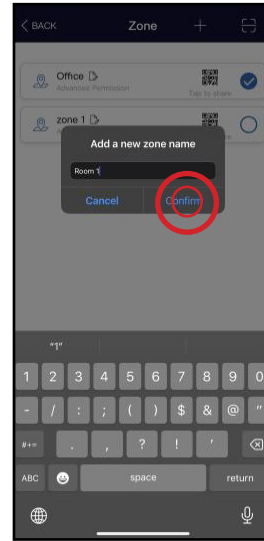
1. Open the PQL app and click **"More."**



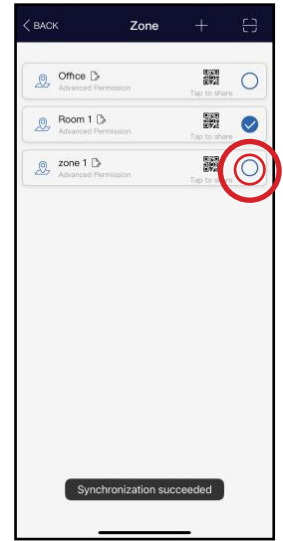
2. Click **"Zones."**



3. Click **"+"** to create a new zone.

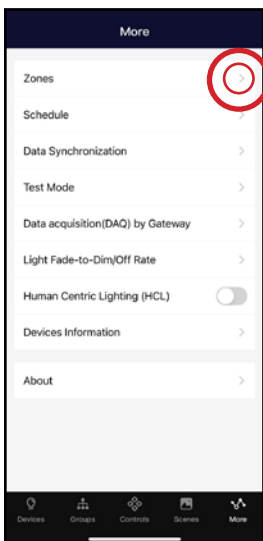


4. Type the name you want for the zone and click **"Confirm."**

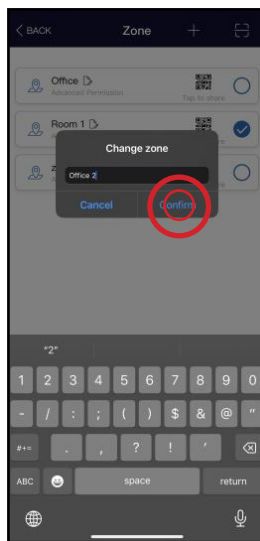


5. All zones appear in the **"Zones"** list. You can tap to share a zone and switch between them by clicking the circle next to each.

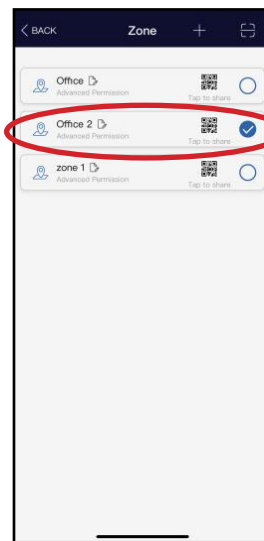
#### 4.2.1.2 Rename Zones



1. On the **"Zones"** page, press the edit button to the right of the zone name.

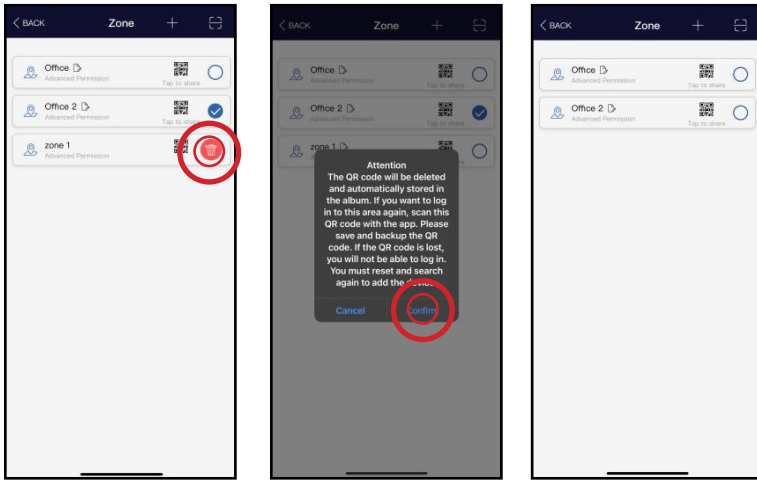


2. Enter your preferred zone name when prompted.  
3. Confirm the name.



4. The new zone name should now be displayed in the Zone list.

### 4.2.1.3 Deleting Zones



1. Decide the zone you want to delete, then hold down the select button. The delete button will appear on the right.
2. Press the red Delete button.
3. Confirm by pressing **"Confirm"**

**Note:**

- The zone's QR code will be automatically saved to your album to prevent accidental deletion.
- You cannot delete the zone you are currently in.

### 4.2.2 Devices

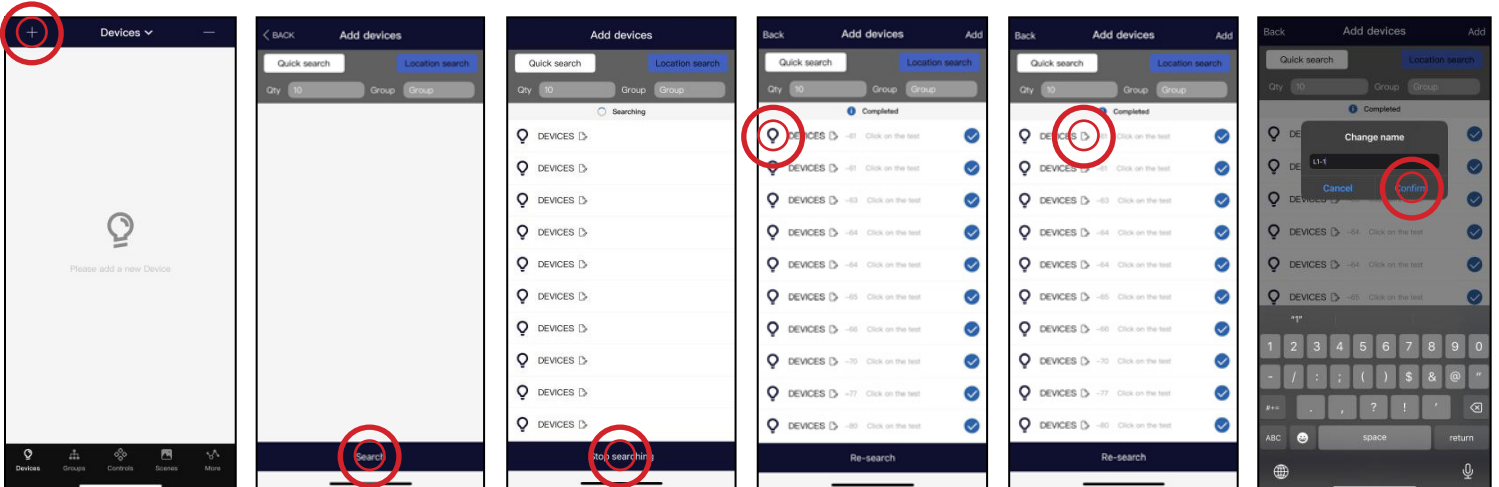
The **Devices** page is the first page you see upon opening the app. It is the primary page for controlling individual lights. Add devices by zone, and do not turn on more than 100 lights at the same time. To prevent wireless communication interference, turn off any nearby lights not included in the current zone.


#### 4.2.2.1 Add Devices to the App

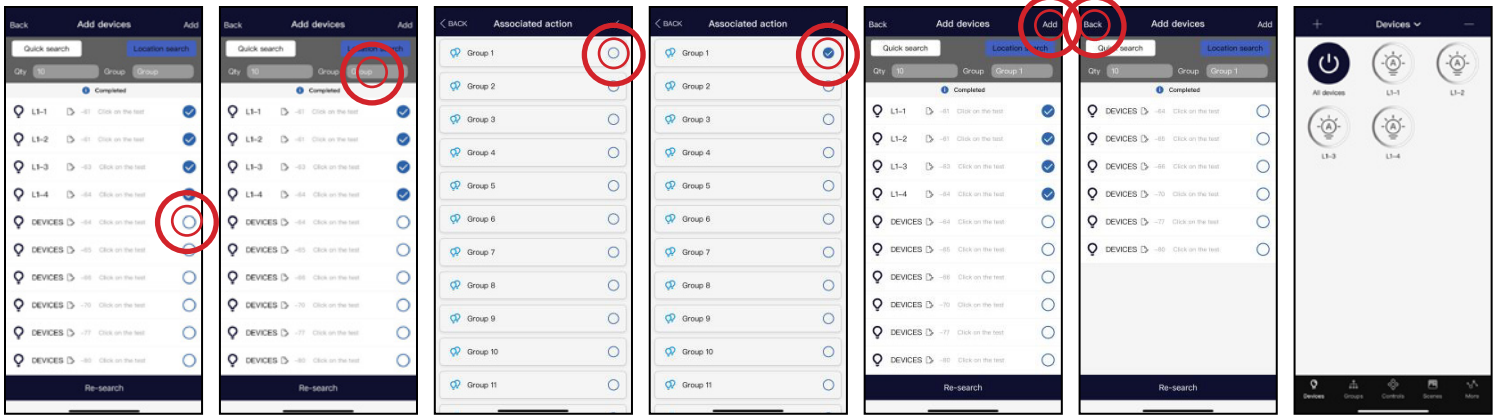
There are two ways to search: **Quick Search** and **Location Search**.

##### A. Location Search

You can add devices to a group while adding them.



1. Open the **"Devices"** screen and click the **"+"** in the upper-left corner.
2. Press **"Search"**. The app will scan and list nearby fixtures that can be added (default quantity: 10; search mode: location). Click **"Stop Searching"**, the nearest 10 devices will be sorted by Bluetooth signal strength.
3. Identify devices in a room by pressing the icons on the left to turn them on or off.
4. Click  to rename a fixture.
5. Enter the new name and click **"Confirm"**.

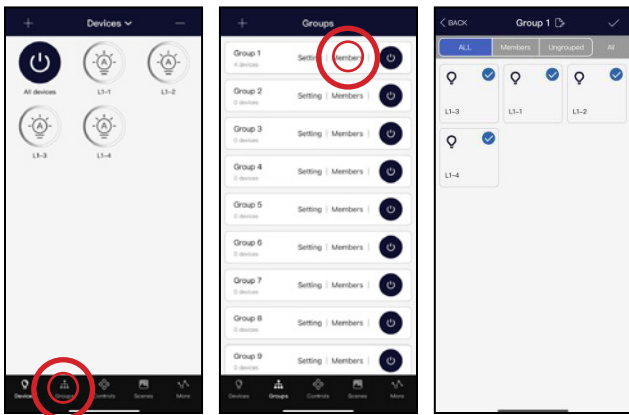


6. Click the checkbox to select or deselect a fixture.

7. After choosing the devices you want, select the group you want to assign them to.

8. Press "Add."

9. After successfully adding, click "Back" to return to the "Devices" screen and verify that the devices were added.

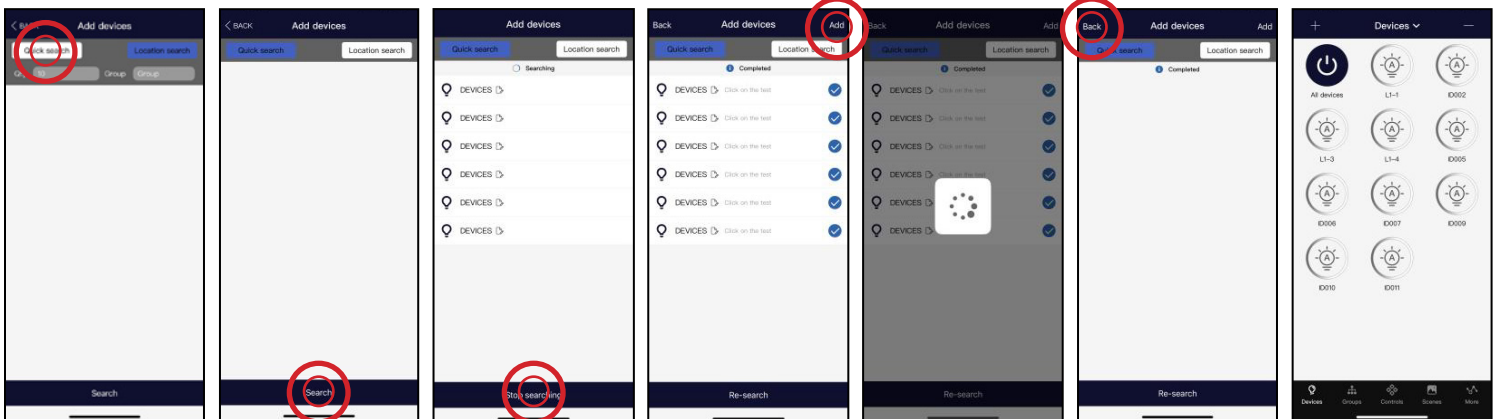


10. Click "Group."

11. Then click "Members." You will see that 4 devices are already in Group 1.

**Tip:**  
Commissioning performance may degrade if more than 100 devices are powered on at the same site. Please power off some devices before continuing.

## B. Quick Search

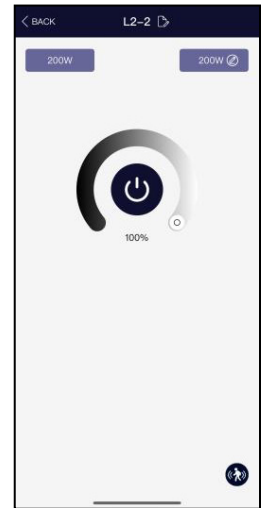
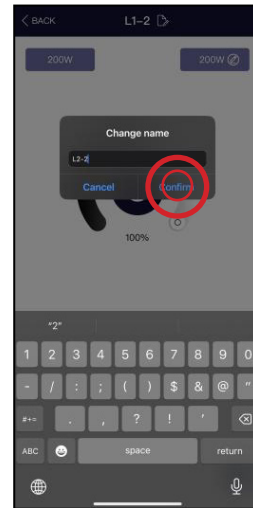
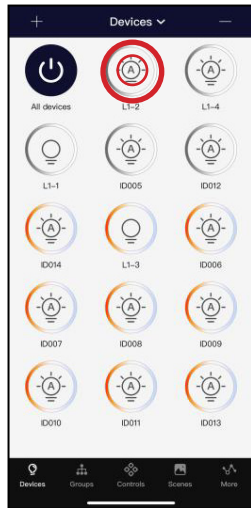
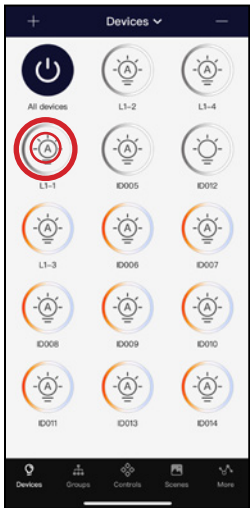



1. Click "Quick Search," then press "Search." The app will search for all Bluetooth devices in the zone (up to 100). In this mode, the Bluetooth signal will not be displayed.

2. Click "Stop Searching."

3. Click "Add" to quickly add all devices in the list.

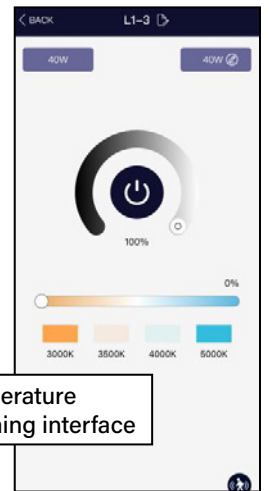
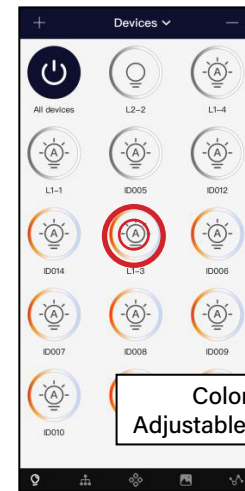
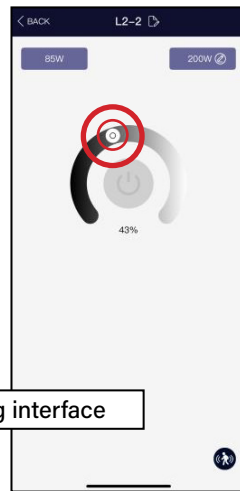
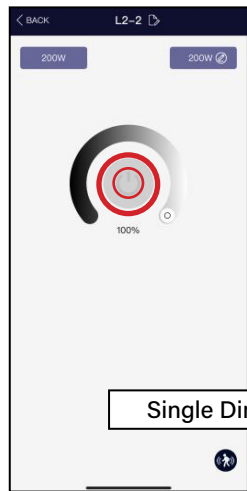
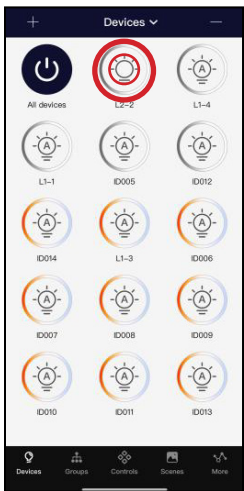
### 4.2.2.2 To Name or Rename Devices



1. On the device page, click the device icon to quickly turn it on or off for easy search and positioning.
2. Hold down the device icon to enter the dimming and management interface.
3. Click  icon to name the device.
4. Type the device name and click **"Confirm"** to save it.
5. The device has been successfully renamed.

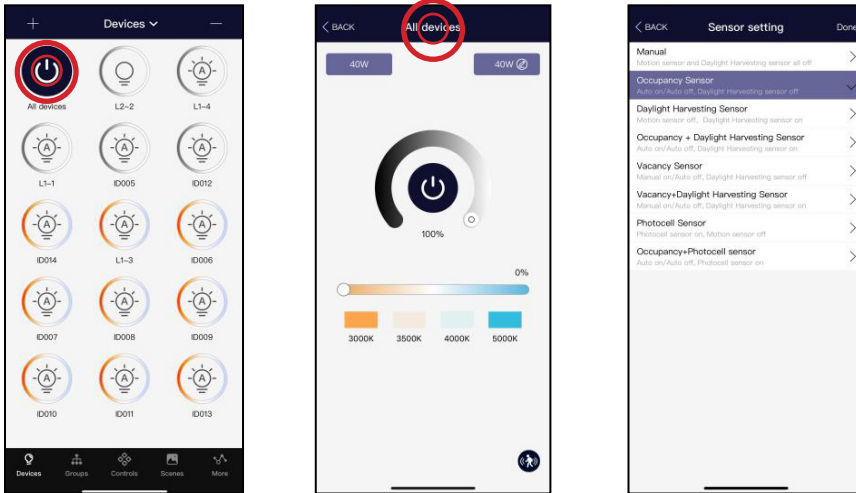
### 4.2.2.3 Dimming and Color Tuning

Below are examples of the Device Dimming pages for mono-dimmable and CCT dimming:



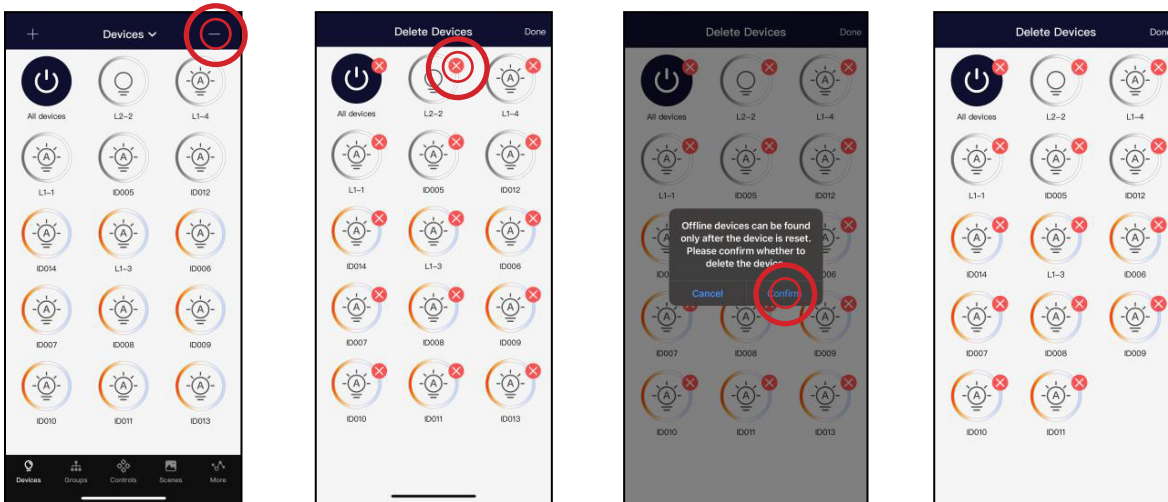
1. Hold down the device icon to enter the dimming and management interface.
2. Different types of devices have different dimming interfaces. Please click and slide the corresponding dimming control.


## 4.2.2.4 Quick Settings for All Devices



1. Hold down the “**All Devices**” icon to enter the dimming and management interface.
2. Here, you can set the parameters for all the devices you’ve added.

## 4.2.2.5 To Delete Devices



1. Click “-” on the upper right Devices screen.
2. Click  to the right of device you don't need, then click “**Confirm**.”
3. Note: This method is only effective for online fixtures. If the fixture is not paired, a power reset is required. See page 29.

## 4.2.2.6 Sensor Settings

### 4.2.2.6.1 Brief introduction

For fixtures with sensors, the sensors can detect human movement and changes in ambient light, and then automatically turn the lights on or off, or adjust brightness as needed. This ensures comfort, health, and energy efficiency.

Before setting the sensor parameters, select the sensor mode according to your needs:

*Modes on next page...*

**Mode 1: Manual** – Motion sensor and daylight harvesting sensor are both **OFF**.

**Mode 2: Occupancy Sensor** – Auto on/auto **OFF**; daylight harvesting sensor **OFF**.

**Mode 3: Daylight Harvesting Sensor** – Motion sensor **OFF**; daylight sensor **ON**.

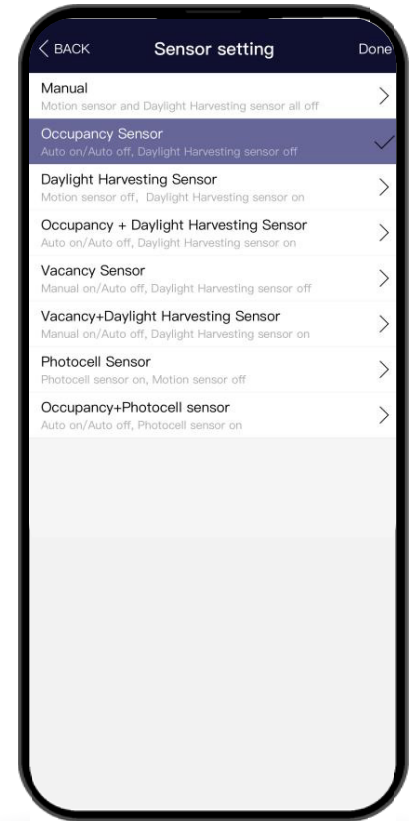
**Mode 4: Occupancy + Daylight Harvesting Sensor** – Auto on/auto **OFF**; daylight harvesting sensor **ON**.

**Mode 5: Vacancy Sensor** – Manual on/auto **OFF**; daylight harvesting sensor **OFF**.

**Mode 6: Vacancy + Daylight Harvesting Sensor** – Manual on/auto **OFF**; daylight harvesting sensor **ON**.

**Mode 7: Photocell Sensor** – Photocell sensor **ON**; motion sensor **OFF**.

**Mode 8: Occupancy + Photocell Sensor** – Auto on/auto off; photocell sensor **ON**.



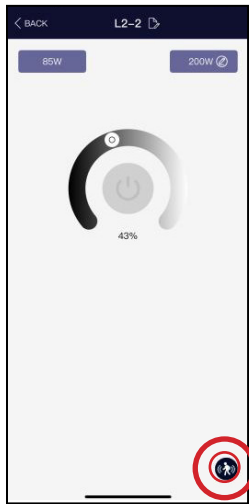
**Special Parameters for Fixtures with Sensors:**


1. **Brightness:** Fixture brightness when motion is detected.
2. **1st Time Delay (Hold Time):** Time for the sensor to turn off after the last motion signal is received.
3. **2nd Time Delay (Stand-by Time):** Duration of the dimming function after the fixture enters dimming mode.
4. **Dimming Level:** Reduces fixture brightness to 10%, 20%, or 30% for energy saving.
5. **Motion Sensor Sensitivity:** Detection distance of the sensor; options: high, medium, low.
6. **Linkage:** If a fixture is not triggered by motion but another fixture in the same group senses movement, the fixture will turn on at a linked brightness level, proportionate to its normal working brightness.

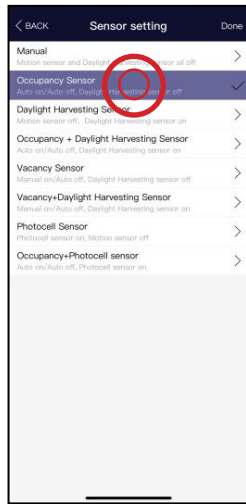
**RECOMMENDED PARAMETERS SETTING BY SPACE TYPE  
(REFER TO THE PROJECT CONTROLS SEQUENCE OF OPERATIONS)**

Zone	1st Time Delay (Minutes)	2nd Time Delay (Minutes)	Dimming Level (%)	Linkage Level (%)	Scenes	Wall Switches
Open Office Area	30 min.	1 min.	50%	50%	No Scene	Button programmed to "ALL OFF" for quickly turning off lights when leaving the office.
Meeting Room	30 min.	1 min.	80%	80%	Configure PPT/ Lecture Scenes	Associate PPT/lecture scenes with the SCENE button on the wall switch.
Classroom	35 min.	5 min.	80%	80%	Configure PPT/ Lecture Scenes	Associate PPT/lecture scenes with the SCENE button on the wall switch.
Storage Room	10 min.	1 min.	30%	80%	No Scene	No switch
Corridor	10 min.	1-to-infinity min.	30%	50%	No Scene	No switch

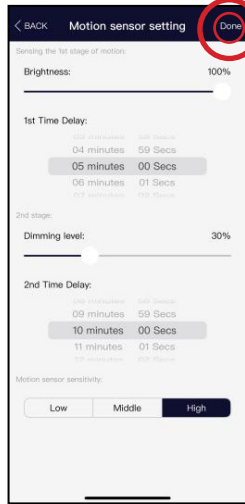
## Sensor Settings



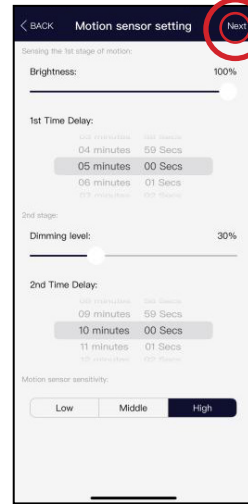
1. Click the  in the lower-right corner to set the sensor parameters.



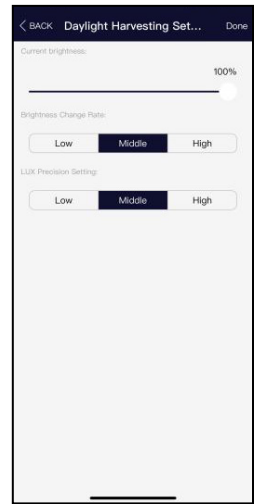
2. Select the sensor mode.



3. After setting the parameters, click the “Done” button to save the settings.



4. If Daylight Harvesting mode is selected, click “Next” after setting the sensor parameters to configure daylight harvesting settings.



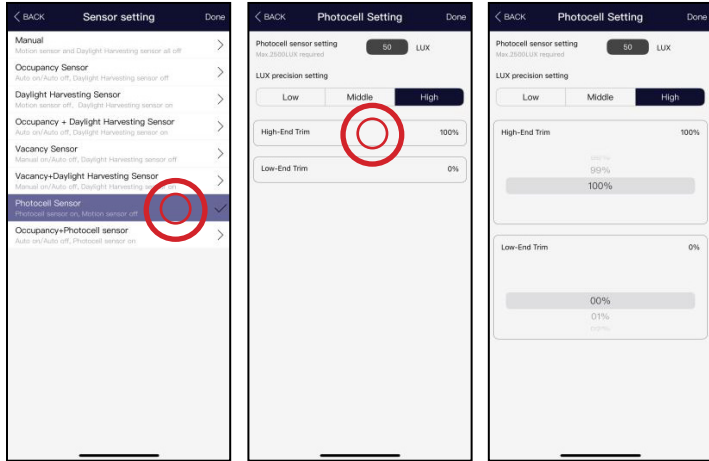
### 4.2.2.6.2 Daylight Harvesting Settings



5. Choose the current brightness of the fixture as the memory lux value for the daylight harvesting function. When ambient light decreases, the fixture brightness will increase. When ambient light increases, the fixture brightness will decrease to maintain the set lux level.
6. Brightness Change Rate determines how quickly the luminaire adjusts its brightness in response to changes in ambient light. There are three modes: Low, Middle, and High.
7. LUX Precision Setting allows you to select the accuracy of lux detection when the daylight harvesting function is active. There are three modes: Low, Middle, and High.

### 4.2.2.6.3 Outdoor Photocell

#### Photocell-Only Setting Interface

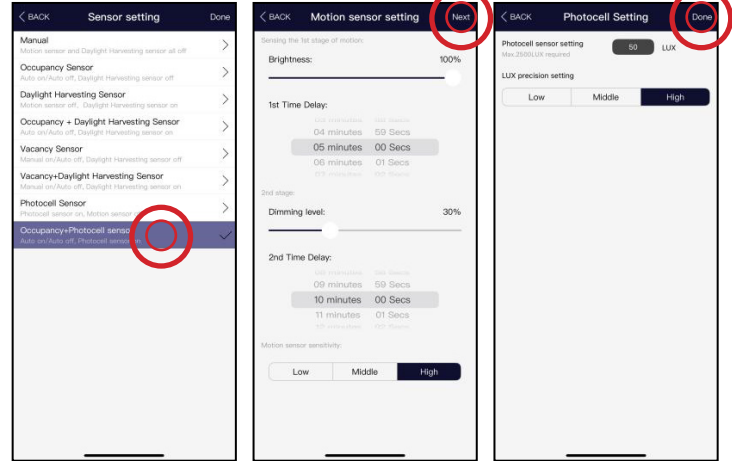


In the photocell interface, you can set the lux level and choose the lux precision (Low, Middle, High), as well as High-End Trim and Low-End Trim.

- Low = 15%
- Middle = 10%
- High = 5%

For example, with the settings shown in the picture: if you set 50 lux, the fixture will automatically turn 100% on when the ambient lux drops below 47, and will turn off when the lux exceeds 53.

#### Photocell with Occupancy Sensor Setting Interface



In the photocell with OCC mode, after setting the sensor's regular parameters, click "Next" to configure the lux and lux precision.

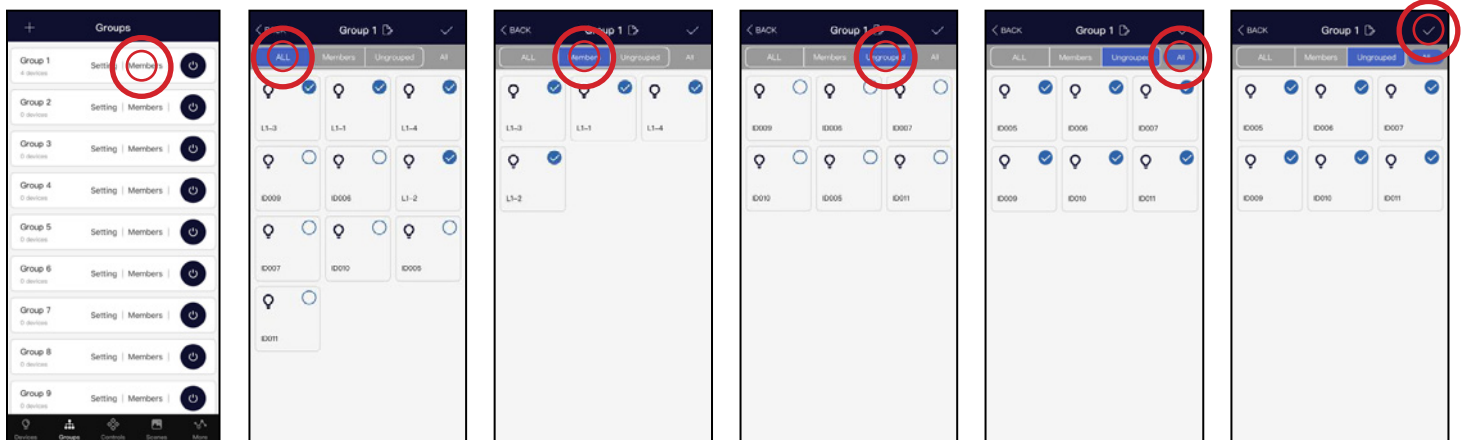
For example, with the settings in the picture:

- If the lux drops below 47 and motion is detected, the fixture will turn 100% on.
- If no motion is detected for 5 minutes, the fixture will dim to 30%.
- After another 10 minutes without motion, the fixture will turn off.
- During both the first and second delay periods, if the lux rises above 53 (50+5%), the fixture will turn off automatically, overriding other settings.

## 4.2.3 Groups

Groups enable control of a defined set of lights or sensors within a small area. There are a total of 16 groups in the list. The app provides a default group named "All Devices" on the Device page, allowing the user to control all lights in the zone. Groups let the user configure or change settings for all devices in a group simultaneously.

### 4.2.3.1 Add or Remove Fixture in a Group



All Page

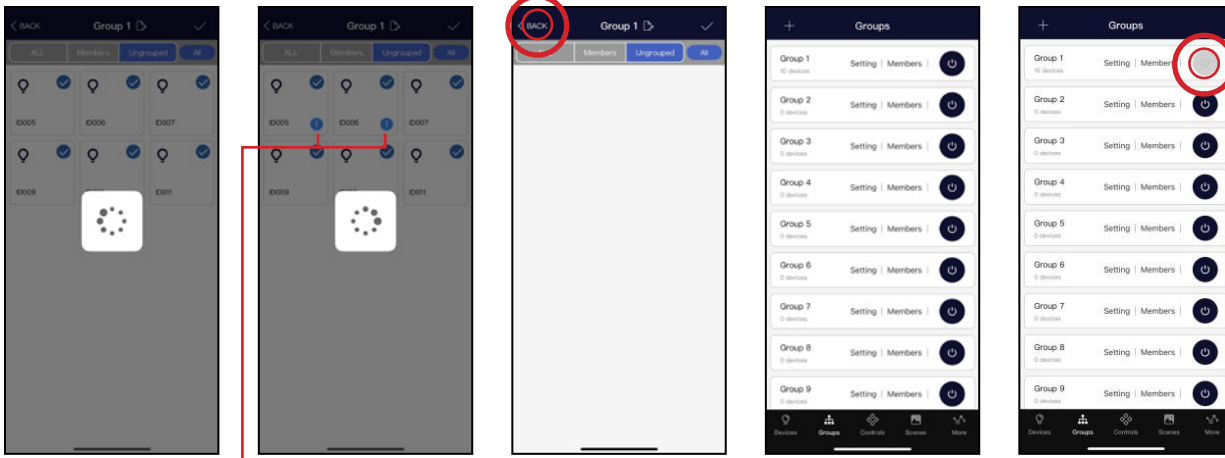
Members Page

Ungrouped Page

All Selected Page

On the Member Management page, click the selection box in the upper-right corner of the device icon to add or remove a device. After selecting members, click the "√" to save the group.

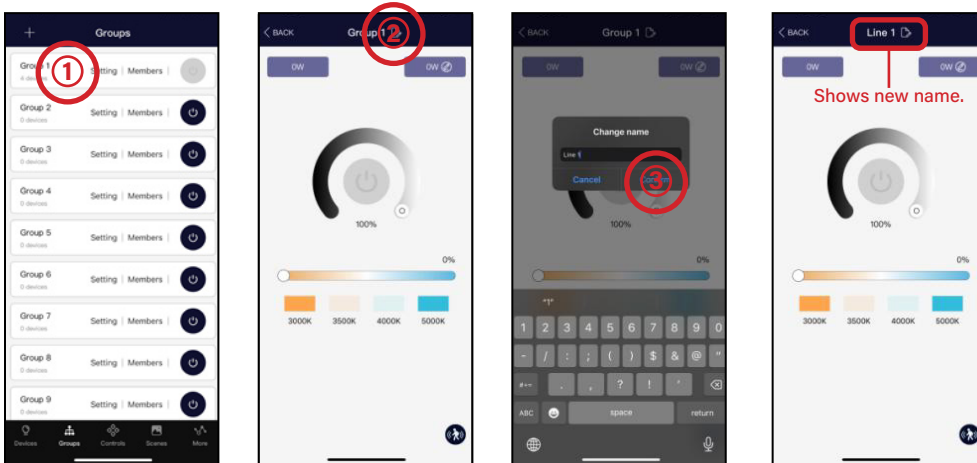
- **All:** All lights are shown
- **Members:** Devices added to this group
- **Ungrouped:** Devices not added to this group
- **All Selected Page:** Allows you to select all devices at once



On the "Group" interface of the app, tap the toggle switch of a group to quickly turn all devices in that group on or off.

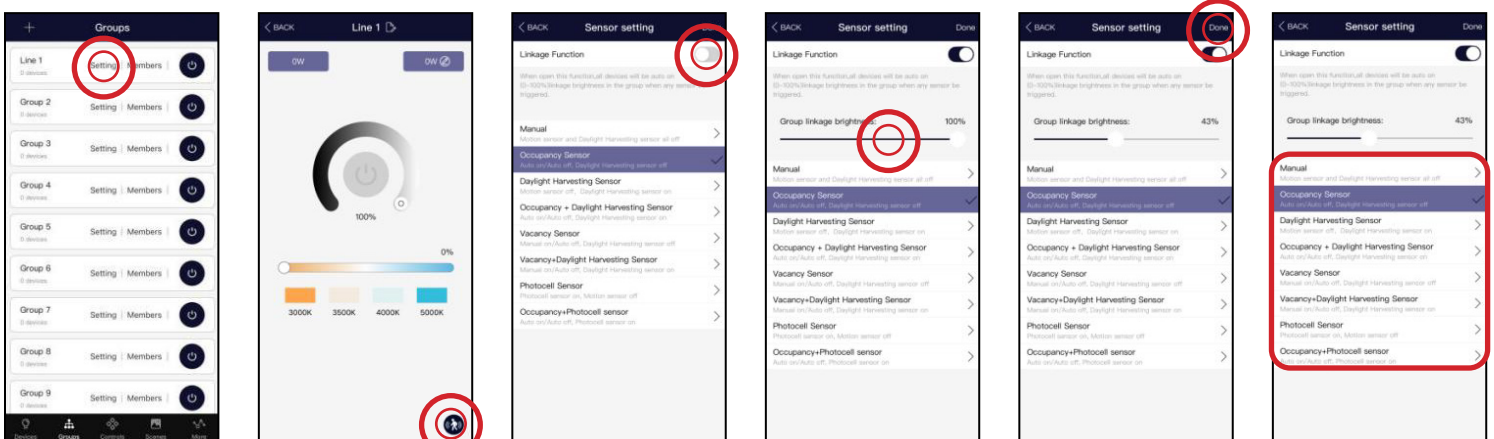
While adding, a "!" will appear in the lower-right corner of the device being configured. Once a device is successfully added to the group, the "!" will disappear. Then press "Back" to exit.

### 4.2.3.2 Rename the Group



1. Click "Group 1" to enter the group fixture dimming and management interface.
2. Click to name the group.
3. Enter the group name in the pop-up input box and click "Confirm" to save it.

### 4.2.3.2 Linkage and Parameter Settings



1. Click a group to enter the group setting page, then press on the bottom right to enter the parameter setting page.

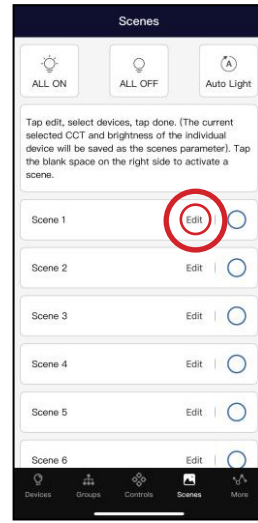
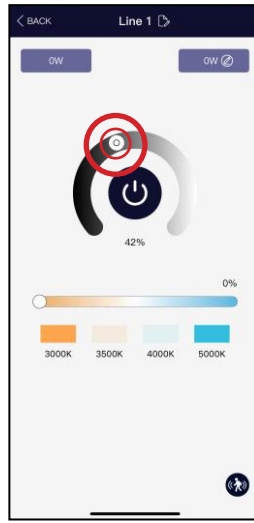
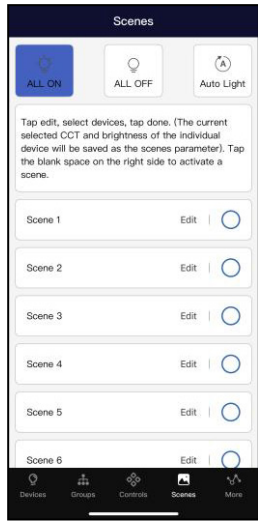
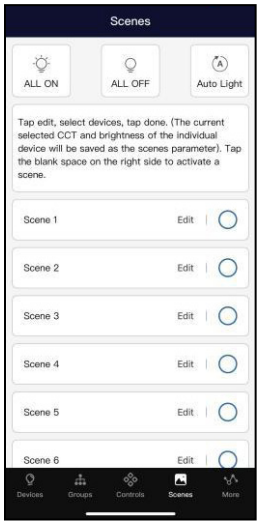
2. Toggle the "Linkage Function" switch to turn the linkage function of this fixture group on or off.

3. Set the **Group Linkage Brightness** in the sensor settings interface. Click "Done" to save the linkage settings.

For sensor parameter settings, please refer to pages 11-13.

## 4.2.4 Scenes

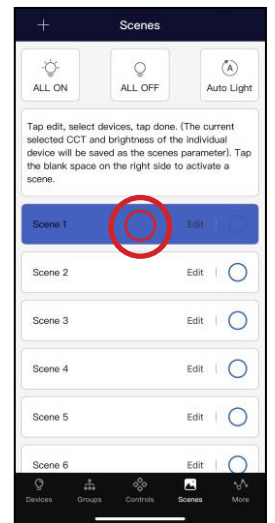
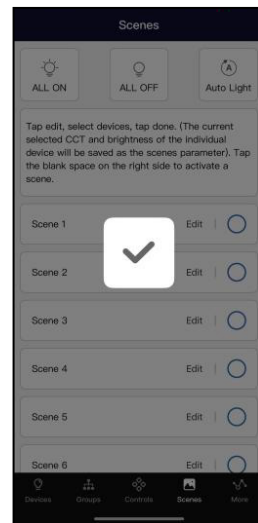
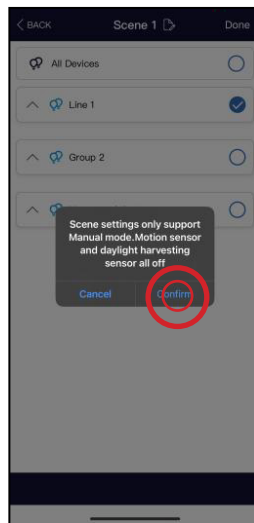
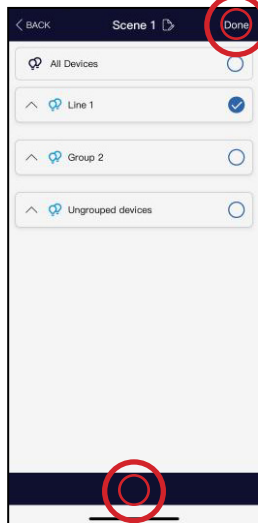
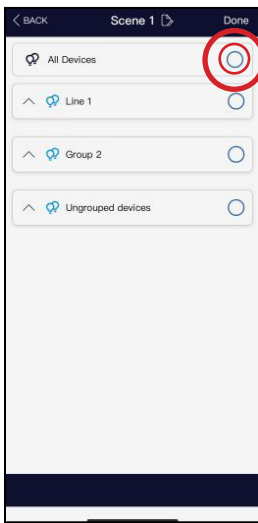
Scenes establish programmed settings for individual lights or groups of lights. Scenes can be set manually by users. There are a total of 16 groups available. Activating a scene causes all assigned devices to adopt the settings of the selected scene. Users must add lights first, then configure sensors, before creating groups and scenes.



The Scenes page includes three quick settings. You can turn all devices on or off by clicking "ALL ON" or "ALL OFF." For quick scenes, click "Auto Light," which puts the sensor into sensing mode. When selected, the button turns blue.

Based on actual application needs, set the required brightness or CCT for each device or group.

To create a scene:  
1. Click "Edit" on the Scene interface.



2. Select the devices or groups you have set, then click "Done."

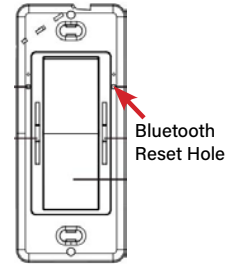
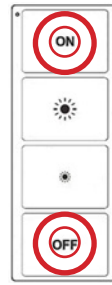
3. Click "Confirm" to save.

Tap any blank space to activate the scene.

## 4.2.5 Switch

PQL smart switches can be added to the app to control individual devices or groups.

### 4.2.5.1 Add a Switch



**Option 1**  
Press and hold the ON and OFF buttons for 5 seconds until the green indicator blinks.

**Option 2**  
Press and hold the ON/OFF and UP buttons until the red indicator blinks.

**Option 3**  
Insert a pin into the Bluetooth reset hole and hold for about 5 seconds until the red indicator blinks.

1. On the Device interface, click "+".

2. Click "Stop Searching."

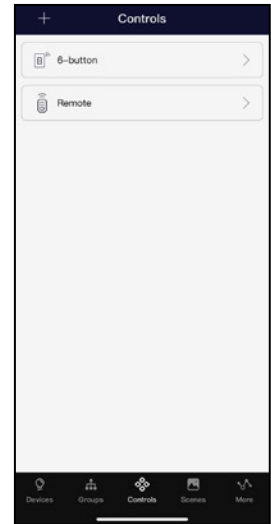
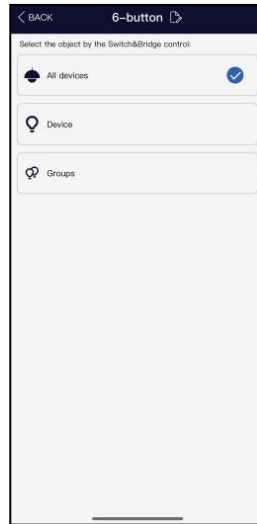
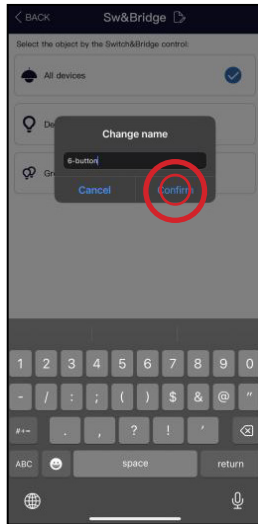
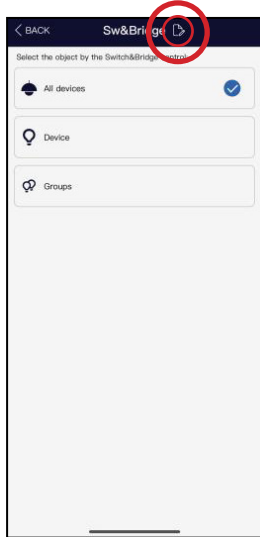
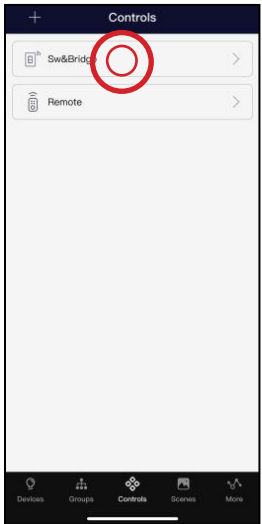
3. Click "Add."

4. Follow the instructions above to complete pairing.

#### Note:

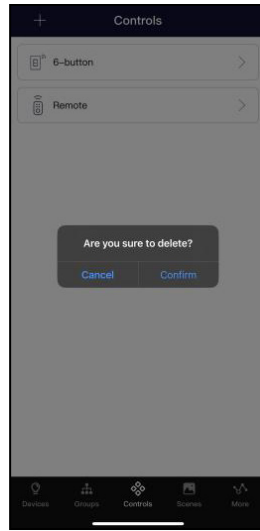
Set the switch to pairing mode, then click "+" in the app to add the switch to the zone.



### 4.2.5.2 Rename and Delete the Switch



1. Enter the switch parameter settings interface.

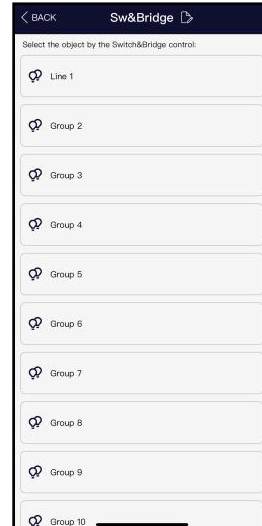
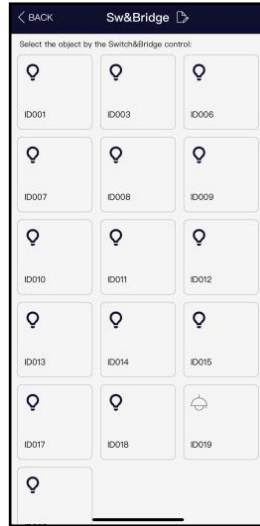
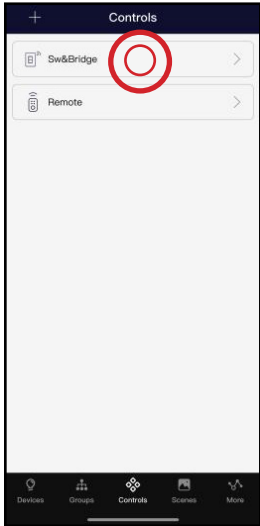
2. Click  to rename the switch, then click "Confirm" to save.



3. Long-press the switch until the  icon appears. Press 

4. Then press “**Confirm**” to delete.

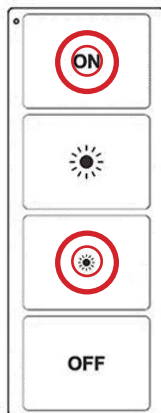
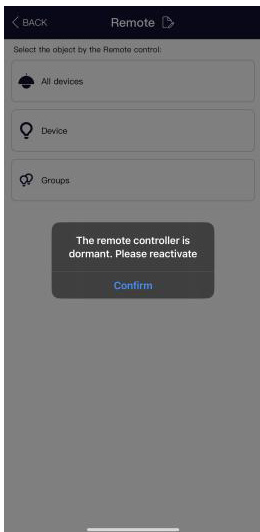
### 4.2.5.3 Associate Device or Groups to the Switches



**Note:**  
When assigning devices or groups to a switch, only one device or one group can be assigned at a time.

1. Enter the device interface.

2. On the switch configuration (fixtures interface), you can select All Fixtures, Single Fixture, or Group.



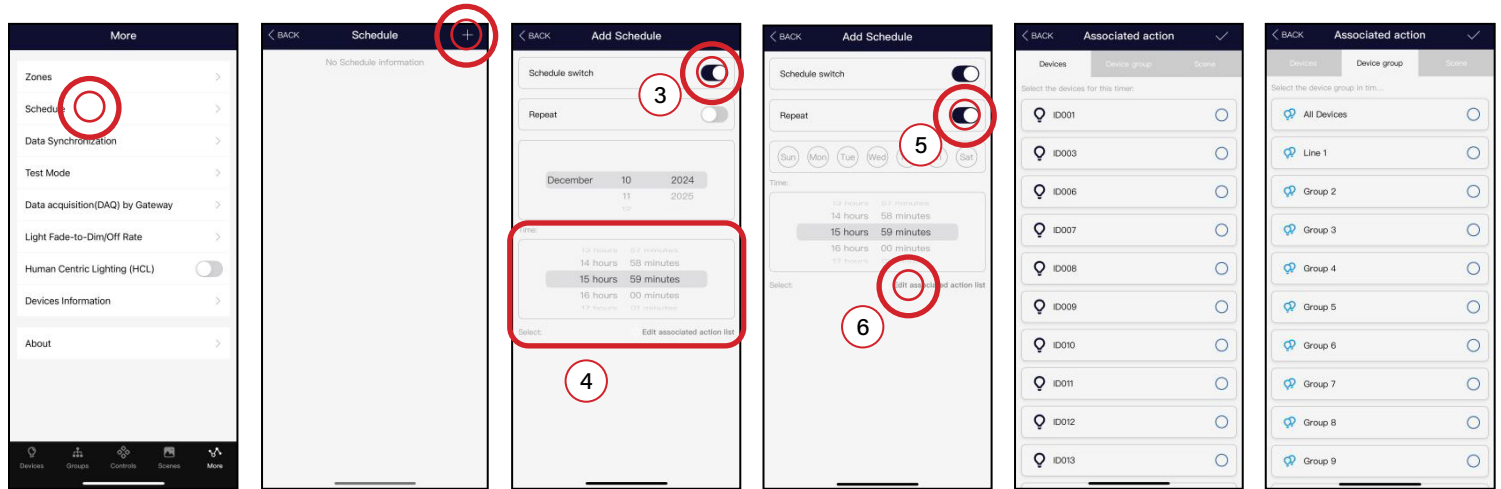
For Option 1, if the remote control is dormant, you must reactivate it to enter pairing mode. Press and hold the ON and DIM- buttons for 5 seconds until the green light flashes.

Option 2 and 3 can also be added as gateways. For more details, refer to pages 20–22.

## 4.2.6 Schedule (Timer)


Schedules allow users to program lighting changes for specific dates and times. A schedule can be applied to an individual device, a group, or a scene.

To create and set a schedule:



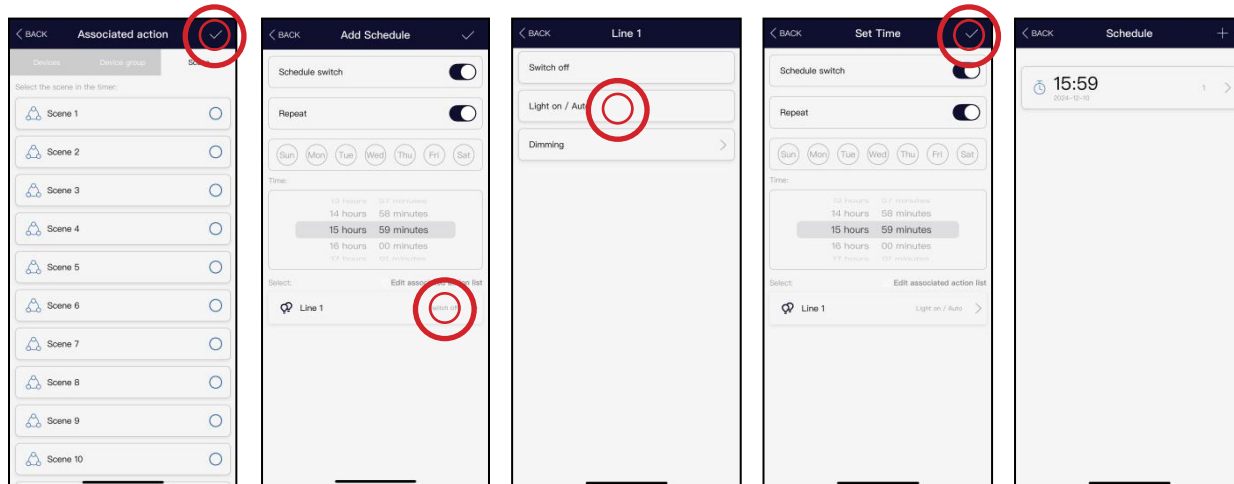
1. On the “More” interface, tap “Schedule.”

2. Tap “+” to add a schedule.

3. Toggle the  to enable or disable the timer.  
4. Set the time in the red area (4).

5. Choose whether the schedule repeats by date or time.  
6. Tap “Edit Associated Action List.”

7. Select a fixture, fixture group, or scene as needed.



8. After selecting, tap “✓” to save.

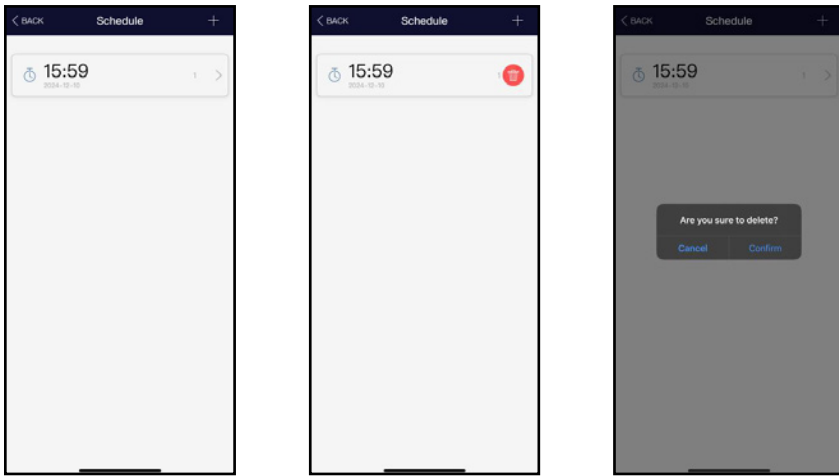
9. Tap the selected item to add an action. You can choose Switch Off, Light On/Auto, or Dimming.



10. Tap “✓” to save.

### Note:

When used with a gateway (Bridge GT-001-GE), if the power is suddenly cut off and restored after one day, the timer will still execute according to the set schedule.

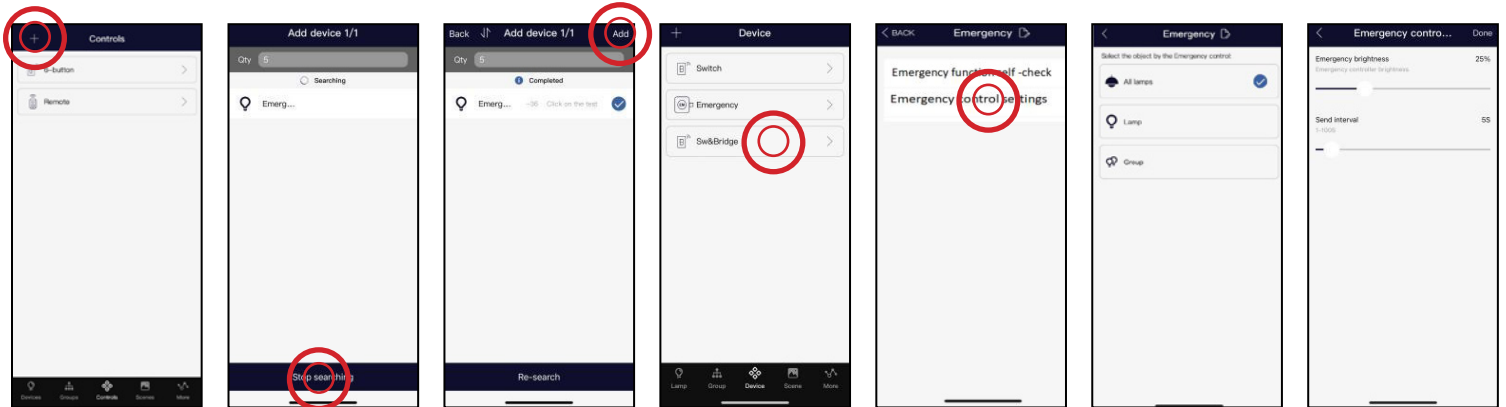
## To Delete the Schedule



1. Long-press the switch until the  icon appears. Press .
2. Then press "**Confirm**" to delete.

## 4.2.7 Devices for Emergency Kit

Emergency lighting control device must work together with an emergency power supply and supporting products.

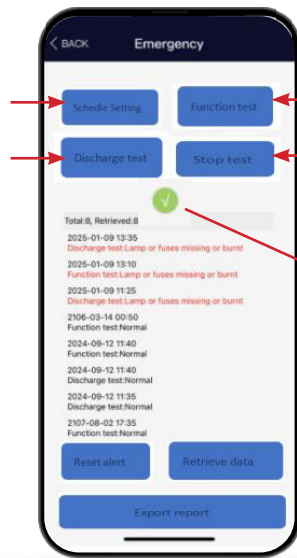


1. Click "+" on the Device interface.
2. Click "**Add**".
3. Click "**Stop**" to stop searching for devices.
4. Press the device icon to open the parameter configuration page.
5. Click Enter to access **Emergency Control Settings**.
6. Select the device: All Fixtures, a single fixture, or a group.
7. Choose the emergency brightness and the signal sending interval, then press "**Done**" to save.

## Emergency Function Self-Check

Press open Schedule Settings

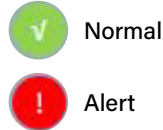
Press to start Discharge Test



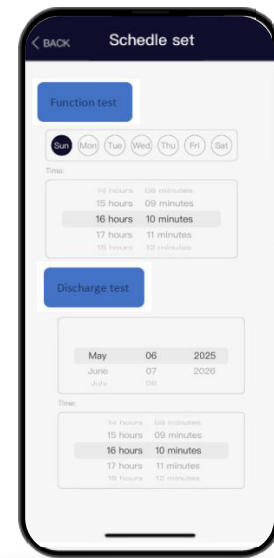
Press to start Function Test

Press to stop test

Current status shown in detail page.



## Schedule Setting



# 5 ENERGY MONITORING

## 5.1 General Description

The PQL lighting control system can provide energy monitoring reports, helping customers and clients analyze and optimize lighting energy consumption. Energy data is collected, and reports are generated through the PQL iOS app.

## 5.2 Devices for Energy Monitoring

An energy monitoring gateway is required to collect energy consumption data, generate energy reports, and automatically save them to the cloud. Key features include:

- Powered via USB-A receptacle.
- Embedded RTC for time synchronization across all devices in the zone, including a super capacitor to maintain time during power outages.
- Online energy consumption recording.

For detailed information, please refer to the gateway specifications. The gateway records raw energy consumption logs for every device in the zone and uploads them to the cloud at 5-minute intervals (configurable between 5–15 minutes). Data can be saved in daily, monthly, or yearly files and is never deleted, as it is stored securely in the cloud.

Typically, only one gateway is required per zone, though the exact number depends on the actual installation conditions.



Energy Monitoring USB Gateway Lite

## Other Gateways Available:

Outdoor IP65 Rated  
120-277V Powered



120-277V Powered



Put the magnets on the Bluetooth and Wifi Reset position.

### Bluetooth Reset:

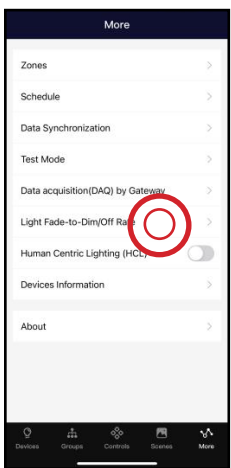
Press and hold "ON/OFF" and "△" for 5 seconds until the red indicator is blinking.

### WiFi Reset:

Press and hold "ON/OFF" and "AUTO" for 3-seconds until the red indicator is blinking.

## 5.2.1 Add Gateway

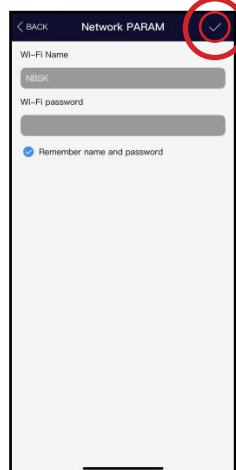
Step 1: Connect the gateway to the internet.



1. On the More interface, click "Gateway Acquisition (DAQ) by gateway."



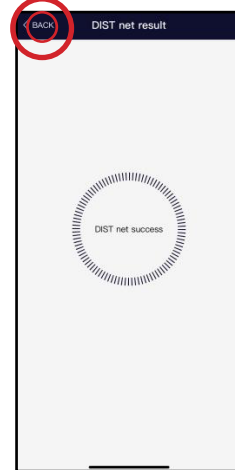
2. Click "+" to add a gateway.



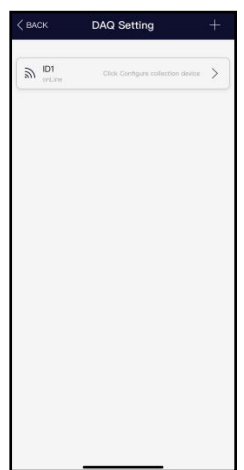
3. Connect to Wi-Fi, enter the password, and click "√" to save.



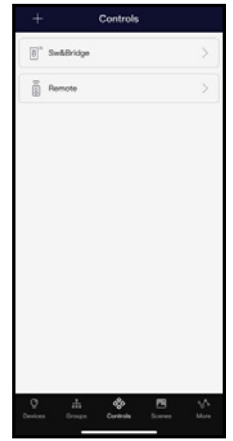
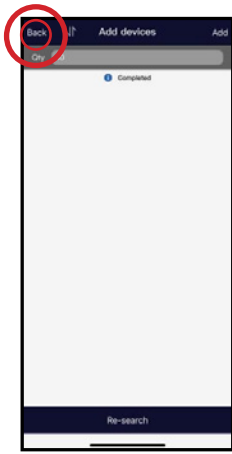
4. Long-press the S1 and S3 buttons until the green light turns on.



5. "DIST net success" means the gateway was added successfully. Click "x" to return to the gateway interface.



## Step 2: Add the gateway as a device.



1. Long-press the **S1** and **S2** buttons until the green light turns on.

2. On the Device interface, click "+".

3. Click **"Stop Searching"** on the Device interface.

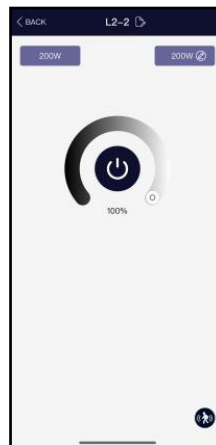
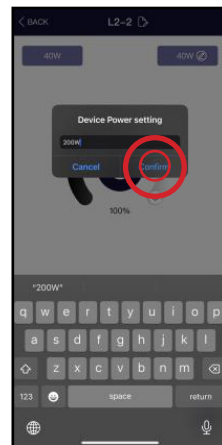
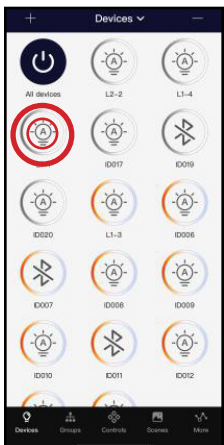
4. Click **"Add."**

5. Click **"Back"** to return to the controls page. The gateway will now be added successfully.


### Note:

- Step 2 is required.** Without an Internet connection, the gateway can still function as a net-bridge and time calibrator.
- Ensure the gateway is in pairing mode before adding it.

## 5.2.2 Set the Wattage of Fixtures

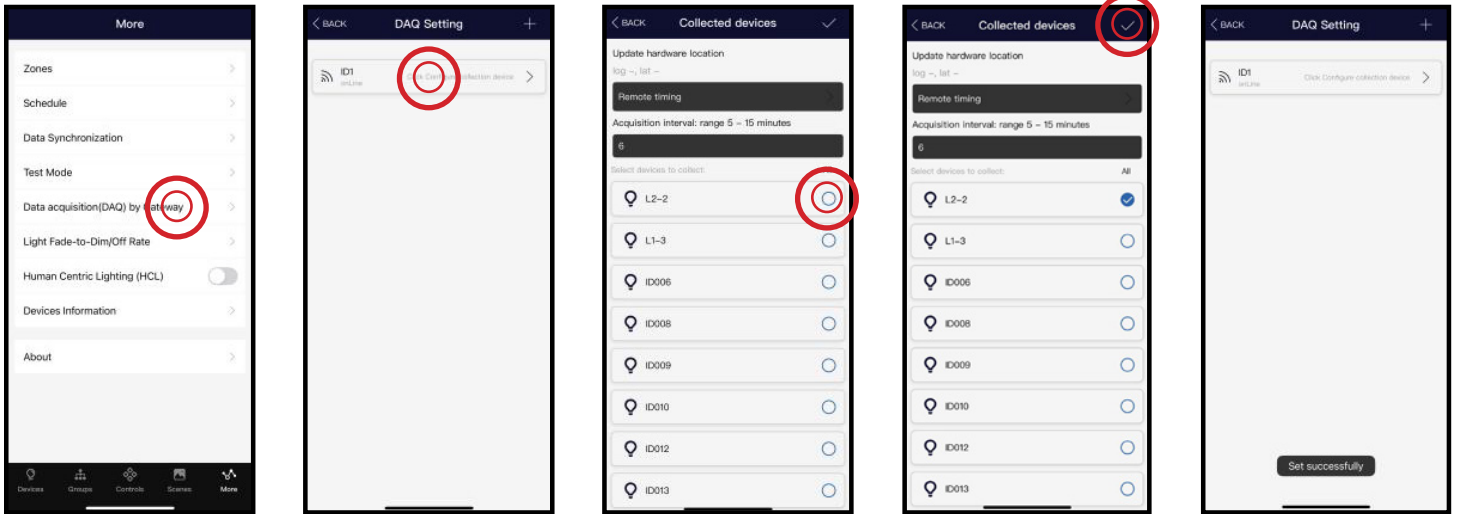


1. Long-press a fixture to enter the dimming and management interface.

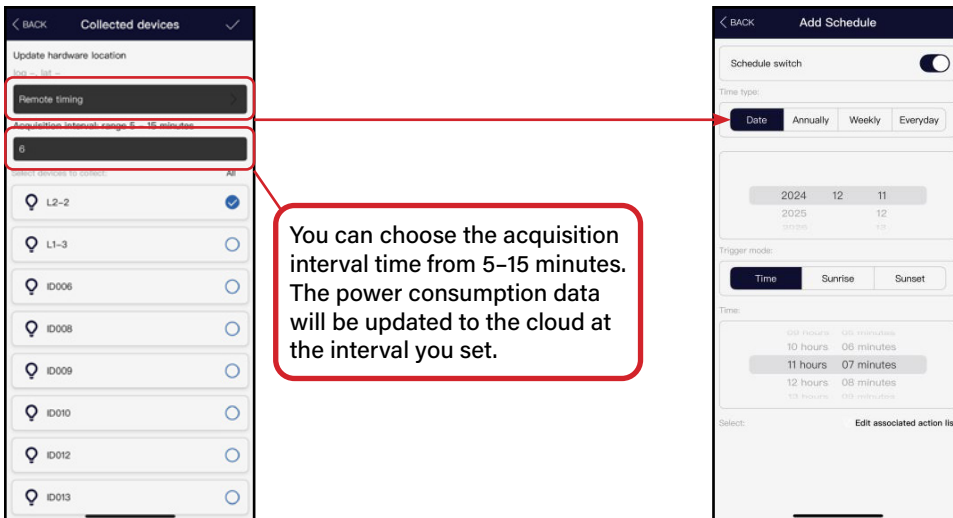
2. Click  to set the wattage.

3. Enter the actual wattage of the fixture and click **"OK"** to save.

## 5.2.3 Collect Fixtures



1. Click **"Gateway Acquisition (DAQ) by Gateway"** on the More page.
2. Click the gateway.
3. Select the fixtures for energy monitoring and click **"✓"** to save.



You can choose the acquisition interval time from 5-15 minutes. The power consumption data will be updated to the cloud at the interval you set.

You can also set a remote schedule. Here, you have more options—you can create a schedule annually or based on sunrise or sunset.

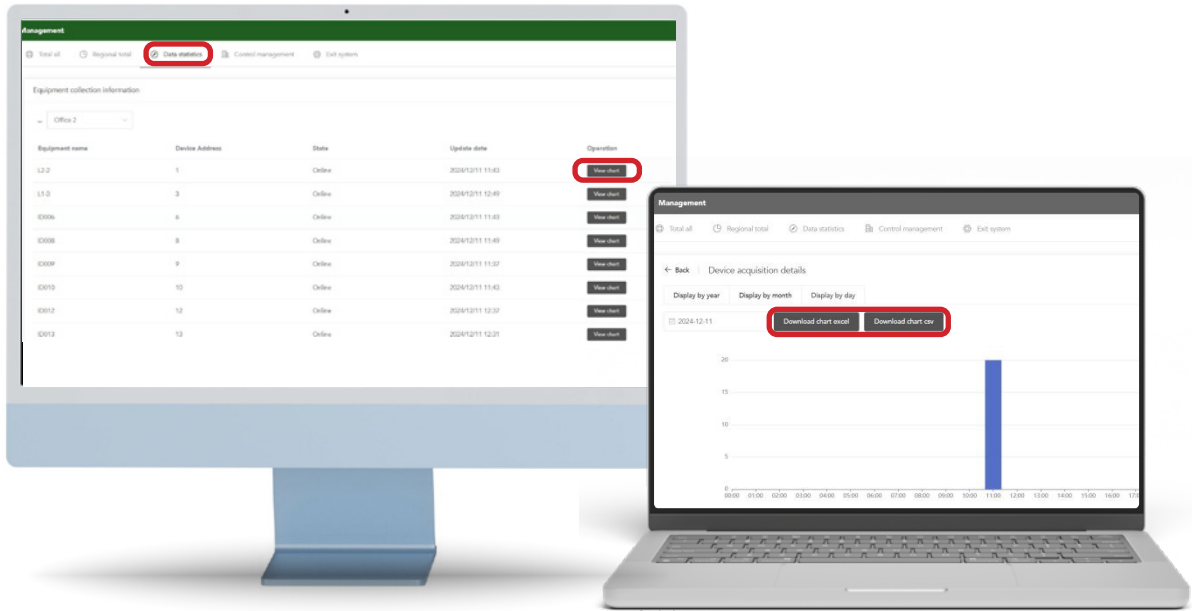
## 5.3 Get Data from the Website

Login to gateway account.

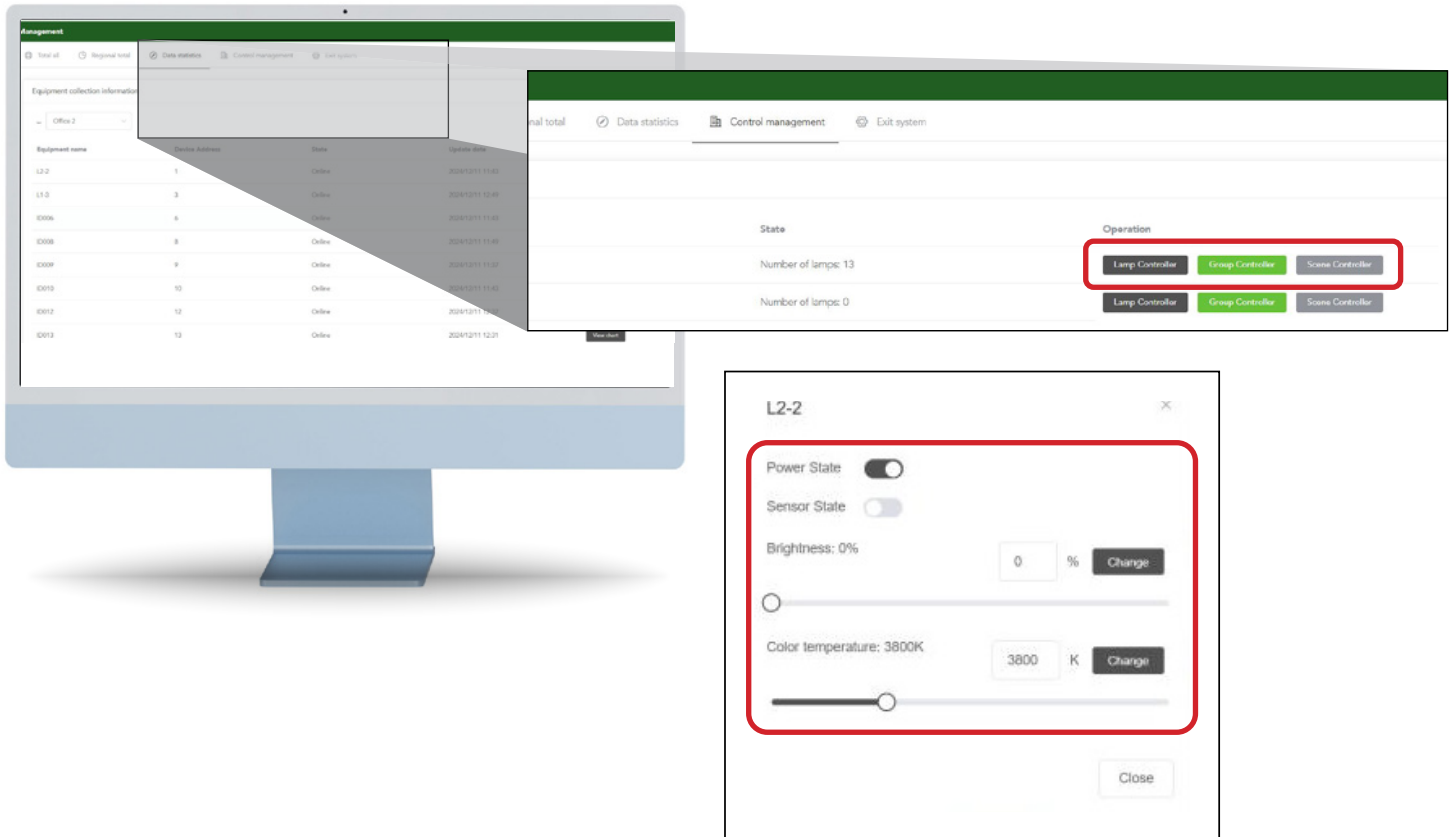
In Management, you can view total device energy consumption displayed by year, month, or day. You can also download the chart as an Excel or CSV file for reference.



You can also view each device in Data Statistics.



Additionally, you can perform simple ON/OFF, brightness, and CCT adjustments on the website for Groups, Scenes, or individual devices.



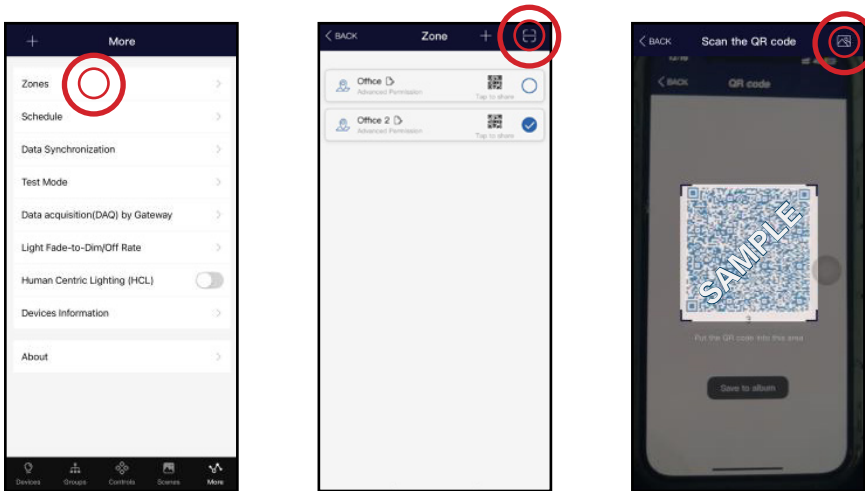
# 6 QR CODES


Whenever a zone is created, two QR codes can be generated: one for **Advanced Permission** (Admin level) and one for **Basic Permission** (User level). These QR codes represent the zone and all associated lights, switches, and groups.

The **Advanced Permission** QR code allows users to control and edit all settings within the app. Only users with Advanced Permission can share Advanced Permission QR codes.

The **Basic Permission** QR code allows users to dim lights, activate scenes, and control lighting within the zone, but it does not allow them to add, delete, or modify lights, groups, or scenes.


## 6.1 To Scan the Code



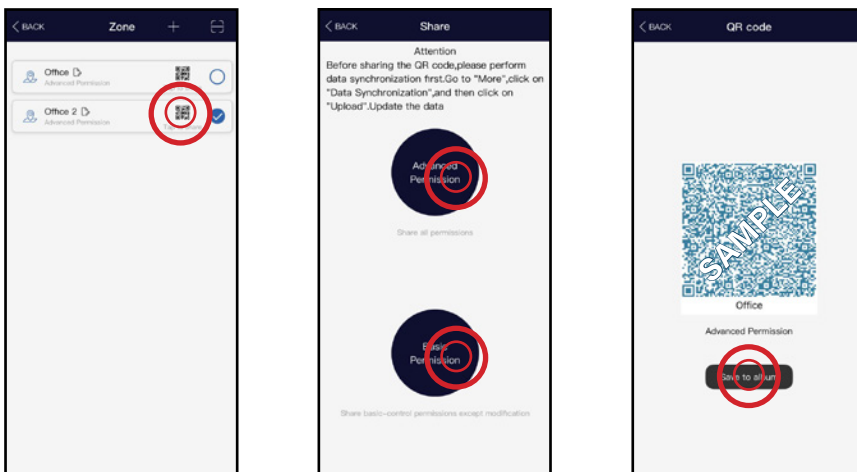
Click **"Zones"** in the **"More"** menu, then tap  to scan the QR code.

Center the camera frame over the QR code to scan it.

### Note:

You can also select QR codes saved on your phone by tapping the  button.

## 6.2 To Save the Code



All zones can be found in the **"Zones"** list. Tap a zone to share it.

By selecting the appropriate permissions based on the customer type, a QR code can be generated.

Tap **"Save to Album"** to store the code on your phone.

### Tip:

Each QR code represents a separately managed zone, including its fixtures, switches, and other devices. During preparation, it is recommended to generate QR codes for all zones and set groups, scenes, and names in advance to reduce on-site setup time.

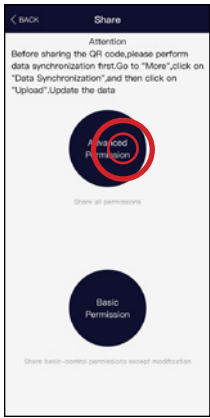


Basic Permission

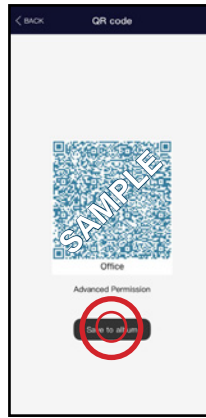


Advanced Permission

## 6.3 To Share the Code



1. From the Zones page, select the zone to share and click Advanced or Basic.

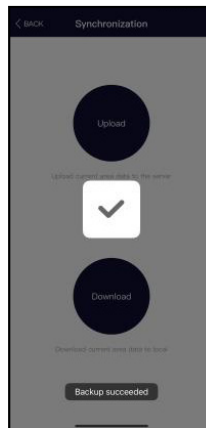
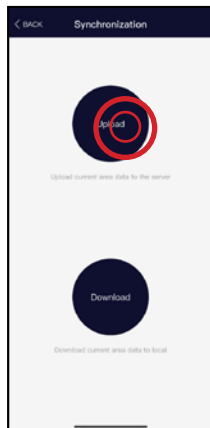
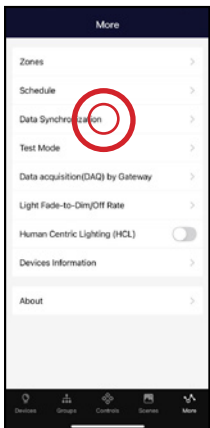


2. A QR code will be displayed in the app. It can be scanned by another user for sharing, or you can save the image or take a screenshot and send it to others for scanning.

## 6.4 To Synchronize Data to the Zones

### 6.4.1 Upload Data to Cloud

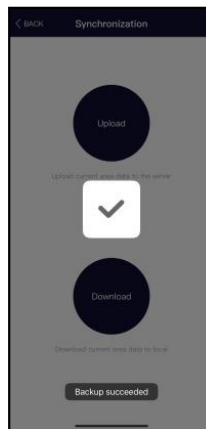
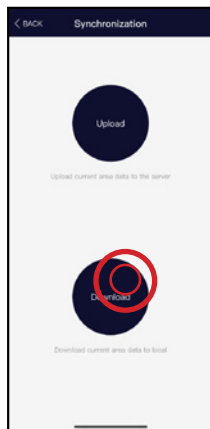
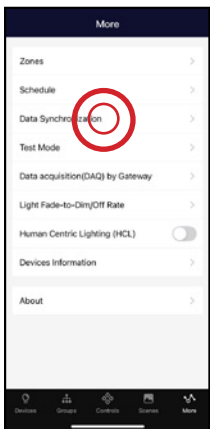
If someone (e.g., workers on site) changes the parameters, they need to upload the data so others can download it. Go to **More** → **Data Synchronization**, ensure an internet connection is available, then click **Upload**. Other users can then download the updated zone settings.



### 6.4.2 Download Data to Cloud

Go to **More** → **Data Synchronization**, ensure an internet connection is available, and click **Download** to synchronize the zone settings.

If the user does not have the zone, scan the QR code to add it first.



### 6.4.3 Remote Commissioning Without Gateway

If your customer doesn't know how to set the parameters and doesn't want to spend much time learning:

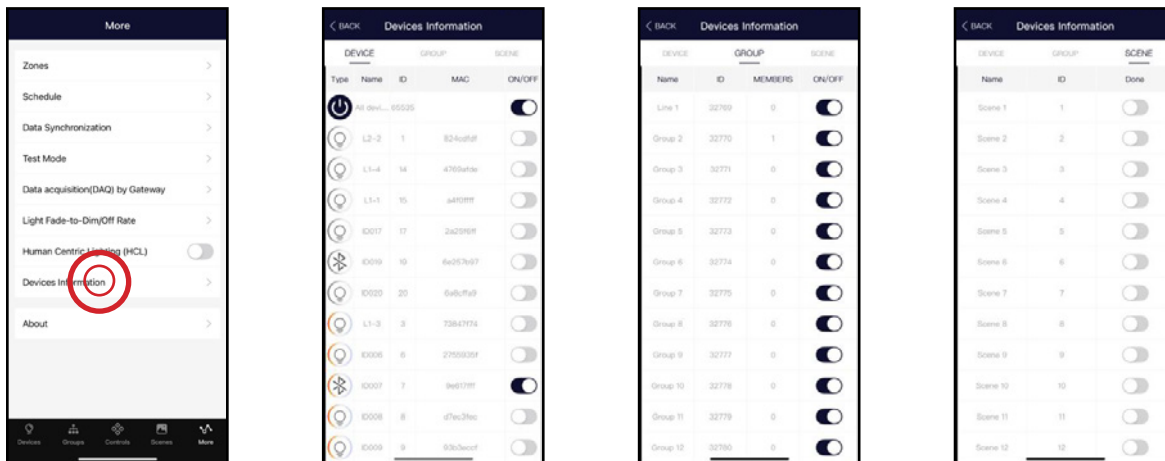
Step 1: For Customers	Step 2: For You	Step 3: For Customers
1. Create the Zone.	4. Scan the code.	7. Go to the site and download the data from the cloud via <b>"Data Synchronization."</b>
2. Share the Zone code.	5. Set the parameters of the groups according to the customer's needs.	8. Add the devices to the app.
3. Tell us which parameters you want to set for the sensors.	6. Upload the data to the cloud via <b>"Data Synchronization."</b>	9. Add the sensors to the groups accordingly.
		10. Make sure to upload the data to the cloud via <b>"Data Synchronization."</b>

# 7

## ADDITIONAL SETTINGS

### 7.1 Device Information

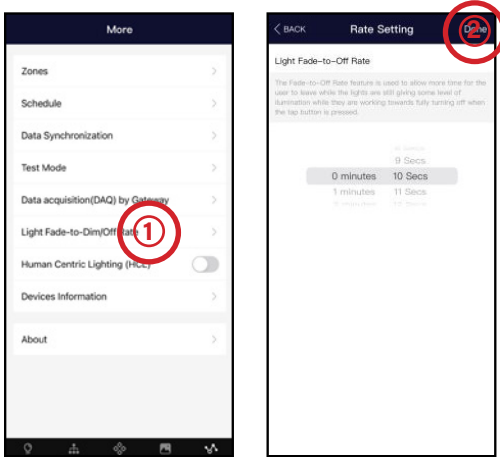
From the More page, the "Device Information" tab displays a list of all information for the devices, groups, and scenes in a zone. Here, you can also turn devices, groups, and scenes on or off.



1. From the More page, select **"Device Information."**
2. Switch between Lights, Groups, or Scenes to display the desired information. Here, you can also turn devices, groups, and scenes on or off.

## 7.2 Light Fade to Dim/Off Rate

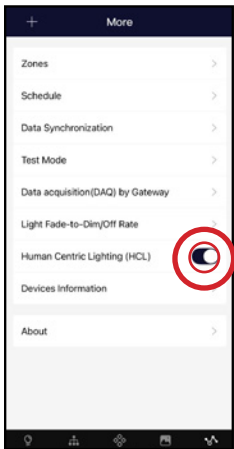
After setting the delay time, when you switch off the fixtures manually, the fixtures will turn off after the set delay. This is commonly used in offices with wall switches.



1. From the More page, select “**Light Fade to Dim/Off Rate.**”
2. Choose the desired delay time and click “**Done**” to save.

## 7.3 Human Centric Lighting (HCL)

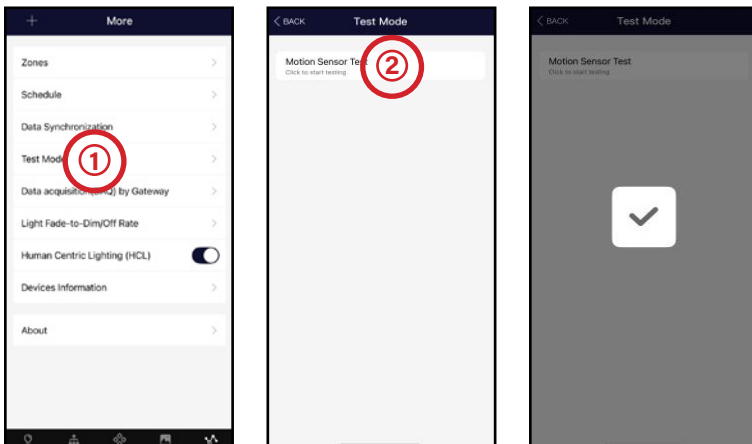
Human Centric Lighting (also called Circadian Rhythm) synchronizes the color temperature of all lights and adjusts them based on the time of day to mimic natural daylight. This function applies only to tunable white lights set in Auto mode.



1. From the More page, toggle the enable/disable button next to Human Centric Lighting (HCL).
2. Enabling HCL will automatically sync the color temperature across all tunable white lights in Auto mode.

## 7.4 Test Mode

In Test Mode, when the sensor detects motion, the fixture will turn on at 100%. After 2 seconds, the fixture will turn off. Test Mode exits automatically after 3 minutes.



1. Click “**Test Mode**” in the “**More**” interface.
2. Click to start.

# 8

## RESTORING FACTORY SETTINGS

There are five ways to restore the factory settings of the lights. Different methods apply to different devices.


### 8.1 Restore by Deleting Lights Online

This is the easiest method and is done through the app. After testing, lights must be deleted while they are online.

(After deleting the lights online, wait a moment to ensure all devices are successfully removed. Then refresh the "Fixture" interface to check whether any devices remain.)



1. Click “-” on the Devices interface.

2. Select  the device you want to delete and click “Confirm.”

3. This method only works for online fixtures.

### 8.2 Restore by RC-100



1. Press the “RESET” button.

2. Press the “ON/OFF” button.

The fixture will flash once, indicating a successful reset.

This method is useful if the fixtures were not deleted online.

### 8.3 Restore by Reset Button

Some sensors have a reset button. When the sensor is powered on, press and hold the reset button for about 5 seconds.

The fixture will flash once, indicating a successful reset.



SNB1PC12



SNB1PW40

### 8.4 Restore by Magnets

Most PQL products support magnet reset. A Reset label is attached to the product.

Place the magnet on top of the label for 5 seconds.



### 8.5 Restore by Power Reset (Not Recommended)

1. Turn on the fixture, then turn it off immediately.
2. Wait 8 seconds.
3. Repeat this process 7 times.
4. On the 8th power-on, the fixture will flash once.
5. You can then search for the device in the app. The flash indicates a successful reset.

# 9

## FACTORY DEFAULT SETTINGS

**Sensors:** Brightness: 100%, 1st Time Delay: 5 minutes, 2nd Time Delay: 10 minutes, Dimming Level: 30%, Motion Sensor Sensitivity: High, Daylight Harvesting: OFF, Group Linkage: OFF

**Fixture Controllers:** Always ON at 100%



# PQL

PREMIUM QUALITY LIGHTING®

M2 ARCHITECTURAL

