

# VEGA™ MUD-IN-FLANGE

## Recessed Ambient Linear LED

Client: \_\_\_\_\_ Order #: \_\_\_\_\_  
Project Name: \_\_\_\_\_ Type: \_\_\_\_\_ Qty: \_\_\_\_\_

### Performance Data

#### CRI

95 min with R9 of 69 or better

#### CCT

2700K, 3000K, 3500K, 4000K,  
5 Channel Color Tuning

#### Projected Lifetime

240,000 Hours (L80);  
110,000 Hours (L90)

#### Dimming

0-10V dimming standard

#### Operating Temperature

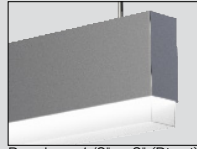
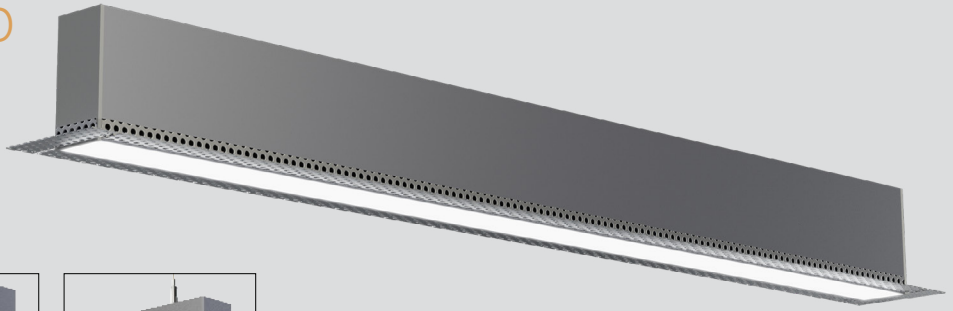
-30°C to +55°C (-22°F to +131°F)

#### Location

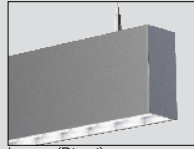
Approved for dry and damp  
locations

#### Warranty

5 year Standard  
10 year Optional



Drop Lens 1/2" or 2" (Direct)



Louver (Direct)

**10 Yr**

Warranty  
Available

**BAA**

Compliant  
Available

### Description

The Vega™ is a 2<sup>7</sup>/<sub>16</sub>" wide linear architectural luminaire delivering excellent illumination for offices, laboratories, libraries, and commercial spaces. Offered in standard lengths of 2', 3', 4', 6', and 8', and available in seamless runs of any length in 1-foot increments, the Mud-in-Flange variant of the Vega™ allows designers to provide a sleek, minimalist look for interior spaces. Blending seamlessly with walls and ceilings, the Mud in Flange removes all traces of the light fixture, save for the light itself.

### Features

- Up to 1200 lm/ft direct at 4000K
- Profile Dimensions: 2.95" wide x 4.6" high
- End Caps: Die cast aluminum with white powder coat finish
- Housing: Extruded Aluminum with white powder coat finish
- Direct Lens: Extruded Satin Acrylic
- Light Engine: Aluminum core LED board mounted to a white extruded chassis with integral driver and quick electrical disconnects for rapid tool-less servicing
- Weight: 30 pounds (8ft luminaire)

### Ordering Options **Contact sales representative to order.**

FIXTURE SERIES	CCT	FINISH	WARRANTY <sup>6</sup>
V2M Mud-in-Flange	27 2700K	W White	- 5 Year Warranty
LENGTH	30 3000K	OPTIONS	10 10 Year Warranty
2 2'	35 3500K	E Emergency Battery Backup	10L 10 Year Warranty including labor
3 3'	40 4000K	T Daylight Sensor <sup>4</sup>	
4 4'	5W 5 Channel Color Tuning <sup>2</sup>	M Motion Sensor <sup>4</sup>	
6 6'		V Daylight/Occupancy Sensor <sup>4</sup>	
8 8'		CONTROLS	
Sxxx System <sup>1</sup>	DIRECT LENS	LE LUTRON Ecosystem	
	- Frosted <sup>7</sup>	LV LUTRON VIVE	
OUTPUT	C 1/2" Drop Lens	PE PHILIPS Easysense	
L 7.5W/ft	D 2" Drop Lens	NL nLight	
M 10W/ft	L Louver	EO EnlightedONE System <sup>5</sup>	
H 15W/ft	VOLTAGE		
	U 120-277V		

<sup>1</sup> Replace "xxx" with desired system length, in feet. See Continuous Run Guide for additional information (separate document)

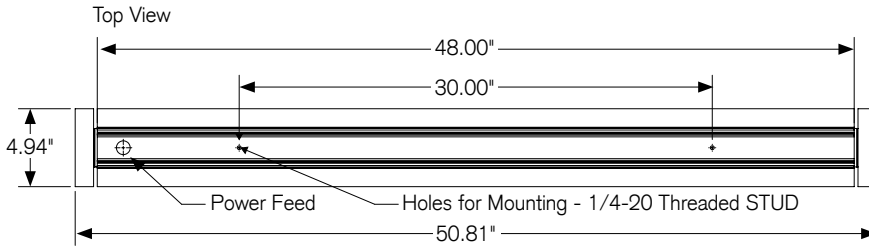
<sup>2</sup> Tunable CCT options only available at High Output setting. <sup>3</sup> Fixture standard

<sup>4</sup> Default sensor is the Enlighted One

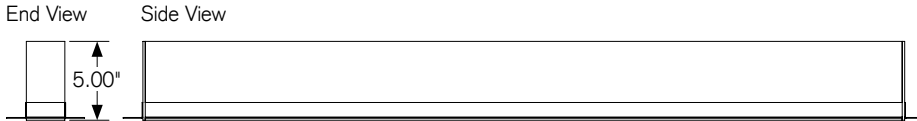
<sup>5</sup> 5 Year Warranty is Standard unless specified

**Dimensions**

4ft luminaire

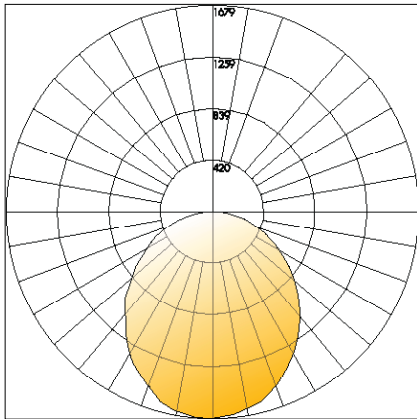


Fixture Length	Opening Width	Opening Length
2 ft	2.75"	24.875"
3 ft	2.75"	36.875"
4 ft	2.75"	48.875"
6 ft	2.75"	72.875"
8 ft	2.75"	96.875"



**Photometrics**

Polar Graph - 4' High Output 4000K



Delivered Lumens: 4640  
CRI: 97

**Direct (Down) Lumen Chart:**

OUTPUT SELECTION	LOW	MEDIUM	HIGH
NOMINAL WATTAGE	7.5W/ft	10W/ft	15W/ft
LUMENS PER FOOT	570	855	1160
<b>2' LENGTH</b>			
System Wattage	12.00	18.00	24.00
Lumen Output	1140	1700	2320
<b>3' LENGTH</b>			
System Wattage	18.00	27.00	36.00
Lumen Output	1710	2550	3480
<b>4' LENGTH</b>			
System Wattage	24.00	36.00	49.00
Lumen Output	2280	3400	4640
<b>6' LENGTH</b>			
System Wattage	36.00	54.00	72.00
Lumen Output	3420	5100	6960
<b>8' LENGTH</b>			
System Wattage	48.00	72.00	96.00
Lumen Output	4560	6800	9280

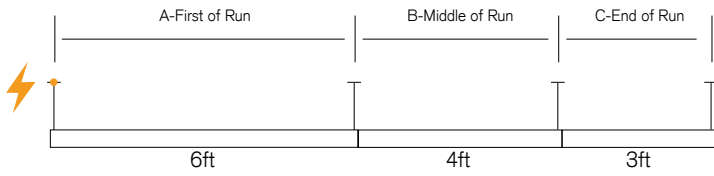
Lumen values shown are for 4000K models. For other color temperatures, use the below multipliers:

2700K: 0.85, 3000K: 0.90, 3500K: 0.95

For total system wattage consumption and lumen output, add the direct and indirect lumen and wattage data based on output settings desired.

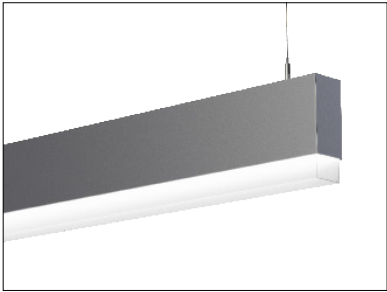
## Continuous Runs

When a system run is ordered, individual sections are shipped, labeled with their Section of Run noted at the end of the part number. Shown below is an example of a 13' continuous run. For more information, refer to the continuous run guide.

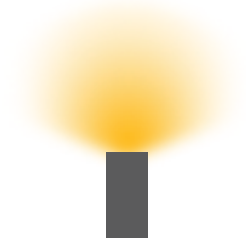


## Lens Accessories

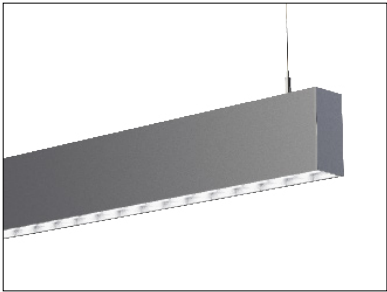
Drop Lens (Direct)  
Available in 1/2" and 2"



A white frosted PMMA lens that protrudes from the luminaire housing by 0.5" or 1.5". End caps are chemically welded to the lens.



Louver (Direct)



A Semi-specular parabolic louver. 22 GA. Aluminum Louver depth 3/4" louver spacing 2" Provides excellent glare control.

